

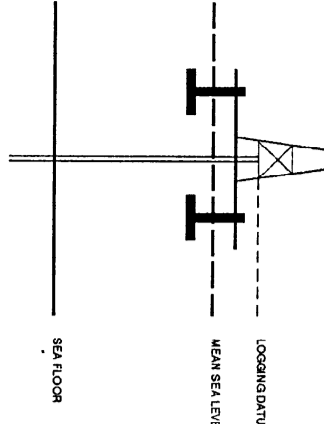
VERTICAL SEISMIC PROFILE



ZERO OFFSET VSP
 REVERSE POLARITY 20 CM/SEC
 VSP AND GEOGRAM COMPOSITE

PLOT 7

Company: BHP PETROLEUM PTY LTD
 Well: CONAN-1
 Field: WILDCAT
 Country: AUSTRALIA
 Reference No: SVJ561127/961198
 Date Logged: 2 AUG 1995
 Location: 086 527 14.997° S
 Orientation: NS, 25.30
 Permanent Datum: MSL
 Elevation Above Mean Sea Level: 0.00
 Logging Datum: 25.30
 Scheme Reference Datum: 0.00



SRD	SRD	SRD	SRD
1	208.96	122.81 N	143.1100000 M
1	108.96	50 M	143.1100000 M
1	108.96	50 M	143.1100000 M

All interpretations are opinions based on inferences from electrical or other measurements and we cannot, and do not guarantee the accuracy or correctness of any interpretations, and we shall not, except in the case of gross or willful negligence on our part, be liable or responsible for any loss, costs, damages or expenses incurred or sustained by anyone whose actions are based on interpretations made by any of our officers, agents or employees. These interpretations are also subject to Clause 4 of our General Terms and Conditions as set out in our current Price Schedule.

WAVESHAPING
 WAVESHAPING DECONVOLUTION
 ZERO PHASE (-7.75 HZ)
 ENHANCED UPDIPING WAVEFIELD
 VERTICAL SCALE : 20 CM/SEC
 POLARITY (SRD) : REVERSE

CORRIDOR STACK

CORRIDOR STACK + AGC
 300 MS AGC WINDOW

GEOGRAM 35 HZ
 ZERO PHASE - REVERSE POLARITY

GEOGRAM 25 HZ
 ZERO PHASE - REVERSE POLARITY

GEOGRAM 45 HZ
 ZERO PHASE - REVERSE POLARITY

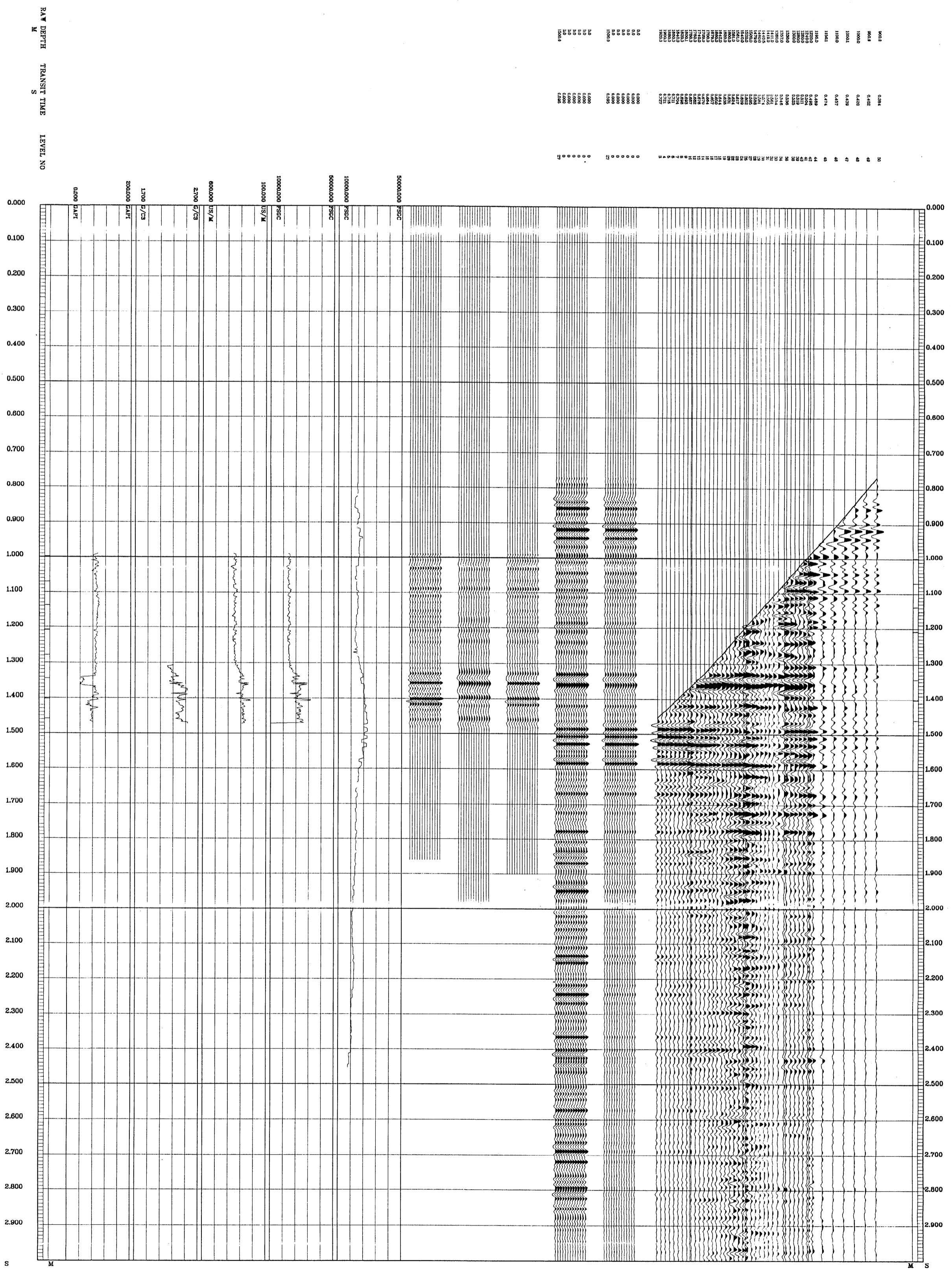
INVERTED IMPEDANCE

LOGGED IMPEDANCE

SONIC

DENSITY

GAMMA RAY



COMPANY BHP PETROLEUM PTY LTD
 FIELD WILDCAT
 WELL CONAN-1
 COUNTRY AUSTRALIA

