

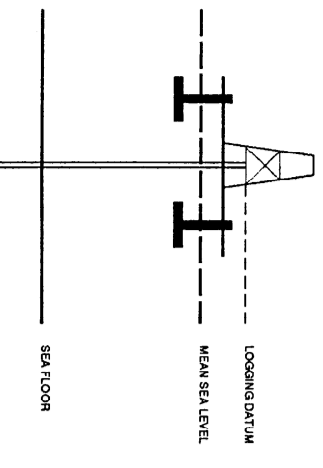
VERTICAL SEISMIC PROFILE

**ZERO OFFSET VSP
WAVESHAPING & CORRIDOR STACK**

PLOT 5

Company: BHP PETROLEUM PTY LTD
Well: CONAN-1
Field: WILDCAT
Country: AUSTRALIA
Reference No: SY-561131/561138
Date Logged: 2 AUG 1995
Location: 038 S2 14.095° S
Elevations: KB: 25.30 DF: 25.00 GL: -70.00
Permanent Datum: MSL
Date Processed: 7 AUG 1995
Reference No: 1955.00 to 650.00
Date Processed: 7 AUG 1995
Location: 142 48 52.022° E
Elevations: KB: 25.30 DF: 25.00 GL: -70.00
Permanent Datum: MSL
Depth Units: METRES
FIELD RECORDING: Engineer: RICHARDSON Location: Program Version: 706427
CONTRIBUTOR: Analyst: STORFORSHEIM Centre: SUJ Seismic: 20.5

Logging Datum: 25.30
Seismic Reference Datum: 0.00
ELEVATION ABOVE MEAN SEA LEVEL



Total Number of Levels: 55
Depth Reference: SB0

Time Reference	SB0
1	204.95
2	104.95
3	52.48
4	26.24
5	13.12
6	6.56
7	3.28
8	1.64
9	0.82
10	0.41
11	0.20
12	0.10
13	0.05
14	0.02
15	0.01
16	0.00
17	0.00
18	0.00
19	0.00
20	0.00
21	0.00
22	0.00
23	0.00
24	0.00
25	0.00
26	0.00
27	0.00
28	0.00
29	0.00
30	0.00
31	0.00
32	0.00
33	0.00
34	0.00
35	0.00
36	0.00
37	0.00
38	0.00
39	0.00
40	0.00
41	0.00
42	0.00
43	0.00
44	0.00
45	0.00
46	0.00
47	0.00
48	0.00
49	0.00
50	0.00
51	0.00
52	0.00
53	0.00
54	0.00
55	0.00

Remarks: FOLD HERE

The well name, location and borehole reference data were furnished by the customer.
All interpretations are opinions based on inferences from electrical or other measurements and we cannot, and do not guarantee the accuracy or correctness of any interpretations, and we shall not, except in the case of gross or willful negligence on our part, be liable or responsible for any loss, costs, damages or expenses incurred or sustained by anyone resulting from any interpretations made by any of our officers, agents or employees. These interpretations are also subject to Clause 4 of our General Terms and Conditions as set out in our current Price Schedule.

*** CORRIDOR STACK + AGC ***
AGC WINDOW : 300 MS
POLARITY (SE.C) : REVERSE

*** CORRIDOR STACK ***
CORRIDOR WINDOW : 150 MS
POLARITY (SE.C) : REVERSE

**** WAVESHAPING ****
WAVESHAPING - DECONVOLUTION
ZERO PHASE
ENHANCED UPDIPING WAVEFIELD
PROCESSING SEQUENCE:

MEAN STACK APPLIED
STATIC CORRECTION TO MSL: 6.56 MS
BAND PASS FILTER : 7-75 HZ
NORMALISATION GATE : 100 MS
TIME VARYING GAIN : (T/70)**+1.00
DOWNDIPING WAVEFIELD SUBTRACTION
WAVESHAPING DECONVOLUTION
ENHANCED UPDIPING WAVEFIELD
OPERATOR LENGTH : 100 S
PREWHITENING : 2 Z
5 LEVEL ENHANCED UPDIPING WAVEFIELD
VERTICAL SCALE : 10 CM/SEC
POLARITY (SE.C) : REVERSE

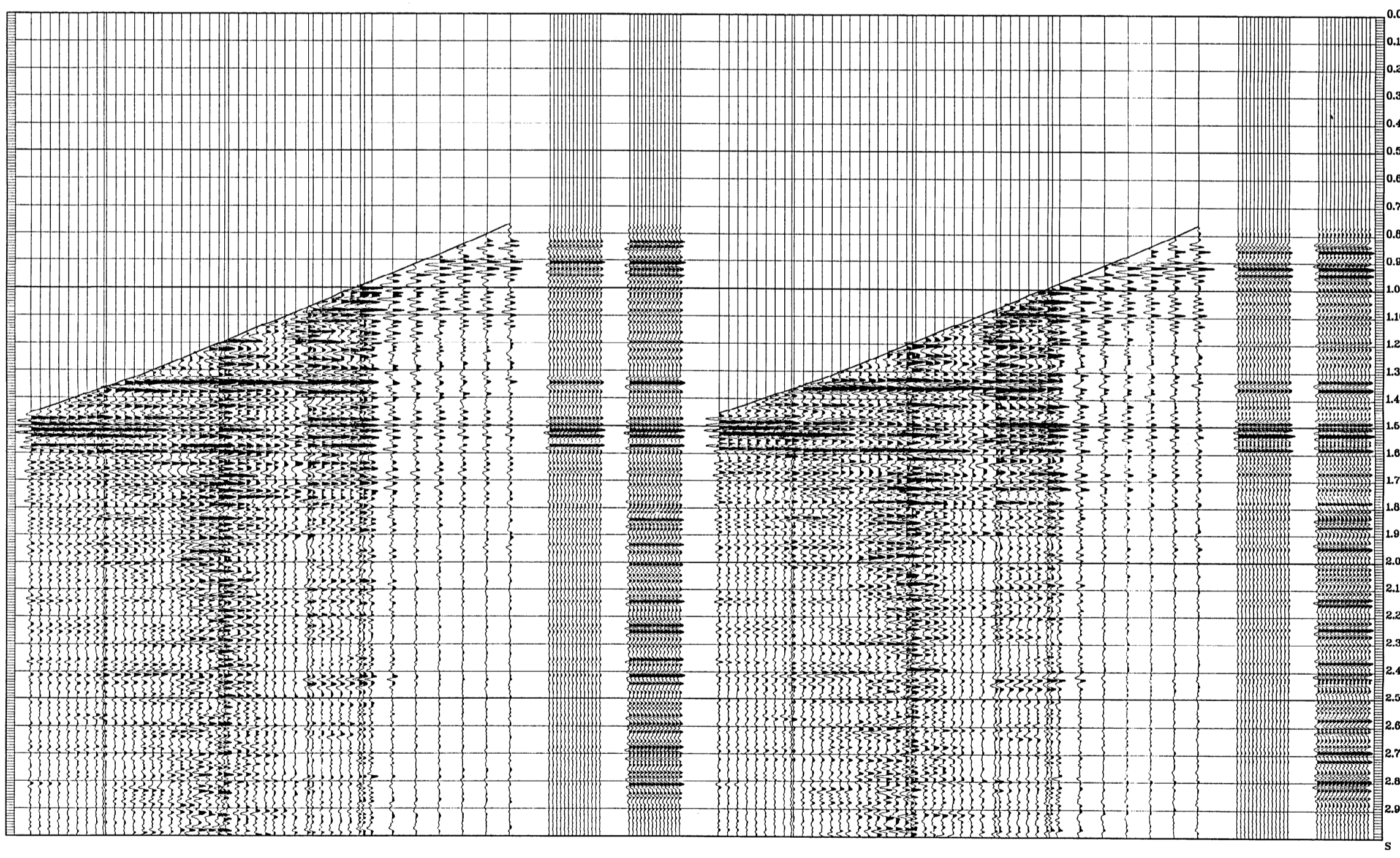
*** CORRIDOR STACK + AGC ***
AGC WINDOW : 300 MS
POLARITY (SE.C) : NORMAL

*** CORRIDOR STACK ***
CORRIDOR WINDOW : 150 MS
POLARITY (SE.C) : NORMAL

**** WAVESHAPING ****
WAVESHAPING - DECONVOLUTION
ZERO PHASE
ENHANCED UPDIPING WAVEFIELD
PROCESSING SEQUENCE:

MEAN STACK APPLIED
STATIC CORRECTION TO MSL: 6.56 MS
BAND PASS FILTER : 7-75 HZ
NORMALISATION GATE : 100 MS
TIME VARYING GAIN : (T/70)**+1.00
DOWNDIPING WAVEFIELD SUBTRACTION
WAVESHAPING DECONVOLUTION
ENHANCED UPDIPING WAVEFIELD
OPERATOR LENGTH : 100 S
PREWHITENING : 2 Z
5 LEVEL ENHANCED UPDIPING WAVEFIELD
VERTICAL SCALE : 10 CM/SEC
POLARITY (SE.C) : NORMAL

RAW DEPTH M	TRUE VERTICAL DEPTH MSL M	TRANSIT TIME S	LEVEL NO
0.00	0.00	0.000	1
0.00	0.00	0.000	2
0.00	0.00	0.000	3
0.00	0.00	0.000	4
0.00	0.00	0.000	5
0.00	0.00	0.000	6
0.00	0.00	0.000	7
0.00	0.00	0.000	8
0.00	0.00	0.000	9
0.00	0.00	0.000	10
0.00	0.00	0.000	11
0.00	0.00	0.000	12
0.00	0.00	0.000	13
0.00	0.00	0.000	14
0.00	0.00	0.000	15
0.00	0.00	0.000	16
0.00	0.00	0.000	17
0.00	0.00	0.000	18
0.00	0.00	0.000	19
0.00	0.00	0.000	20
0.00	0.00	0.000	21
0.00	0.00	0.000	22
0.00	0.00	0.000	23
0.00	0.00	0.000	24
0.00	0.00	0.000	25
0.00	0.00	0.000	26
0.00	0.00	0.000	27
0.00	0.00	0.000	28
0.00	0.00	0.000	29
0.00	0.00	0.000	30
0.00	0.00	0.000	31
0.00	0.00	0.000	32
0.00	0.00	0.000	33
0.00	0.00	0.000	34
0.00	0.00	0.000	35
0.00	0.00	0.000	36
0.00	0.00	0.000	37
0.00	0.00	0.000	38
0.00	0.00	0.000	39
0.00	0.00	0.000	40
0.00	0.00	0.000	41
0.00	0.00	0.000	42
0.00	0.00	0.000	43
0.00	0.00	0.000	44
0.00	0.00	0.000	45
0.00	0.00	0.000	46
0.00	0.00	0.000	47
0.00	0.00	0.000	48
0.00	0.00	0.000	49
0.00	0.00	0.000	50
0.00	0.00	0.000	51
0.00	0.00	0.000	52
0.00	0.00	0.000	53
0.00	0.00	0.000	54
0.00	0.00	0.000	55



COMPANY BHP PETROLEUM PTY LTD
FIELD WILDCAT
WELL CONAN-1
COUNTRY AUSTRALIA

