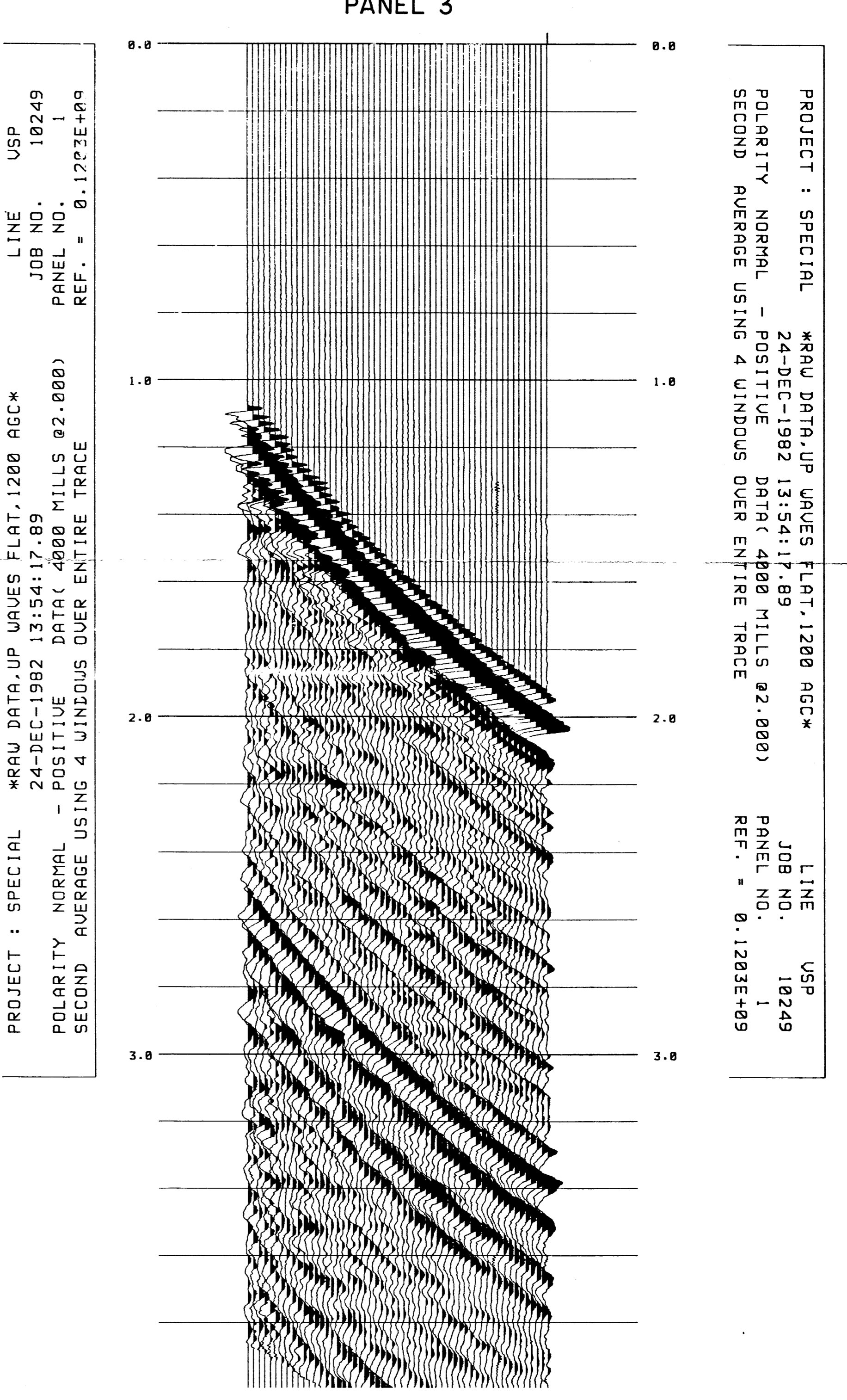
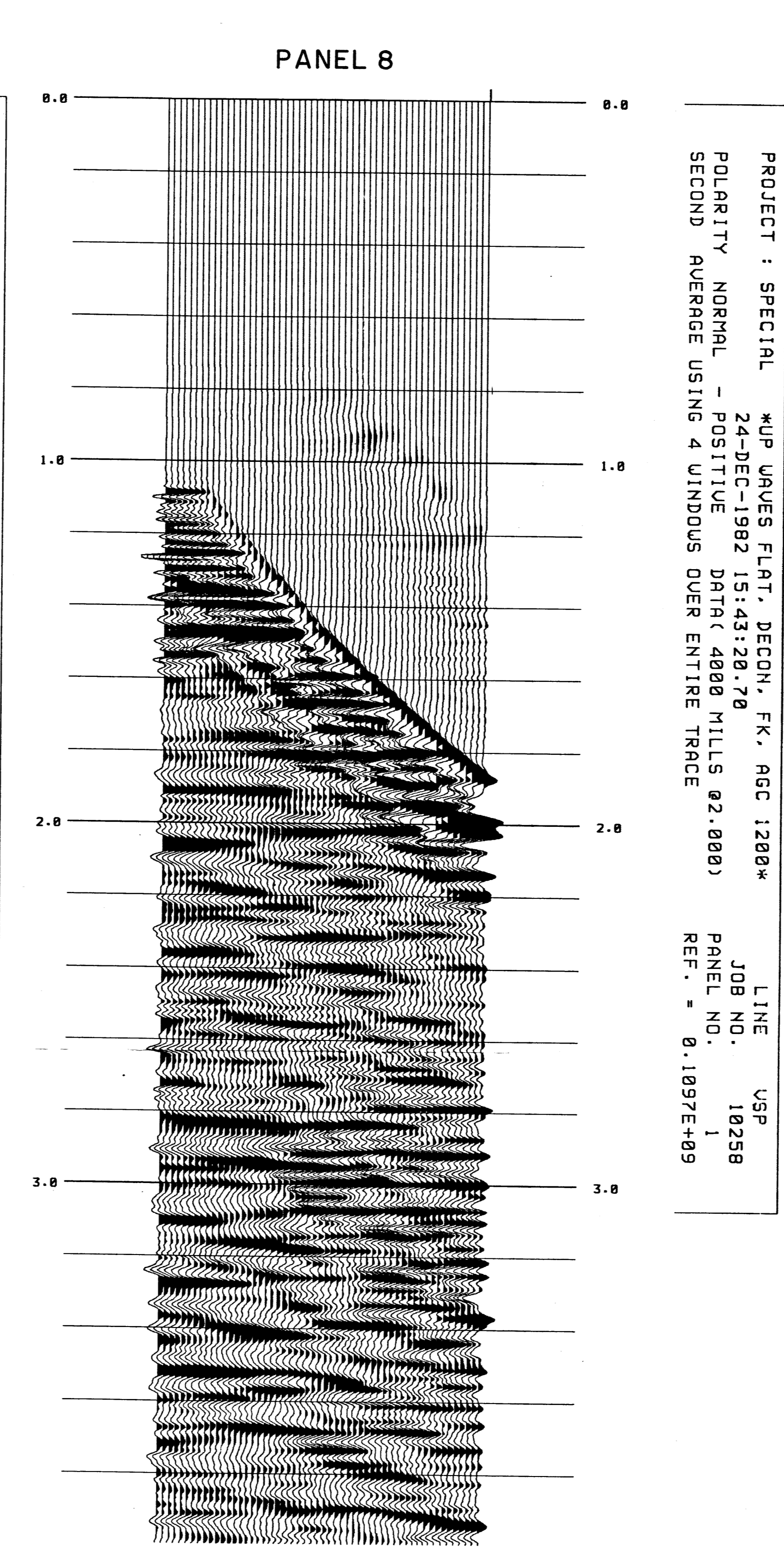


PROJECT : SPECIAL *UP WAVES FLAT, DECON, AGC 1200*
 POLARITY NORMAL - POSITIVE DATA(4800 MILLS @2.000)
 SECOND AVERAGE USING 4 WINDOWS OVER ENTIRE TRACE
 LINE USP
 JOB NO. 18238
 PANEL NO. 1
 REF. * 0.1157E+09

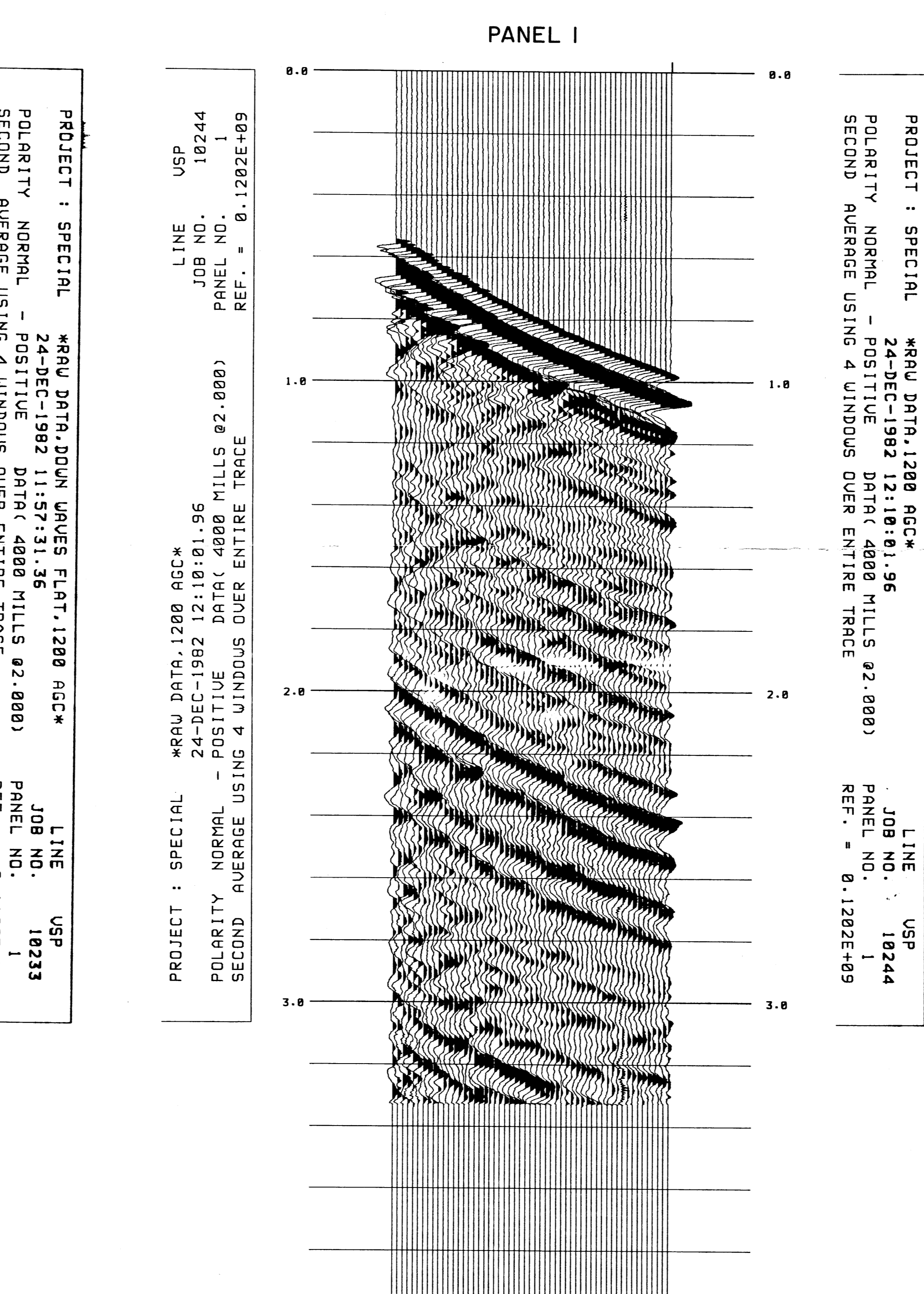


PROJECT : SPECIAL *RAW DATA, UP WAVES FLAT, 1200 AGC*
 POLARITY NORMAL - POSITIVE DATA(4800 MILLS @2.000)
 SECOND AVERAGE USING 4 WINDOWS OVER ENTIRE TRACE
 LINE USP
 JOB NO. 18249
 PANEL NO. 1
 REF. * 0.1203E+09

PROJECT : SPECIAL *UP WAVES FLAT, DECON, AGC 1200*
 POLARITY NORMAL - POSITIVE DATA(4800 MILLS @2.000)
 SECOND AVERAGE USING 4 WINDOWS OVER ENTIRE TRACE
 LINE USP
 JOB NO. 18238
 PANEL NO. 1
 REF. * 0.1157E+09

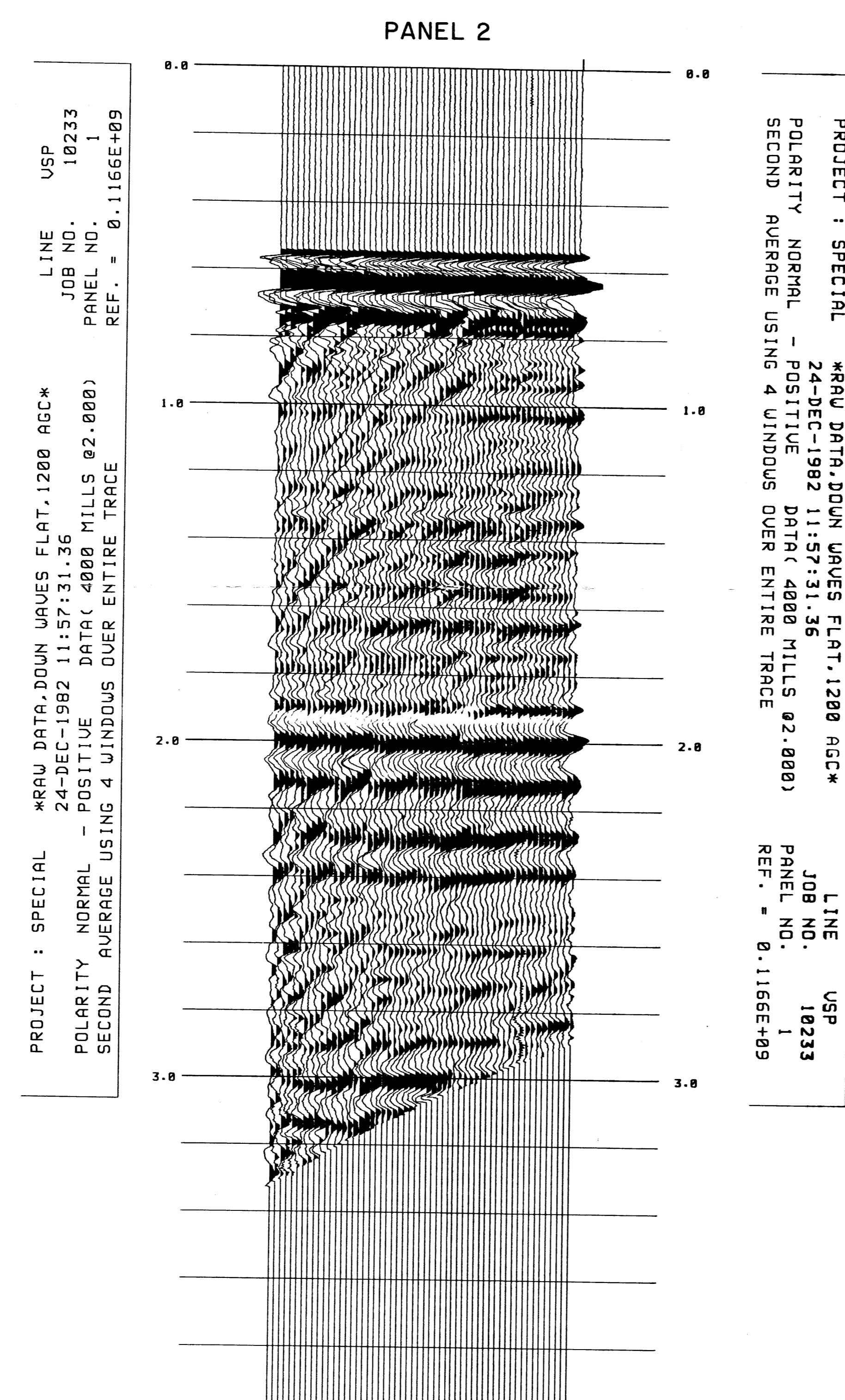


PROJECT : SPECIAL *UP WAVES FLAT, DECON, FK, AGC 1200*
 POLARITY NORMAL - POSITIVE DATA(4800 MILLS @2.000)
 SECOND AVERAGE USING 4 WINDOWS OVER ENTIRE TRACE
 LINE USP
 JOB NO. 18238
 PANEL NO. 1
 REF. * 0.1097E+09



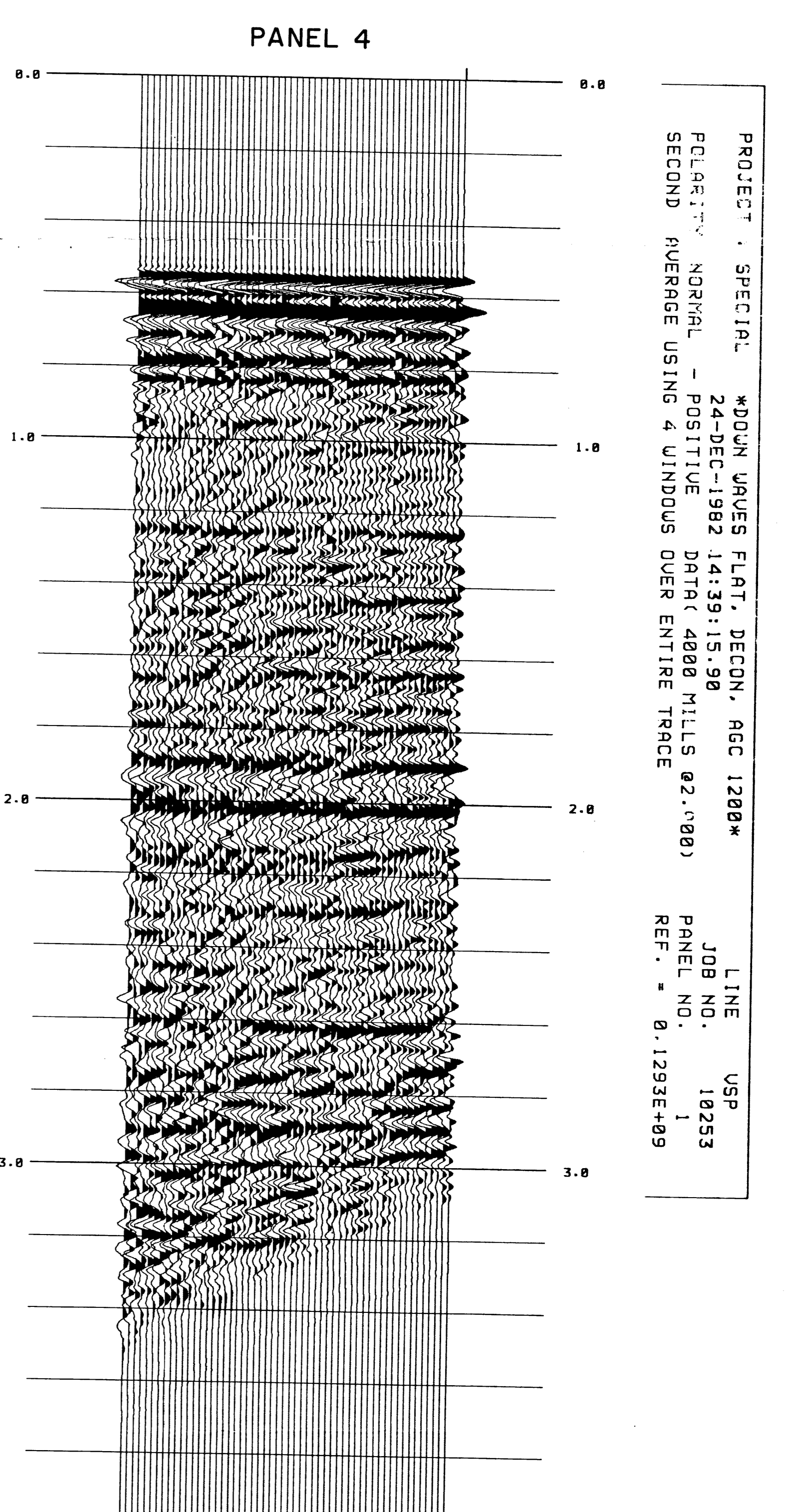
PROJECT : SPECIAL *RAW DATA, DOWN WAVES FLAT, 1200 AGC*
 POLARITY NORMAL - POSITIVE DATA(4800 MILLS @2.000)
 SECOND AVERAGE USING 4 WINDOWS OVER ENTIRE TRACE
 LINE USP
 JOB NO. 18244
 PANEL NO. 1
 REF. * 0.1202E+09

PROJECT : SPECIAL *UP WAVES FLAT, DECON, FK, AGC 1200*
 POLARITY NORMAL - POSITIVE DATA(4800 MILLS @2.000)
 SECOND AVERAGE USING 4 WINDOWS OVER ENTIRE TRACE
 LINE USP
 JOB NO. 18238
 PANEL NO. 1
 REF. * 0.1097E+09



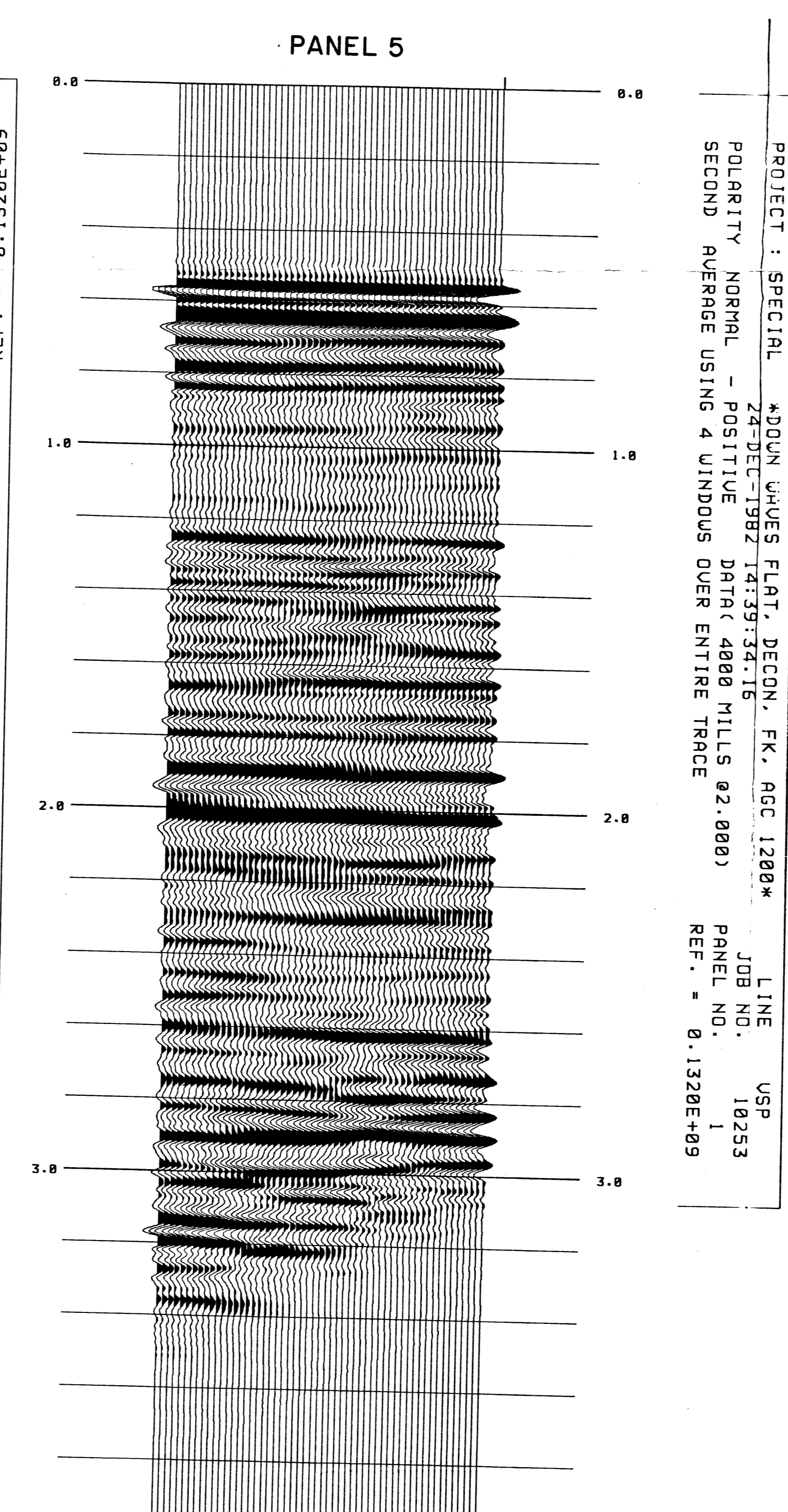
PROJECT : SPECIAL *RAW DATA, DOWN WAVES FLAT, 1200 AGC*
 POLARITY NORMAL - POSITIVE DATA(4800 MILLS @2.000)
 SECOND AVERAGE USING 4 WINDOWS OVER ENTIRE TRACE
 LINE USP
 JOB NO. 18233
 PANEL NO. 1
 REF. * 0.1166E+09

PROJECT : SPECIAL *UP WAVES FLAT, DECON, FK, COHERE, AGC 1
 POLARITY NORMAL - POSITIVE DATA(4800 MILLS @2.000)
 SECOND AVERAGE USING 4 WINDOWS OVER ENTIRE TRACE
 LINE USP
 JOB NO. 18258
 PANEL NO. 1
 REF. * 0.0848E+08



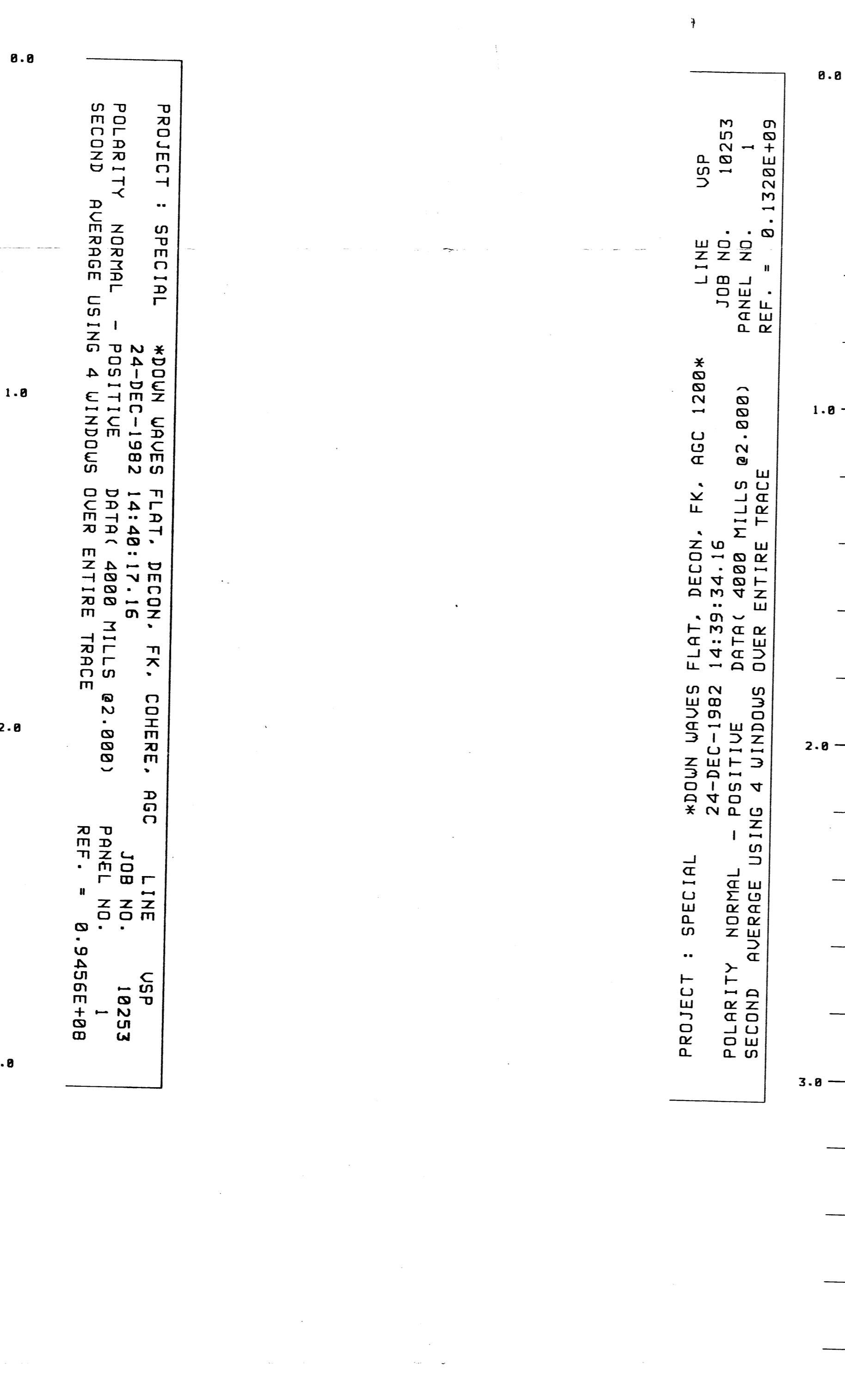
PROJECT : SPECIAL *DOWN WAVES FLAT, DECON, AGC 1200*
 POLARITY NORMAL - POSITIVE DATA(4800 MILLS @2.000)
 SECOND AVERAGE USING 4 WINDOWS OVER ENTIRE TRACE
 LINE USP
 JOB NO. 18253
 PANEL NO. 1
 REF. * 0.1292E+09

PROJECT : SPECIAL *DOWN WAVES FLAT, DECON, AGC 1200*
 POLARITY NORMAL - POSITIVE DATA(4800 MILLS @2.000)
 SECOND AVERAGE USING 4 WINDOWS OVER ENTIRE TRACE
 LINE USP
 JOB NO. 18253
 PANEL NO. 1
 REF. * 0.1292E+09



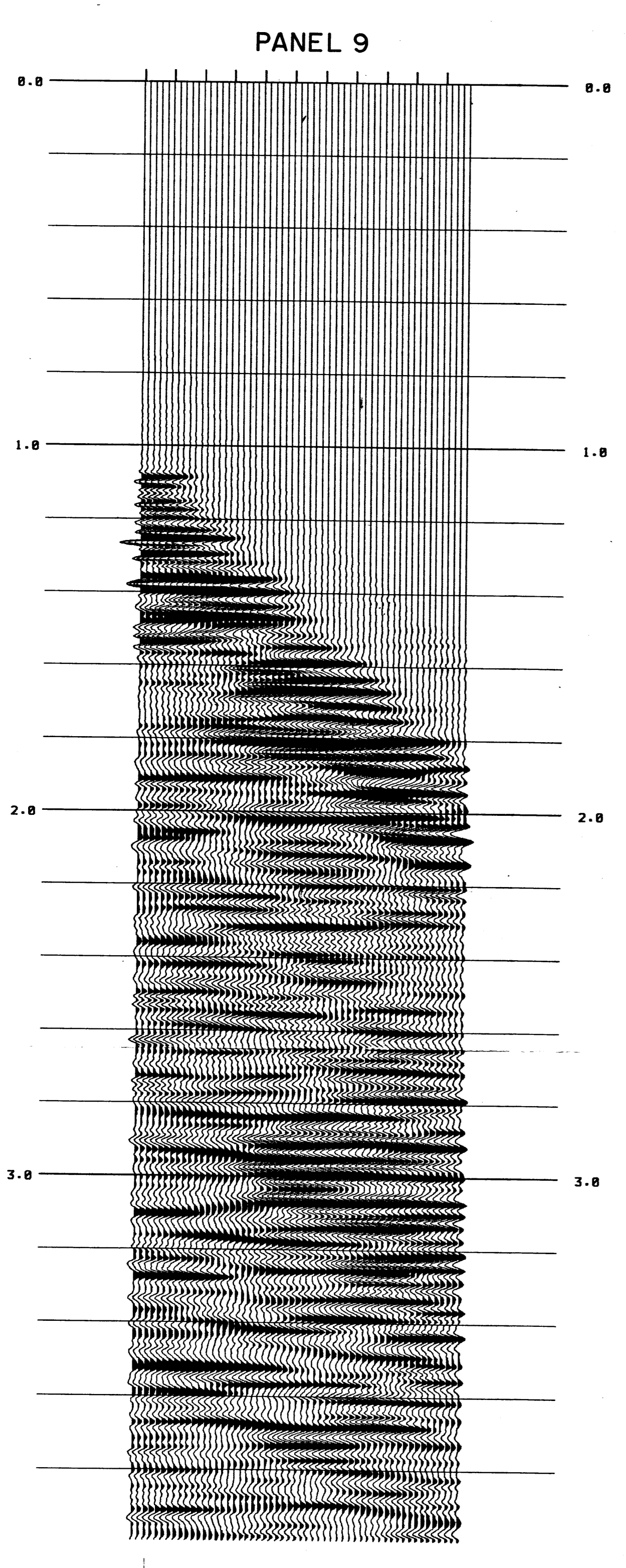
PROJECT : SPECIAL *DOWN WAVES FLAT, DECON, FK, AGC 1200*
 POLARITY NORMAL - POSITIVE DATA(4800 MILLS @2.000)
 SECOND AVERAGE USING 4 WINDOWS OVER ENTIRE TRACE
 LINE USP
 JOB NO. 18253
 PANEL NO. 1
 REF. * 0.1320E+09

PROJECT : SPECIAL *DOWN WAVES FLAT, DECON, FK, COHERE, AGC 1
 POLARITY NORMAL - POSITIVE DATA(4800 MILLS @2.000)
 SECOND AVERAGE USING 4 WINDOWS OVER ENTIRE TRACE
 LINE USP
 JOB NO. 18253
 PANEL NO. 1
 REF. * 0.0945E+08

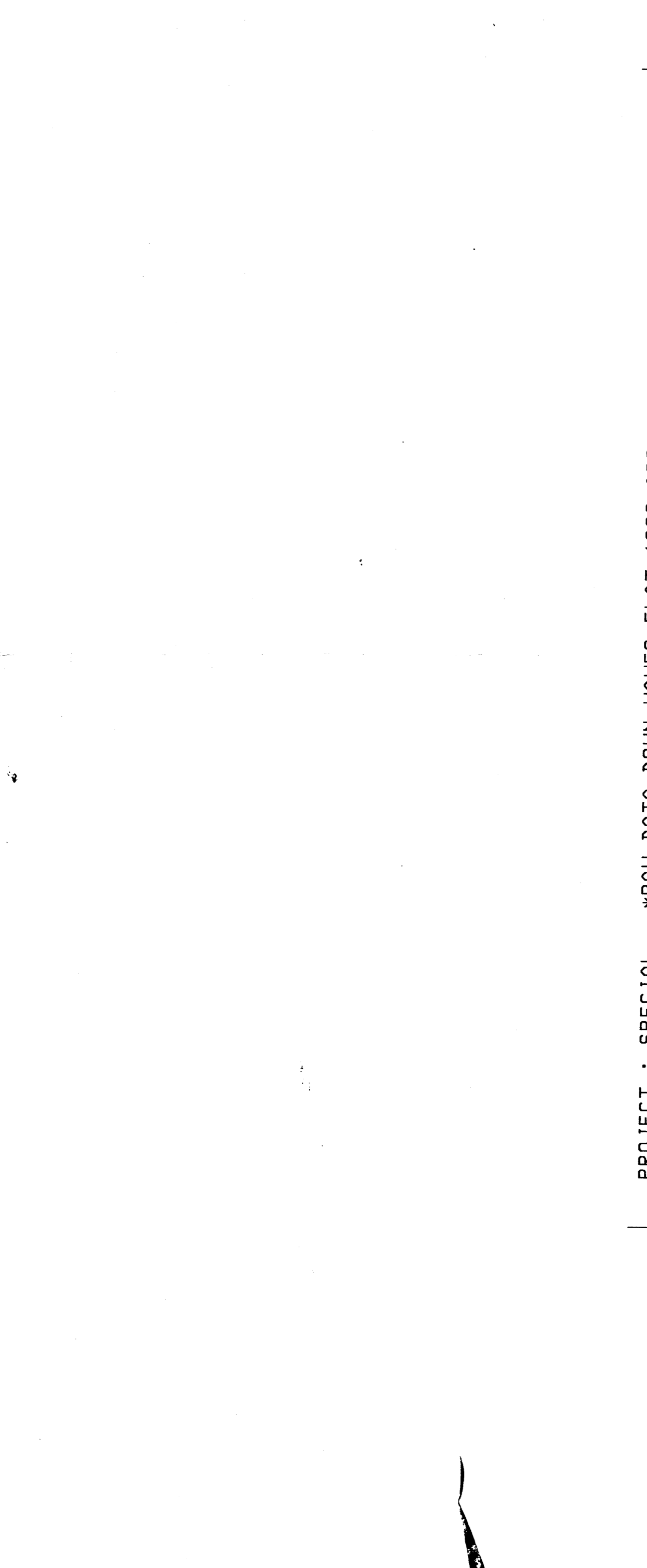


PROJECT : SPECIAL *DOWN WAVES FLAT, DECON, FK, COHERE, AGC 1
 POLARITY NORMAL - POSITIVE DATA(4800 MILLS @2.000)
 SECOND AVERAGE USING 4 WINDOWS OVER ENTIRE TRACE
 LINE USP
 JOB NO. 18253
 PANEL NO. 1
 REF. * 0.0945E+08

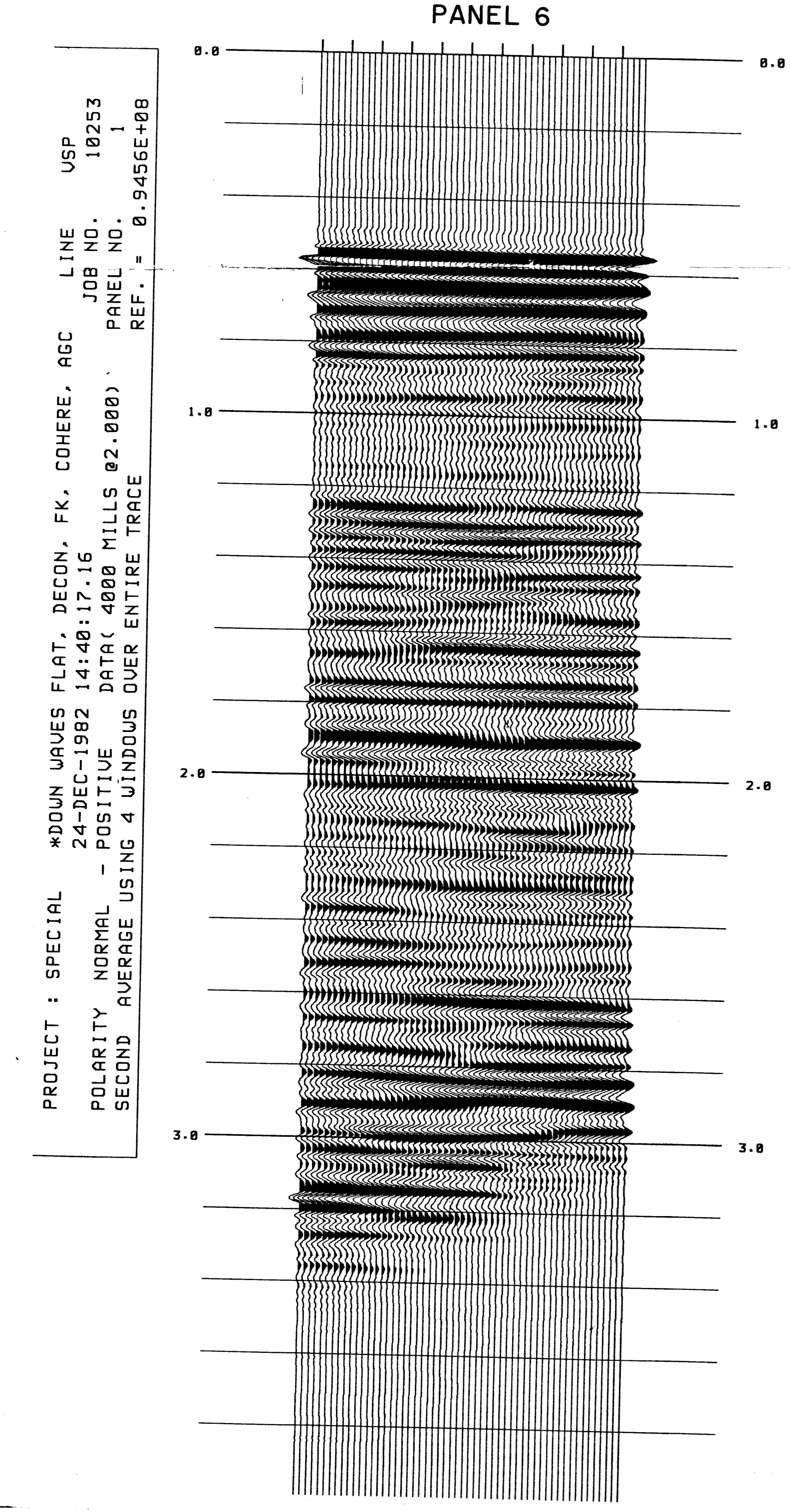
PROJECT : SPECIAL *DOWN WAVES FLAT, DECON, FK, COHERE, AGC 1
 POLARITY NORMAL - POSITIVE DATA(4800 MILLS @2.000)
 SECOND AVERAGE USING 4 WINDOWS OVER ENTIRE TRACE
 LINE USP
 JOB NO. 18253
 PANEL NO. 1
 REF. * 0.0945E+08



PROJECT : SPECIAL *UP WAVES FLAT, DECON, FK, COHERE, AGC 1
 POLARITY NORMAL - POSITIVE DATA(4800 MILLS @2.000)
 SECOND AVERAGE USING 4 WINDOWS OVER ENTIRE TRACE
 LINE USP
 JOB NO. 18258
 PANEL NO. 1
 REF. * 0.0848E+08



PROJECT : SPECIAL *RAW DATA, DOWN WAVES FLAT, 1200 AGC*
 POLARITY NORMAL - POSITIVE DATA(4800 MILLS @2.000)
 SECOND AVERAGE USING 4 WINDOWS OVER ENTIRE TRACE
 LINE USP
 JOB NO. 18233
 PANEL NO. 1
 REF. * 0.1166E+09



PROJECT : SPECIAL *DOWN WAVES FLAT, DECON, FK, COHERE, AGC 1
 POLARITY NORMAL - POSITIVE DATA(4800 MILLS @2.000)
 SECOND AVERAGE USING 4 WINDOWS OVER ENTIRE TRACE
 LINE USP
 JOB NO. 18253
 PANEL NO. 1
 REF. * 0.0945E+08