

# GEOGRAM\*

(Synthetic Seismogram)

Company: ESSO AUSTRALIA LTD  
 Well: WHALESARK 1  
 Field: WILDCAT  
 Country: AUSTRALIA  
 Reference No: 560821  
 Date Logged: 17-08-92  
 Location: 38 23 45.8' S 148 42 28.8' E  
 Elevations: NG: 22.00 DF: 21.70 GL: -716.9999  
 Permanent Datum: MSL  
 Depth Units: METRES

LOG INFORMATION  
 FIELD RECORDING: Engineer: KAWAKITA Location: Program Version: 324  
 COMPUTER: Analyst: T. BOWMAN Charts: 874 Barometer: 30.0  
 Logging Datum: ELEVATION ABOVE MEAN SEA LEVEL: 22.00  
 Seismic Reference Datum: 0.00  
 Some Calibration By Check Shots: YES Some Edited By Analyst: YES  
 Two-Way Time Sample Interval: 2 ms Environment: offshore

True Vertical Depth Corrections Applied:  
 Source of True Vertical Depth Data:  
 Maximum Hole Deviation:

Run	Date	Type	Blowout Depth	Charting Date	True Depth	Bottom Depth
1	17-08-92	SOT			2847 M	773 M
2	18-08-92		10 M BELOW HWS	15.8 M BELOW HWS		

**GEOGRAM MODEL ASSUMPTIONS**  
 Equal time slice model of horizontal plane layers  
 Plane acoustic waves at normal incidence  
 No intrinsic attenuation

**POLARITY**  
 An upgoing wave, reflected by an increase in acoustic impedance with depth, is displayed as a white trough under normal polarity.  
 A downgoing wave, reflected by a decrease in acoustic impedance with depth, is displayed as a white peak under normal polarity.

**SIGNATURES**  
 All signatures displayed in the Geogram results correspond to a wavelet convolved with a reflection coefficient of 0.5 (a decrease in acoustic impedance with depth).

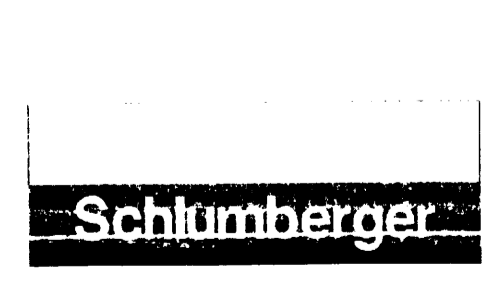
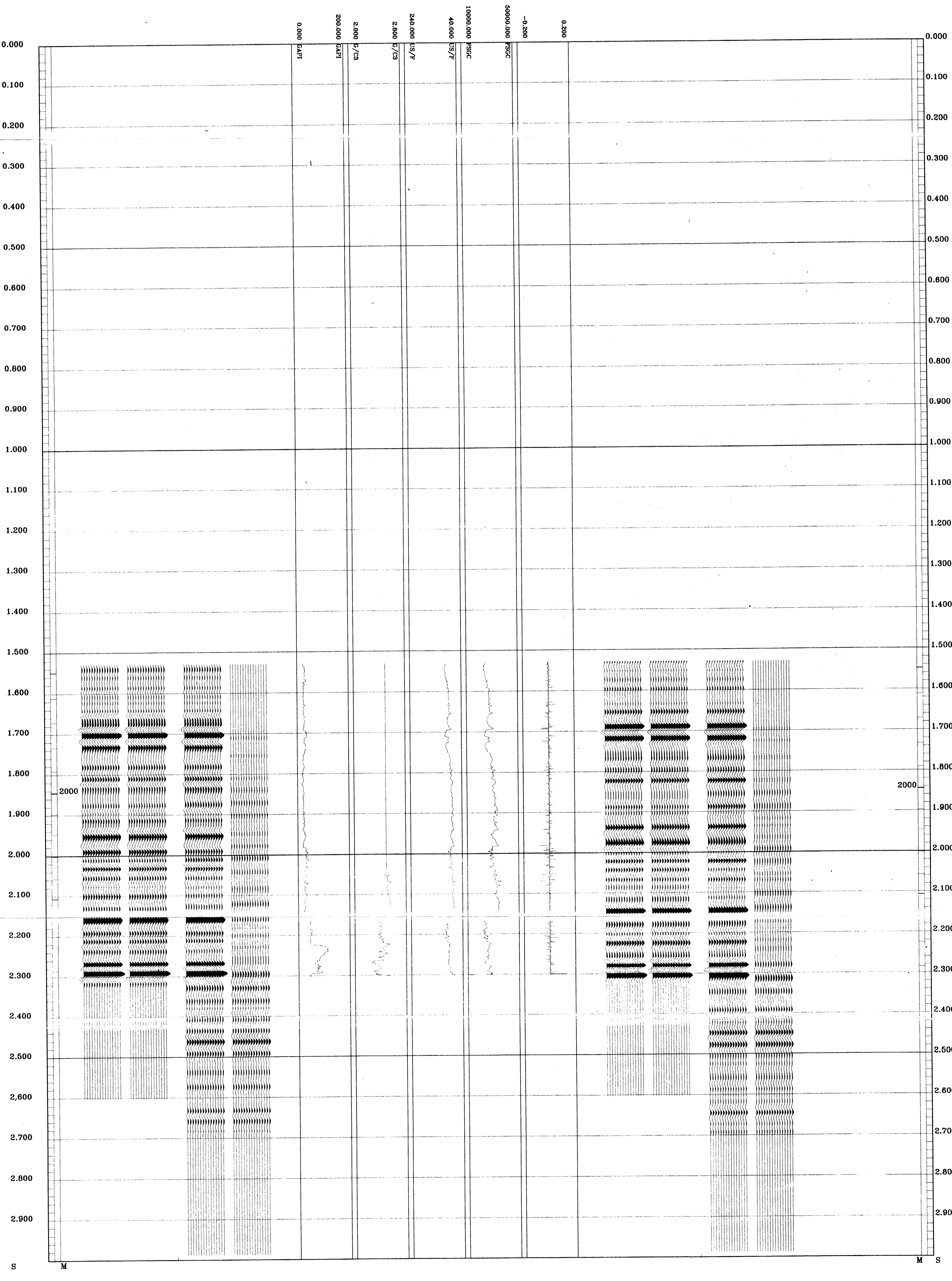
REMARKS

All interpretations are opinions based on inferences from electrical or other measurements and we cannot, and do not guarantee the accuracy or correctness of any interpretations. We shall not, except in the case of gross or willful negligence on the part of Schlumberger, be liable or responsible for any loss, cost or expense incurred or sustained by anyone resulting from any interpretations made by any of our officers, agents or employees. These interpretations are also subject to Clause 4 of our General Terms and Conditions as set out in our current Price Schedule.

CLIENT = ESSO AUSTRALIA LTD  
 FIELD = WILDCAT  
 WELL = WHALESARK 1

\*\* GEOGRAM \*\*  
 35 HERTZ ZERO PHASE  
 RICKER WAVELET WITH -90 DEG. PHASE SHIFT  
 WHALESARK-1

MULTIPLES ONLY REVERSE POLARITY
PRIMARIES AND MULTIPLES REVERSE POLARITY
PRIMARIES WITH TRANSMISSION LOSS REVERSE POLARITY
PRIMARIES REVERSE POLARITY
REFLECTION
ACOUSTIC IMPEDANCE
SONIC
DENSITY
GAMMA RAY
MULTIPLES ONLY NORMAL POLARITY
PRIMARIES AND MULTIPLES NORMAL POLARITY
PRIMARIES WITH TRANSMISSION LOSS NORMAL POLARITY
PRIMARIES NORMAL POLARITY



COMPANY ESSO AUSTRALIA LTD  
 FIELD WILDCAT  
 WELL WHALESARK 1  
 COUNTRY AUSTRALIA