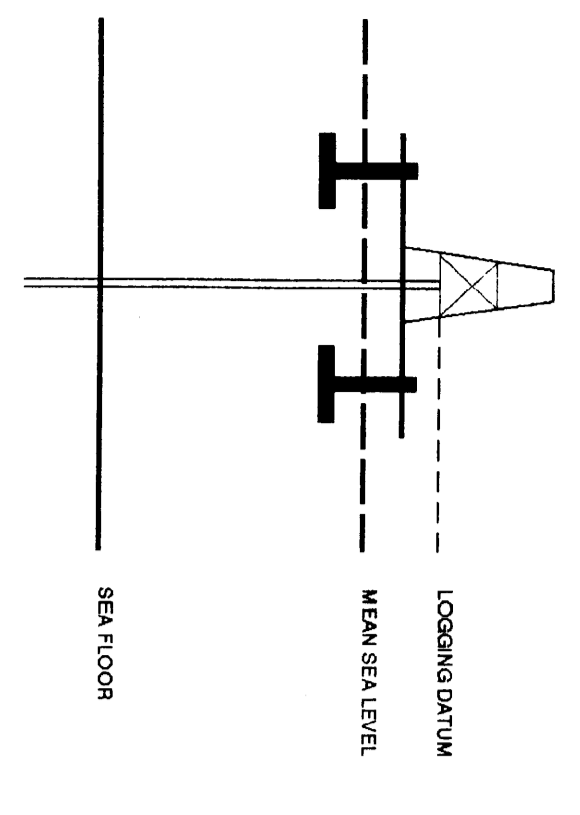




SEISMIC CALIBRATION LOG

(Adjusted Continuous Velocity Log)

Company: ESSO AUSTRALIA LTD
 Well: WHALESARK 1
 Field: WILDCAT
 Country: AUSTRALIA
 Reference No: 560821 Interval: 2947.00 to 1492.00
 Date Logged: 17-08-92 Date Processed: 27-8-92
 Location: 38 23 45.8' S 148 43 26.8' E
 Elevations: KB: 22.00 DF: 21.70 GL: -716.8999
 Permanent Datum: MSL Depth Units: METRES
 FIELD RECORDING: Engineer: R. HANRAHAN Location: Program Version: 32.1
 COMPILED BY: T. BOWMAN Name: STJ Baseline: 20.0
 ELEVATION ABOVE MEAN SEA LEVEL
 Logging Datum: 22.00
 Seismic Reference Datum: 0.00



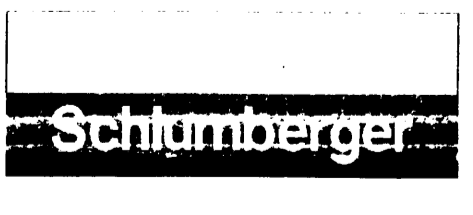
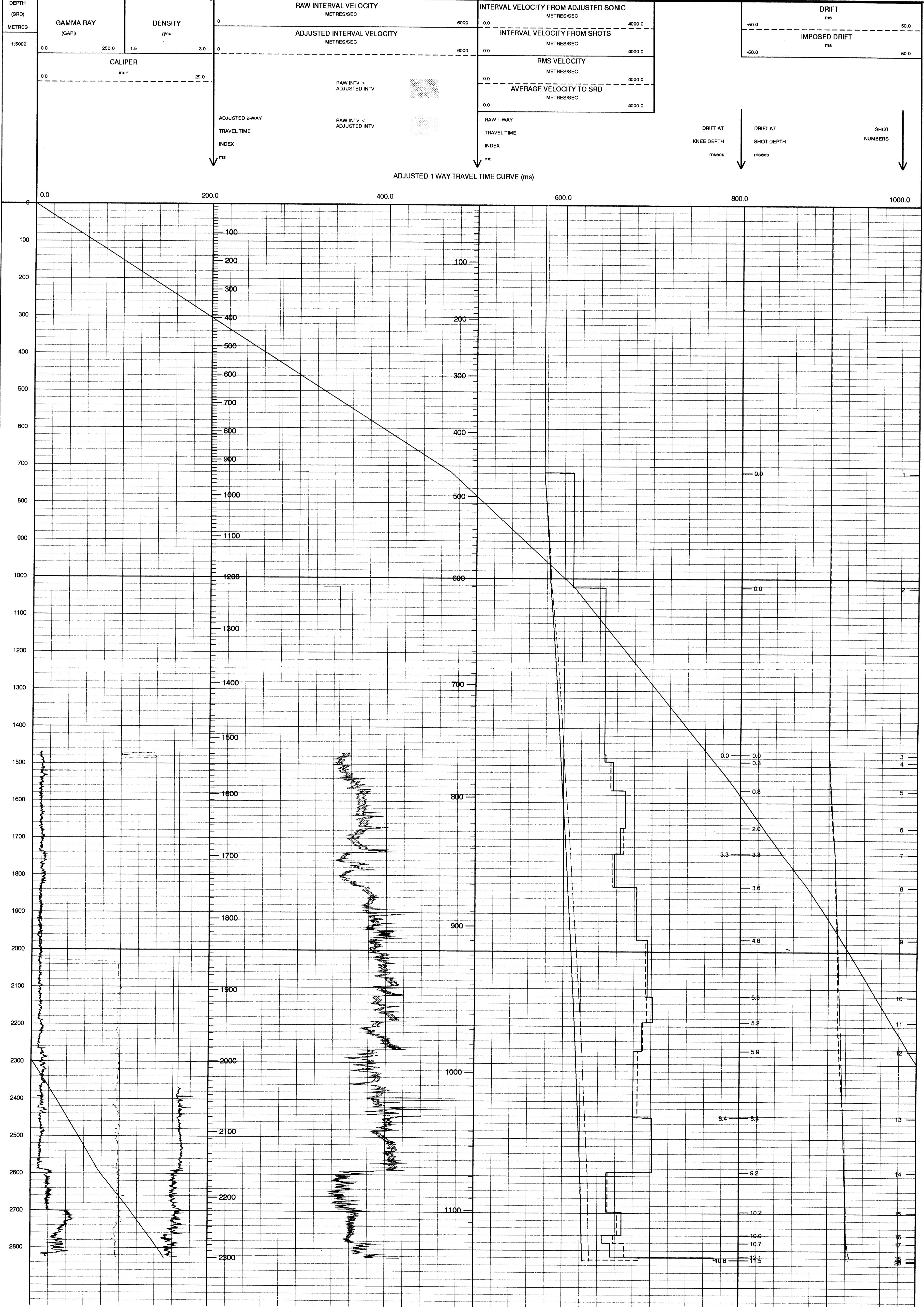
Total Number of Levels: 17
 Depth Reference: SHD
 Time Reference: SHD

| Run | Date | Tool Type | Bit Size | Depth | Change Size | Top Depth | Bottom Depth |
|---------|----------|-----------|----------|----------------|----------------|----------------|----------------|
| 1 | 17-08-92 | SST | | | | 2847 M | 773 M |
| VSP Run | Date | Gun | Hydro | Gun | Hydro | Gun | Hydro |
| 1 | 18-08-92 | OHM | OHM | 10 M BELOW NAL | 15 M BELOW NAL | 10 M BELOW NAL | 15 M BELOW NAL |

FOLD HERE

The well name, location and borehole reference data were furnished by the customer.

All interpretations are opinions based on inferences from electrical or other measurements and we cannot, and do not guarantee the accuracy or correctness of any interpretations, and we shall not, except in the case of gross or willful negligence on our part, be liable or responsible for any loss, costs, damages or expenses incurred or sustained by anyone resulting from any interpretations made by any of our officers, agents or employees. These interpretations are also subject to Clause 4 of our General Terms and Conditions as set out in our current Price Schedule.



COMPANY: ESSO AUSTRALIA LTD
 FIELD: WILDCAT
 WELL: WHALESARK 1
 COUNTRY: AUSTRALIA