

SEISMIC CALIBRATION LOG

(Adjusted Continuous Velocity Log)



Company: ESSO AUSTRALIA LTD

Well: TURRUM-6

Field: TURRUM

Country: AUSTRALIA

Reference No: SVJ-561162/561163 Interval: 2836 9998 to 140.00

Date Logged: 14 OCT 1995 Date Processed: 20 OCT 1995

Location: 038 14 11.108° S 148 10 24.948° E

Elevations: KB: 25.00 DF: 24.70 GL: -60.00

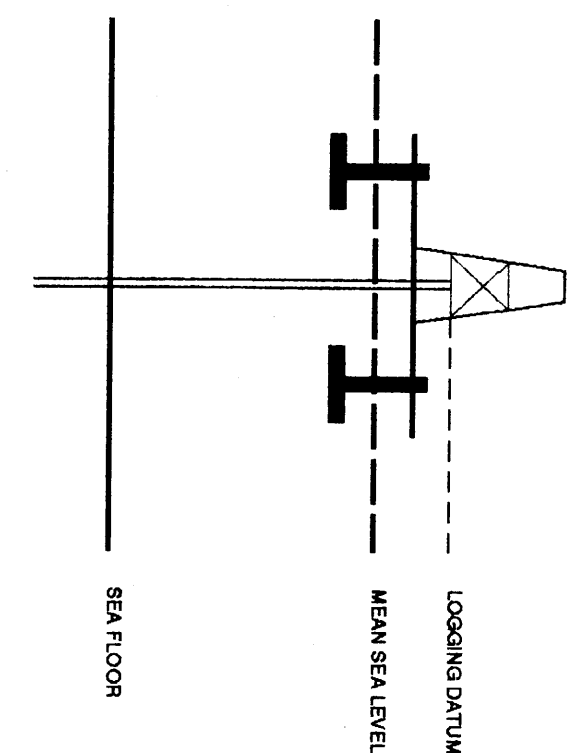
Permanent Datum: MSL Depth Units: METRES

FIELD RECORDING: Engineer: RICHMOND Location: Program Version: 70047

COMPUTATION: Analyst: STORIKASHNIKOFF Core: SVJ Barrels: 28.5

Logging Datum: 25.00

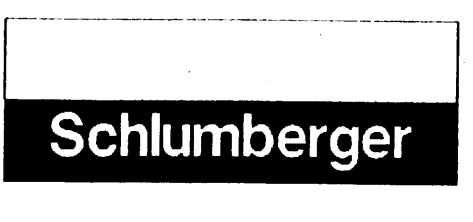
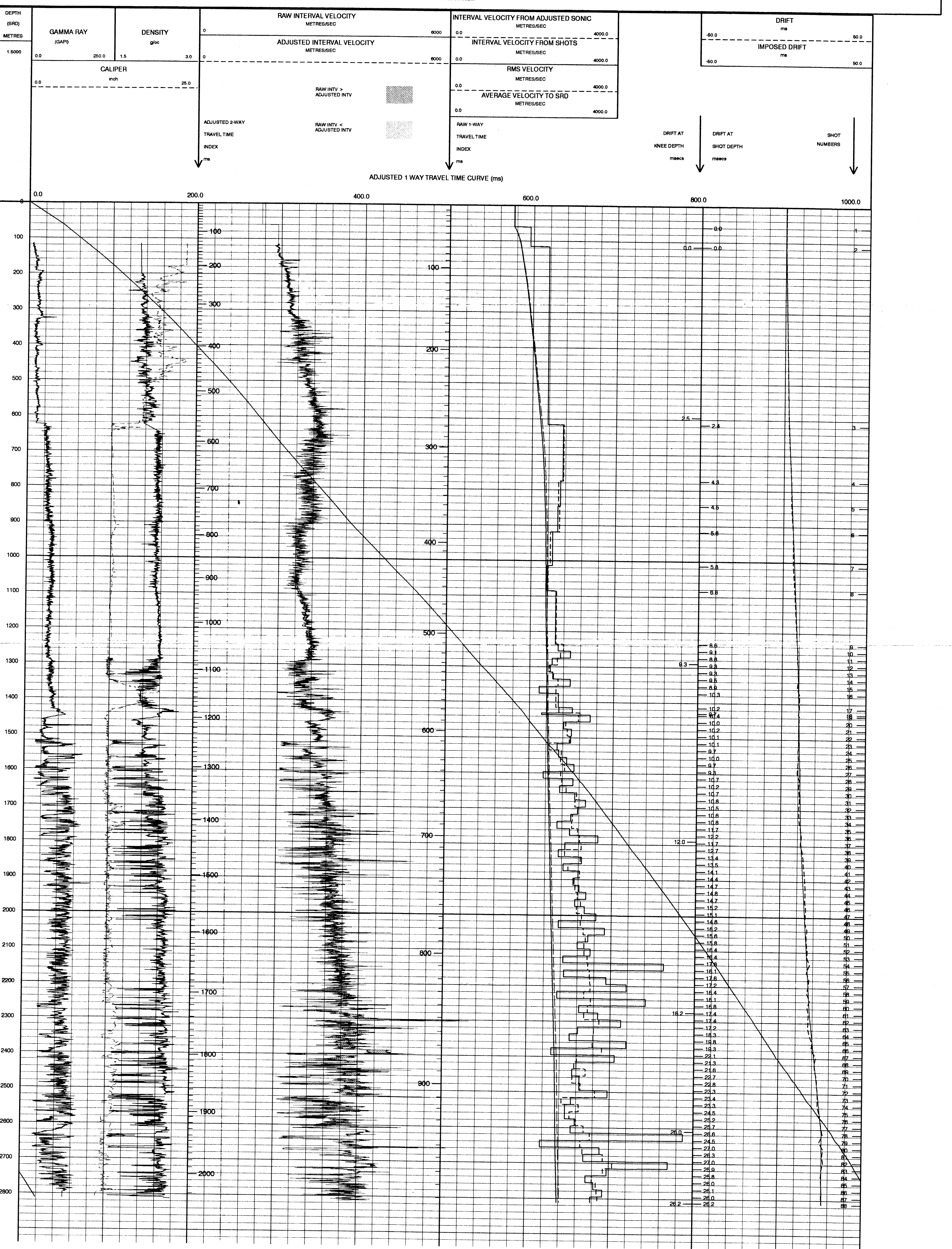
Seismic Reference Datum: 0.00



Total Number of Levels: 86
Depth Reference: SRD
Time Reference: SRD

Run	Date	Tool Type	Bit Size Depth	Change Size Depth	Top Depth	Bottom Depth	
1	28-09-95	DL-LD-CR	17.5 N	20.0 N	118 M	648 M	
2	14-10-95	DL-LD-CR	12.5 N	13.5 N	648.5 M	2840 M	
1	14-10-95	90 M	90 M	5 M BELOW MSL	10 M BELOW MSL	200 DEQ	200 DEQ

The well name, location and borehole reference data were furnished by the customer. All interpretations are opinions based on inferences from electrical or other measurements and we cannot, and do not guarantee the accuracy or correctness of any interpretations, and we shall not, except in the case of gross or willful negligence on our part, be liable or responsible for any loss, costs, damages or expenses incurred or sustained by anyone resulting from any interpretations made by any of our officers, agents or employees. These interpretations are also subject to Clause 4 of our General Terms and Conditions as set out in our current Price Schedule.



COMPANY ESSO AUSTRALIA LTD
FIELD TURRUM
WELL TURRUM-6
COUNTRY AUSTRALIA