

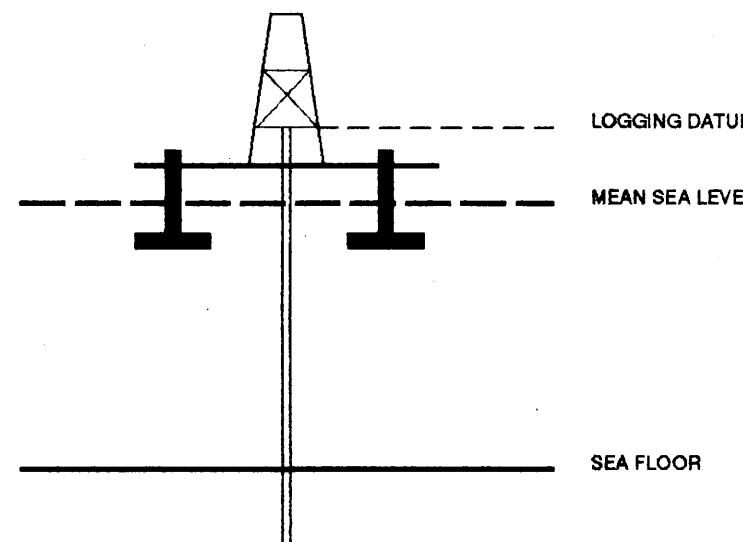


VERTICAL SEISMIC PROFILE

ZERO OFFSET VSP PLOT 5
WAVESHAPING & CORRIDOR STACK
(-90 DEG. phase)

Company: ESSO AUSTRALIA LTD
Well: TURRUM-6
Field: TURRUM
Country: AUSTRALIA
Reference No: SYJ-561162/561163 Interval: 2836.998 to 140.00
Date Logged: 14 OCT. 1995 Date Processed: 20 OCT 1995
Location: 038 14' 11.108" S 148 10' 24.946" E
Elevations: KB: 25.00 DF: 24.70 GL: -60.00
Permanent Datum: MSL Depth Units: METRES
FIELD RECORDING: Engineer: R.JONSSON Location: 700-427
COMPUTATION: Analyst: S.TONERKASHNEV Centre: SYJ Baseline: 20.5

ELEVATION ABOVE MEAN SEA LEVEL
Logging Datum: 25.00
Seismic Reference Datum: 0.00



Total Number of Levels: 86
Depth Reference: SRD
Time Reference: SRD

Run	Date	Tool Type	Bit Size/Depth	Casing Size/Depth	Top Depth	Bottom Depth
1	26-06-95	DLL-LDLGR	17.5 IN	30.0 IN	116 M	649 M
2	12-10-95	DLL-LDLGR	12.2 IN	13.3 IN	645.5 M	2840 M

VSP Run	Date	Gun Offset	Hydro Offset	Gun Elevation	Hydro Elevation	Gun Azimuth	Hydro Azimuth
1	14-10-95	50 M	50 M	5 M BELOW MSL	10 M BELOW MSL	220 DEG	220 DEG

REMARKS

The well name, location and tool type data were furnished by the customer. All interpretations are opinions based on information from electrical or other measurements and we cannot and do not guarantee the accuracy or correctness of any interpretations, and we shall not, except in the case of gross or willful negligence on our part, be liable or responsible for any loss, cost, damage or expense incurred by or for our clients, agents or employees. These interpretations are also subject to the terms and conditions of our Standard Terms and Conditions as set out in our current Price Schedule.

*** CORRIDOR STACK + AGC ***
AGC WINDOW : 300 MS
PHASE ROTATION APPLIED : -90 DEG.
POLARITY (S.E.G.) : REVERSE

*** CORRIDOR STACK ***
CORRIDOR WINDOW : 200 MS
PHASE ROTATION APPLIED : -90 DEG.
POLARITY (S.E.G.) : REVERSE

**** WAVESHAPING ****
WAVESHAPING DECONVOLUTION
ZERO PHASE
ENHANCED UPGOING WAVEFIELD

PROCESSING SEQUENCE:
MEDIAN STACK APPLIED
STATIC CORRECTION TO MSL: 6.56 MS
BAND PASS FILTER : 5-70 HZ
NORMALISATION GATE : 100 MS
TIME VARYING GAIN : (T/T0)**1.00

DOWNGOING WAVEFIELD SUBTRACTION
PHASE ROTATION APPLIED : -90 DEG.
WAVESHAPING DECONVOLUTION:
5-70 HZ ZERO PHASE WAVELET
OPERATOR LENGTH : 1.00 S
PREWHITENING : 2 %

5 LEVEL ENHANCED UPGOING WAVEFIELD
VERTICAL SCALE : 10 CM/SEC
POLARITY (S.E.G.) : REVERSE

*** CORRIDOR STACK + AGC ***
PHASE ROTATION APPLIED : -90 DEG.
AGC WINDOW : 300 MS
POLARITY (S.E.G.) : NORMAL

*** CORRIDOR STACK ***
PHASE ROTATION APPLIED : -90 DEG.
CORRIDOR WINDOW : 200 MS
POLARITY (S.E.G.) : NORMAL

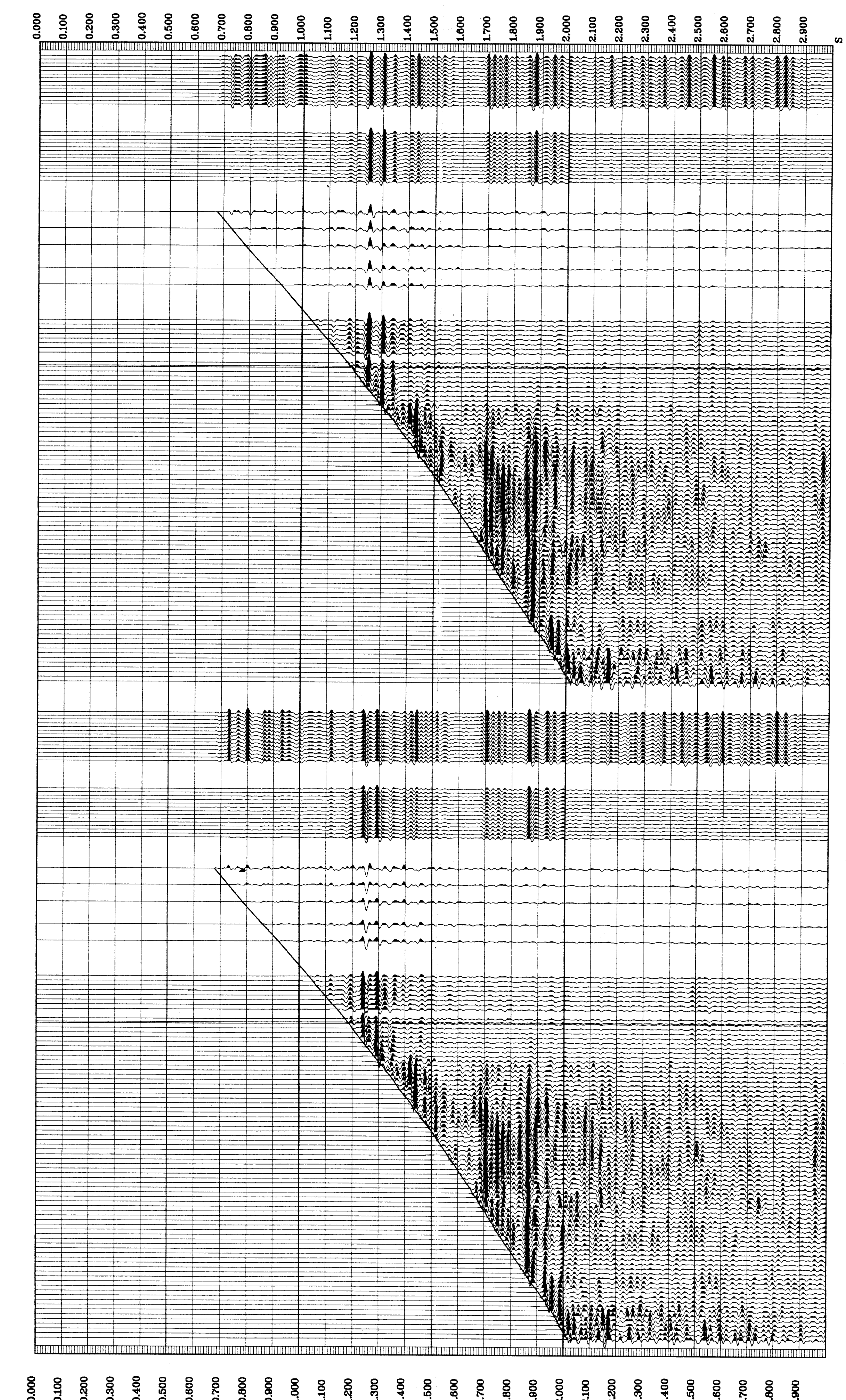
**** WAVESHAPING ****
WAVESHAPING DECONVOLUTION
ZERO PHASE
ENHANCED UPGOING WAVEFIELD

PROCESSING SEQUENCE:
MEDIAN STACK APPLIED
STATIC CORRECTION TO MSL: 6.56 MS
BAND PASS FILTER : 5-70 HZ
NORMALISATION GATE : 100 MS
TIME VARYING GAIN : (T/T0)**1.00

DOWNGOING WAVEFIELD SUBTRACTION
PHASE ROTATION APPLIED : -90 DEG.
WAVESHAPING DECONVOLUTION:
5-70 HZ ZERO PHASE WAVELET
OPERATOR LENGTH : 1.00 S
PREWHITENING : 2 %

5 LEVEL ENHANCED UPGOING WAVEFIELD
VERTICAL SCALE : 10 CM/SEC
POLARITY (S.E.G.) : NORMAL

RAW DEPTH M	TRUE VERTICAL DEPTH MSL M	TRANSIT TIME S	LEVEL NO
0.0	0.0	0.000	0
0.0	0.0	0.000	0
0.0	0.0	0.000	0
0.0	0.0	0.000	0
0.0	0.0	0.000	0
0.0	0.0	0.000	0
0.0	0.0	0.000	0
1996.0	1995.0	0.789	44
800.0	775.0	0.339	86
870.1	845.1	0.385	85
945.1	915.1	0.393	84
1099.0	1014.0	0.431	83
1110.0	1065.0	0.441	82
1280.0	1255.0	0.528	80
1320.0	1295.0	0.541	78
1360.0	1335.0	0.557	76
1400.0	1375.0	0.575	74
1450.0	1430.0	0.593	72
1480.0	1465.0	0.601	70
1520.1	1495.1	0.614	67
1560.0	1535.0	0.629	65
1600.0	1575.0	0.643	63
1640.0	1615.0	0.658	61
1680.1	1655.1	0.672	59
1720.1	1695.1	0.684	57
1760.1	1735.1	0.697	55
1800.0	1775.0	0.711	53
1839.9	1814.9	0.724	51
1880.0	1855.0	0.737	49
1920.1	1895.1	0.751	47
1960.1	1935.1	0.765	45
2000.0	1975.0	0.778	43
2040.1	2015.1	0.797	41
2080.1	2055.1	0.800	39
2120.1	2095.1	0.812	37
2160.0	2135.0	0.825	35
2200.1	2175.1	0.836	33
2240.1	2215.1	0.846	31
2280.0	2255.0	0.857	29
2320.1	2295.1	0.868	27
2360.0	2335.0	0.879	25
2400.1	2375.1	0.890	23
2440.1	2415.1	0.903	21
2480.1	2455.1	0.916	19
2520.0	2495.0	0.928	17
2560.1	2535.1	0.939	15
2600.0	2575.0	0.950	13
2640.0	2615.0	0.956	11
2680.0	2655.0	0.978	9
2720.0	2695.0	0.989	7
2760.0	2735.0	0.999	5
2800.0	2775.0	1.009	3



COMPANY: ESSO AUSTRALIA LTD
FIELD: TURRUM
WELL: TURRUM-6
COUNTRY: AUSTRALIA

