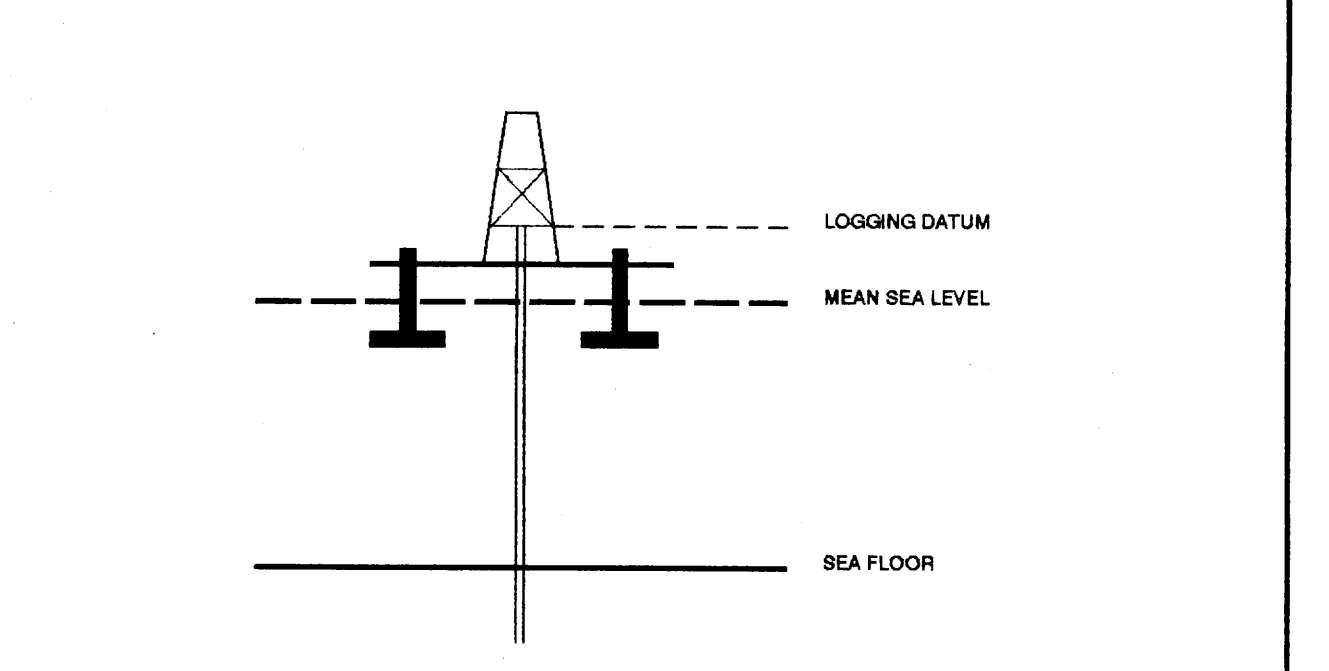


# VERTICAL SEISMIC PROFILE

ZERO OFFSET VSP PLOT 5  
WAVESHAPING & CORRIDOR STACK

Company: ESSO AUSTRALIA LTD  
Well: TURRUM-6  
Field: TURRUM  
Country: AUSTRALIA  
Reference No: SYJ-561162/561163 Interval: 2836.9998 to 140.00  
Date Logged: 14 OCT. 1995 Date Processed: 20 OCT 1995  
Location: 038 14' 11.108" S 148 10' 24.948" E  
Elevations: KB: 25.00 DF: 24.70 GL: -60.00  
Permanent Datum: MSL Depth Units: METRES  
FIELD RECORDING: Engineer: R.JONSSON Location: Program Version: 700-427  
COMPUTATION: Analyst: S.TCHERKASHNEV Centre: SYJ Baseline: 20.5  
ELEVATION ABOVE MEAN SEA LEVEL  
Logging Datum: 25.00  
Seismic Reference Datum: 0.00



Total Number of Levels: 86  
Depth Reference: SRD  
Time Reference: SRD

Run	Date	Tool Type	Bit Size/Depth	Casing Size/Depth	Top Depth	Bottom Depth
1	26-08-95	DLL-LDL-GR	17.5 IN	30.0 IN	118 M	642 M
2	12-10-95	DLL-LDL-GR	12.2 IN	13.3 IN	648.5 M	2840 M

VSP Run	Date	Gun Offset	Hydro Offset	Gun Elevation	Hydro Elevation	Gun Azimuth	Hydro Azimuth
1	14-10-95	50 M	50 M	5 M BELOW MSL	10 M BELOW MSL	220 DEG	220 DEG

REMARKS  
FOLD HERE

All interpretations are opinions based on information from electrical or other measurements and we warrant, and do not guarantee the accuracy or correctness of any interpretation. We warrant that the interpretation is based on the information provided to us and that we have exercised reasonable care in the preparation of the interpretation. We warrant that the interpretation is based on the information provided to us and that we have exercised reasonable care in the preparation of the interpretation. We warrant that the interpretation is based on the information provided to us and that we have exercised reasonable care in the preparation of the interpretation. Please refer to our General Terms and Conditions as set out in our current Price Schedule.

**\* CORRIDOR STACK + AGC \***  
AGC WINDOW : 300 MS  
POLARITY (S.E.G.) : REVERSE

**\* CORRIDOR STACK \***  
CORRIDOR WINDOW : 200 MS  
POLARITY (S.E.G.) : REVERSE

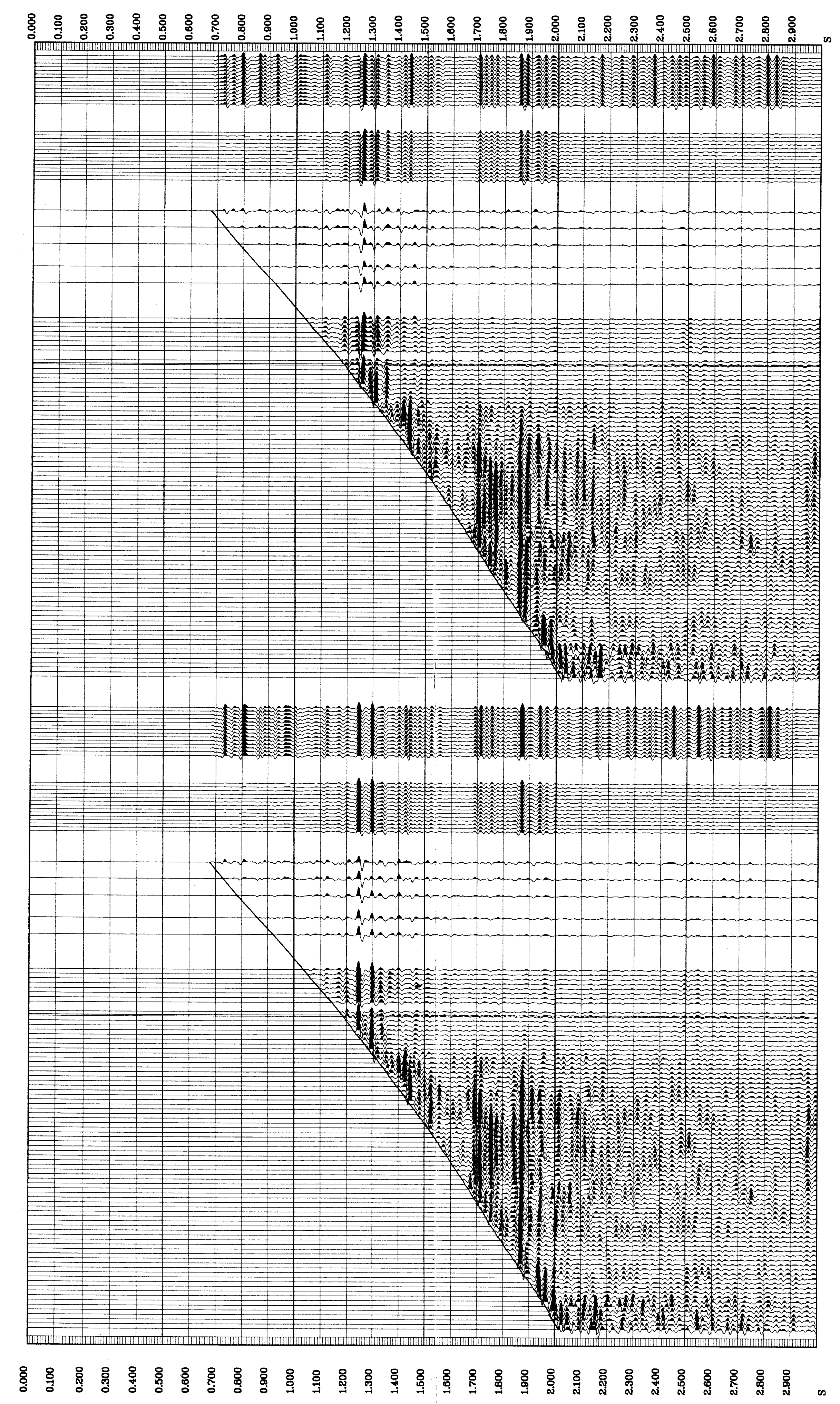
**\*\* WAVESHAPING \*\***  
WAVESHAPING DECONVOLUTION  
ZERO PHASE  
ENHANCED UPGOING WAVEFIELD  
PROCESSING SEQUENCE:  
MEDIAN STACK APPLIED  
STATIC CORRECTION TO MSL: 6.56 MS  
BAND PASS FILTER : 5-70 HZ  
NORMALISATION GATE : 100 MS  
TIME VARYING GAIN : (T/TO)\*\*1.00  
DOWNGOING WAVEFIELD SUBTRACTION  
WAVESHAPING DECONVOLUTION:  
5-70 HZ ZERO PHASE WAVELET  
OPERATOR LENGTH : 1.00 S  
PREWHITENING : 2 %  
5 LEVEL ENHANCED UPGOING WAVEFIELD  
VERTICAL SCALE : 10 CM/SEC  
POLARITY (S.E.G.) : REVERSE

**\* CORRIDOR STACK + AGC \***  
AGC WINDOW : 300 MS  
POLARITY (S.E.G.) : NORMAL

**\* CORRIDOR STACK \***  
CORRIDOR WINDOW : 200 MS  
POLARITY (S.E.G.) : NORMAL

**\*\* WAVESHAPING \*\***  
WAVESHAPING DECONVOLUTION  
ZERO PHASE  
ENHANCED UPGOING WAVEFIELD  
PROCESSING SEQUENCE:  
MEDIAN STACK APPLIED  
STATIC CORRECTION TO MSL: 6.56 MS  
BAND PASS FILTER : 5-70 HZ  
NORMALISATION GATE : 100 MS  
TIME VARYING GAIN : (T/TO)\*\*1.00  
DOWNGOING WAVEFIELD SUBTRACTION  
WAVESHAPING DECONVOLUTION:  
5-70 HZ ZERO PHASE WAVELET  
OPERATOR LENGTH : 1.00 S  
PREWHITENING : 2 %  
5 LEVEL ENHANCED UPGOING WAVEFIELD  
VERTICAL SCALE : 10 CM/SEC  
POLARITY (S.E.G.) : NORMAL

RAW DEPTH M	TRUE VERTICAL DEPTH MSL M	TRANSIT TIME S	LEVEL NO
0.0	0.0	0.000	0
0.0	0.0	0.000	0
0.0	0.0	0.000	0
0.0	0.0	0.000	0
0.0	0.0	0.000	0
1980.0	1965.0	0.789	44
0.0	0.0	0.000	0
0.0	0.0	0.000	0
0.0	0.0	0.000	0
0.0	0.0	0.000	0
0.0	0.0	0.000	0
1980.0	1965.0	0.789	44
800.0	775.0	0.339	86
870.1	845.1	0.385	85
943.1	913.1	0.393	84
1039.0	1014.0	0.431	83
1110.0	1085.0	0.481	82
1290.0	1255.0	0.528	80
1320.0	1285.0	0.541	78
1360.0	1330.0	0.557	76
1400.0	1375.0	0.573	74
1450.0	1430.0	0.582	72
1480.0	1465.0	0.601	69
1520.1	1495.1	0.614	67
1560.0	1535.0	0.629	65
1600.0	1575.0	0.643	63
1640.0	1615.0	0.658	61
1680.1	1655.1	0.672	59
1720.1	1695.1	0.684	57
1760.1	1735.1	0.697	55
1800.0	1775.0	0.711	53
1839.9	1814.9	0.724	51
1880.0	1855.0	0.737	49
1920.1	1895.1	0.751	47
1960.1	1935.1	0.763	45
2000.0	1975.0	0.776	43
2040.1	2015.1	0.787	41
2080.1	2055.1	0.800	39
2120.1	2095.1	0.812	37
2160.0	2135.0	0.825	35
2200.1	2175.1	0.835	33
2240.1	2215.1	0.845	31
2280.0	2255.0	0.857	29
2320.1	2295.1	0.868	27
2360.0	2335.0	0.879	25
2400.1	2375.1	0.890	23
2440.1	2415.1	0.903	21
2480.1	2455.1	0.916	19
2520.0	2495.0	0.929	17
2560.1	2535.1	0.939	15
2600.0	2575.0	0.950	13
2640.0	2615.0	0.960	11
2680.0	2655.0	0.978	9
2720.0	2695.0	0.999	7
2760.0	2735.0	1.000	5
2800.0	2775.0	1.009	3



COMPANY: ESSO AUSTRALIA LTD  
FIELD: TURRUM  
WELL: TURRUM-6  
COUNTRY: AUSTRALIA

**Schlumberger**