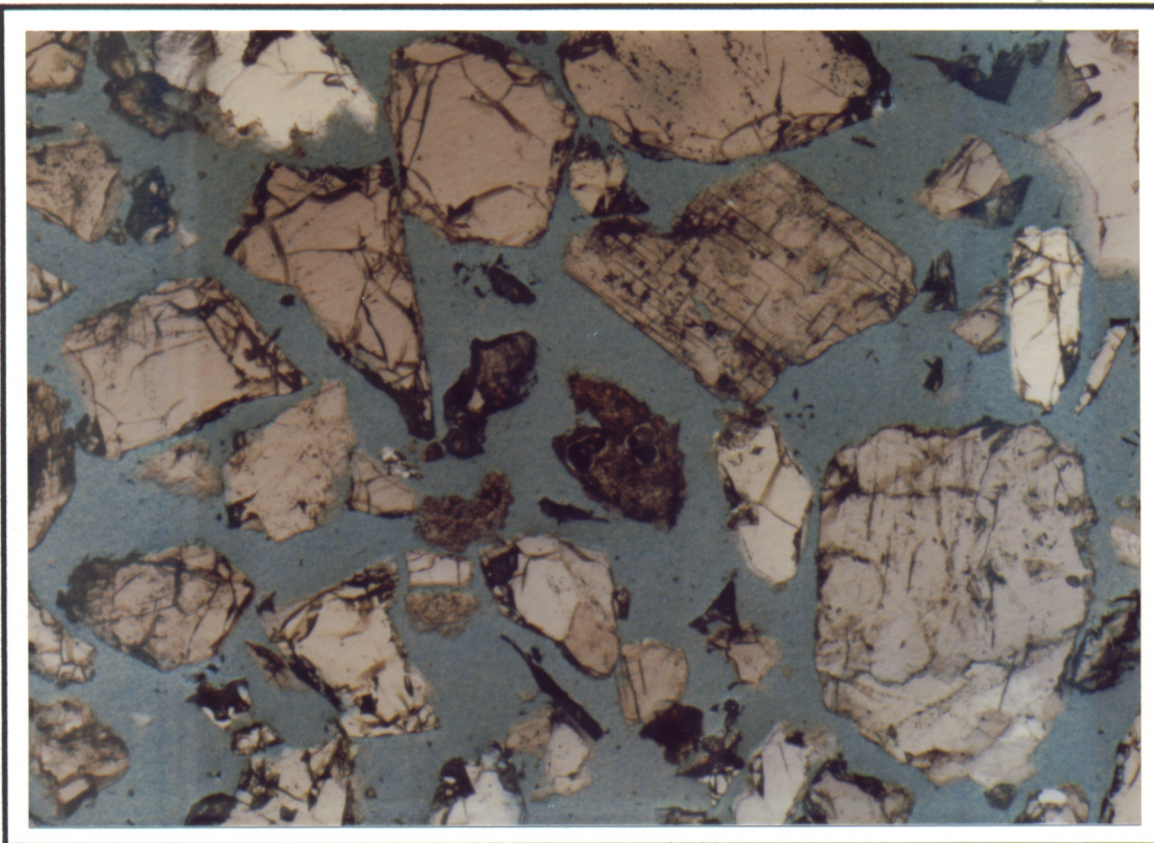
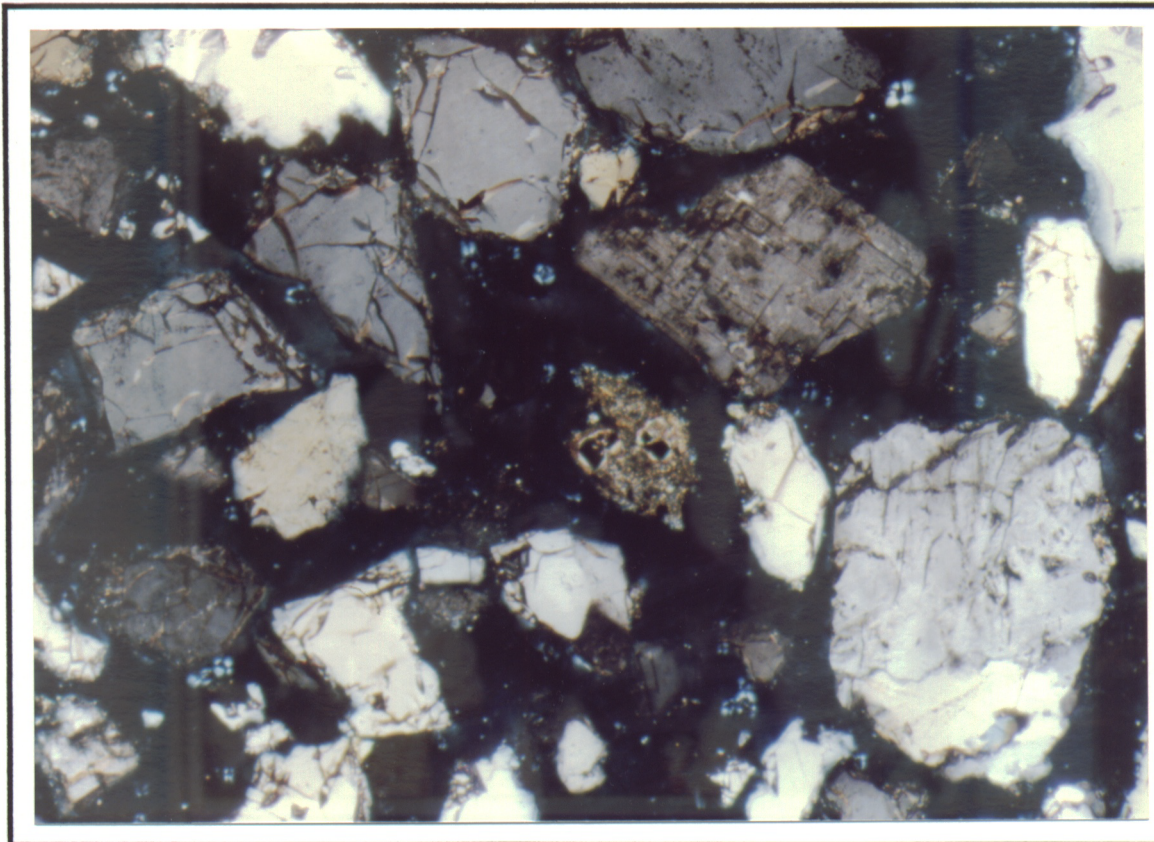




A



B



**Figure 7:** GC333-7, Devilfish-1, cuttings. Latrobe Group quartz sandstone. Very similar to GC333-6. Calcite cemented foraminifera in photo. Diagenetic kaolinite very rare.

A . Plane polarised light  
B . Crossed polarised light

Width of field of view = 2.20 mm  
Width of field of view = 2.20 mm

DEPT. NAT. RES &amp; ENV



PE906416