

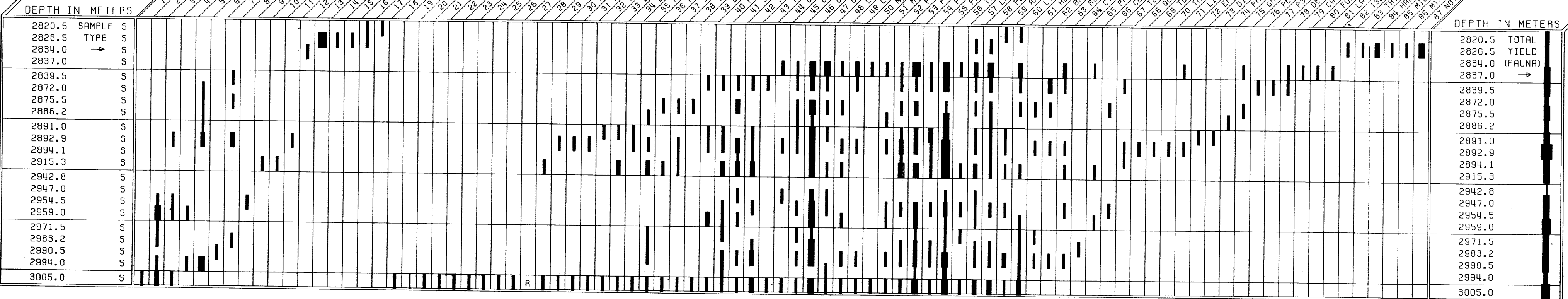
# PALYNOLOGICAL RANGE CHART: TERAKIHI-1, GIPPSLAND BASIN.

DEPT. NAT. RES & ENV  
PE900495

SPECIES →

LEGEND

I VERY RARE  
 ■ RARE  
 ■ FEW  
 ■ COMMON  
 ■ ABUNDANT  
 ■ VERY ABUNDANT  
 × PRESENT  
 R REWORKED  
 C CONTAMINANT



DEPTH IN METERS	SAMPLE TYPE	SPECIES	DEPTH IN METERS
2820.5	S		2820.5
2826.5	S		2826.5
2834.0	S		2834.0
2837.0	S		2837.0
2839.5	S		2839.5
2872.0	S		2872.0
2875.5	S		2875.5
2886.2	S		2886.2
2891.0	S		2891.0
2892.9	S		2892.9
2894.1	S		2894.1
2915.3	S		2915.3
2942.8	S		2942.8
2947.0	S		2947.0
2954.5	S		2954.5
2959.0	S		2959.0
2971.5	S		2971.5
2983.2	S		2983.2
2990.5	S		2990.5
2994.0	S		2994.0
3005.0	S		3005.0

DEPTH IN METERS	TOTAL YIELD (FAUNA)
2820.5	TOTAL
2826.5	YIELD
2834.0	(FAUNA)
2837.0	→
2839.5	
2872.0	
2875.5	
2886.2	
2891.0	
2892.9	
2894.1	
2915.3	
2942.8	
2947.0	
2954.5	
2959.0	
2971.5	
2983.2	
2990.5	
2994.0	
3005.0	