

Schlumberger CONTINUOUS DIPMETER

DEPT. NAT. RES. & ENV.
PE603822

Location of Well
Lat: 38° 00' 25" S

RE-NAMED
(AUG. 1968)
TJUNA 1

COUNTRY AUSTRALIA
FIELD WILDCAT
WELL TUNA A-1
COMPANY ESSO

STATE VICTORIA
COUNTRY AUSTRALIA

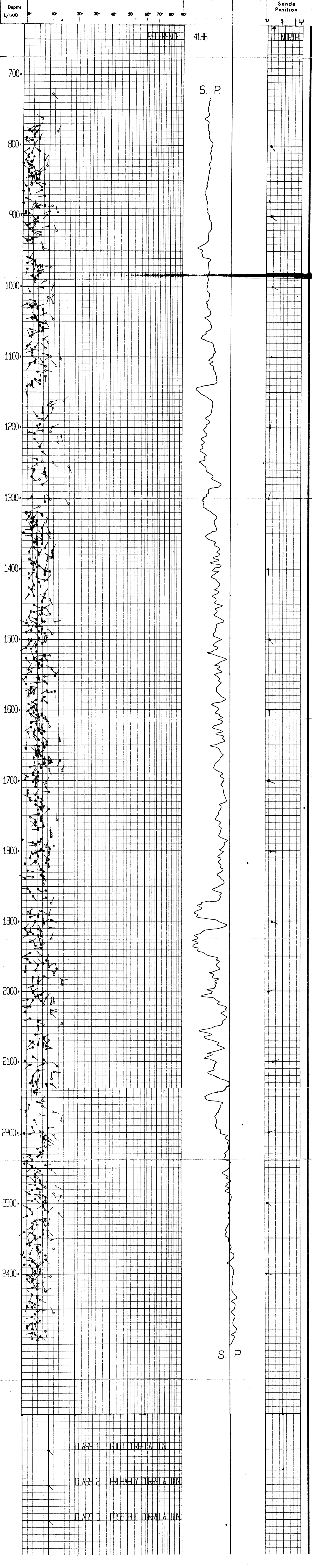
COMPANY ESSO STANDARD OIL (AUST.) LTD.
WELL TUNA A-1
FIELD WILDCAT
LOCATION

Elevation: R.T.:
D.F.:
K.B.:
or G.L.:

RUN No. ONE TWO THREE

DATE	10-5-68
Casing Depth Schlumberger	795
" " Driller	2199
Total Depth Schlumberger	2300
" " Driller	2199
" " Reached	no
Bit Size	1 1/2" to T.D.
Mud Nature	Freshwater Gel
" Density	1.13
" Viscosity	42
B.H.T.	1.89 at 0.7 F.
Logging Speed	100 ft/hr
Log Reading	2490
Interval measured	1721
Equipment	MTI
Truck number	OSL-14073
Observer	Stiller
Controlled by	Lewis
Computed by	I.H.N. 1130
Printed by	I.H.N. 1127
Magnetic Declination	12° E
Levels	729
Reference	1196

Correlation Class: 1, Good 2, Fair 3, Possible



* 3 armed dipmeter analog recording.

** hand correlation