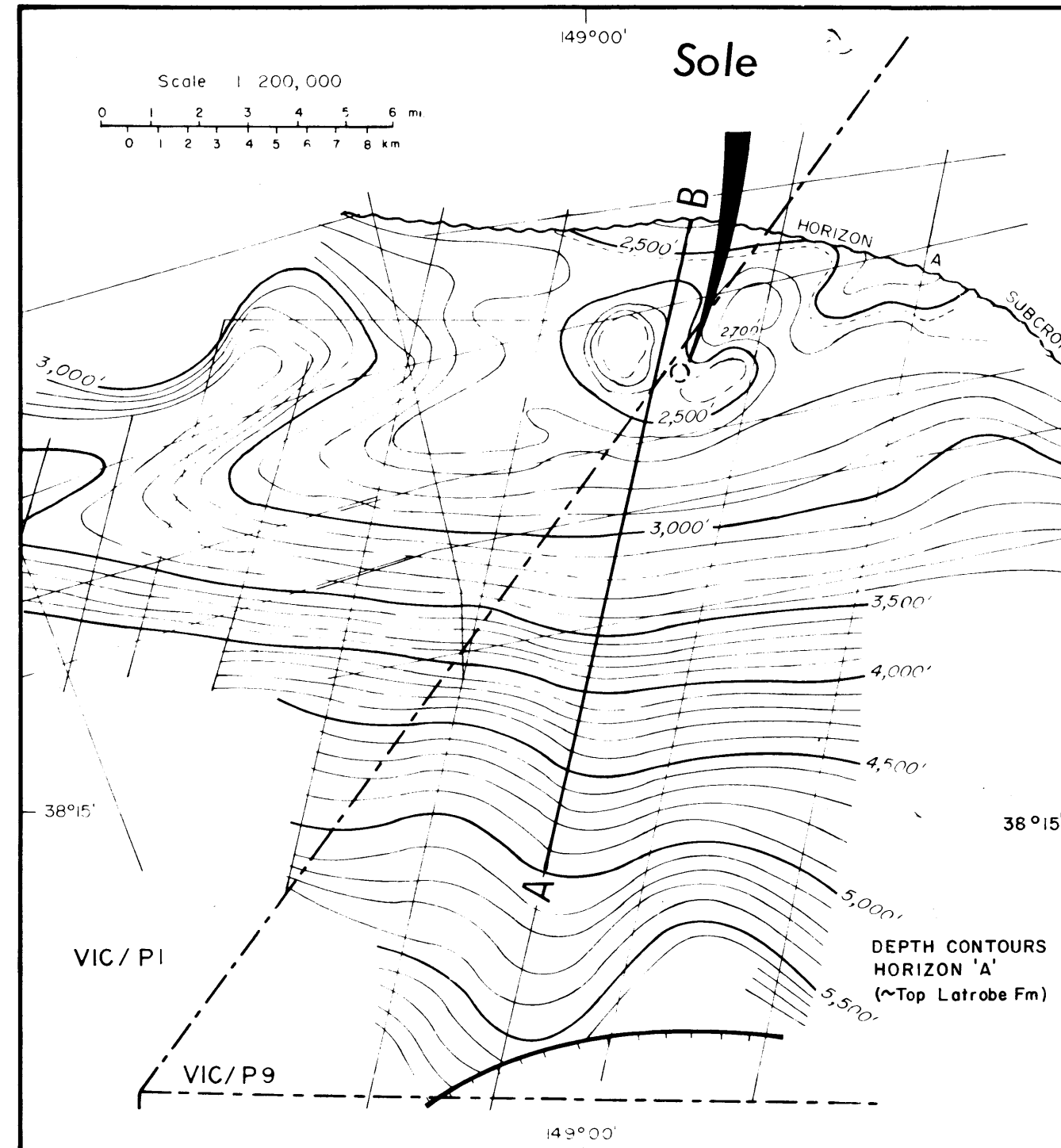
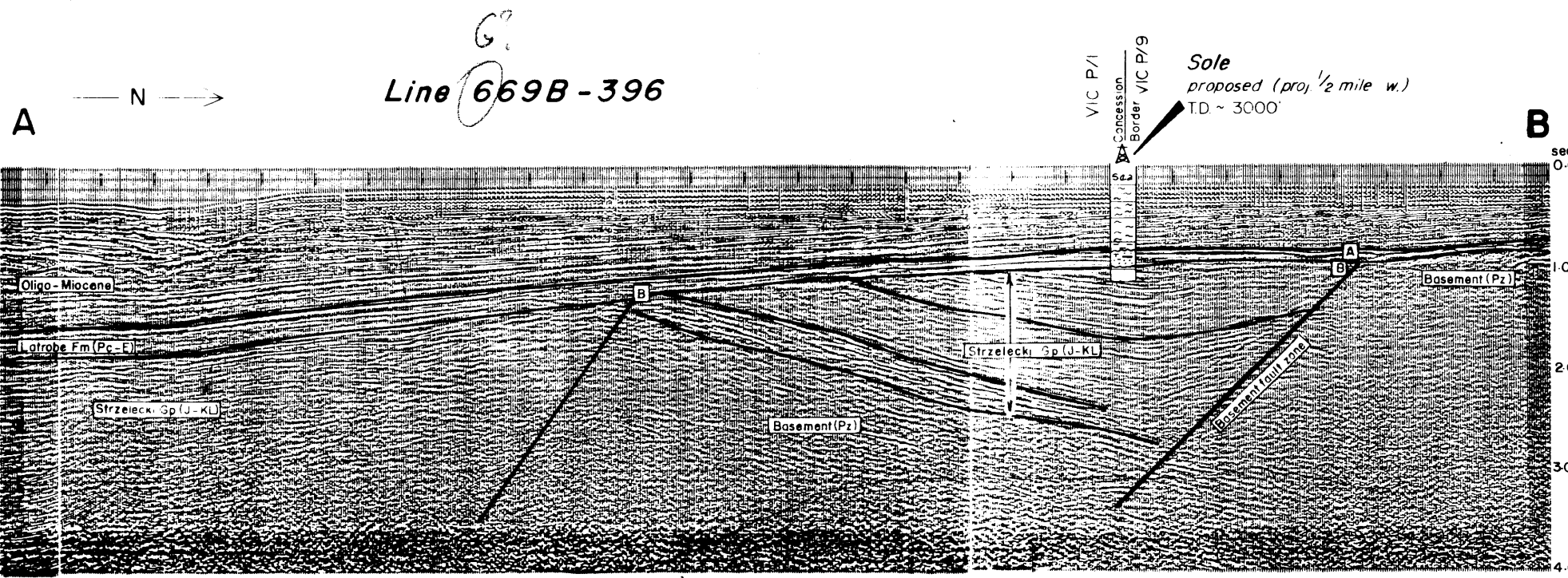
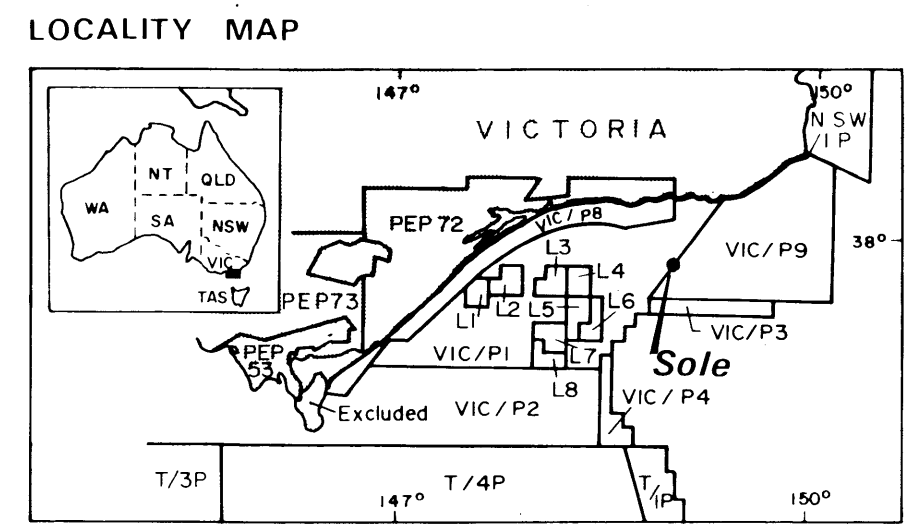


17111



**SOLE
PREDICTED SECTION**

FORMATION (AGE)	LITHOLOGY	FM. TOPS & DEPTHS
	SEA WATER	429' Sea bed
TERTIARY MIOCENE	Gippsland limestone Fm (Miocene)	
O.I.	Lakes Entrance Fm (Oligocene)	~2200'
Pz - E	Lalrope Fm (Paleocene - Eocene)	2500' 'A' Horizon
KL	Strzelecki group (KL)	2950' 'B' Horizon
		TD ~ 3000'



Lands Department.

DEPT. NAT. RES & ENV
PE905087

SHELL DEVELOPMENT (AUSTRALIA) PTY. LTD.
GIPPSLAND BASIN OFFSHORE
**SOLE
PROSPECT SHEET**

Date: 31st March 1972
Drawing No. 5687