

SHELL DEVELOPMENT (AUSTRALIA) PTY. LTD.

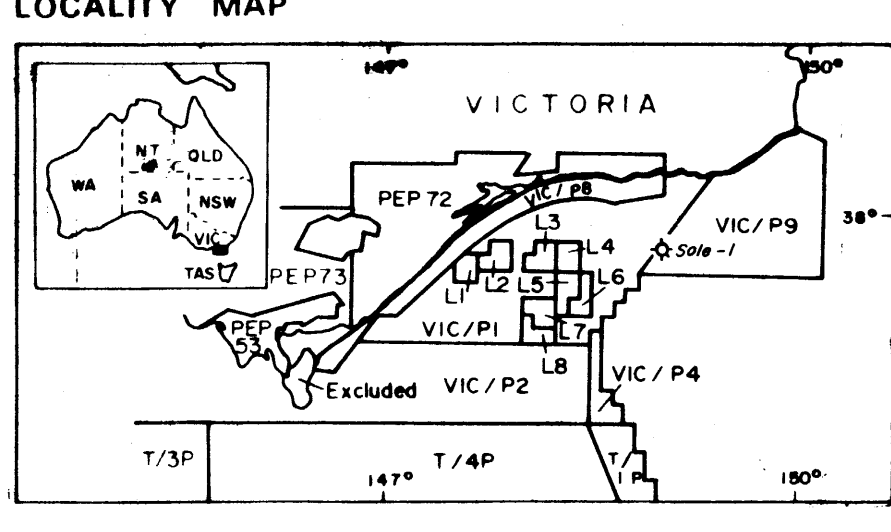
OFFSHORE GIPPSLAND BASIN - VIC/P9

EXPLORATION WELL

SOLE - I



LOCALITY MAP

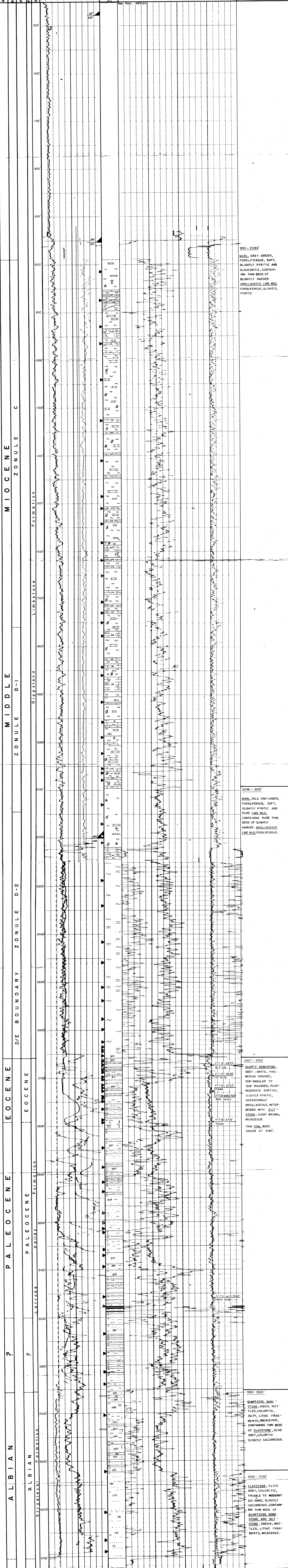


Auth: S.D.A.	Date: April 1973
Report: S.D.A. 192	Encl: 1 Drawing No. 7002
Lat: 38° 07' 01" S	LONG: 149° 02' 04" E
ELEV RT: 30 ft	SUDDEN: 28/1/73
WATER DEPTH: 423'	COMPLETED: 9/2/73
TOTAL DEPTH: 3703'	STATUS: P & A

LEGEND

<p>LITHOLOGY</p> <p>Sandstone, strongy cemented</p> <p>Siltstone</p> <p>Clay</p> <p>Limestone</p> <p>Dolomitic limestone</p> <p>Dolomite</p> <p>Shale</p> <p>Chert</p> <p>Coal</p>		<p>Very sandy</p> <p>Sandy</p> <p>Slightly sandy</p> <p>Sand streak</p> <p>Silty</p> <p>Clay streak</p> <p>Clay</p> <p>Caliche</p> <p>Limestone streak</p> <p>Dolomitic streak</p> <p>Marly</p> <p>Carbonaceous</p> <p>Argillaceous</p> <p>Gypsiferous</p> <p>Cherty</p>	<p>FOSSILS</p> <p>Fossil fragments</p> <p>Bryozoa</p> <p>Pelletoid</p> <p>Microbioclastic hash</p> <p>MINERALS</p> <p>Glc</p> <p>Pyr</p> <p>Chi</p> <p>CARBONATES</p> <p>g</p> <p>p</p> <p>x</p> <p>ch</p> <p>crs</p>	<p>WELL SYMBOLS</p> <p>133</p> <p>Side wall sample recovered</p> <p>Side wall sample lost or empty</p>
<p>QUANTITATIVE SYMBOLS</p> <p>(Glc) Rare</p> <p>(Glc) Common</p> <p>(Glc) Rcp</p> <p>(Glc) Abundant</p>				

AGE	STRATIGRAPHY	GAMMA RAY AMI UNITS	LITHOLOGY	BULK DENSITY GRAMS PER CC	LITHOLOGICAL DESCRIPTION
		0 150		1.85 2.35	
				CORRECTION - GRAMS PER CC .25 0	



990 - 2096'
MARL, GREY-GREEN, FOSSILIFEROUS, SOFT, SLIGHTLY PYRITIC AND GLAUCONITIC, CONTAINING THIN BEDS OF SLIGHTLY HARDER ARGILLACEOUS LIME MUD, FOSSILIFEROUS, SLIGHTLY PYRITIC.

2096 - 2657'
MARL, PALE GREY-GREEN, FOSSILIFEROUS, SOFT, SLIGHTLY PYRITIC AND PURE LIME MUD, CONTAINING RARE THIN BEDS OF SLIGHTLY HARDER ARGILLACEOUS LIME MUD, FOSSILIFEROUS.

2657 - 3355'
QUARTZ SANDSTONE, GREY-WHITE, FINE-MEDIUM GRAINED, SUB-ANGULAR TO SUB-ROUNDED, POOR-MODERATE SORTING, SLIGHTLY PYRITIC, OCCASIONALLY ARGILLACEOUS, INTERBEDDED WITH SILTSTONE, DUSKY BROWN, MICACEOUS. THIN COAL BEDS OCCUR AT 3180'.

3355 - 3522'
QUARTZOSE SANDSTONE, GREEN, MOTTLED, CHLORITIC, SILTY, LITHIC FRAGMENTS, MICACEOUS, CONTAINING THIN BEDS OF CLAYSTONE, OLIVE GREY, CHLORITIC, SLIGHTLY CALCAREOUS.

3522 - 3703'
CLAYSTONE, OLIVE GREY, CHLORITIC, FRIABLE TO MODERATELY HARD, SLIGHTLY CALCAREOUS, CONTAINING THIN BEDS OF QUARTZOSE SANDSTONE AND SILTSTONE, GREEN, MOTTLED, LITHIC FRAGMENTS, MICACEOUS.