

SNAPPER-6
(METRES KB)
T.D. 3000mSS
KB=21m

SNAPPER-5
(METRES KB)
T.D. 2990mSS
KB=21m

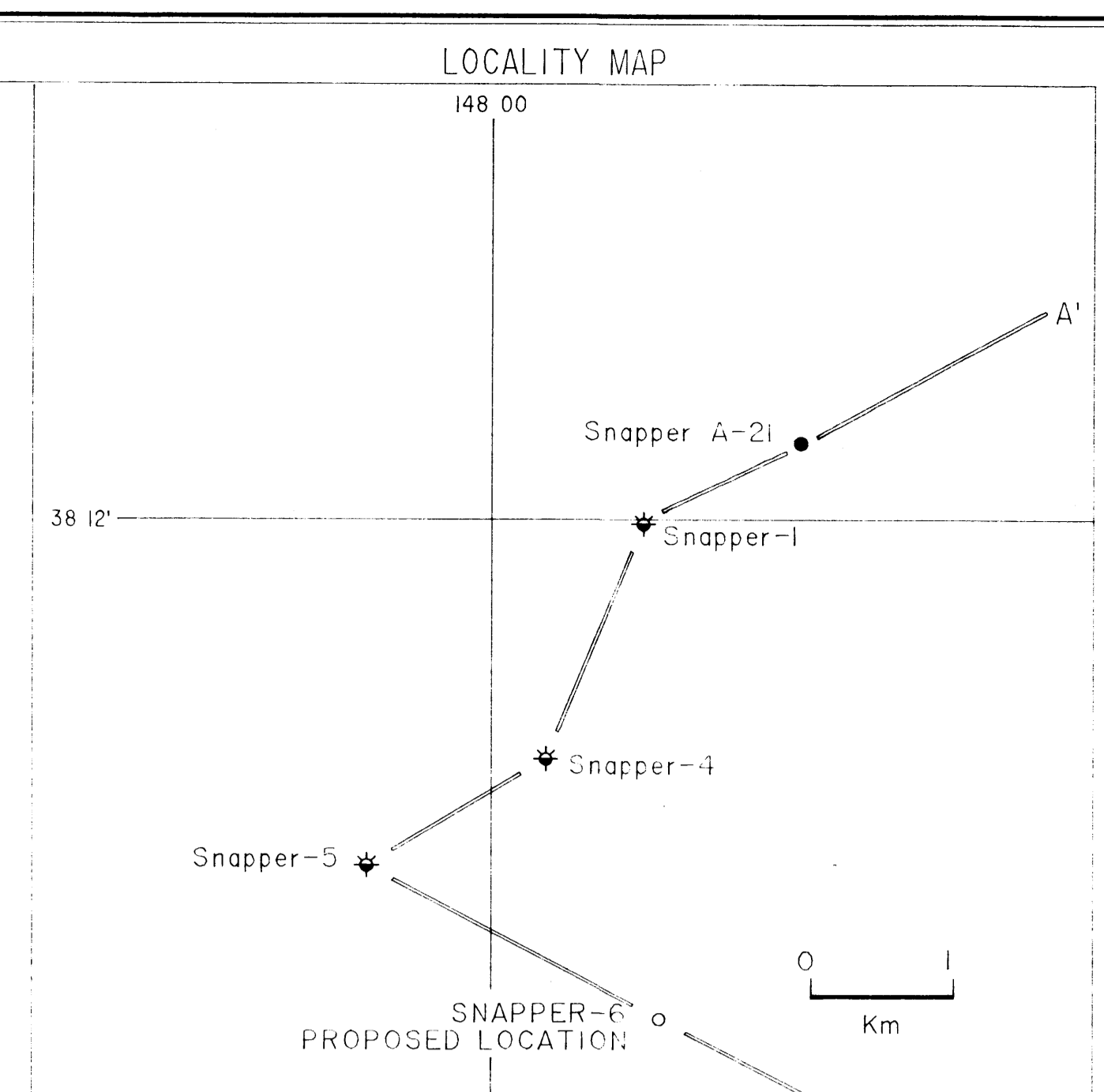
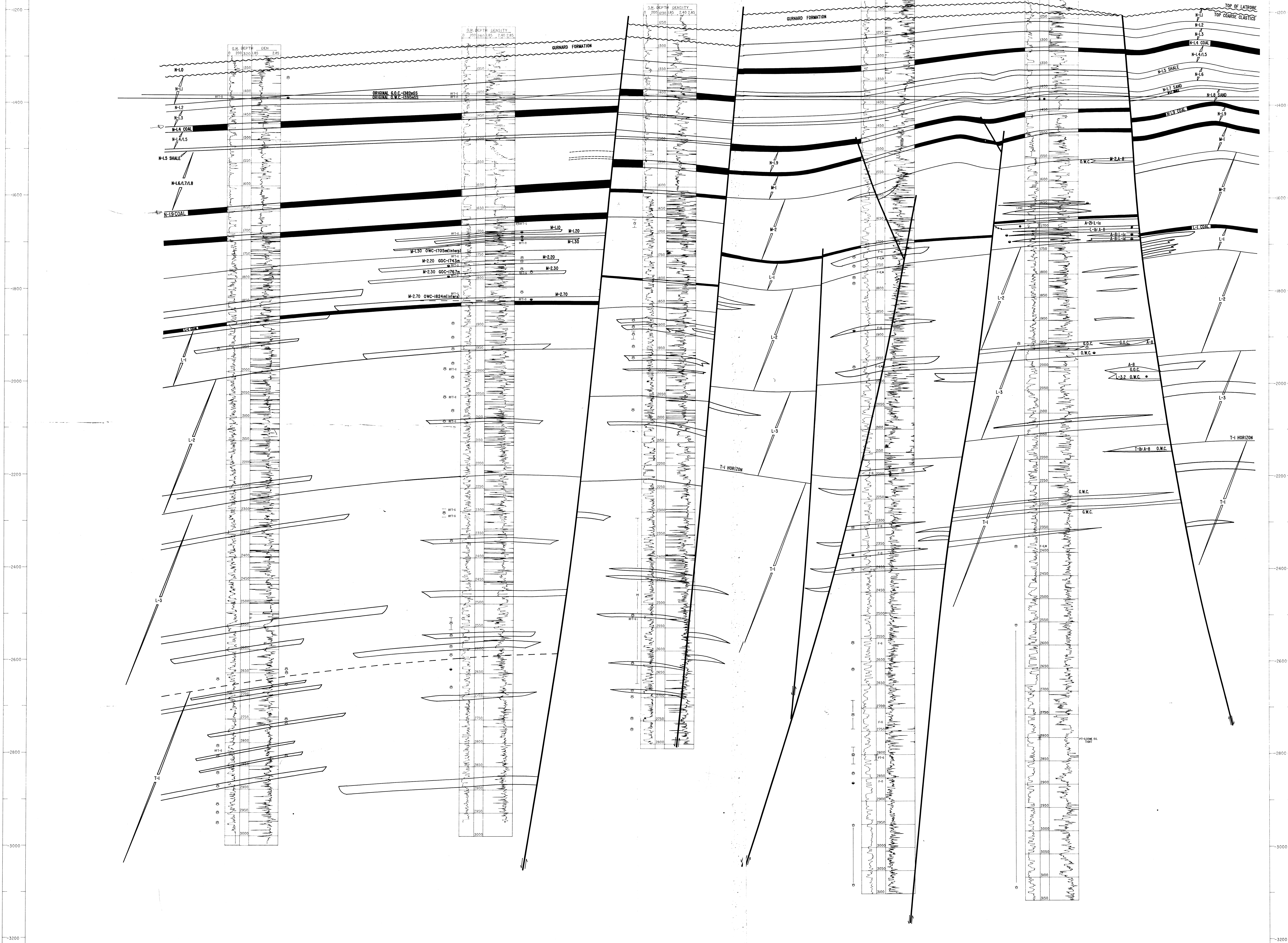
SNAPPER-4
(METRES KB)
T.D. 2800mSS
KB=21m

SNAPPER-1
(METRES SS)
T.D. 3725mSS
KB=9.4m

SNAPPER A-21
(METRES KB)
T.D. 3253mSS
KB=34.7m

A
WEST
ELEVATION
(METRES)

A'
EAST
ELEVATION
(METRES)



- OIL PRODUCER
- ABANDONED OIL PRODUCER
- INTERPRETED OIL PRODUCTIVE
- INTERPRETED GAS PRODUCTIVE
- ⊗ GAS SHOW
- ⊗ GAS PRODUCTION
- RFT-G RFT-GAS RECOVERY
- RFT-O RFT-OIL RECOVERY
- F-G FIT-GAS RECOVERY
- F-O FIT-OIL RECOVERY
- F-W FIT-WATER RECOVERY
- PT-G PRODUCTION TEST-GAS
- ≡ PERFORATIONS
- LPHC LOW PROVED HYDROCARBONS

NOTE: M, L and T oil sands in A-21 block based on A-B intersections projected to the plane of this section

REF: 100 000000
P5602350

ESSO EXPLORATION AND PRODUCTION AUSTRALIA INC.
GIPPSLAND BASIN
VICTORIA
SNAPPER FIELD

SCHEMATIC STRUCTURAL CROSS SECTION

CONTOUR INTERVAL: DATUM SEA LEVEL

HORIZONTAL SCALE 1:10,000
VERTICAL SCALE 1:2,000

AUTHOR: G. H. ROGER DRAFTED BY: C. J. BATTY
TO ACCOMPANY: SNAPPER 6 WELL COMPLETION REPORT DATE: AUGUST 1984
SHEET ENCLOSURE

From W.C.R. Snapper 6, p. 2

DWS 2343/09/3