

SEISMIC CALIBRATION LOG

(Adjusted Continuous Velocity Log)



Company: ESSO AUSTRALIA LTD.

Well: SMILER-1

Field: WILDCAT

Country: AUSTRALIA

Reference No: SYJ581131/561132 Interval: 2614.00 to 162.00

Date Logged: 13-JULY-1995 Date Processed: 21-JULY-1995

Location: 038 28 55.18' S 148 23 17.09' E

Elevations: KB: 26.00 DF: 24.70 GL: -122.00

Permanent Datum: MSL Depth Units: METRES

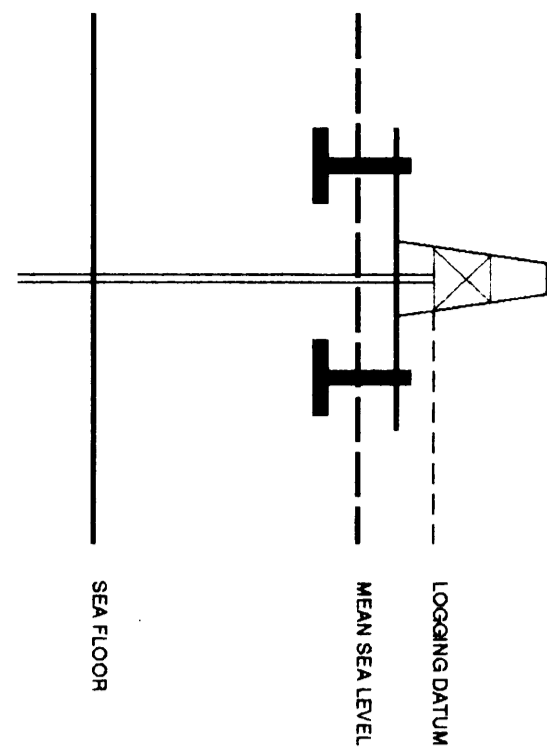
FIELD RECORDING Engineer: RICHARDSON'S TECHNOLOGICAL VEA Program Version: 703-427

COMPUTATION Analyst: A WILSON QC: SYJ Baseline: 205

ELEVATION ABOVE MEAN SEA LEVEL

Logging Datum: 26.00

Seismic Reference Datum: 0.00



Total Number of Levels: 29

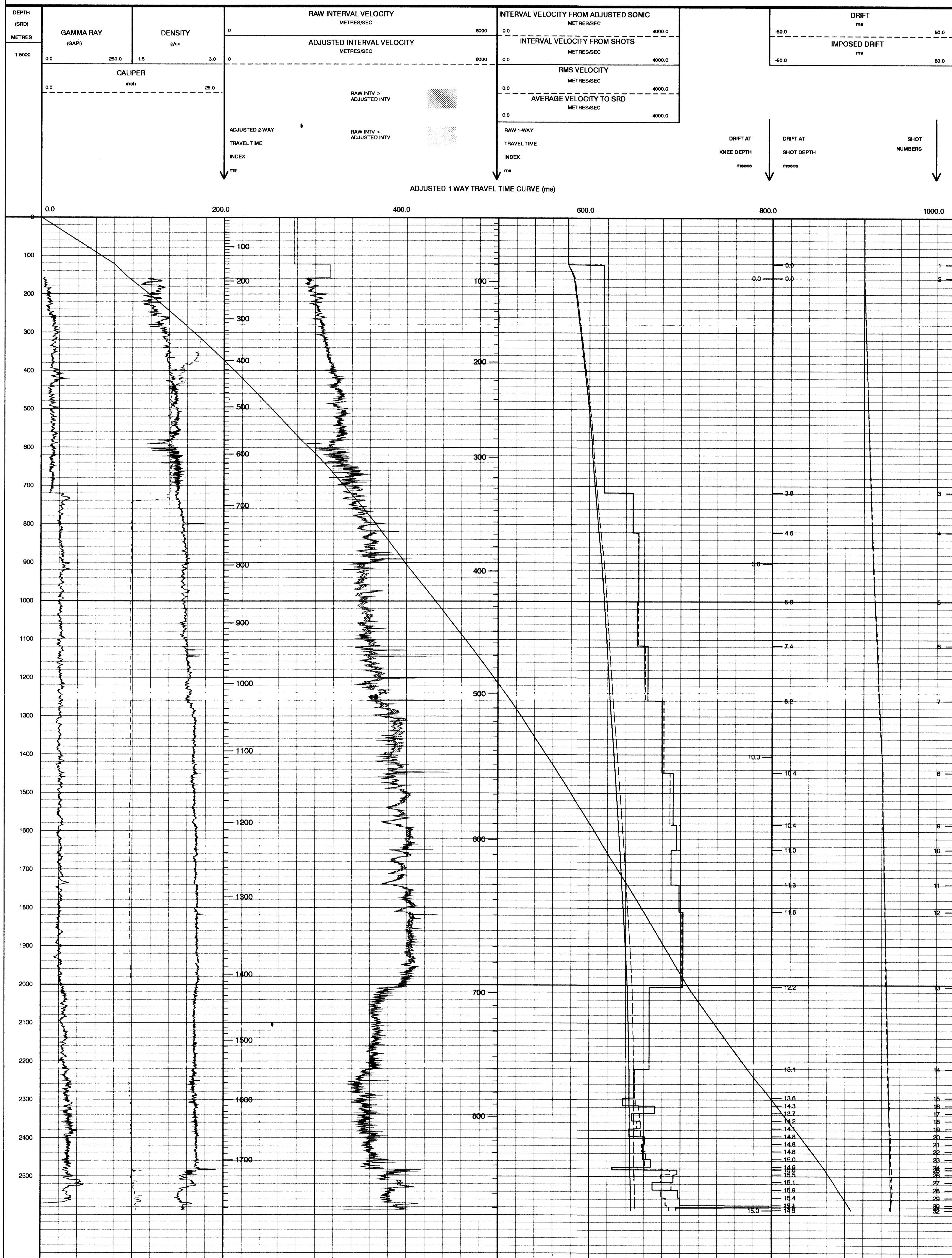
Depth Reference: SRD

Time Reference: SRD

Run	QRM	Tool Type	Bit Size	Depth	Casing Size	Depth	Top Depth	Bottom Depth
ONE	04-07-1995	AS-LDL	17.5 IN	17.5 IN		170 M	170 M	377 M
TWO	12-07-1995	DL-LDL-AS		12.28 IN		746 M	746 M	2065 M
THREE	13-07-1995	50 M	Hydro	5.0 M BELOW MSL		10.0 M BELOW MSL	96 DEG	96 DEG

The well name, location and borehole reference data were furnished by the customer.

All interpretations are opinions based on inferences from electrical or other measurements and we cannot, and do not guarantee the accuracy or correctness of any interpretations, and we shall not, except in the case of gross or willful negligence on our part, be liable or responsible for any loss, costs, damages or expenses incurred or sustained by anyone resulting from any interpretations made by any of our officers, agents or employees. These interpretations are also subject to Clause 4 of our General Terms and Conditions as set out in our current Price Schedule.



COMPANY ESSO AUSTRALIA LTD.
 FIELD WILDCAT
 WELL SMILER-1
 COUNTRY AUSTRALIA