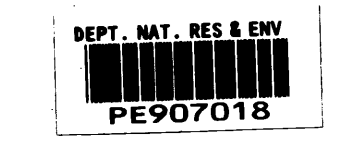


SEISMOGRAPH SERVICE LIMITED

COMPANY : PHILLIPS AUSTRALIAN OIL CO.
 WELL : SELENE NO. 1
 LOCATION : 38° 37' 24.97"S
 : 148° 26' 11.51"E



DISPLAY : VSP UPGOING EVENTS
 POLARITY 1

TIME SCALE : 1S = 10CMS
 DEPTH SCALE : 10 TRACES/INCH
 DATE PROCESSED : FEBRUARY 1983

FIELD ACQUISITION

DATE SHOT : 6.2.83
 SOURCE : SINGLE BOLT AIRGUN(120CU. IN)
 SOURCE DEPTH : 4.5M BELOW MSL
 GUN PRESSURE : 2000PSI
 SOURCE MONITOR : NEAR FIELD HYDROPHONE
 MONITOR DEPTH : 7.5M BELOW MSL
 WELL GEOPHONE : GCH 100HT
 RECORDING EQUIPMENT : DWS
 SAMPLE RATE : 1MS
 SURFACE ELEVATION : /
 WATER DEPTH : 253M
 VSP DATUM : MSL
 DEPTH REFERENCE LEVEL : KB, 23M AMSL

PROCESSING SEQUENCE

U1. EDIT
 AUTOMATED TRACE ALIGNMENT
 VERTICAL STACK OF CONSTANT DEPTH TRACES
 SOURCE SIGNATURE DECONVOLUTION(310MS DERIVATION)
 AMPLITUDE RECOVERY T*x1.0
 FIRST ARRIVALS SHIFTED TO TWO-WAY TIME SUB DATUM
 BANDPASS FILTER(1-5, 70-88HZ)
 U2. AS FOR U1 PLUS
 DOWNGOING WAVE SUBTRACTION PRIOR TO BANDPASS FILTER
 U3. AS FOR U2 PLUS
 9:1 MEDIAN PICK
 BANDPASS FILTER(1-5, 70-88HZ)
 U4. AS FOR U3 EXCEPT
 BANDPASS FILTER BEFORE AND AFTER MEDIAN PICK REPLACED BY
 TIME VARIANT FILTER FROM SEISMIC SECTION (LINE GP81-91)
 (1-1S, 55-69HZ 0.00-1.53S
 8-10, 50-62HZ AT 1.83S
 1-5, 45-56HZ AT 2.13S
 1-5, 40-50HZ 2.23S TO END OF DATA)
 U1-U4. TRACE EQUALISATION (500MS WINDOW, 250MS OVERLAP)
 PRIOR TO DISPLAY

POLARITY : :
 AN UPGOING COMPRESSION WAVE IS REPRESENTED BY A WHITE TROUGH
 THE DOWNGOING FIRST ARRIVAL COMPRESSION WAVE IS A BLACK PEAK

U1

U2

U3

U4

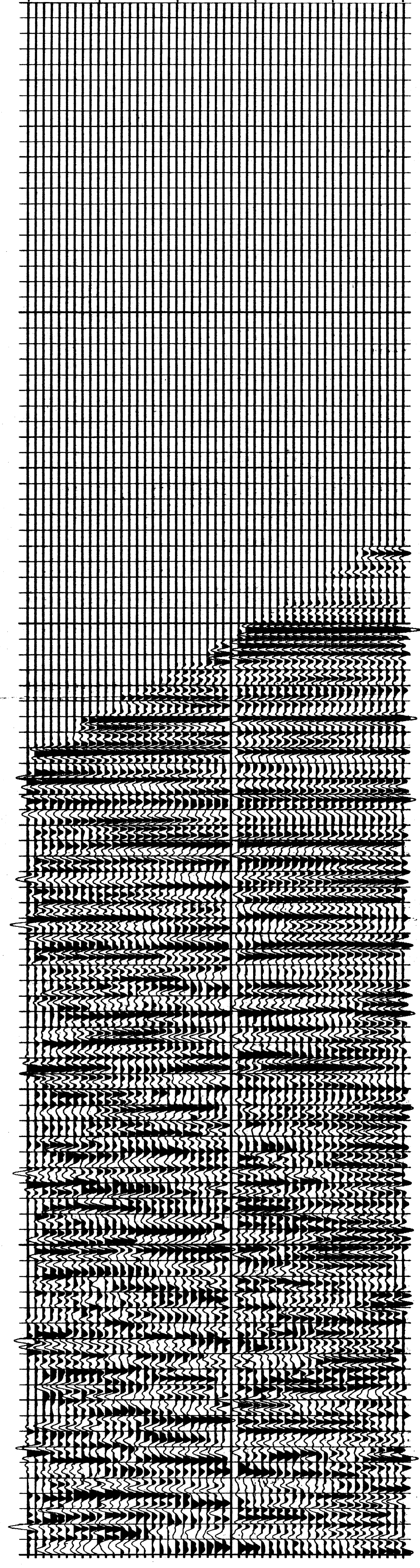
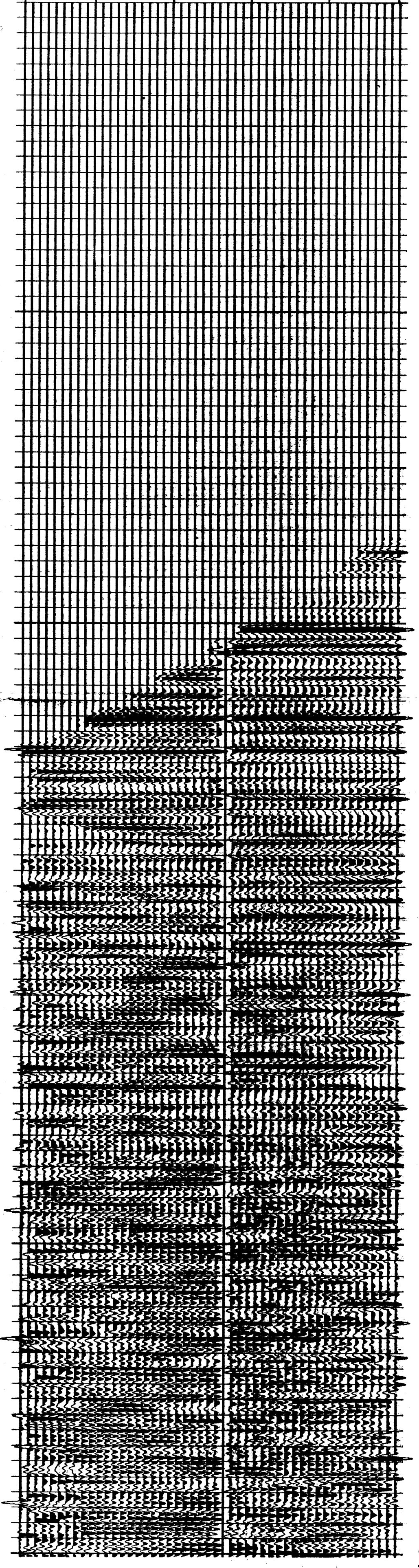
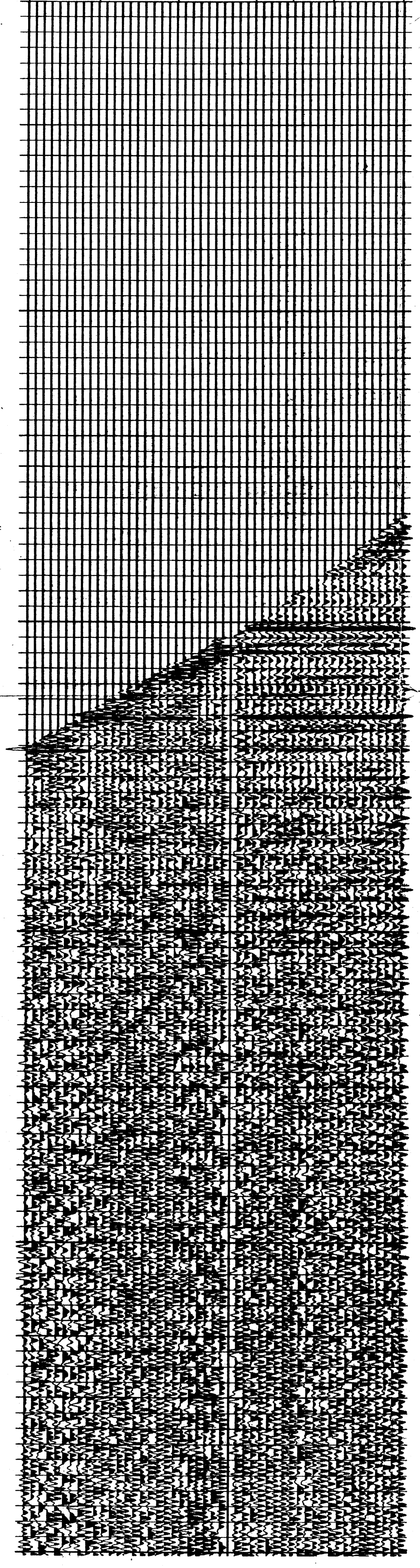
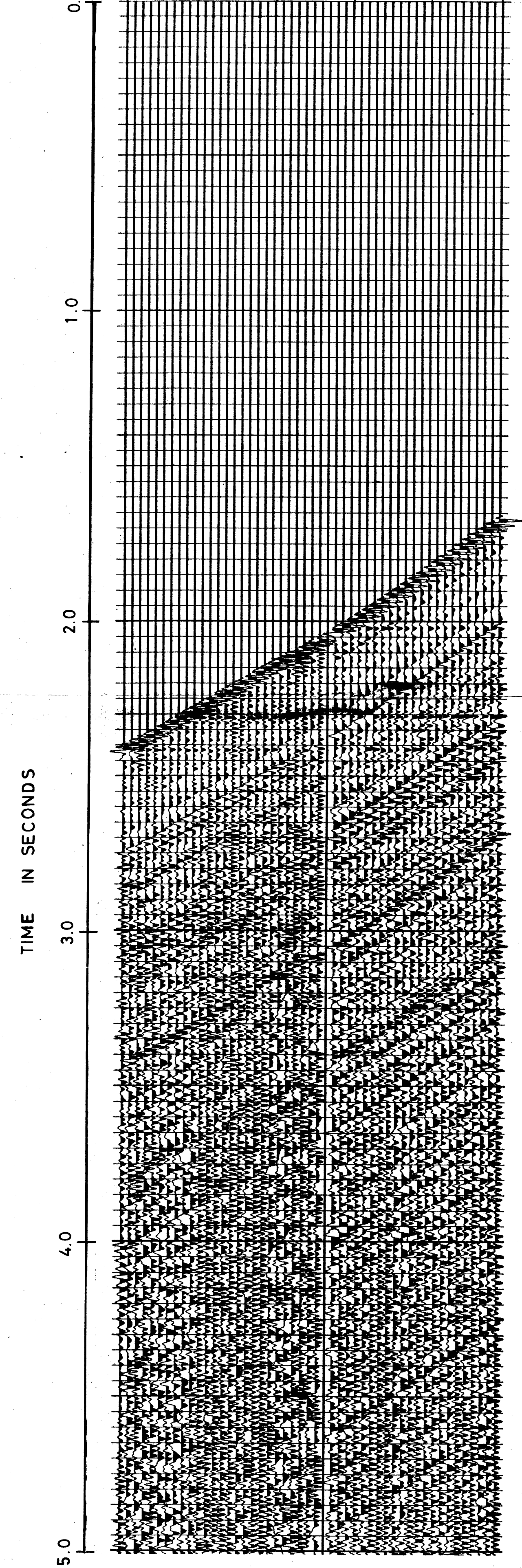
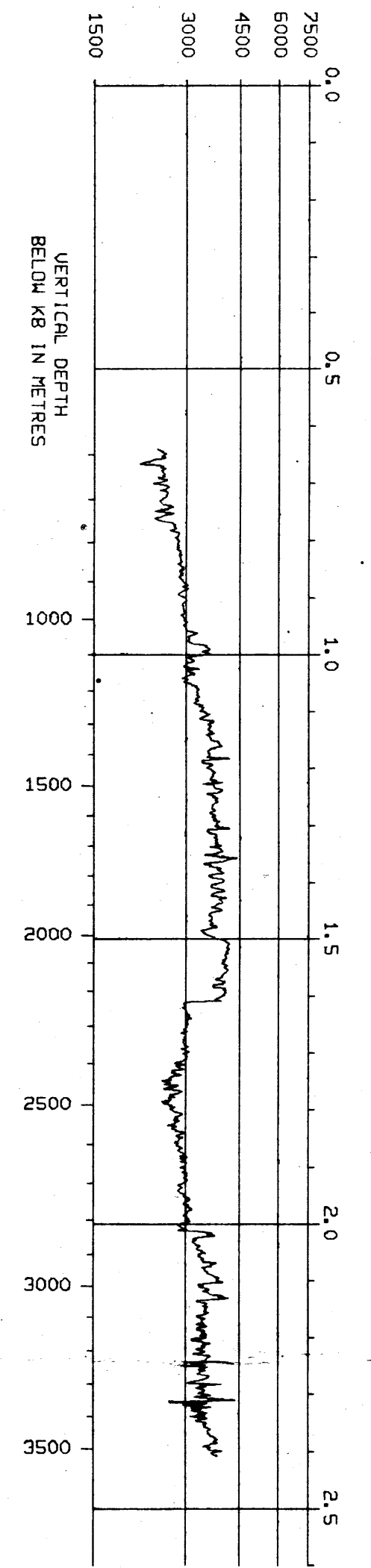
LEVEL NO.
 DEPTH IN M.
 BELOW KB

1 10 20 30 40 49
 3535 3310 3060 2810 2560 2335

1 10 20 30 40 49
 3535 3310 3060 2810 2560 2335

1 10 20 30 40 49
 3535 3310 3060 2810 2560 2335

LOG₁₀ VELOCITY
 SCALE
 VELOCITY IN M/S



TIME IN SECONDS