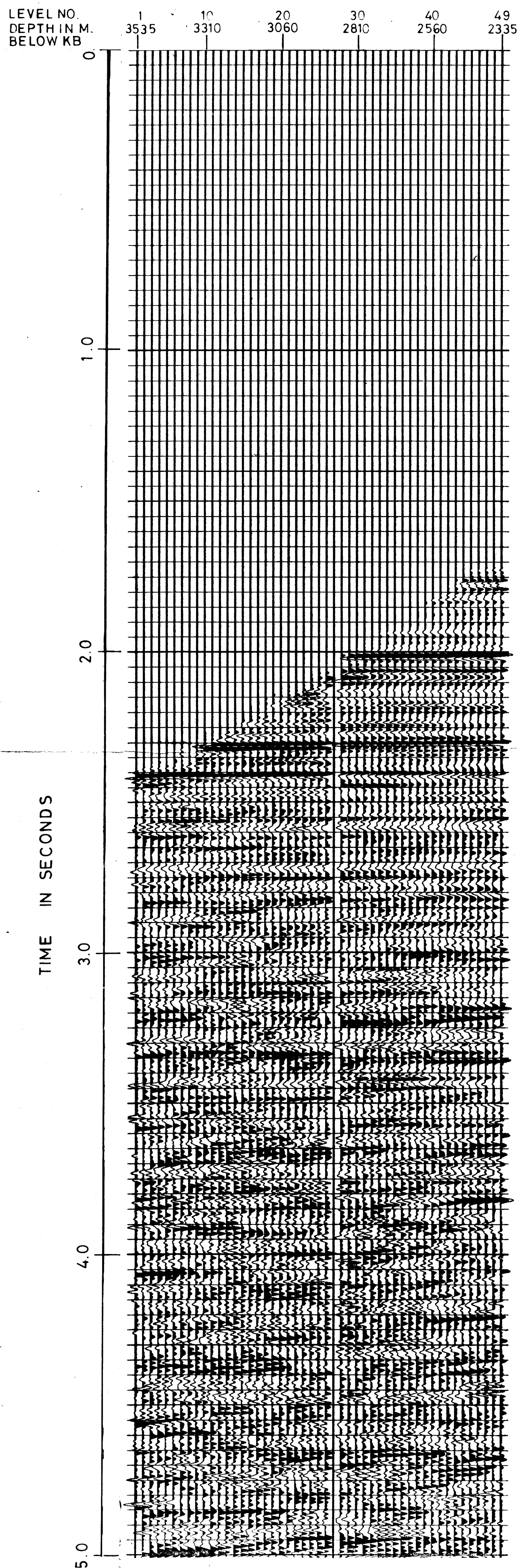
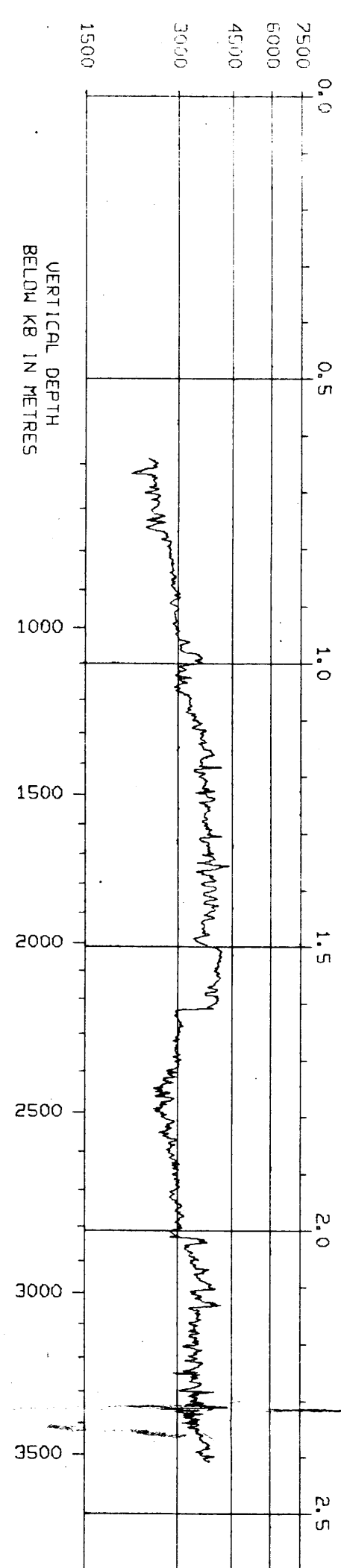


S4

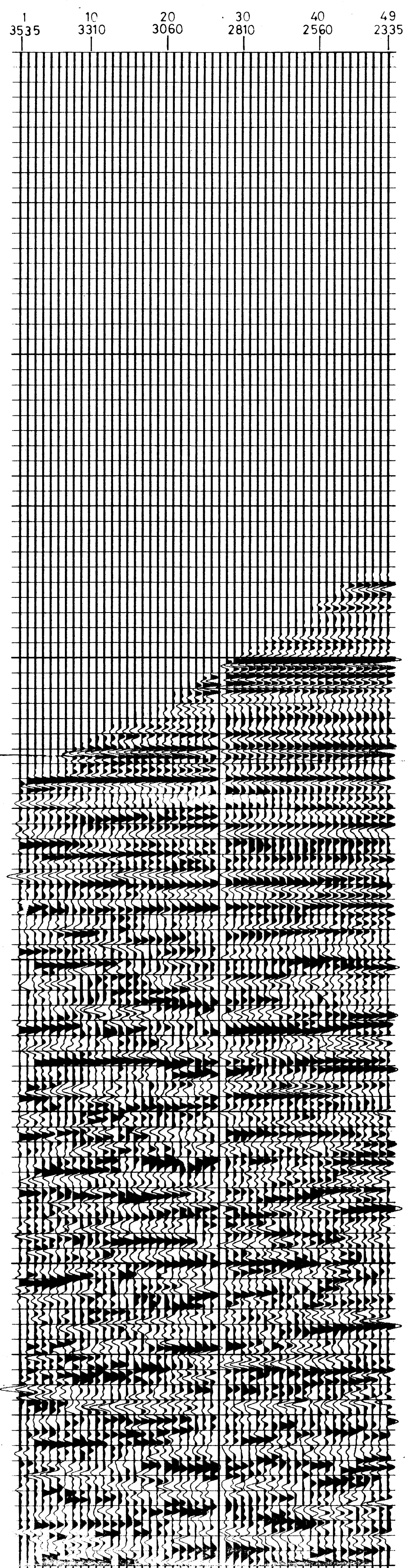
LOG₁₀ VELOCITY

SCALE

VELOCITY IN M/S



S5



SEISMOGRAPH SERVICE LIMITED

OIL and GAS DIVISION 25 FEB 1983

COMPANY : PHILLIPS AUSTRALIAN OIL CO.
 WELL : SELENE NO. 1
 LOCATION : 38° 37' 24.975"
 : 148 26 11.51E



DISPLAY : VSP UPGOING EVENTS
 SPECIAL VSP DECONVOLUTION
 PLUS TRACKING FILTER

POLARITY 2

TIME SCALE : 15 = 10CMS
 DEPTH SCALE : 10 TRACES/INCH
 DATE PROCESSED : FEBRUARY 1983

FIELD ACQUISITION

DATE SHOT : 6.2.83
 SOURCE : SINGLE BOLT AIRGUN (120CU. IN)
 SOURCE DEPTH : 4.5M BELOW MSL
 GUN PRESSURE : 2000PSI
 SOURCE MONITOR : NEAR FIELD HYDROPHONE
 MONITOR DEPTH : 7.5M BELOW MSL
 WELL GEOPHONE : GCH 100HT
 RECORDING EQUIPMENT : DWS
 SAMPLE RATE : 1MS
 SURFACE ELEVATION : /
 WATER DEPTH : 253M
 VSP DATUM : MSL
 DEPTH REFERENCE LEVEL : KB, 23M AMSL

PROCESSING SEQUENCE

S4. EDIT
 AUTOMATED TRACE ALIGNMENT
 VERTICAL STACK OF CONSTANT DEPTH TRACES
 SOURCE SIGNATURE DECONVOLUTION (310MS DERIVATION)
 AMPLITUDE RECOVERY $\times 1.0$
 FIRST ARRIVALS SHIFTED TO TWO-WAY TIME SUB DATUM
 DOWNGOING WAVE SUBTRACTION
 SPECIAL VSP DECONVOLUTION (1050MS DERIVATION WINDOW)
 BANDPASS FILTER (1-5, 70-88HZ)
 TRACKING FILTER (9:1 MEDIAN PICK, 0-4MS/TR LEFT DIP ENHANCEMENT)
 BANDPASS FILTER (1-5, 70-88HZ)

S5. AS FOR S4 EXCEPT
 BANDPASS FILTER BEFORE AND AFTER TRACKING FILTER REPLACED BY
 TIME VARIANT FILTER FROM SEISMIC SECTION (LINE GP81-91)
 (11-15, 55-69HZ 0.00-1.535
 8-10, 50-62HZ AT 1.835
 1-5, 45-56HZ AT 2.135
 1-5, 40-50HZ 2.735 TO END OF DATA)

S4-S5. TRACE EQUALISATION (500 MS WINDOW, 250 MS OVERLAP)
 PRIOR TO DISPLAY

POLARITY 2 :
 AN UPGOING COMPRESSION WAVE IS REPRESENTED BY A BLACK PEAK
 THE DOWNGOING FIRST ARRIVAL COMPRESSION WAVE IS A WHITE TROUGH