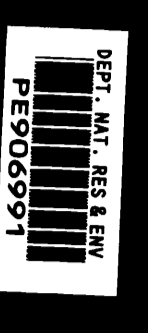


Schlumberger
 SYDNEY LOG INTERPRETATION CENTRE



GEOGRAM*

(Synthetic Seismogram)

Company: LASMO ENERGY AUSTRALIA LTD
 Well: PATRICIA - 1
 Field: PATRICIA
 Country: AUSTRALIA
 Reference No: 570705 Interval: 445.00 to 895.00
 Date Logged: 04/07/87 Date Processed: 06/07/87
 Location: 039° 01' 53.23" S 148° 26' 48.82" E
 Elevations: KB: 22.0 M DE: 217 M GL: -51.0 M
 Permanent Datum: MSL Depth Units: METRES

LOG INFORMATION

FIELD RECORDING: Engineer: K. MULLEN Location: VEA Program Version: 28.485
 COMPUTATION: Analyst: M. SANDERS Curve: SVJ Baseline: 18K4/28K4
 Logging Datum: ELEVATION ABOVE MEAN SEA LEVEL
 Seismic Reference Datum: 22 M MSL
 Ground Level: -51 M
 Sonic Calibration By Check Shots: YES Sonic Edited By Analyst: YES
 Two-Way Time Sample Interval: 2 ms Environment: offshore

True Vertical Depth Corrections Applied:
 Source of True Vertical Depth Data:
 Maximum Hole Deviation:

| Run | Date | Tool Type | RI Size/Depth | Casing Size/Depth | Top Depth | Bottom Depth | |
|---------|----------|------------|-----------------|-------------------|-----------------------|--------------|---------------|
| 1 | 28/06/87 | BHC | 17 1/2" @ 847 M | 20" @ 218 M | 218 | 642 | |
| 2 | 03/07/87 | SLS | 12 1/4" @ 898 M | 13 9/8" @ 451 M | 451 M | 898 M | |
| VSF Run | Date | Gas Offset | Hydro Offset | Gas Elevation | Hydrocarbon Elevation | Gas Azimuth | Hydro Azimuth |
| 1 | 04/07/87 | 80 M | 80 M | 5 M below MSL | 10 M below MSL | 245 ° | 245 ° |

GEOGRAM MODEL ASSUMPTIONS

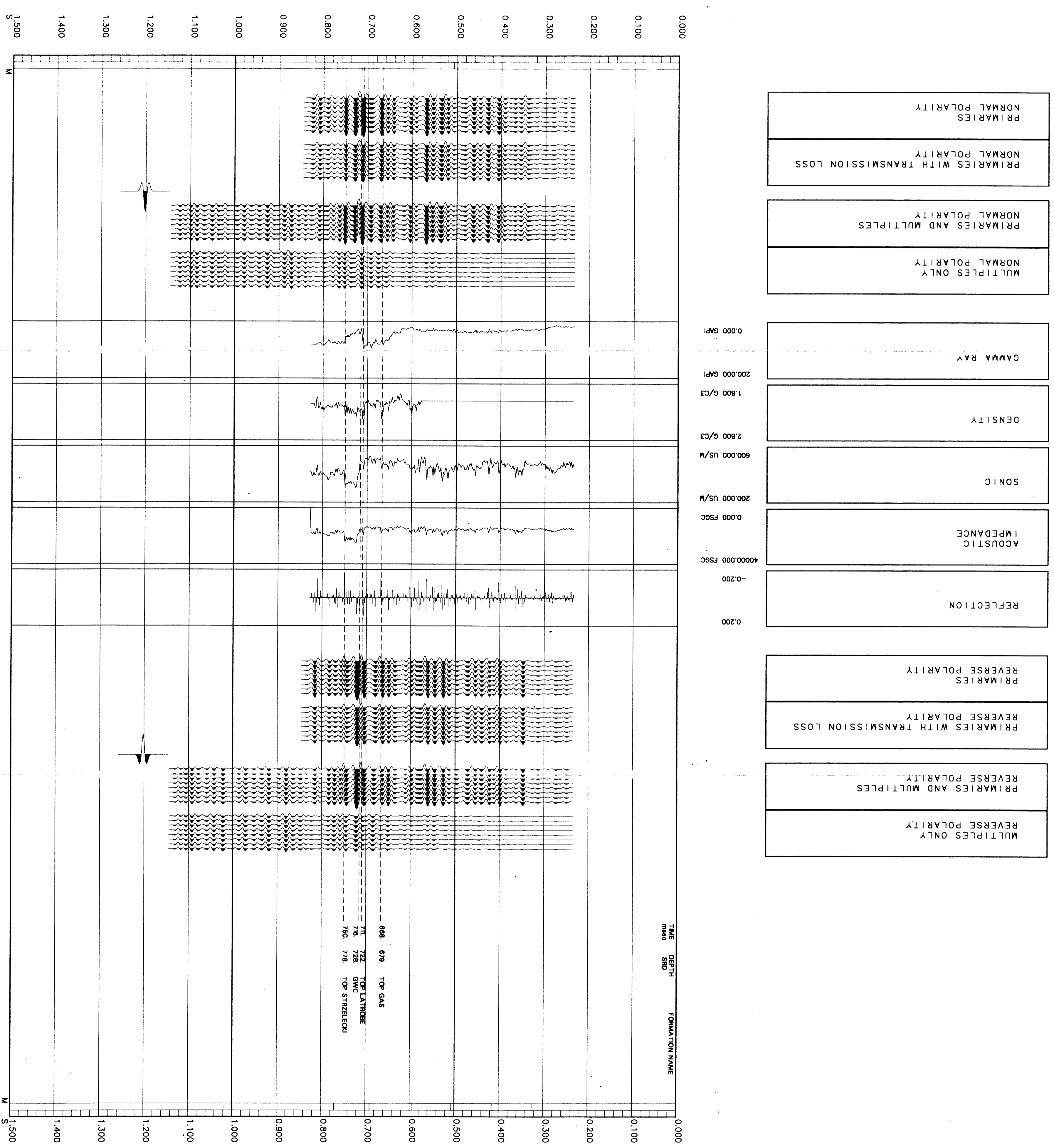
Equal time slice model of horizontal plane layers.
 Plane acoustic waves at normal incidence.
 No intrinsic attenuation.
POLARITY
 An upgoing wave, reflected by an increase in acoustic impedance with depth, is displayed as a white trough under normal polarity.
SIGNATURES
 All signatures displayed in the Geogram results correspond to a wavelet convolved with a reflection coefficient of -0.5 (A decrease in acoustic impedance with depth).

5 0 H Z

The well name, location and borehole reference data were furnished by the customer.

All interpretations are opinions based on inferences from electrical or other measurements and we cannot, and do not guarantee the accuracy or correctness of any interpretations, and we shall not, except in the case of gross or willful negligence on our part, be liable or responsible for any loss, costs, damages or expenses incurred or sustained by anyone resulting from any interpretations made by any of our officers, agents or employees. These interpretations are also subject to Clause 4 of our General Terms and Conditions as set out in our current Price Schedule.

** GEOGRAM **
 50 HERTZ ZERO PHASE
 RICKE WAVELET
 PATRICIA - 1



| | | | | | | | | | | | | |
|-----------|----------------------------------|-------------------------|----------------|-----------|---------|-------|--------------------|------------|-----------|----------------------------------|-------------------------|----------------|
| PRIMARIES | PRIMARIES WITH TRANSMISSION LOSS | PRIMARIES AND MULTIPLES | MULTIPLES ONLY | GAMMA RAY | DENSITY | SONIC | ACOUSTIC IMPEDANCE | REFLECTION | PRIMARIES | PRIMARIES WITH TRANSMISSION LOSS | PRIMARIES AND MULTIPLES | MULTIPLES ONLY |
|-----------|----------------------------------|-------------------------|----------------|-----------|---------|-------|--------------------|------------|-----------|----------------------------------|-------------------------|----------------|

COMPANY LASMO ENERGY AUSTRALIA LTD
 FIELD PATRICIA
 WELL PATRICIA - 1
 COUNTRY AUSTRALIA

