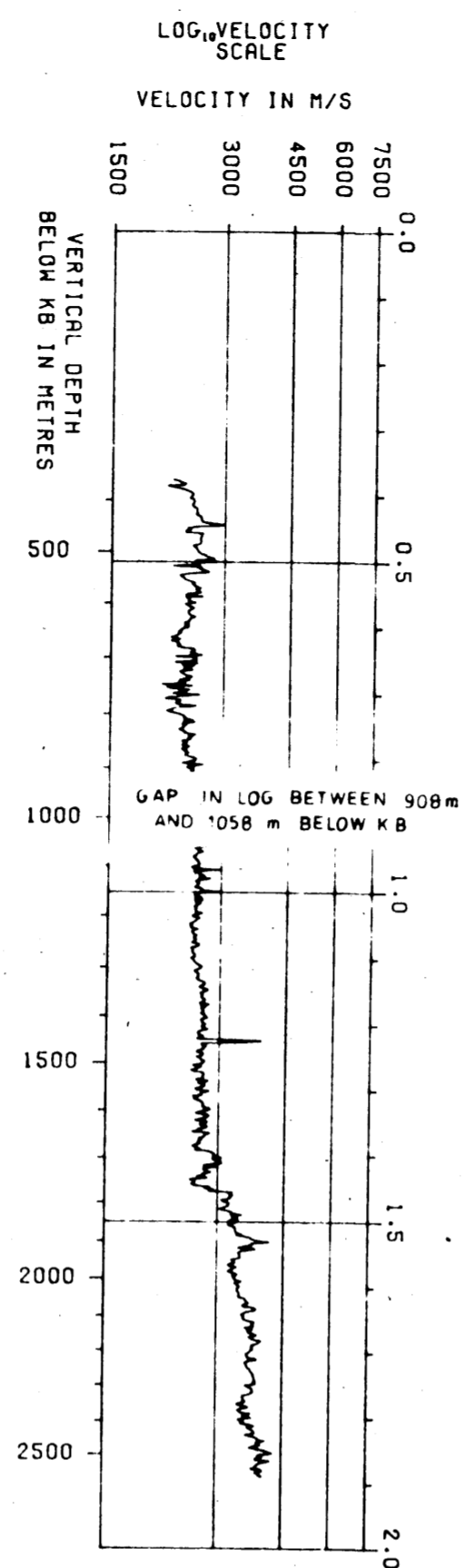
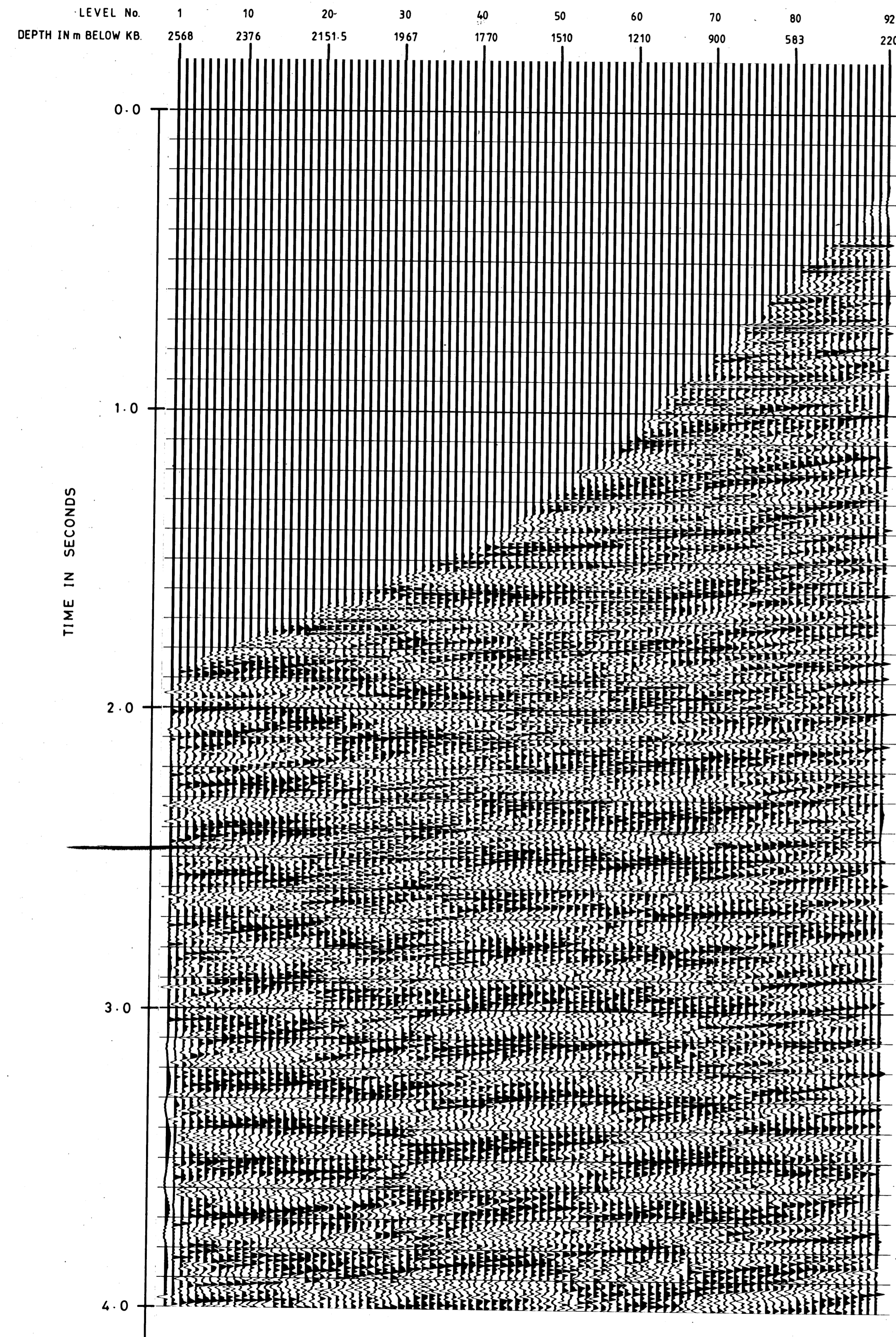
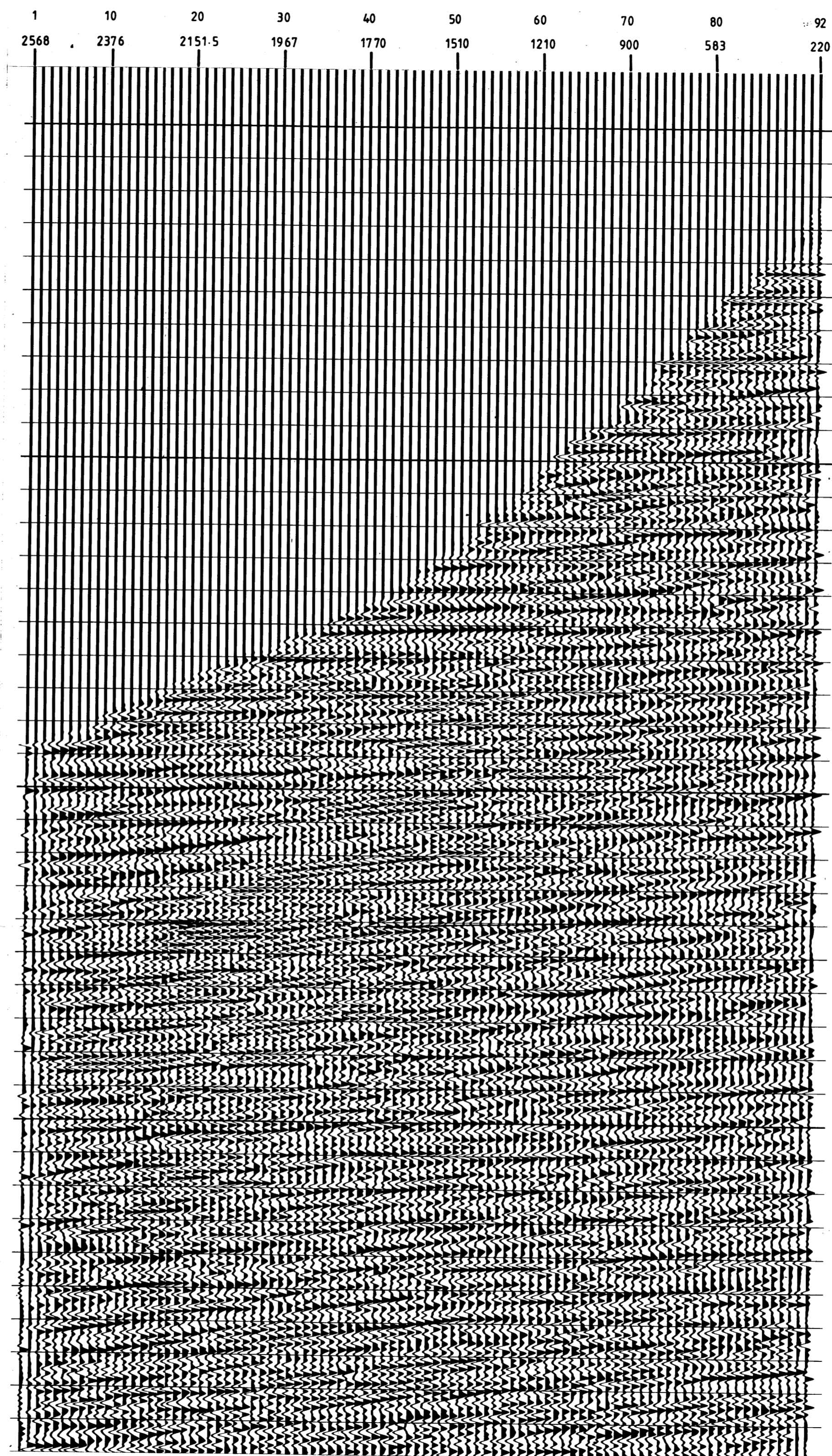


S4



S5



SEISMOGRAPH SERVICE (ENGLAND) LTD.

COMPANY : UNION TEXAS AUSTRALIA INC.  
 WELL : PISCES NO. 1  
 LOCATION : 39° 03' 37.055" S  
 148° 30' 41.270" E  
 DISPLAY : VSP UPGOING EVENTS  
 SPECIAL VSP DECONVOLUTION  
 PLUS TRACKING FILTER  
 (POLARITY 2)

TIME SCALE : 1 S = 3.75 IN  
 DEPTH SCALE : 10 TRACES/INCH  
 DATE PROCESSED : AUGUST 1982

## FIELD ACQUISITION

SURVEY DATE : 9TH MAY 1982  
 SOURCE : 40 CU. IN SINGLE BOLT AIRGUN  
 SOURCE DEPTH : 15.2 M  
 GUN PRESSURE : 2000 PSI  
 SOURCE MONITOR : NEAR FIELD HYDROPHONE  
 MONITOR DEPTH : 18.3 M  
 WELL GEOPHONE : WS  
 RECORDING EQUIPMENT : DIGITAL CART.  
 SAMPLE INTERVAL : 1 MS  
 SURFACE ELEVATION : MSL  
 WATER DEPTH : 122 M  
 VSP DATUM : MSL

## PROCESSING SEQUENCE

S4. EDIT  
 AUTOMATED TRACE ALIGNMENT  
 VERTICAL STACK OF CONSTANT DEPTH TRACES  
 SOURCE SIGNATURE DECONVOLUTION (300MS DERIVATION WINDOW)  
 AMPLITUDE RECOVERY T=1.0  
 FIRST ARRIVALS SHIFTED TO TWO-WAY TIME SUB DATUM  
 DOWNGOING WAVE SUBTRACTION  
 SPECIAL VSP DECONVOLUTION (590 MS DERIVATION WINDOW)  
 BANDPASS FILTER 1-5.80-100HZ  
 TRACKING FILTER (13:1 MEDIAN PICK, 0-4 MS/TR LEFT DIP ENHANCEMENT)  
 BANDPASS FILTER 1-5.80-100HZ

S5. AS FOR S4 EXCEPT  
 BAND PASS FILTER 1-5 80-100 HZ REPLACED BY  
 TIME VARIANT FILTER  
 BEFORE AND AFTER TRACKING FILTER  
 TIME VARIANT FILTER (FROM SEISMIC SECTION LINE GC80-11A)  
 AT 0.16 S 15 - 65 HZ  
 AT 0.56 S 13 - 65 HZ  
 AT 1.16 S 12 - 55 HZ

S4-S5. TRACE EQUALISATION (100 MS WINDOW, 50 MS OVERLAP)  
 PRIOR TO DISPLAY

POLARITY 2 :  
 AN UPGOING COMPRESSION WAVE IS REPRESENTED BY A BLACK PEAK  
 THE DOWNGOING FIRST ARRIVAL COMPRESSION WAVE IS A WHITE TROUGH