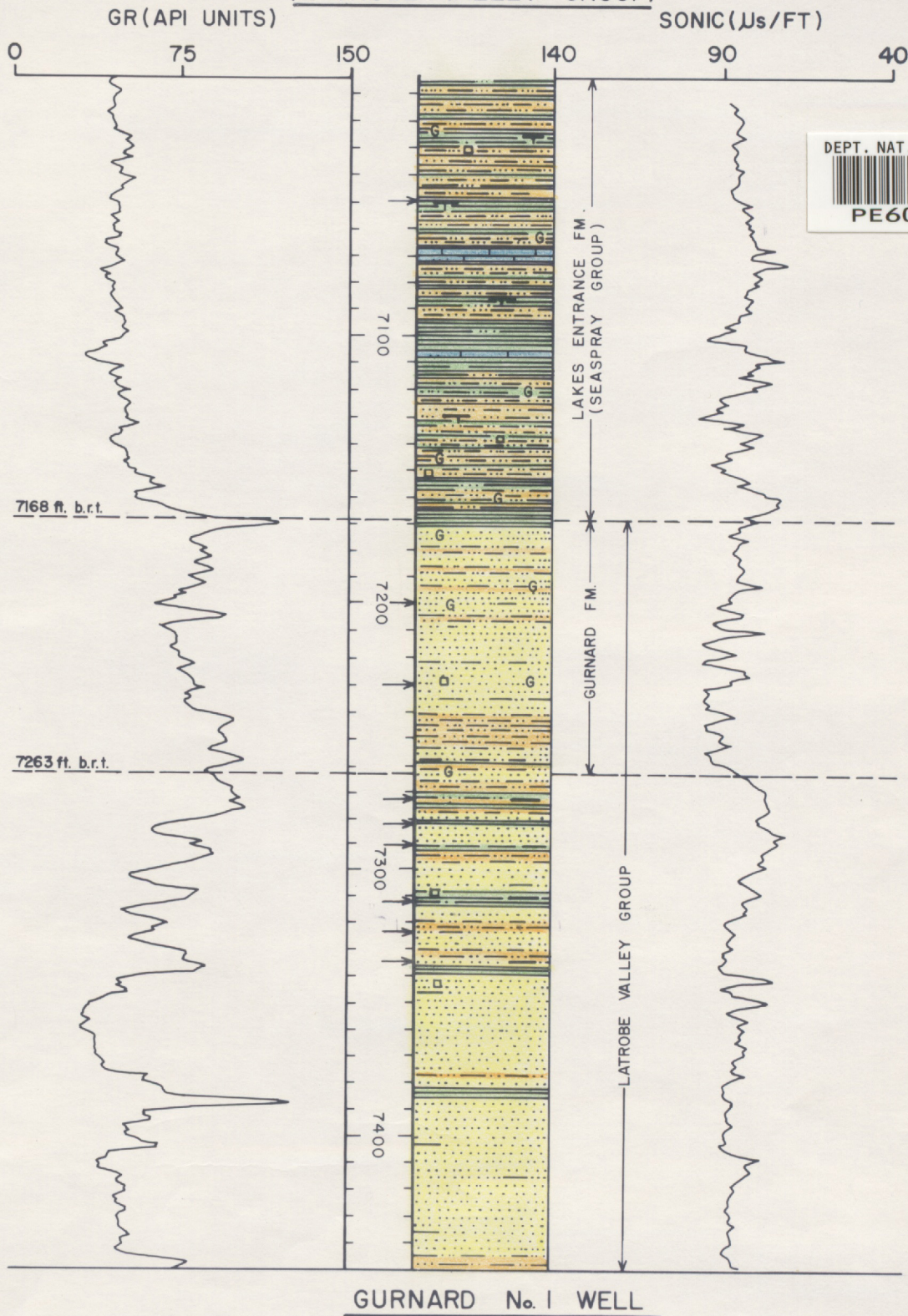


FIGURE 6: TYPE SECTION OF THE GURNARD FORMATION  
(LATROBE VALLEY GROUP)



**Group:** Latrobe Valley

**Formation:** Gurnard

**Type Locality:** Between 7168 ft and 7263 ft b.r.t. in Gurnard No. 1 well, Offshore Gippsland Basin, Victoria, Australia.

**Lithology:** Grey-brown to brown glauconitic very fine grained sandstone, siltstone and mudstone with assorted pebbles

**Distribution:** Rests unconformably upon undifferentiated Latrobe Valley Group, Flounder Formation or Turrum Formation. Separated by a disconformity or diastem from the overlying Lakes Entrance Formation. Attains a maximum thickness of 130 ft over the eastern two-thirds of the Gippsland Basin.

**Age:** Early Oligocene.

**Ref:** James and Evans, APEA Journal 1971