

OIL AND GAS DIVISION

AUSTRALIAN LOG INTERPRETATION CENTRE

REP. INT. RES. & M.V.
REG01184

SEISMIC CALIBRATION
LOG
ADJUSTED CONTINUOUS VELOCITY LOG

SCHUMBERGER

COMPANY ESSO AUSTRALIA LTD.
WELL PERCH #2
FIELD WILDCAT
COUNTRY AUSTRALIA

LOCATION COORDINATES:
LATITUDE 038 34 23.11 S
LONGITUDE 147 19 57.61 E

ELEVATIONS:
KB 21.0 M
DF 20.7 M
GL -45.5 M

COMPUTER CENTER RSJ
ANALYST R. BUNT
JOB REFERENCE S40246
DATE 14-MAR-85

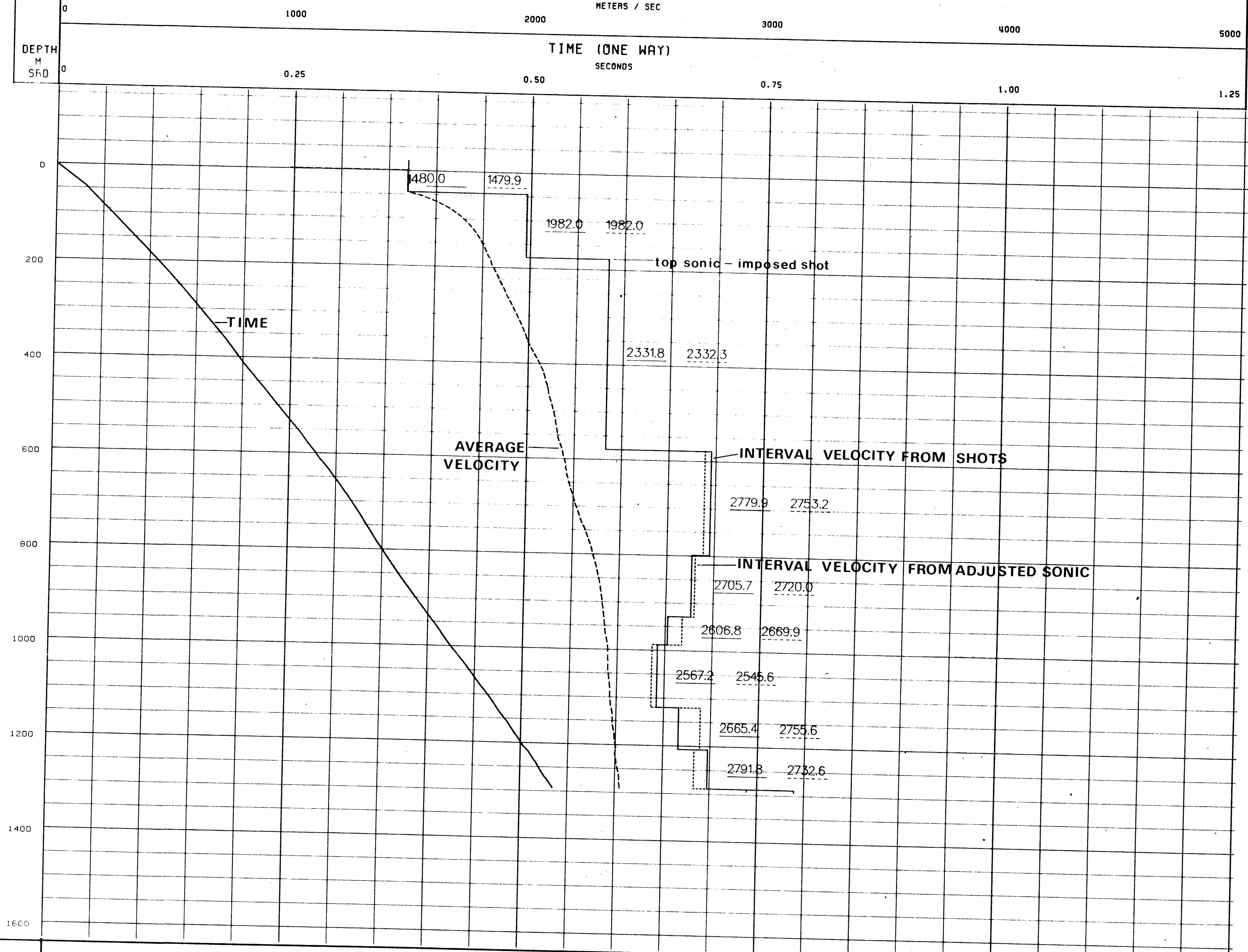
SEISMIC REFERENCE DATUM MSL

NOTE: INTERPRETATION AND GRAPHING BASED ON INTERVALS FROM ELECTRIC SURVEY MEASUREMENTS AND NOT CORRECTED FOR ANOMALIES. THE RECORD IS
CORRECTED FOR ANOMALIES AND INTERPRETATION MADE BY MSL. THE DATE OF THIS INTERPRETATION IS 14-MAR-85. THE RECORD IS NOT
CORRECTED FOR ANOMALIES AND INTERPRETATION MADE BY MSL. THE DATE OF THIS INTERPRETATION IS 14-MAR-85. THE RECORD IS NOT
CORRECTED FOR ANOMALIES AND INTERPRETATION MADE BY MSL. THE DATE OF THIS INTERPRETATION IS 14-MAR-85. THE RECORD IS NOT

UNITS: METRES
PERMANENT DATUM: MSL
LOGS MEASURED FROM: DF
DRILLING MEASURED FROM: DF
VELOCITY LOG DEPTHS REFERRED TO: MSL
DATES OF SONIC RUNS: 14-FEB-85, 1-MAR-85
DATES OF CHECK SHOTS RUNS: 1-MAR-85
WELL TOTAL DEPTH: 1315 M
TOTAL NUMBER OF CHECK SHOTS LEVELS: 9
WELL DEVIATION: NIL

SONIC RUN DATE LOGGED GUN ELEVATION ACCEL. ELEVATION
2 1-MAR-85 -9.1M AMSL -9.1M AMSL
BIT SIZE/DEPTH CASING SIZE/DEPTH GUN OFFSET HWDG OFFSET
12.25/1321 M 13.375/800 M 40 M 40 M
BOT INTERVAL TOP INTERVAL SONDE TYPE
1315 M 189 M MSC-B

AVERAGE AND INTERVAL VELOCITIES



AVERAGE AND INTERVAL VELOCITIES

