

CL 874 HEAD



GEO-PLOT

CORE LABORATORIES, INC.

COMPANY ESSO AUSTRALIA, LTD.
 WELL OPAR # 1
 FIELD GIPFELAND BASIN
 COUNTY BASS STRAIT STATE VICTORIA
 LOCATION LATS 38° 51' 45.806" S ELEVATION MSL
LONG: 148° 16' 42.205" E 341'

DEPTH LOGGED FROM 860' TO 8205'
 DATE LOGGED 26th FEBRUARY 1977 - 11th MARCH 1977
 CREW CHIEF LA ROSA FILE NO. ESP 1010
 DRLG. FLUID SEA WATER SEAFLOOR TO 864'
SEA WATER/GEL 864' TO 2912'
FRESH WATER/GEL 2912' - 8205'

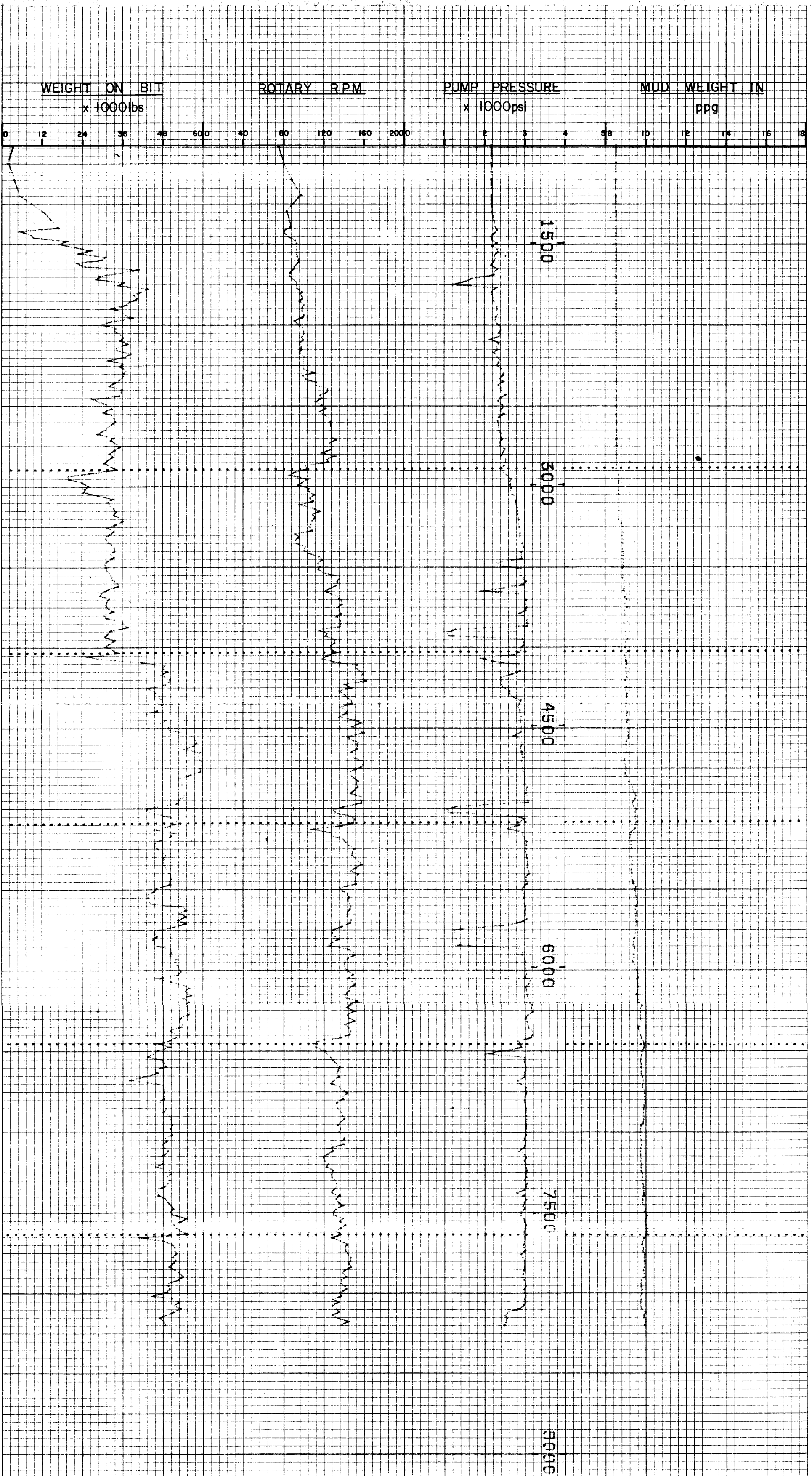
DEPT. NAT. RES & ENV



PE603569

EXTENDED SERVICE LOGGING

VERTICAL SCALE
1" = 600'



These analyses, opinions or interpretations are based on observations and material supplied by the client to whom, and for whose exclusive and confidential use, this report is made. The interpretations or opinions represent the best judgment of Core Laboratories, Inc. (All errors and omissions excepted). Core Laboratories, Inc. and its officers and employees, assume no responsibility and make no warranty or representations as to the productivity, proper operation, or profitability of any oil, gas or other mineral well or sand in connection with which such report is used or relied upon.