



GEOGRAM*

(Synthetic Seismogram)

* A Mark of Schlumberger

Company: ESSO AUSTRALIA LTD. **35 Hz**
 Well: MOONFISH-2
 Field: MOONFISH
 Country: AUSTRALIA
 Reference No: SYU 561061 Interval: 2296.00 to 147.00
 Date Logged: 19-JAN-1995 Date Processed: 08-JAN-1995
 Location: 038 08' 57.698" S 148 01' 18.937" E
 Elevation: KB: 30.90 DF: 30.50 GL: -53.90
 Permanent Datum: MSL Depth Units: METRES

LOG INFORMATION

FIELD RECORDING: Engineer: RON JONSON Location: VEA Program Version: 700-67
 COMPUTER: Analyst: A WBRIDNO Camer: 871 Station: 20.5
 Logging Datum: ELEVATION ABOVE MEAN SEA LEVEL
 Seismic Reference Datum: 30.80
 Seismic Reference Datum: 0.00
 Sonic Calibration By Check Shots: YES Sonic Edited by Analyst: YES
 Two-Way Time Sample Interval: 2 ms Environment: OFFSHORE

True Vertical Depth Corrections Applied: YES
 Source of True Vertical Depth Data: 24.1 DEG
 Medium Hole Deviation:

Run	Date	Tool Type	Bit Size	Depth	Change Size	Top Depth	Bottom Depth
ONE	21-12-94	45/28		17.5 IN		141 M	605 M
TWO	16-01-95	DB/28		12.26 IN		790 M	2296 M
TWO	16-01-95	LD-CNL		12.26 IN		1475 M	2296 M

GEOGRAM MODEL ASSUMPTIONS

Equal time slice model of horizontal plane layers.
 Plane acoustic waves at normal incidence.
 No intrinsic attenuation.
POLARITY
 An upgoing wave, reflected by an increase in acoustic impedance with depth, is displayed as a white trough under normal polarity.
SIGNATURES
 All signatures displayed in this Geogram result correspond to a wavelet convolved with a reflection coefficient of 0.5 (A decrease in acoustic impedance with depth).

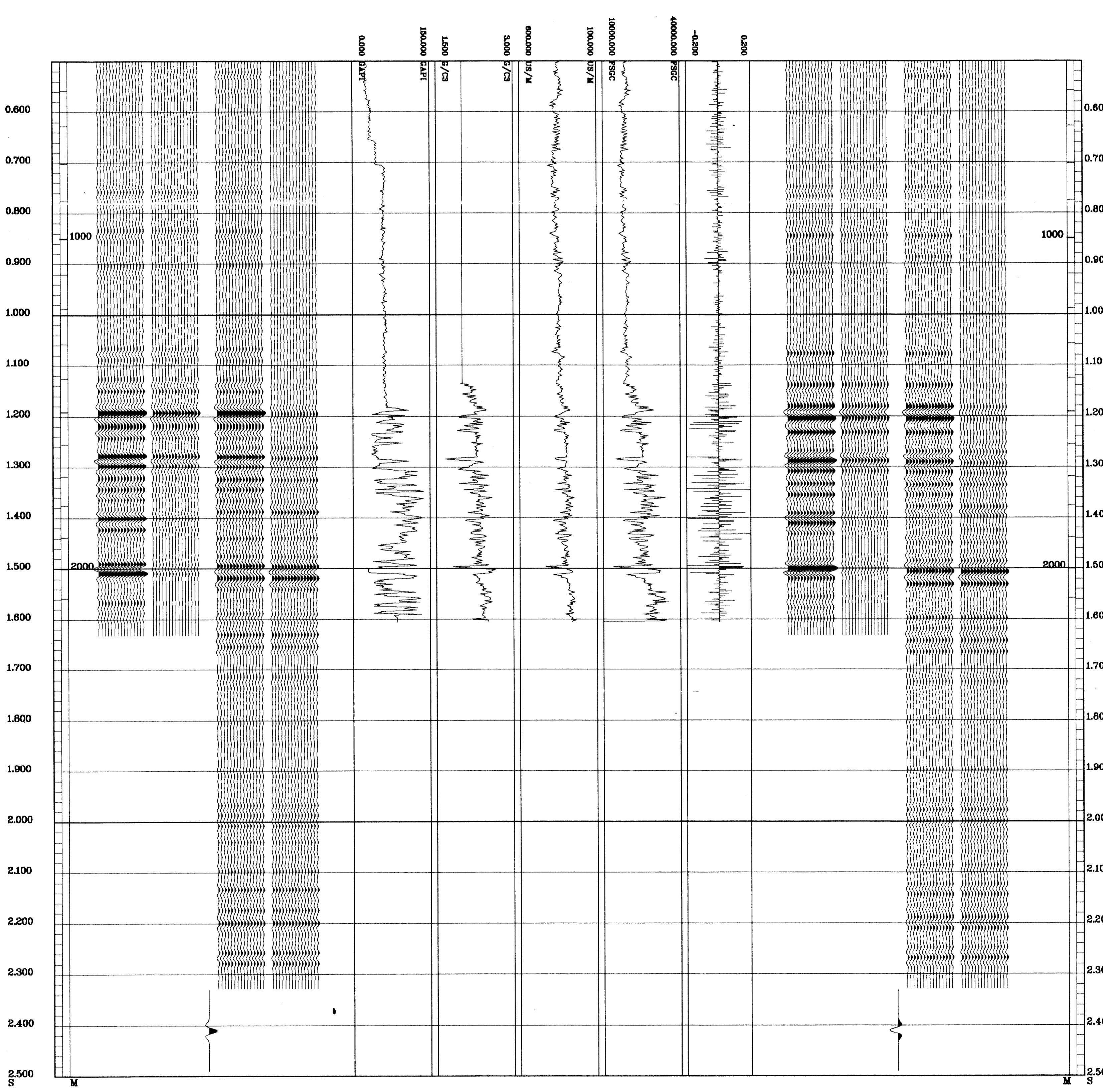
REMARKS

The well name, location and borehole reference data were furnished by the customer.

All interpretations are opinions based on inference from electrical or other measurements and we cannot, and do not guarantee the accuracy or correctness of any interpretations, and we shall not, except in the case of gross or willful negligence on our part, be liable or responsible for any loss, costs, damages or expenses incurred or sustained by anyone resulting from any interpretations made by any of our officers, agents or employees. These interpretations are also subject to Clause 4 of our General Terms and Conditions as set out in our current Price Schedule.

**** GEOGRAM ****
35 HERTZ ZERO PHASE
RICKER WAVELET
 VERTICAL SCALE = 20 CM/SEC

MULTIPLES ONLY REVERSE POLARITY
PRIMARIES AND MULTIPLES REVERSE POLARITY
PRIMARIES WITH TRANSMISSION LOSS REVERSE POLARITY
PRIMARIES REVERSE POLARITY
REFLECTION
ACOUSTIC IMPEDANCE
SONIC
DENSITY
GAMMA RAY
MULTIPLES ONLY NORMAL POLARITY
PRIMARIES AND MULTIPLES NORMAL POLARITY
PRIMARIES WITH TRANSMISSION LOSS NORMAL POLARITY
PRIMARIES NORMAL POLARITY



COMPANY ESSO AUSTRALIA LTD.
 FIELD MOONFISH
 WELL MOONFISH-2
 COUNTRY AUSTRALIA

