

# GEOGRAM

(Synthetic Seismogram)



Company: ESSO AUSTRALIA LTD

Well: MOONFISH 1

Field: WILDCAT

Country: AUSTRALIA

Reference No: 560808

Date Logged: 13/07/92

Location: 38 14 7" S

Elevations: KB: 23.00 DF: 22.70 GL: -82.00

Permanent Datum: MSL

Depth Units: METRES

Interval: 2800.00 to 185.00

Date Processed: 27/7/92

148 02 2" E

ELEVATION ABOVE MEAN SEA LEVEL

Logging Datum: 23.00

Seismic Reference Datum: 0.00

Sonic Calibration by Check Shot: YES

Sonic Edited by Analyst: YES

Two-Way Time Sample Interval: 2 ms

Environment: offshore

True Vertical Depth Corrections Applied:

Source of True Vertical Depth Data:

Maximum Hole Deviation:

Run	Date	Type	BSF	Depth	Gamma Ray	Depth	Gamma Ray	Top	Bottom
1	14-08-92	AS						802 M	75 M
2	14-07-92	AS					2802 M	843 M	843 M
			Gun	Chal	Gun	Chal	Gun	Chal	Gun
			13 M BELOW HELL		13 M BELOW HELL		13 M BELOW HELL		13 M BELOW HELL

**GEOGRAM MODEL ASSUMPTIONS**

Equal time slice model of horizontal plane waves.

Plane acoustic waves at normal incidence.

No intrinsic attenuation.

**POLARITY**

An upgoing wave, reflected by an increase in acoustic impedance with depth, is displayed as a white trough under normal polarity.

**SIGNALURES**

All signatures displayed in the Geogram results correspond to a wavelet convolved with a reflection coefficient of -0.5 (A decrease in acoustic impedance with depth).

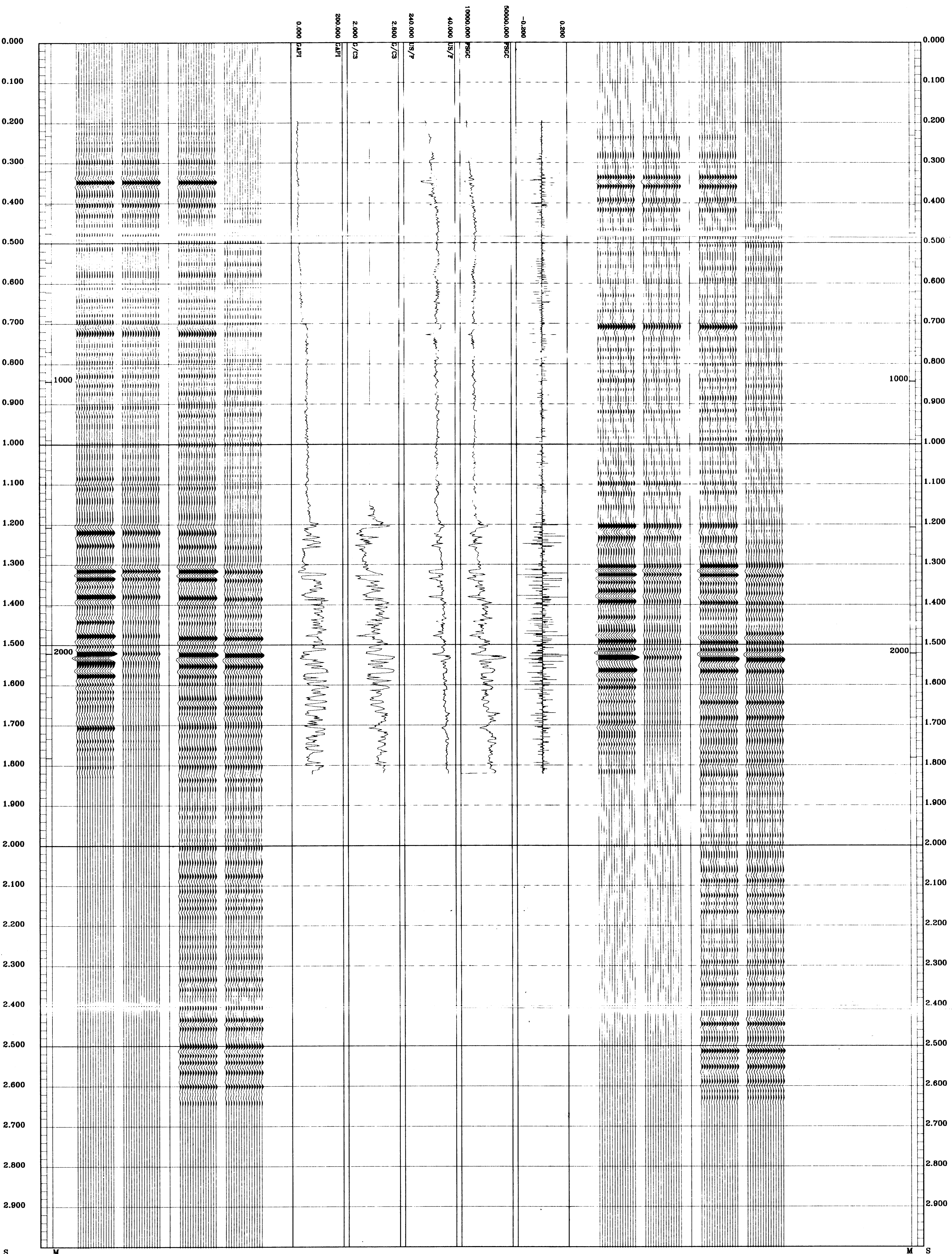
PHI VALUES

FOLD HERE

All interpretations are opinions based on inferences from electrical or other measurements and we cannot and do not guarantee the accuracy or correctness of any interpretations, and we shall not, except in the case of gross or willful negligence on our part, be liable or responsible for any loss, costs, damages or expenses incurred or sustained by anyone resulting from any interpretations made by any of our officers, agents or employees. These interpretations are also subject to Clause 4 of our General Terms and Conditions as set out in our current Price Schedule.

**\*\* GEOGRAM \*\***  
**35 HERTZ ZERO PHASE**  
**RICKER WAVELET WITH -90 DEG. PHASE SHIFT**  
**MOONFISH-1**

MULTIPLES ONLY REVERSE POLARITY
PRIMARIES AND MULTIPLES REVERSE POLARITY
PRIMARIES WITH TRANSMISSION LOSS REVERSE POLARITY
PRIMARIES REVERSE POLARITY
REFLECTION
ACOUSTIC IMPEDANCE
SONIC
DENSITY
GAMMA RAY
MULTIPLES ONLY NORMAL POLARITY
PRIMARIES AND MULTIPLES NORMAL POLARITY
PRIMARIES WITH TRANSMISSION LOSS NORMAL POLARITY
PRIMARIES NORMAL POLARITY



COMPANY ESSO AUSTRALIA LTD  
 FIELD WILDCAT  
 WELL MOONFISH 1  
 COUNTRY AUSTRALIA