

SEISMIC CALIBRATION LOG

(Adjusted Continuous Velocity Log)



Company: ESSO AUSTRALIA LTD

Well: MOONFISH 1

Field: WILDCAT

Country: AUSTRALIA

Reference No: 569808

Date Logged: 13-07-92

Location: 38 14 7" S

Elevations: NS: 23.00 DF: 22.70 GL: -52.00

Permanent Datum: MSL

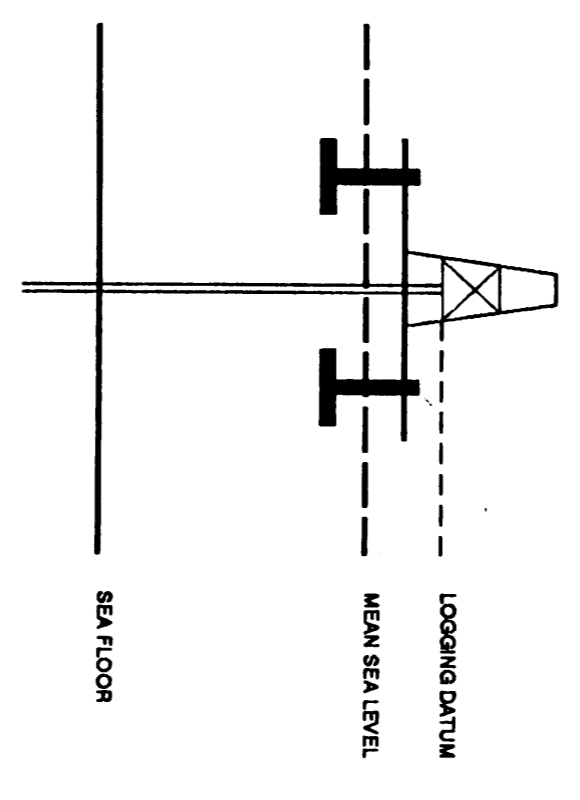
Field Recording: M HELING

Computer: 1 SPYGLASS

Logging Datum: 23.00

Seismic Reference Datum: 0.00

ELEVATION ABOVE MEAN SEA LEVEL

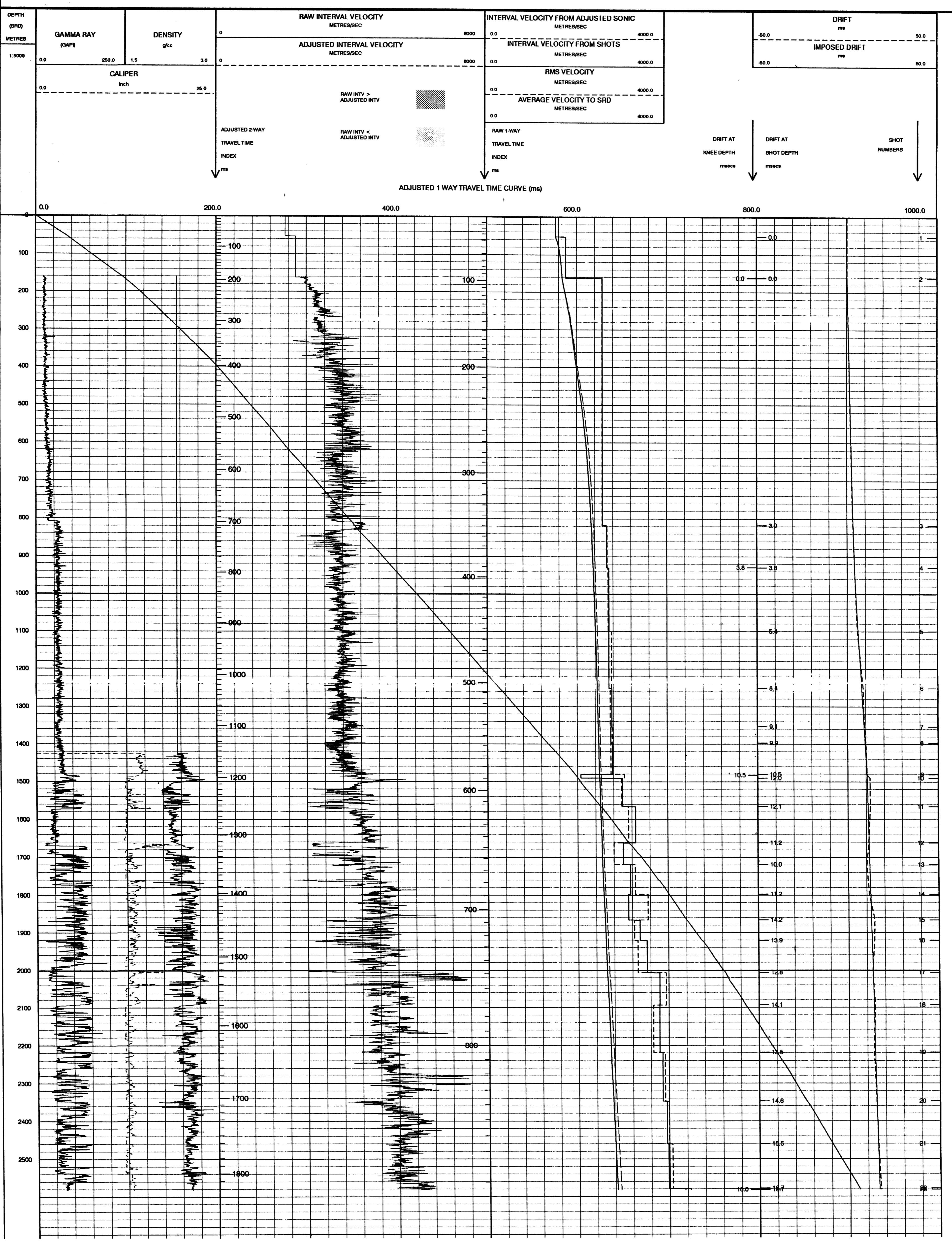


Total Number of Levels: 20

Depth Reference Time Reference

Run	Date	Tool Type	SRD	SRD	SRD	SRD
1	13-07-92	AS				
2	13-07-92	AS				

All interpretations are opinions based on inferences from electrical or other measurements and we warrant, and do not guarantee the accuracy or correctness of any interpretations, and we shall not, except in the case of gross or willful negligence on our part, be liable or responsible for any loss, costs, damages or expenses incurred or sustained by anyone resulting from any interpretations made by any of our officers, agents or employees. These interpretations are also subject to Clause 4 of our General Terms and Conditions as set out in our current Price Schedule.



COMPANY ESSO AUSTRALIA LTD
FIELD WILDCAT
WELL MOONFISH 1
COUNTRY AUSTRALIA

