

# V I C T O R I A



AUSTRALIA - SOUTH COAST

## WELLINGTON TO GABO ISLAND INCLUDING TASMANIA

DEPTHS IN FATHOMS

1:1,000,000 at Lat. 27° 15' S

DEPT. NAT. RES. & ENV.



PE906068

Depths in fathoms (under eleven in fathoms and feet) are given to Indian Spring Low Water. Depths in feet are given above Mean Higher High Water or, where indicated, to the Australian datum.

Surveys to 1970. Admiralty surveys, seismic and passage soundings to 1970.

WELLHEADS

Temporarily abandoned wells may have wellhead gear projecting up to about 26 feet (8 metres) from the sea bed.

Submerged production wells are marked by light-buoys.

CAUTION - OMISSIONS In the areas covered by larger scale charts these must be consulted for buoys, lights, beacons and wrecks as on this chart only the principal aids to navigation are shown.

Information in the chart is subject to change without notice.

Information in the chart is subject to change without notice.

Information in the chart is subject to change without notice.

Information in the chart is subject to change without notice.

Information in the chart is subject to change without notice.

Information in the chart is subject to change without notice.

Information in the chart is subject to change without notice.

Information in the chart is subject to change without notice.

Information in the chart is subject to change without notice.

Information in the chart is subject to change without notice.

Information in the chart is subject to change without notice.

Information in the chart is subject to change without notice.

Information in the chart is subject to change without notice.

Information in the chart is subject to change without notice.

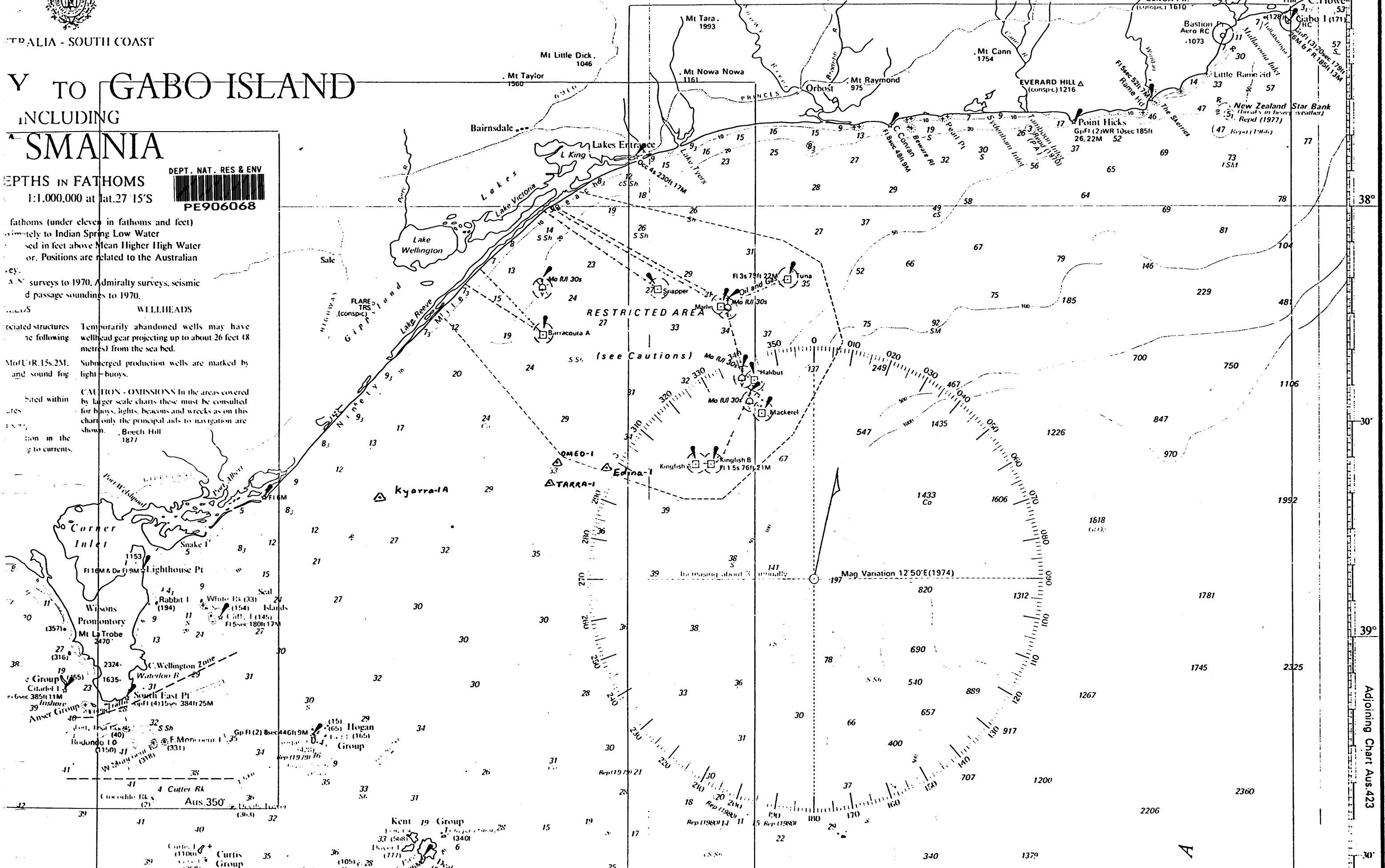
Information in the chart is subject to change without notice.

Information in the chart is subject to change without notice.

Information in the chart is subject to change without notice.

Information in the chart is subject to change without notice.

Information in the chart is subject to change without notice.



Adjoining Chart Aus. 423

30'