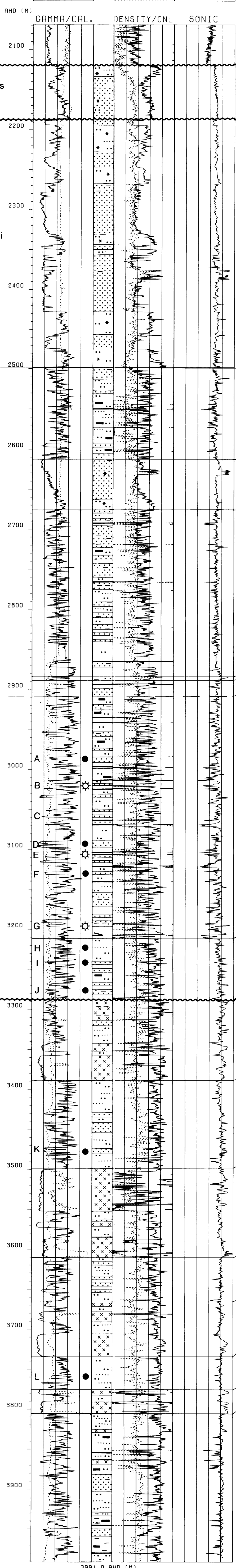


BASKER-1

Operator - SHELL KB - 25m amsl
 Water Depth - 162m bmsl TD - 3991m KB
 Status - P & A 1983

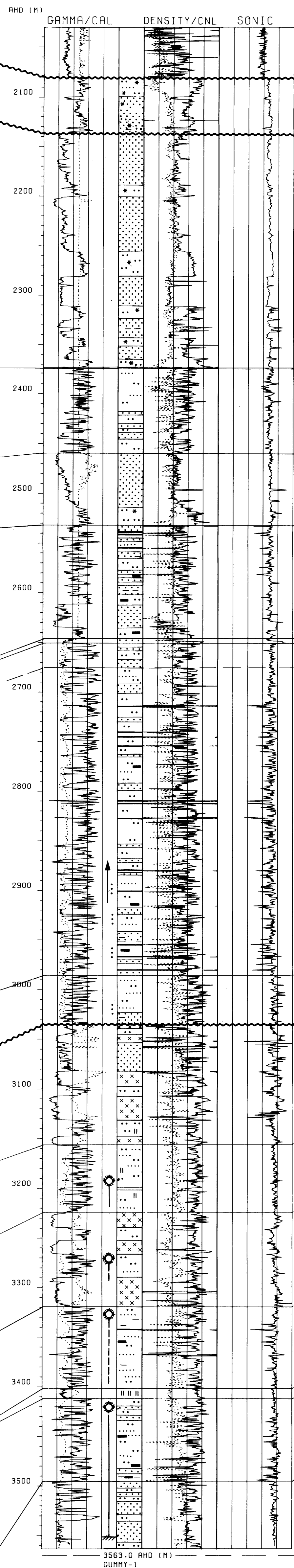
CAL 5.00 20.00 FDC 1.85 2.85
 GR 0.0 200.00 CNL 45.00 15.00190.00 BCSL 40.00



GUMMY-1

Operator - Shell KB - 28m amsl
 Water Depth - 156m bmsl TD - 3563m KB
 Status - P & A 1990

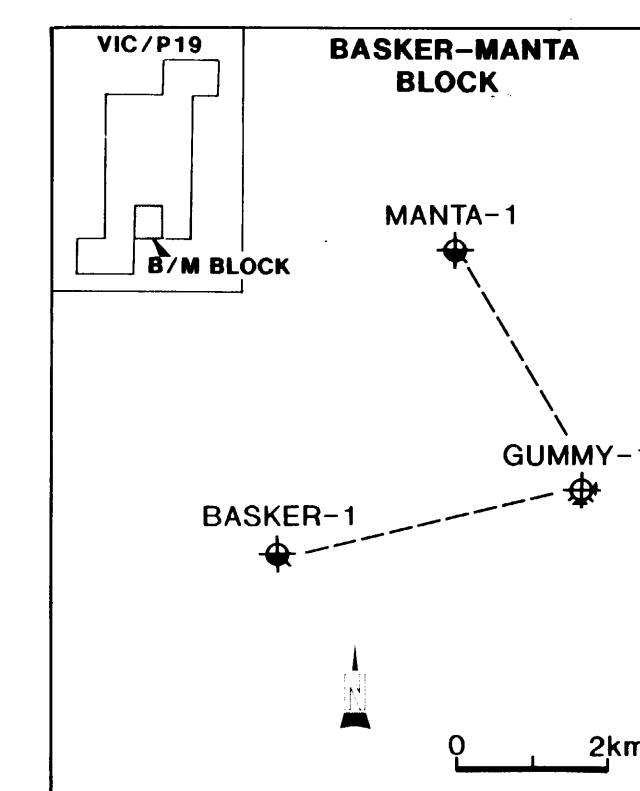
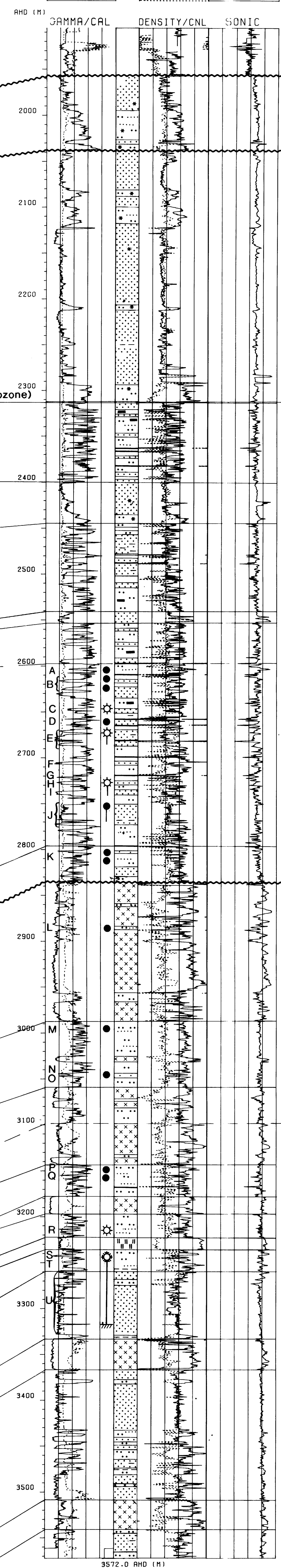
CAL 5.00 20.00 FDC 1.85 2.85
 GR 0.0 200.00 CNL 45.00 15.00190.00 BCSL 40.00



MANTA-1

Operator - SHELL KB - 25m amsl
 Water Depth - 133.5m bmsl TD - 3572m KB
 Status - P & A 1984

CAL 5.00 20.00 FDC 1.85 2.85
 GR 0.0 200.00 CNL 45.00 15.00190.00 BCSL 40.00



DEPT. NAT. RES. & ENV.
 PE600935

SCALE

HORIZONTAL: NOT TO SCALE
 VERTICAL: 1 : 2.500

SHELL-AUSTRALIA E & P. OIL AND GAS
 GIPPSLAND BASIN
**WELL CORRELATION
 BASKER-1 TO MANTA-1**
 Author: EXO Date: DEC. 1990
 Report No.: SDA 976 Drawing No.: 26470 Encl. 2