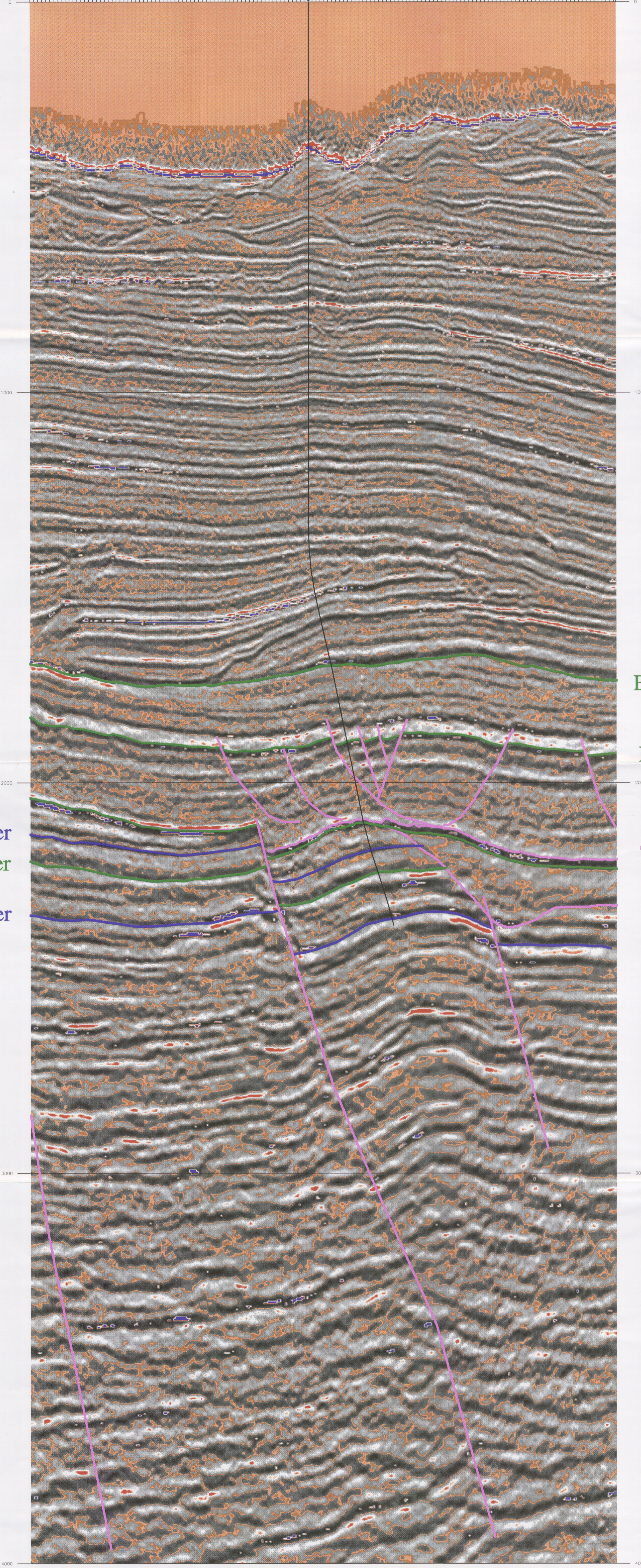


CDP TRACE 300 200 99 88 80 72 64 56 48 40 32 24 16 8 0



GUDGEON 1 CROSSLINE 1366

Company:	ESSO AUSTRALIA RESOURCES LTD
Created:	23-Oct-95 18:14:28
Prepared by:	C. JENKINS
IES User:	CCJENKI
IES Project:	SMCHAN
Survey:	SMCHAN
Number of panels:	1
IES Plotting Release Date:	02/16/94

Schlumberger  
GeoQuest

Panel Number: 1

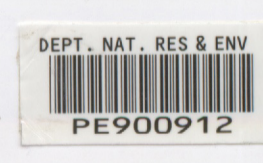
Line:	Cross-Line CDP=1366 SMCHAN	Object ID:	SMC-1366X	Version:	1
Line Type:	Cross-Line	CDP:	99-398	SP:	99-398
Trace:	1-300				

Azimuth: 132.8      Parity: Normal  
 Traces/cm: 20.00      Centimeters/Second

Declination: 1  
 Map Distance Across Panel: 7475.00Meters  
 Trace Spacing: 25.00Meters  
 Display Scale: 250.00 Meters/cm  
 Time Range: 0-4000 Milliseconds  
 Scale Mode is Line      Scale Value is 150.00

Chrome Seismic Marker  
Terracotta Seismic Marker  
Bronze Seismic Marker

Base High Velocity Channel  
Mid Miocene  
Top Latrobe (Predrill)  
Top Latrobe (Post Drill)  
Base Eocene Channel  
Bronze Seismic Marker  
(Base Cemented Sandstone)



ESSO AUSTRALIA RESOURCES LTD  
**GIPPSLAND BASIN**  
 VICTORIA  
  
**Gudgeon-1**  
**Seismic Crossline 1366**

CONTOUR INTERVAL:	AUTHOR: C. Jenkins
ENCLOSURE: 4	DRAWN:
TO ACCOMPANY:	DATE: 23/10/95
Gudgeon-1 Well Completion Report	