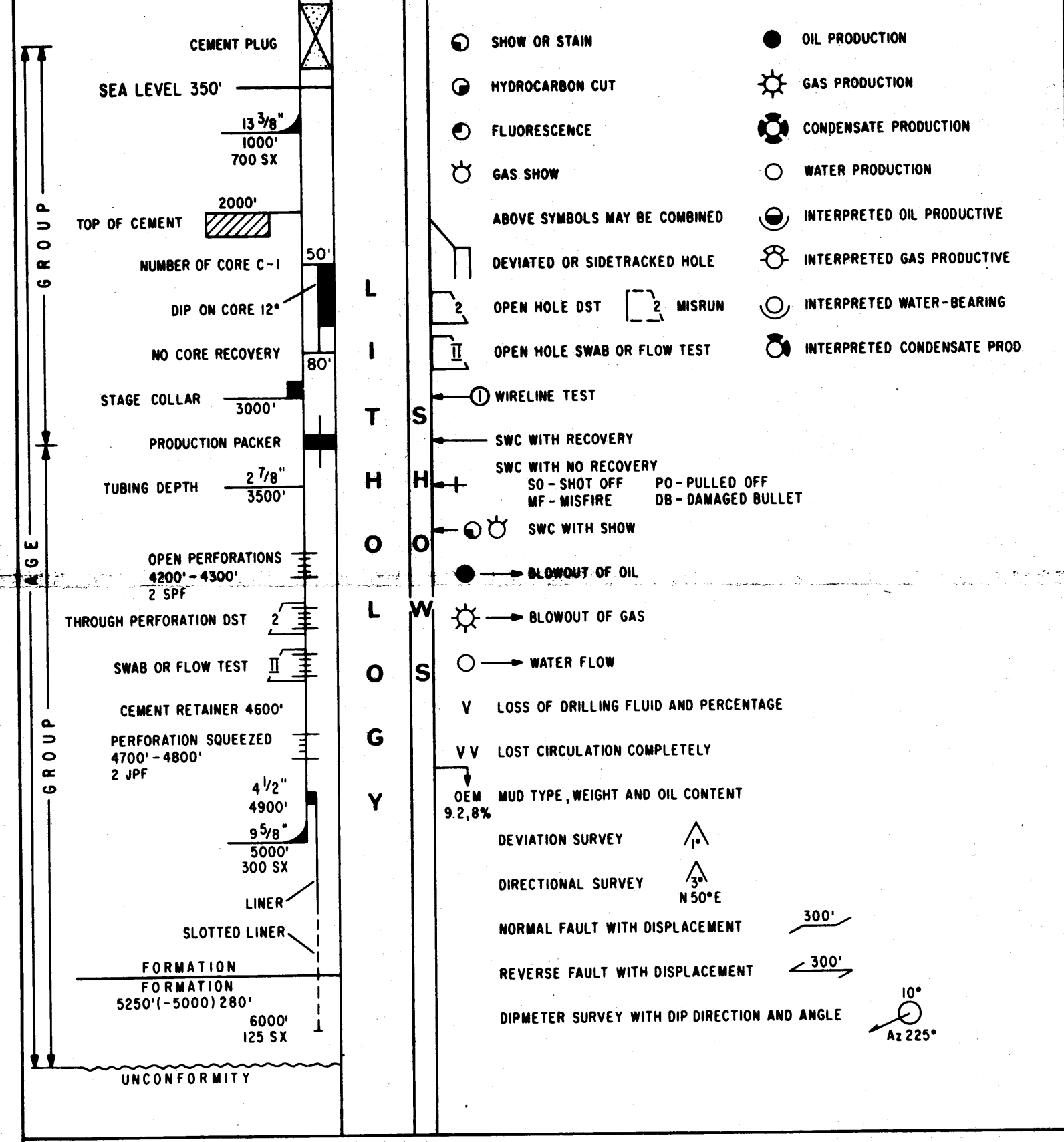


ESSO EXPLORATION AND PRODUCTION AUSTRALIA INC.

WELL COMPLETION LOG (TVD)
FORTESCUE - 3
LATROBE GROUP

CONCESSION: VIC/L5 STATE: VICTORIA BASIN: GIPPSLAND
 LOCATION: Lat. 38° 23' 23" S X 610 677-10mE
 Long. 148° 16' 02" E Y 5 750 164-73mN
 ELEVATION: G.L. M.S.L. K.B. 21m WATER DEPTH: 69m
 SPUNDED: 28-11-78 RIG RELEASED: 25-12-78 DRILLED BY: OCEAN DIGGER
 CLASSIFICATION: SUCCESSFUL OUTPOST STATUS: PLUGGED & ABANDONED
 TOTAL DEPTH: 2605m TVD 2625m MDKB PLUGGED BACK T.D.: 125m

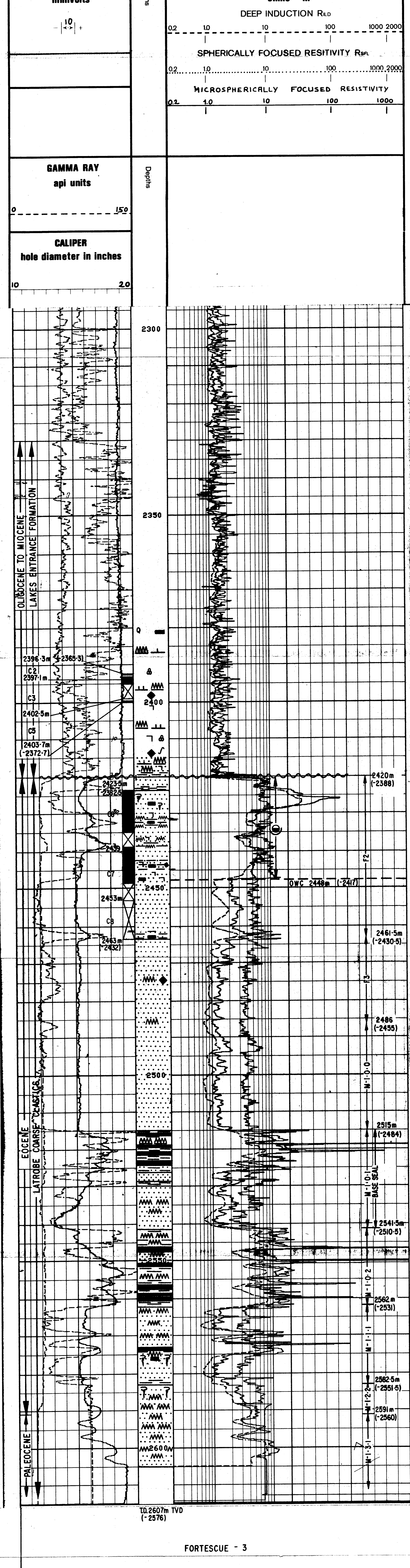
CASING AND TUBING			PLUGS			PERFORATIONS			
SIZE	SET AT	SX. CMT.	FORMATION	FROM	TO	SX. CMT.	FROM	TO	No./FT.



LITHOLOGIC SYMBOLS

	CLAYSTONE (nonfissile)		GRANULE-BOULDER, CONGLOMERATE		BRACHIOPODS
	CLAY (fissile) or SHALE		OOLITES		GASTROPODS
	MUDSTONE		QUARTZ		CEPHALOPODS
	SILT and SILTSTONE		LITHIC or ROCK FRAGMENTS		PELECYPODS
	SAND and SANDSTONE		PYRITE		ECHINOIDS
	LIMESTONE		CHERT		FISH REMAINS
	DOLOMITE		COAL		ALGAE
	CALCAREOUS		CARBONACEOUS MATTER		PLANT REMAINS
	M = MICRITIC LIMESTONE		GLAUCONITE		SPORES
	G = GRANULAR LIMESTONE		VOLCANICS		LEAVES
	S = SKELETAL LIMESTONE		CORALS		FORAM GENERAL
	MARL		BRYOZOANS		FOSSILS, MICROFOSSILS

GEOLOGISTS LITHOLOGY INTERPRETED BY: V. ZIOLKOWSKI DATE: MAY 1979



TD 2607m TVD (-2576)
FORTESCUE - 3

NOTE: Depths shown are True Vertical
 Depths and/or Subsea Depths.
 PREPARED BY: V. ZIOLKOWSKI
 DATE: MAY 1979