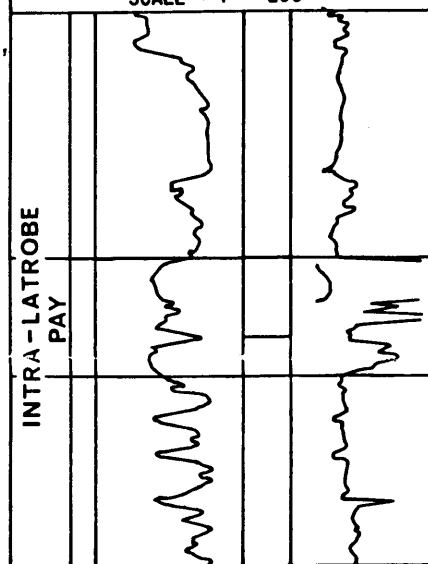


FLOUNDER 1

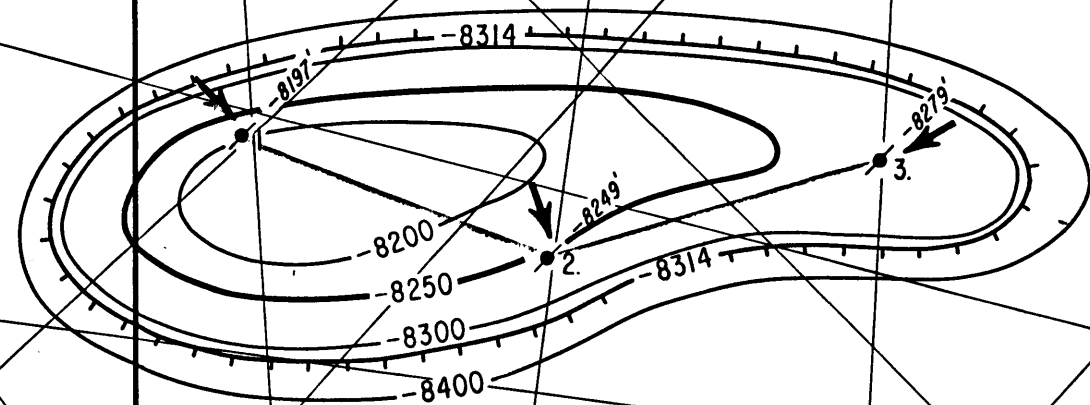
SCALE : 1" = 200'



148° 25'

148° 30'

INTERPRETATIVE



VIC/L4

38° 20'

VIC/L5

VIC/L6

VIC/P1

LEGEND

- | | |
|--------------------------------------|------------------------------------|
| □ Drilling platform | — Seismic control |
| ● Oil well | ⊙ Abandoned |
| ⊙ Interpreted oil productive | ⊙ Interpreted gas productive |
| ⊙ Gas well | ⊙ Abandoned |
| ⊙ Interpreted gas and oil productive | ⊙ Abandoned |
| ⊙ Gas and oil well | ⊙ Abandoned |
| ⊙ Interpreted water productive | ⊙ Dry and abandoned well |
| ⊙ Dry and abandoned with show of oil | |
| — Gas-oil contact | — Oil-water contact |
| — Limit of truncation | — Updip limit of oil in gas column |
| — Downdip limit of gas in oil column | — Updip limit of water |
| — Downdip limit of hydrocarbons | U
D Fault 'D' downthrown side |

ESSO EXPLORATION AND PRODUCTION AUSTRALIA INC.

FLOUNDER FIELD
GIPPSLAND BASIN, VICTORIA
STRUCTURE MAP
TOP OF INTRA-LATROBE PAY

DEPT. NAT. RES & ENV



PE905270

Scale 1:50,000



MILES

AUTHOR: D.B. DEPEW

DRAFTED BY: G.C. THOMAS

JUNE 1969.

Flounder 3, -2, -1

Dwg: 1137/OP/17

3643