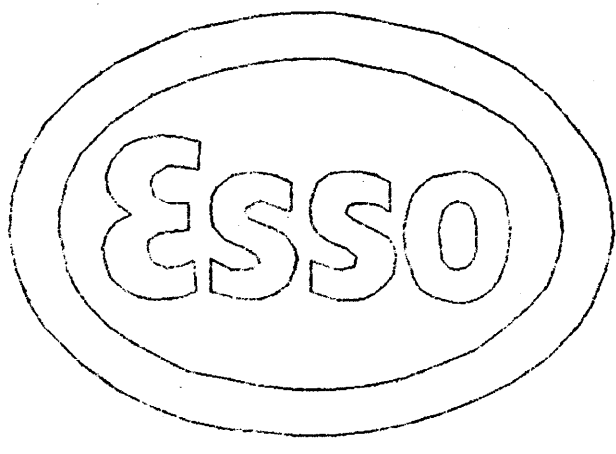


W.C.R. VOLLII



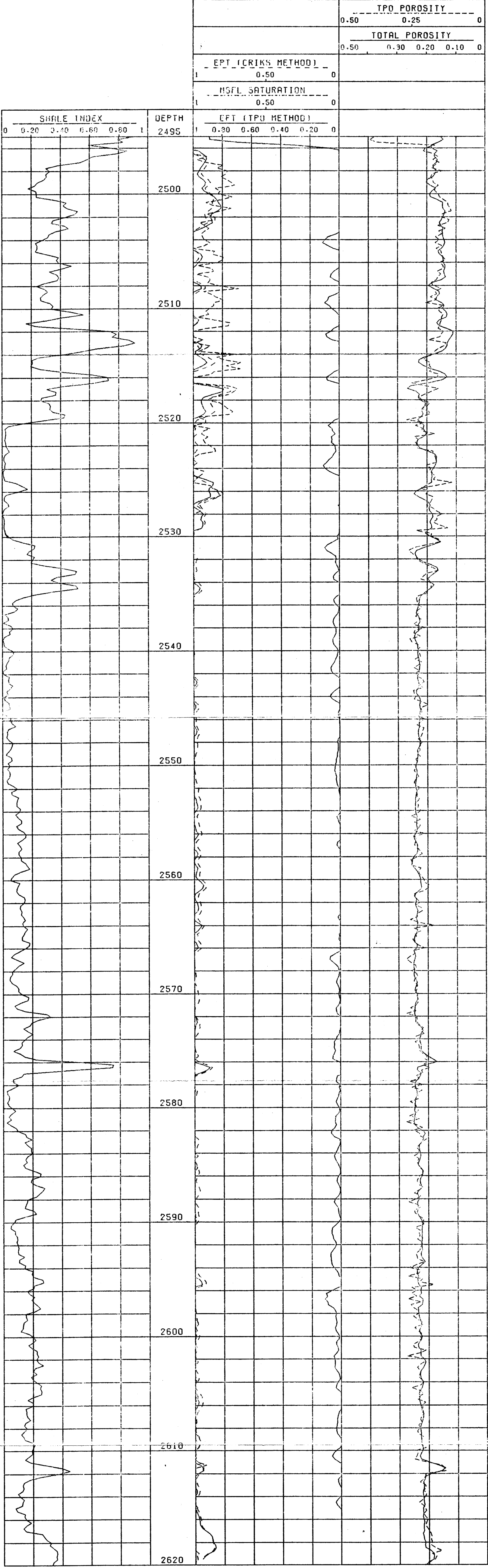
DEPT. NAT. RES & ENV  
PE601193  
(from PE902447)

AUSTRALIA LTD

# EAST KINGFISH-1

## EPT ANALYSIS

SCALE=1:200.00  
DEPTHS IN METRES



```

*****
*****
****  PLOT FILE EPT.GP          ****
****  12 FEBRUARY 1985        ****
****  D HENDERSON             ****
****  COMPARISON OF FLUSHED ZONE ****
****  WATER SATURATION USING MSFL ****
****  AND EPT LOGS           ****
****  EPT ANALYSED USING TPD AND ****
****  CRIKS METHOD            ****
****  BOTH METHODS USED 2 MINERALS ****
*****
*****
PREVIEW
1

```