

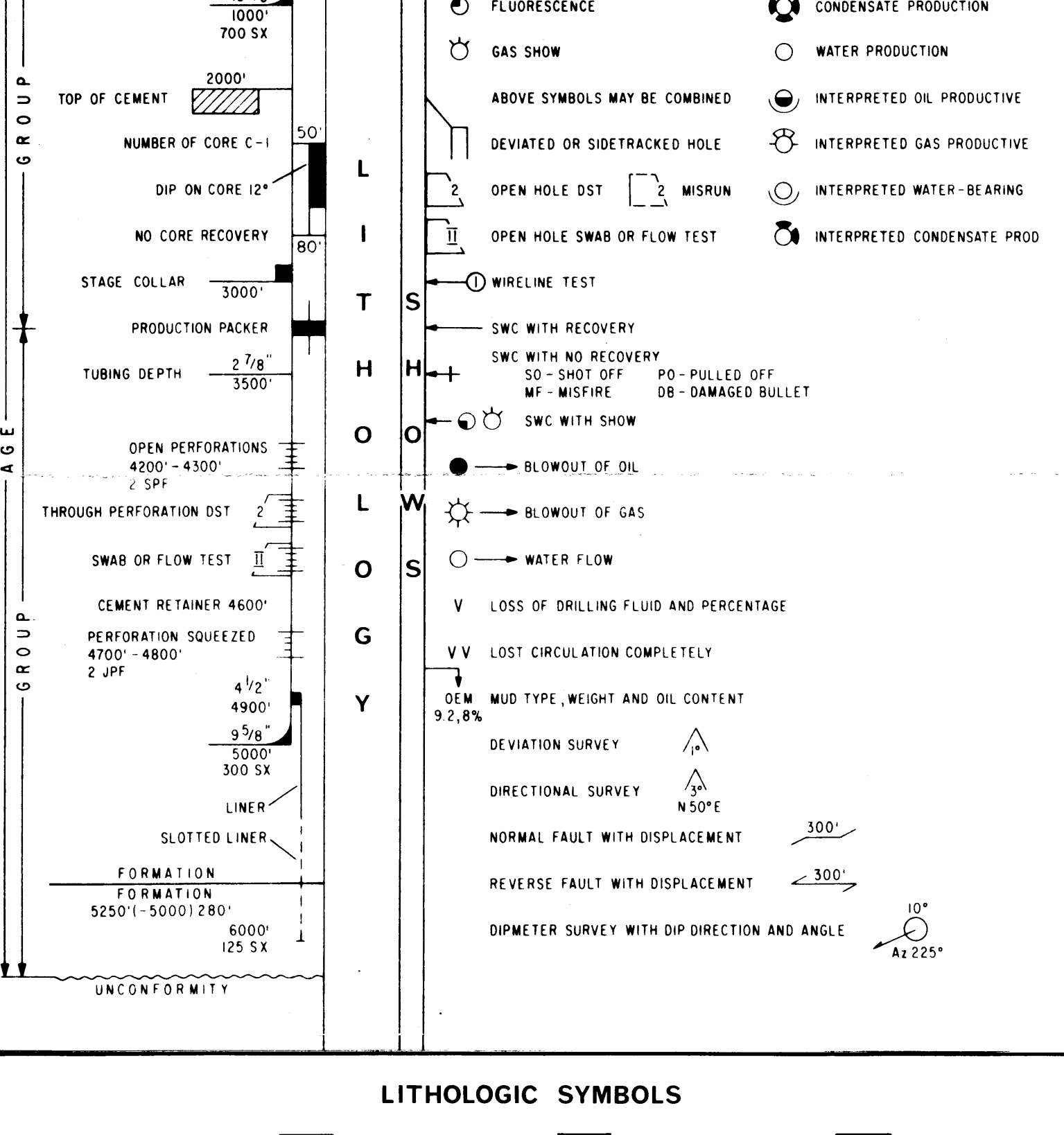


WELL COMPLETION LOG

DART-1

CONCESSION: VIC P/1 STATE: VICTORIA BASIN: GIPPSLAND
 LOCATION: Lat. 38°08'11.970S X 668861
 Long. 148°55'28.235E Y 5777258
 ELEVATION: G.L. S.L. K.B. 32' WATER DEPTH: 407'
 SPUDDED: 16/11/73 RIG RELEASED: 22/11/73 DRILLED BY: GLOMAR CONCEPTION
 I.P. ESTABLISHED:
 CLASSIFICATION: WILDCAT STATUS: DRY AND ABANDONED
 TOTAL DEPTH: 4000' (1219m.) PLUGGED BACK T.D.: 525' (160m.)

CASING AND TUBING				PLUGS			PERFORATIONS		
SIZE	SET AT	SX. CMT.	FORMATION	FROM	TO	SX. CMT.	FROM	TO	No./FT.
10-3/4"	1942'	290	GIPPSLAND	2053'	1759'	160			
20"	825'	1100	GIPPSLAND	770'	510'	115			



LITHOLOGIC SYMBOLS

	CLAYSTONE		SHALE		MUDSTONE		SILTSTONE
	SANDSTONE		LIMESTONE		LIMESTONE (MICRITIC)		LIMESTONE (GRANULAR)
	LIMESTONE (SKELETAL)		DOLOMITE		MARL		GRANULE, BOULDER, CONGLOMERATE
	COAL		VOLCANICS		IGNEOUS		NO SAMPLE
	LITHIC OR ROCK FRAGMENTS		CALCAREOUS		DOLOMITIC		SIDERITIC
	GLAUCONITIC		PYRITIC		MICACEOUS		CARBONACEOUS
	CHELT		QUARTZ		FELDSPAR		OOBITES
	LUMPS AND AGGREGATES		LEAVES		ALGAE		CORAL
	BRACHIOPODS		GASTROPODS		CEPHALOPODS		PELECYPDS
	ECHINIDS		FORAMS		SPICULES		BRYZOANS
	CRINIDS		STROMATOPOROIDS		FISH REMAINS		PLANT REMAINS
	SPORES		FOSSILS, MICROFOSSILS				

WIRE LINE LOGGING SERVICES

LOG	INTERVAL	LOG	INTERVAL
BHCS/GR	1994'-827' SLK		
	1994'-400' GR		
ISF/SLK/SP	3998'-1955'		
GR/FDC/CNL	4002'-FDC/CNL 2600'		
	4002'-GR 1810'		
DIPMETER 4 ARM	3999'-2900'		

Date	18 Nov. '73	21 Nov. '73	21 Nov. '73	20 Nov. '73
Run No.	1			1
Depth - Driller	2000	4000	4000	4000
Depth - Logger	2000	4003	4001	4005
First Reading	1994	4002	3999	3998
Last Reading	SLK 827, GR 400	FDC/CNL 2600GR1800	DIPMETER 2900	1955 ISF/SONIC
Casing - Driller	20" @ 825'	10-3/4" @ 1942'	10-3/4" @ 1942'	10-3/4" @ 1942'
Casing - Logger	827'	1955'	1955'	1955'
Bit Size	13-3/4"	9-7/8"	9-7/8"	9-7/8"
Type Fluid in Hole	GEL + WATER	LIGNOSULFONATE	LIGNOSULFONATE	LIGNOSULFONATE
Density	9.0	11.6	4.3	11.6
Viscosity	7.0	9.8	4.3	9.8
pH	Fluid Loss			
Source of Sample	FLOWLINE	FLOWLINE	FLOWLINE	FLOWLINE
Rm at Meas. Temp.	0.28 at 76 °F	at °F	0.92 at 67 °F	0.92 at 67 °F
Rmf at Meas. Temp.	0.23 at 71 °F	at °F	0.62 at 66 °F	0.62 at 66 °F
Rmc at Meas. Temp.	0.44 at 73 °F	at °F	1.35 at 66 °F	1.35 at 66 °F
Source: Rmf Rmc	PRESS	PRESS	PRESS	PRESS
Rm of BHT	at °F	at °F	0.45 at 127 °F	0.49 at 118 °F
Time Since Circ.	2 1/2 hrs.		11.5 hrs.	3 hrs.
Max. Rec. Temp.	122°F		127°F	118°F
Equip. Location	CHAFFE	CHAFFE	2080 SALE	2080 CHAFFE
Recorded By	BLACK	BLACK	BLACK	BLACK
Witnessed By	BLACK	BLACK	BLACK	BLACK

REMARKS:

LOGGING DATA		EQUIPMENT DATA	
Run No.	1	Run No.	1
Type of Sonde	ISF	Panel	VA-53
Stand-off	1 1/2"	Cartridge	MA-123
S. B. R.	1	Sonde	S - 124
		Test Loop	-

SPONTANEOUS POTENTIAL millivolts	DEPTHS	RESISTIVITY	CONDUCTIVITY
		ohms - m ² /m	millimhos - m/m ² = $\frac{1000}{\text{ohms} \cdot \text{m}^2/\text{m}}$
	0	SFL	6FF40 INDUCTION
	0	10	2000
	0	100	
	0	AMPLIFIED SFL	2
	0	INDUCTION	10
	0		

