

Final No 2

SEISMIC CALIBRATION LOG

(Adjusted Continuous Velocity Log)

WELL: CONGER #1
FIELD: WILDCAT
COUNTRY: AUSTRALIA

Company: ESSO AUSTRALIA LTD
Well: CONGER #1
Field: WILDCAT
Country: AUSTRALIA

Reference No: 55326 Interval: 297000 to 210000

Date Logged: 15-MAR-89 Date Processed: 10-MAR-89

Location: 038 21' 27.21" S 148 03' 48.89" E

Elevations: KB: 2100 DF: 20.70 GL: -65.00

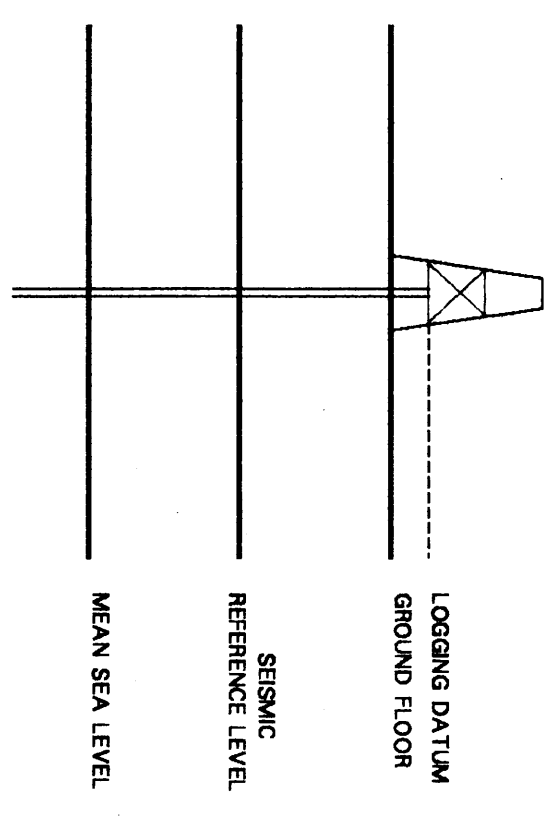
Permanent Datum: MSL Depth Units: METRES

FIELD RECORDING: Engineer: Y. ZHANG Location: Program Version: 30.4

COMPUTATION: Analyst: M. SANDERS Centre: SVJ Basefile: 16.80073

Logging Datum: 2100
ELEVATION ABOVE MEAN SEA LEVEL

Seismic Reference Datum: 000



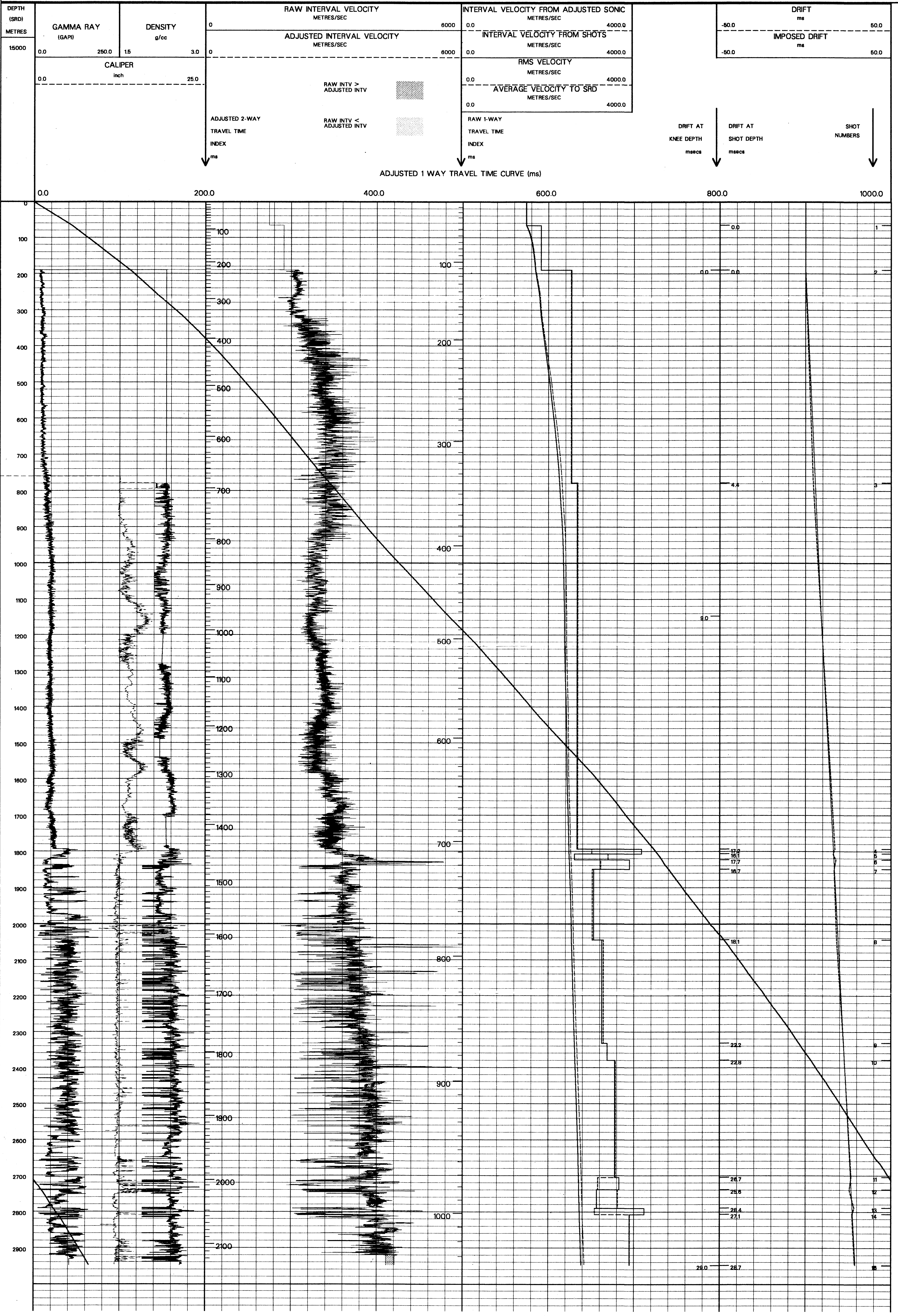
Total Number of Levels: SRD
Depth Reference: SRD
Time Reference: SRD

Run	Date	Tool Type	Bit Size/Depth	Casing Size/Depth	Top Depth	Bottom Depth
1	15-MAR-89	40 M	40 M	9 M BELOW MSR	14 M BELOW MSR	

USP Run	Date	Gun Offset	Hydro Offset	Gun Elevation	Hydro Elevation	Gun Azimuth	Hydro Azimuth
1	15-MAR-89	40 M	40 M	9 M BELOW MSR	14 M BELOW MSR		

REMARKS

All interpretations are opinions based on inferences from electrical or other measurements and we cannot, and do not guarantee the accuracy or correctness of any interpretations, and we shall not, except in the case of gross or willful negligence on our part, be liable or responsible for any loss, costs, damages or expenses incurred or sustained by anyone resulting from any interpretations made by any of our officers, agents or employees. These interpretations are also subject to Clause 4 of our General Terms and Conditions as set out in our current Price Schedule.



COMPANY ESSO AUSTRALIA LTD
FIELD WILDCAT
WELL CONGER #1
COUNTRY AUSTRALIA

