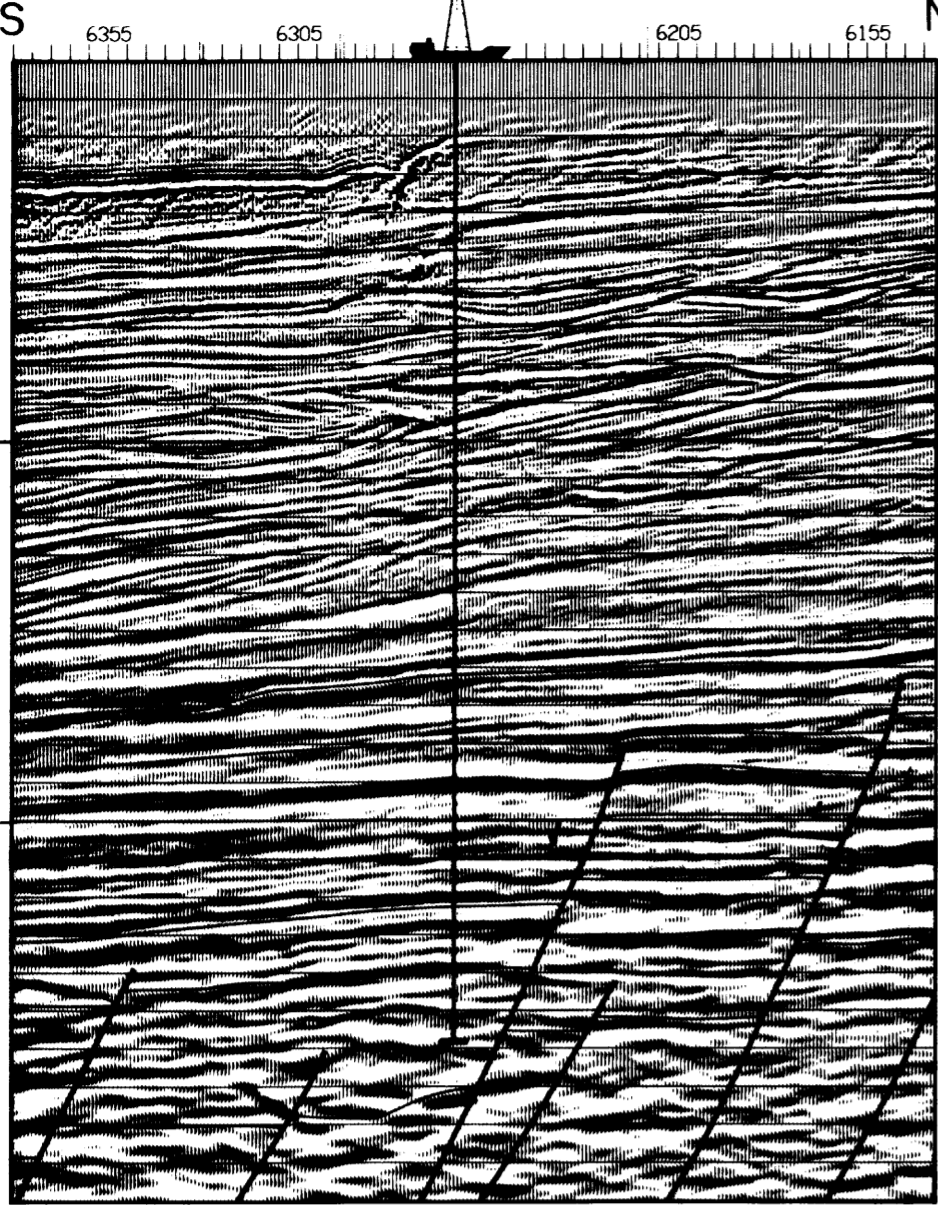


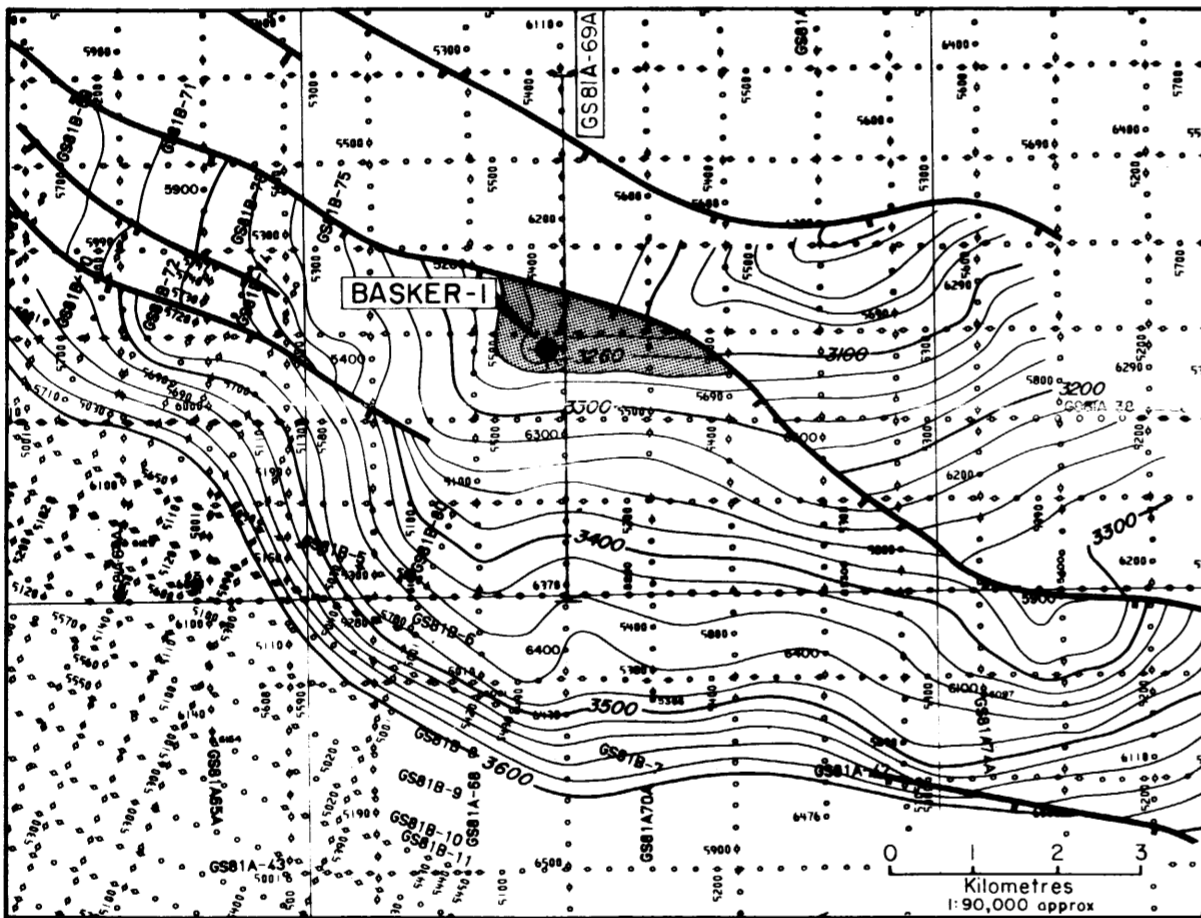
LINE GS81A-69A

PROJECTED
BASKER-I.

Kilometre



TWO-WAY TIME IN SECONDS



MIGRATED DEPTH CONTOUR MAP LOWER CAMPANIAN MARKER
CONTOUR INTERVAL 20m.

MAXIMUM EXTENT OF OIL

SUMMARY

Location : Basker-1 was drilled 17km NE of Volador-1 and 20km east of the Flounder oil field.

Objectives : The primary objective section of Basker-1 was the sequence below the intra-Campanian seismic marker, which comprises coastal plain sandstones interbedded with carbonaceous shales and siltstones.

Results : The top of significant gas and oil shows in Basker-1 occurred at depths of 2810m and 2985m bdf respectively. Good oil indications were observed in scattered thin sands between 3090 and 3245m. According to the logs two of the sands (3090-3098m and 3129-3132m) had good porosity and hydrocarbon saturations, and after RFT's had recovered oil these were production tested. Pressure data indicated an oil/water contact at 3108m and that the sands were not laterally extensive.

Conclusions : Although Basker-1 encountered oil in thin fluvial Upper Campanian sandstones, which produced up to 4967 BOPD on test pressure data suggests the sandstones have limited lateral extent and reserve estimates imply a non-commercial accumulation.

Production Test:

No.1 : 3090-3094, 3095-3098m
Flowed 4967 bbl/day oil and 4.82 MMSCF/D gas on a 3/4" choke.
Oil 39° API.

No.2 : 3128.5-3132m
Flowed 3270 bbl/day and 11.8 MMSCF/D gas on a 3/4" choke.
Oil 41° API.

SHELL - AUSTRALIA E. & P. OIL AND GAS.

GIPPSLAND BASIN VIC/PI9
BASKER-I

WELL SUMMARY SHEET

CO-ORDS: LAT 38° 18' 26.5" S ELEVATION DF 25m
LONG 148° 41' 53.2" E WATER DEPTH 162m
PERMIT No: VIC/PI9 TOTAL DEPTH 3991m
STATE: VICTORIA RIG FORAMER 'NYMPHEA'
OPERATOR: SHELL (40%) SPUDDED 21/4/83
PARTNERS: TNT(20%), NEWSCOMPLETED 8/9/83
(20%), MIN(5%), CRUS R(15%) TYPE COMP P & A

DEPTH BDF FEET	TIME STRATIGRAPHY	CASING CORES SWS	LITHOLOGY & INDICATIONS	ROCK STRATIGRAPHY [REGEO CODES]	LOGS
0			SEA LEVEL 25m		
1000			SEA FLOOR 187m		
1000	PLIOCENE	30" 234m		GIPPSLAND LIMESTONE	
2000		20" 498m			
3000					
4000	LATE MIOCENE	13% 1104m	Marl, ge, foss, intbd with Calcarenite		
5000					
6000	MID MIOCENE		Marl, ge, foss and Clst glc	LAKES ENTRANCE FORMATION	
7000	EARLY MIOCENE				
8000	Eocene		Siltst qe - bw	FLOUNDER FORMATION	
9000	PALEOCENE		Ss qz		
10000			Sh glc		
11000	MAASTRICHTIAN	9% 2853m	Ss f-m, qz intbd with Siltst Clst & Coal.		
12000					
13000	CAMPANIAN	CORE 1 3108 3126 rec 100%	Volcanics qe gn weathering products intbd with Ss f-crs calc cmt Siltst mic		
14000					
15000					
16000					
17000					
18000					
19000					
20000					
21000					
22000					
23000					
24000					
25000					
26000					
27000					
28000					
29000					
30000					
31000					
32000					
33000					
34000					
35000					
36000					
37000					
38000					
39000					
40000					

DEPTH (m)	TYPE	CHAMBER	RECOVERY
3091-5	Segregated	1 (6 gal)	9 litres waxy crude 46 SCF gas 10 litres filtrate R sample 0-225 ohmm 67° F 0-6 litres oil
3951	Non segregated	1 (6 gal)	2 litres water R sample 0-235 ohmm 62° F
3131	Non segregated	1 (1 gal)	0-5 litres oil 2-23 SCF gas 3 litres water R sample 0-202 ohmm 62° F

completion Report