

SEISMIC CALIBRATION LOG

(Adjusted Continuous Velocity Log)



Company: ESSO AUSTRALIA LTD
 Well: BLENNY 1
 Field: WILDCAT
 Country: AUSTRALIA

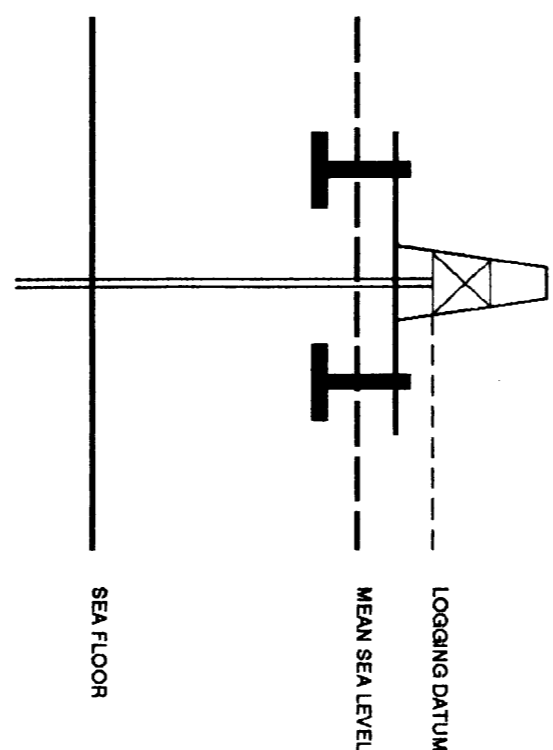
Reference No: 560786 Interval: 1385.00 to 180.00
 Date Logged: 7-05-92 Date Processed: 21-5-92

Location: 38 47 3" S 147 41' 4" EE
 Elevations: KB: 22.00 DF: 21.70 GL: -40.00
 Permanent Datum: MSL Depth Units: METRES

FIELD RECORDING: Engineer: D. SMITH Location: Program Version: 32.4
 COMPUTATION: Analyst: T. BOWMAN Core: SVI Baseline: 20.0

ELEVATION ABOVE MEAN SEA LEVEL

Logging Datum: 22.00
 Seismic Reference Datum: 0.00



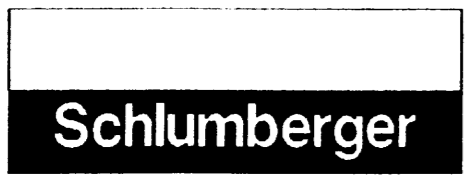
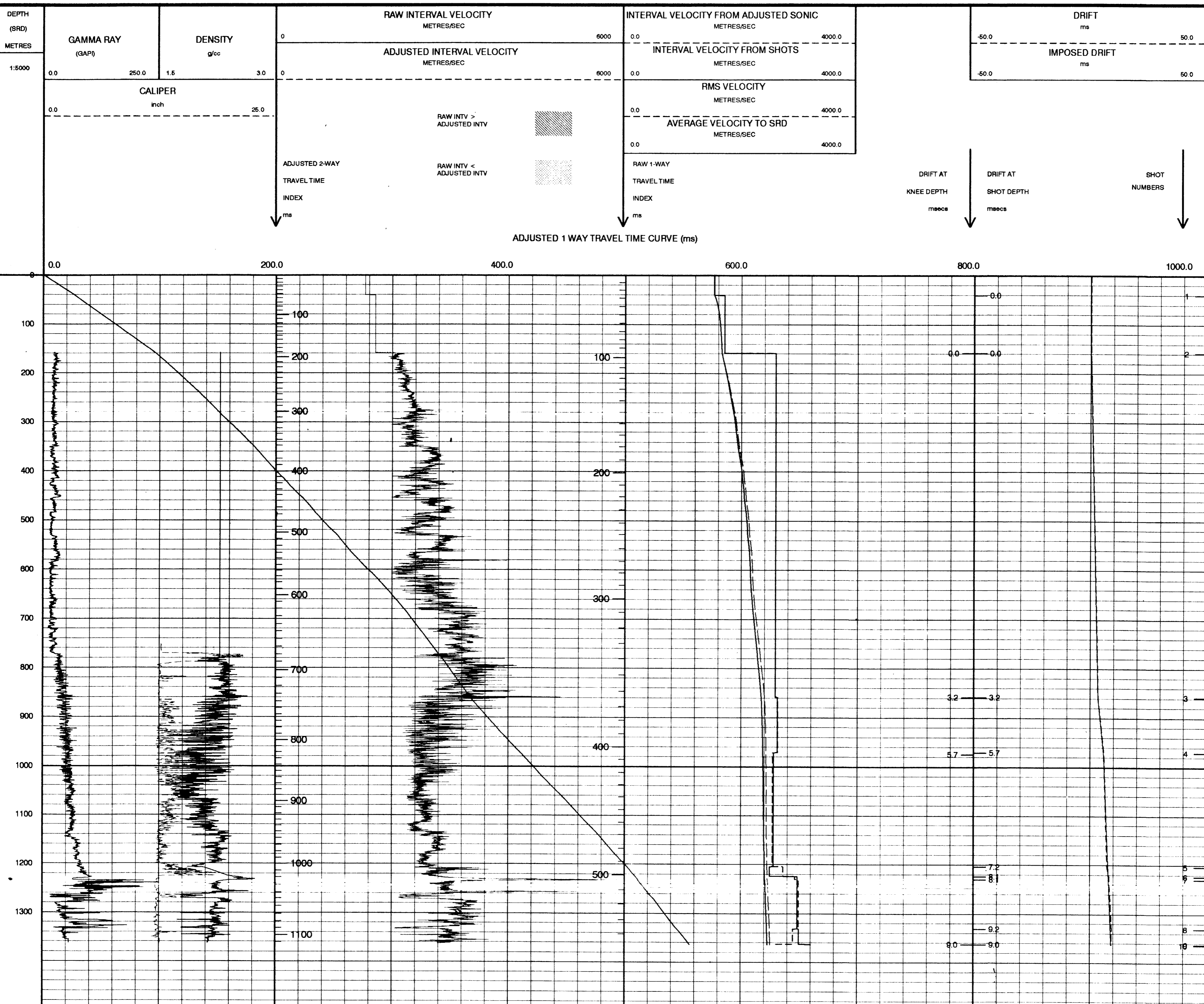
Total Number of Levels: 7

Depth Reference: SRD

Run	Date	Tool Type	Bit Size/Depth	Casing Size/Depth	Top Depth	Bottom Depth
1	4-05-92	AS			810 M	157 M
2	7-05-92	AS			1403	782
1	8-05-92	88 M	10 M BELOW MSL	16 M BELOW MSL	143	143
2						

REMARKS

All interpretations are opinions based on inferences from electrical or other measurements and we cannot, and do not guarantee the accuracy or correctness of any interpretations, and we shall not, except in the case of gross or willful negligence on our part, be liable or responsible for any loss, costs, damages or expenses incurred or sustained by anyone resulting from any interpretations made by any of our officers, agents or employees. These interpretations are also subject to Clause 4 of our General Terms and Conditions as set out in our current Price Schedule.



COMPANY ESSO AUSTRALIA LTD
 FIELD WILDCAT
 WELL BLENNY 1
 COUNTRY AUSTRALIA