

SEISMIC CALIBRATION LOG

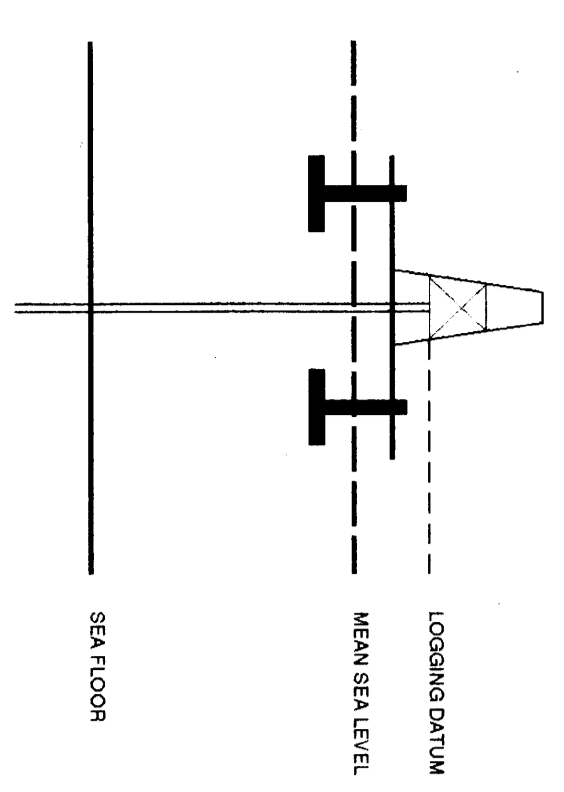
(Adjusted Continuous Velocity Log)



Company: ESSO AUSTRALIA LTD.
 Well: BLACKBACK #3
 Field: BLACKBACK
 Country: AUSTRALIA

Date Logged: 05-APR-1994 Date Processed: 12-APR-1994
 Location: OGR 31 34 64" S 148 31 05 50" E
 Elevations: KB: 25.00 DF: 24.70 GL: -318.00
 Permanent Datum: MSL Depth Units: METRES
 Field Recorder: S. MANANDEL Location: VFA Program Version: 520-43
 COMPUTERIZATION Analyst: A. WISBONO Charts: SVI Barlines: 5.5
 ELEVATION ABOVE MEAN SEA LEVEL

Logging Datum: 25.00
 Seismic Reference Datum: 0.00



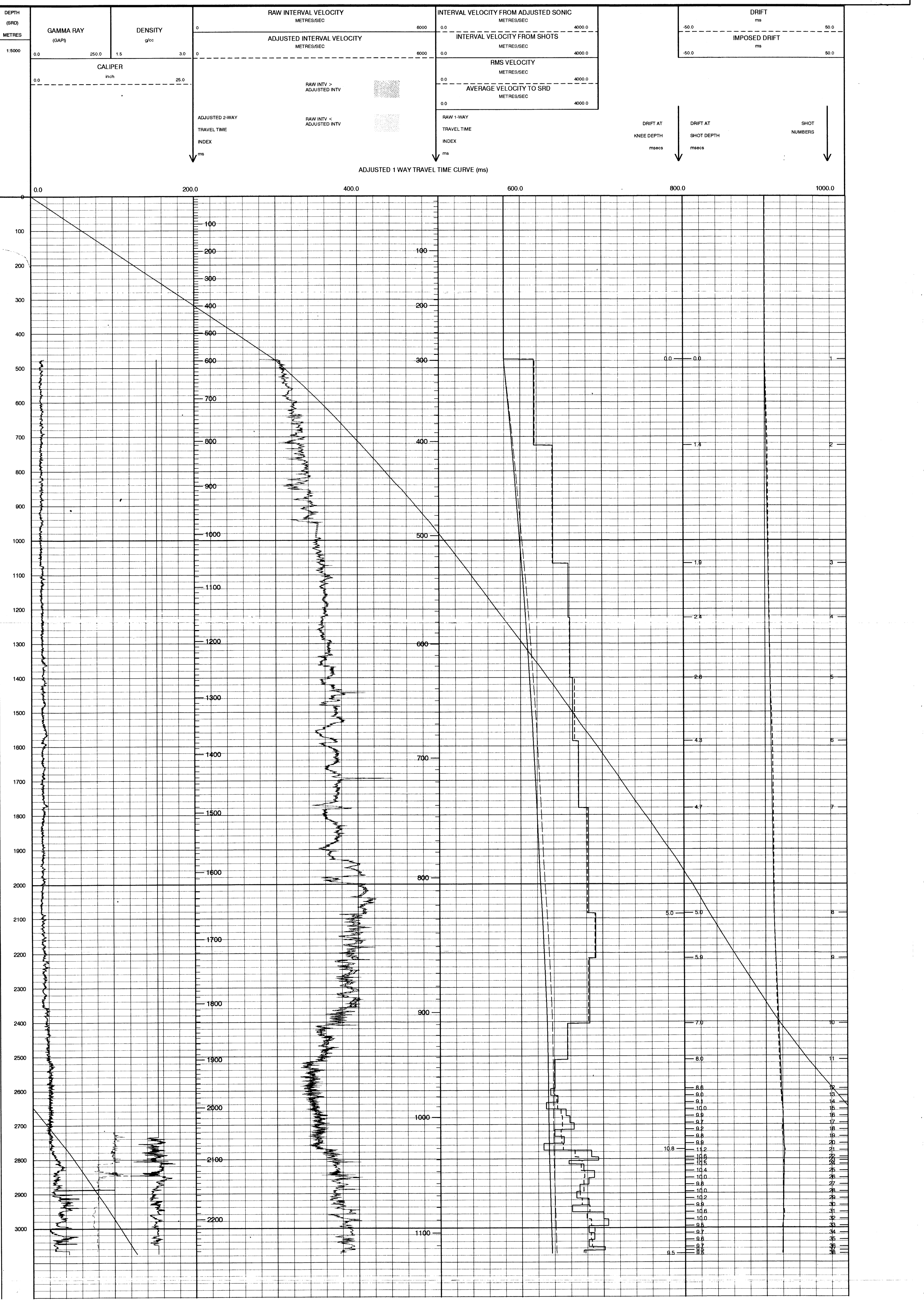
Total Number of Levels: 37

Run	Date	Tool Type	Filter	Depth	SRD	Casing Size	Top Depth	Bottom Depth
1	01-04-94	ARABIST		8.875 M			2792 M	3069 M
1	01-04-94	LDL CHL		9.975 M			2790 M	3067 M
1	06-04-94	SR M		SR M		5.8 M BELOW HSL	290 DECO	290 DECO
1	06-04-94	SR M		SR M		10.8 M BELOW HSL	290 DECO	290 DECO

REMARKS

FOLD HERE The well name, location and borehole reference data were furnished by the customer.

All interpretations are opinions based on inferences from electrical or other measurements and we cannot, and do not guarantee the accuracy or correctness of any interpretations, and we shall not, except in the case of gross or willful negligence on our part, be liable or responsible for any loss, costs, damages or expenses incurred or sustained by anyone resulting from any interpretations made by any of our officers, agents or employees. These interpretations are also subject to Clause 4 of our General Terms and Conditions as set out in our current Price Schedule.



COMPANY ESSO AUSTRALIA LTD.
 FIELD BLACKBACK
 WELL BLACKBACK #3
 COUNTRY AUSTRALIA

