

# SEISMIC CALIBRATION LOG

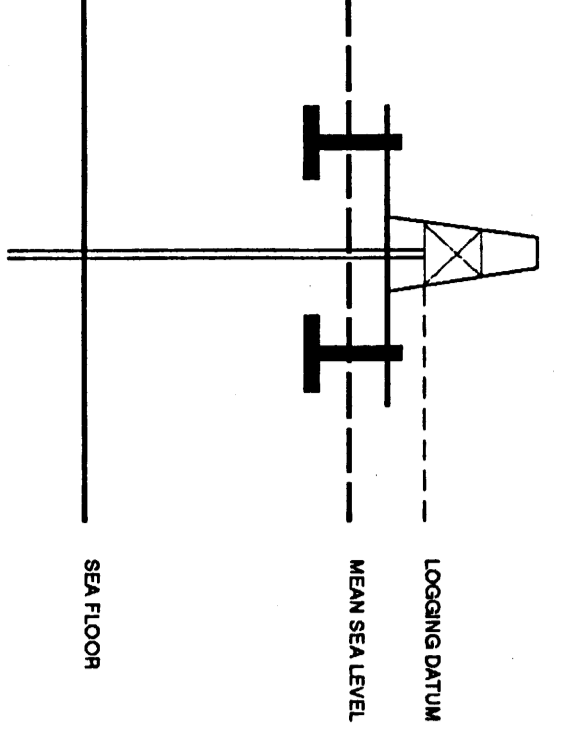
(Adjusted Continuous Velocity Log)

Company: ESSO AUSTRALIA LTD  
 Well: BLACKBACK2  
 Field: BLACKBACK  
 Country: AUSTRALIA

Reference No: 550835 Interval: 3142.00 to 1152.00  
 Date Logged: 5-10-92 Date Processed: 20-10-92  
 Location: 38 32 28.23 S 148 02 36.09 E  
 Elevation: NB: 22.30 DF: 22.00 GL: -370.40  
 Permanent Datum: MSL Depth Units: METRES

FIELD RECORDING: Engineer: M. HILLING Location: SC 4  
 COMPUTER: Analyst: T. BOWMAN Charts: SVJ Baseline: 20.0  
 ELEVATION ABOVE MEAN SEA LEVEL

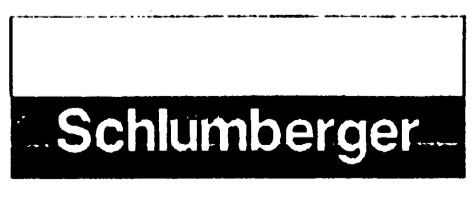
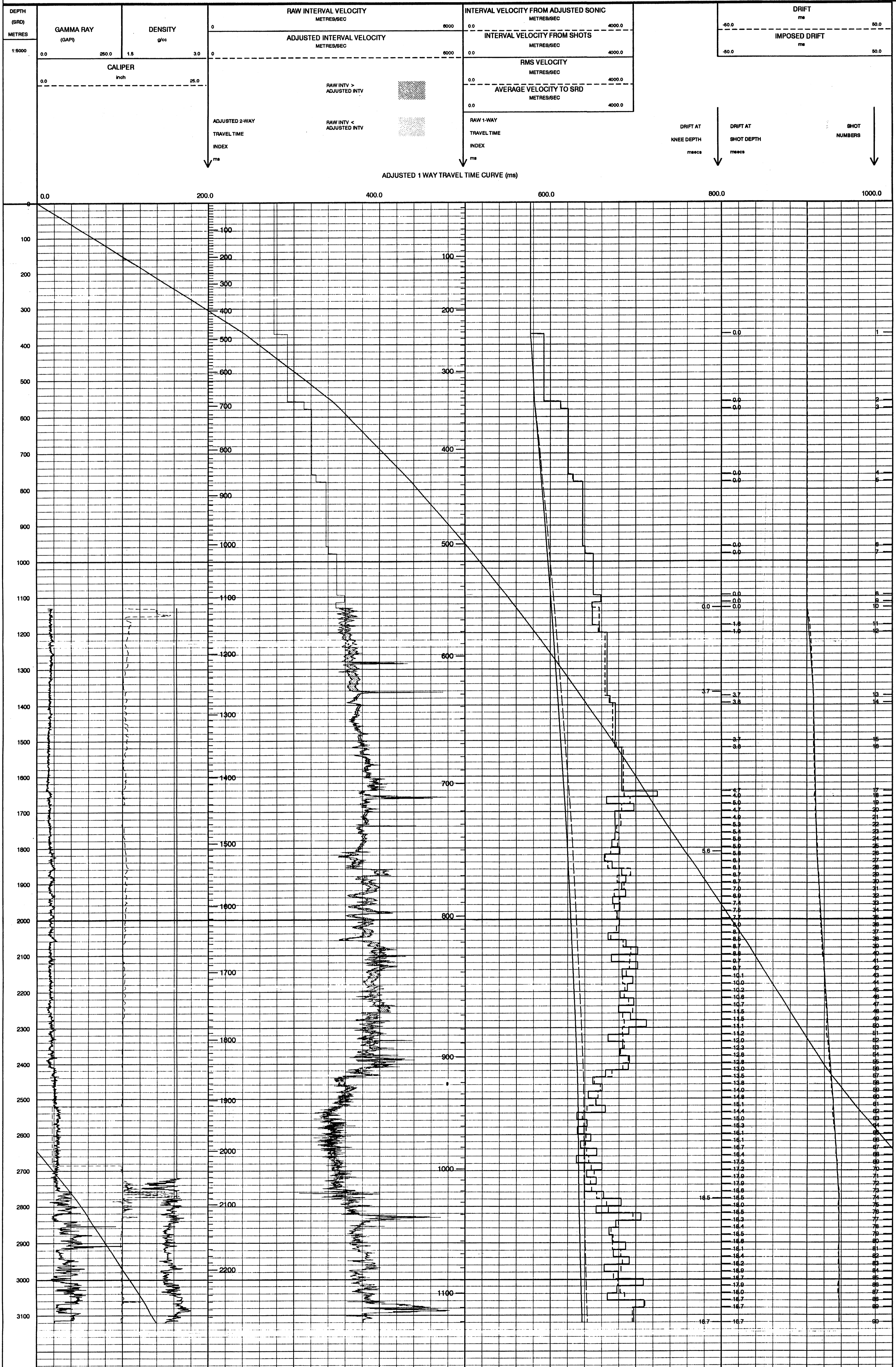
Logging Datum: 22.00  
 Seismic Reference Datum: 0.00



Total Number of Levels: 88

Depth Reference	Time Reference	Run	Date	Tool Type	Interval	Depth	Change Size	Top Depth	Bottom Depth
1	5-10-92	AS						314.0	1152.0
2	11-10-92	SA 4						110	110

The well name, location and borehole reference data were furnished by the customer.  
 All interpretations are opinions based on inferences from electrical or other measurements and we cannot, and do not guarantee the accuracy or correctness of any interpretations, and we shall not, except in the case of gross or willful negligence on our part, be liable or responsible for any loss, costs, damages or expense incurred or sustained by anyone resulting from any interpretations made by any of our officers, agents or employees. These interpretations are also subject to Clause 4 of our General Terms and Conditions as set out in our current Price Schedule.



COMPANY ESSO AUSTRALIA LTD  
 FIELD BLACKBACK  
 WELL BLACKBACK 2  
 COUNTRY AUSTRALIA