

**Schlumberger**  
SYDNEY LOG  
INTERPRETATION  
CENTRE

# GEOGRAM\*

(Synthetic Seismogram)

\* A Mark of Schlumberger

Company: ESSO AUSTRALIA LTD.  
Well: BLACKBACK 1 (ST-1/ST-2)  
Field: WILDCAT  
Country: AUSTRALIA  
Reference No: 56460 Interval: 3905.00 to 675.00  
Date Logged: 16/6/89 Date Processed: 20/7/89  
Location: 38 33.37' S 147 33.42.68' E  
Elevations: KB: 2100 DF: 2070 GL: -418.00  
Permanent Datum: MSL Depth Units: METRES

### LOG INFORMATION

FIELD RECORDING: Engineer: G. SMITH Location: Program Version: 322  
COMPUTATION: Analyst: Z. KATEJIS Centre: SVJ Baseline: 18.900X3  
Logging Datum: ELEVATION ABOVE MEAN SEA LEVEL  
2100  
Sonic Reference Datum: 0.00  
Sonic Calibration By Check Shots: YES Sonic Edited By Analyst: YES  
Two-Way Time Sample Interval: 2 ms Environment:

True Vertical Depth Corrections Applied: YES  
Source of True Vertical Depth Data: DPMETER  
Maximum Hole Deviation: 39 DEG

Run	Date	Tool Type	Bit Size/Depth	Casing Size/Depth	Top Depth	Bottom Depth
VSP	Run	Gun	Hydro	Gun	Hydro	Gun
		Offset	Offset	Elevation	Elevation	Atmuth
						Hydro

**GEOGRAM MODEL ASSUMPTIONS**  
Equal time slice model of horizontal plane layers  
Plane acoustic waves at normal incidence.  
No intrinsic attenuation.  
**POLARITY**  
An upgoing wave, reflected by an increase in acoustic impedance with depth, is displayed as a white trough under normal polarity.  
**SIGNATURES**  
All signatures displayed in the Geogram results correspond to a wavelet convolved with a reflection coefficient of -0.5 (A decrease in acoustic impedance with depth).

PART B  
25 HERTZ ZERO PHASE

FOLD HERE

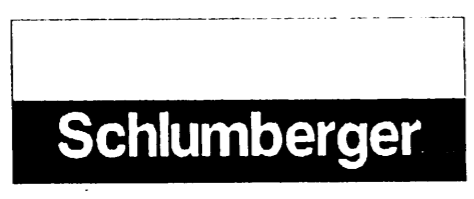
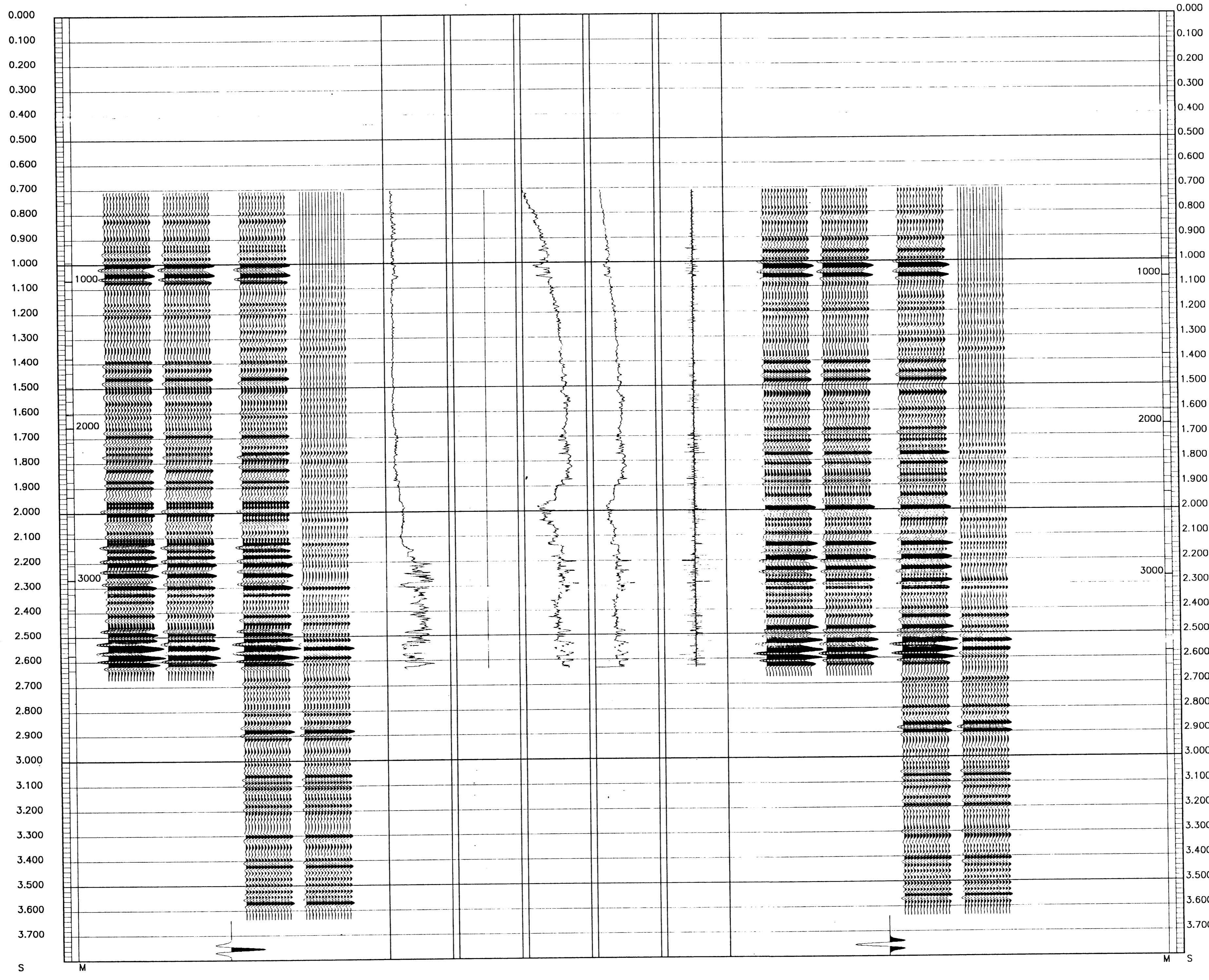
The well name, location and borehole reference data were furnished by the customer.

All interpretations are opinions based on inferences from electrical or other measurements and we cannot, and do not guarantee the accuracy or correctness of any interpretations, and we shall not, except in the case of gross or willful negligence on our part, be liable or responsible for any loss, costs, damages or expenses incurred or sustained by anyone resulting from any interpretations made by any of our officers, agents or employees. These interpretations are also subject to Clause 4 of our General Terms and Conditions as set out in our current Price Schedule.

CLIENT = ESSO AUSTRALIA LTD.  
FIELD = WILDCAT  
WELL = BLACKBACK 1 (ST-1/ST-2)

**\*\* GEOGRAM \*\***  
**25 HERTZ ZERO PHASE**  
**RICKER WAVELET**  
**BLACKBACK 1**

PRIMARIES AND MULTIPLES REVERSE POLARITY
PRIMARIES WITH TRANSMISSION LOSS REVERSE POLARITY
PRIMARIES REVERSE POLARITY
REFLECT ON
ACUSTIC IMPEDANCE
SONIC
DENSITY
GAMMA RAY
MULTIPLS ONLY NORMAL POLARITY
PRIMARIES AND MULTIPLES NORMAL POLARITY
PRIMARIES WITH TRANSMISSION LOSS NORMAL POLARITY
PRIMARIES NORMAL POLARITY



COMPANY ESSO AUSTRALIA LTD.  
FIELD WILDCAT  
WELL BLACKBACK 1 (ST-1/ST-2)  
COUNTRY AUSTRALIA