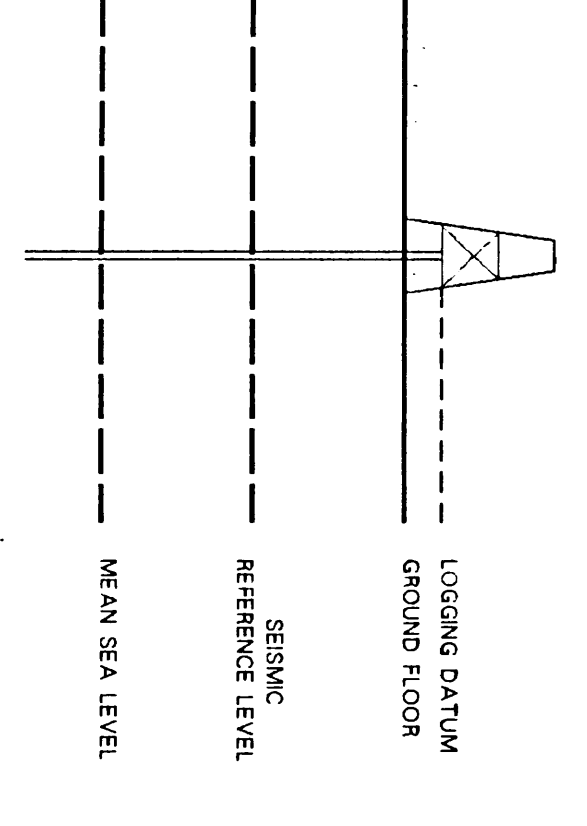


Schlumberger
SYDNEY LOG INTERPRETATION CENTRE

SEISMIC CALIBRATION LOG

(Adjusted Continuous Velocity Log)

Company: ESSO AUSTRALIA LTD.
Well: BLACKBACK 1 (ST-1/ST-2)
Field: WILDCAT
Country: AUSTRALIA
Reference No: 56460 Interval: 3905.00 to 575.00
Date Logged: 16/6/89 Date Processed: 20/7/89
Location: 38 33.37' S 147 39.42.68' E
Elevations: KB: 2100 DF: 2070 GL: -418.00
Permanent Datum: MSL Depth Units: METRES
FIELD RECORDING: Engineer: G. SMITH Location: Program Version: 32.2
COMPUTATION: Analyst: Z. KATZELS Centre: STJ Bandwidth: 16.000/3
Logging Datum: 2100
Sonic Reference Datum: 0.00
ELEVATION ABOVE MEAN SEA LEVEL



Total Number of Levels: 17
Depth Reference: SRD
Time Reference: SRD

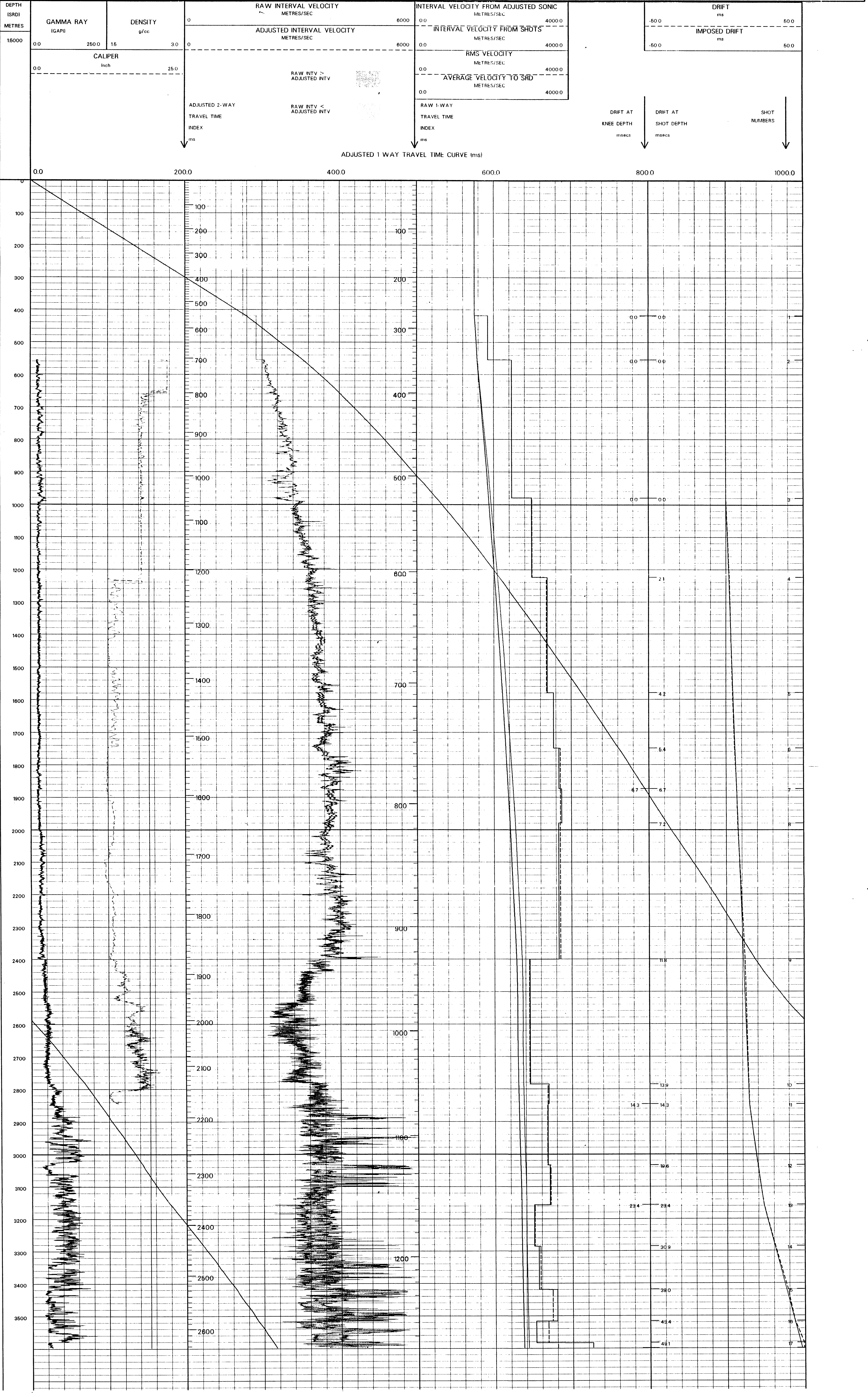
Run	Date	Tool Type	Bit Size/Depth	Casing Size/Depth	Top Depth	Bottom Depth
1		Gun	Hydro	Gun	Hydro	Gun
2		Gun	Hydro	Gun	Hydro	Gun
3		Gun	Hydro	Gun	Hydro	Gun
4		Gun	Hydro	Gun	Hydro	Gun
5		Gun	Hydro	Gun	Hydro	Gun
6		Gun	Hydro	Gun	Hydro	Gun
7		Gun	Hydro	Gun	Hydro	Gun
8		Gun	Hydro	Gun	Hydro	Gun
9		Gun	Hydro	Gun	Hydro	Gun
10		Gun	Hydro	Gun	Hydro	Gun
11		Gun	Hydro	Gun	Hydro	Gun
12		Gun	Hydro	Gun	Hydro	Gun
13		Gun	Hydro	Gun	Hydro	Gun
14		Gun	Hydro	Gun	Hydro	Gun
15		Gun	Hydro	Gun	Hydro	Gun
16		Gun	Hydro	Gun	Hydro	Gun
17		Gun	Hydro	Gun	Hydro	Gun

REMARKS

SPACE OF ST-1 AND ST-2 LOGS INDEXED TO TD. GUN AND HYDROPHONE CONFIGURATION INCLUDED IN REPORT. PART B

The well name, location, and depth reference data were furnished by the customer.

All interpretations are opinions based on inferences from electrical or other measurements and we cannot and do not guarantee the accuracy or correctness of any interpretations, and we shall not, except in the case of gross or willful negligence on our part, be liable or responsible for any loss, costs, damages or expenses incurred or sustained by anyone resulting from any interpretations made by any of our officers, agents or employees. These interpretations are also subject to Clause 4 of our General Terms and Conditions as set out in our current Price Schedule.



COMPANY ESSO AUSTRALIA LTD.
FIELD WILDCAT
WELL BLACKBACK 1 (ST-1/ST-2)
COUNTRY AUSTRALIA