

Plate 9: 4110 m (Campanian Siltstone). **Reflected Light**
Dispersed organic matter in this siltstone fragment consists largely of inertinite (white). Exinite (brown) is rare.
Field Dimensions: 0.26 x 0.18 mm.

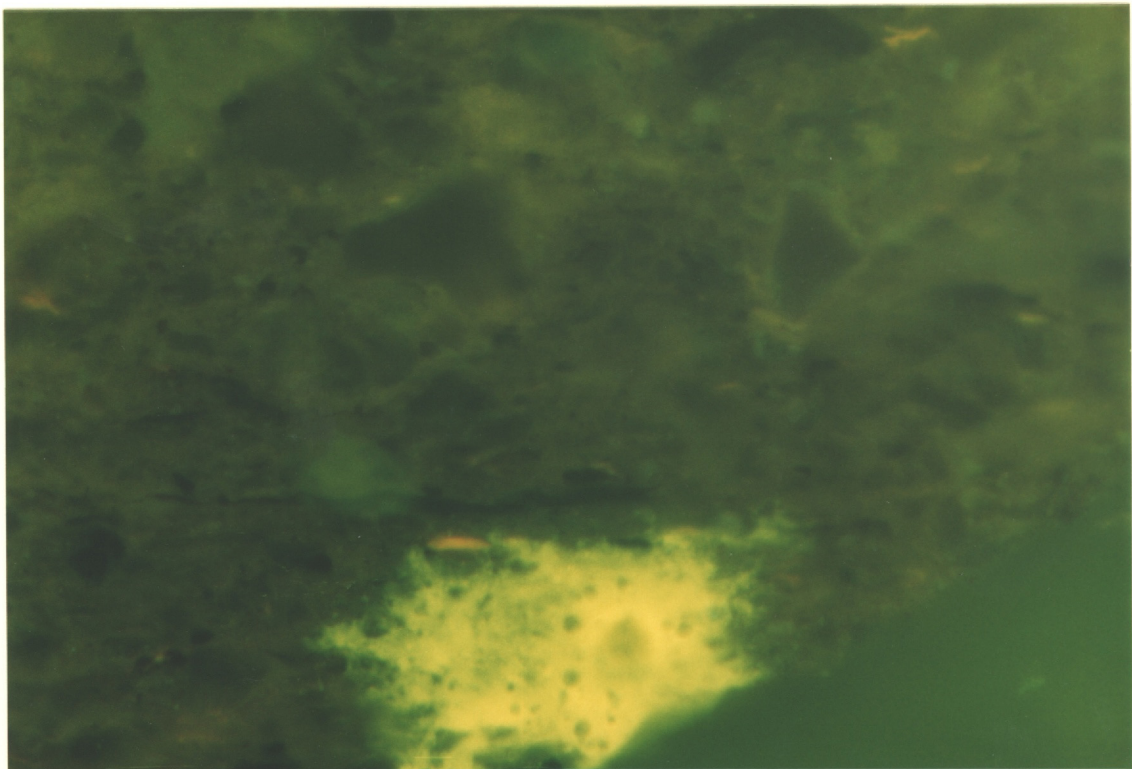


Plate 10: Same Field as above. **Fluorescence Mode**
Oil (intense yellow; bottom centre) is clearly distinguished in fluorescence mode. Exinite (orange) is liptodetrinite.