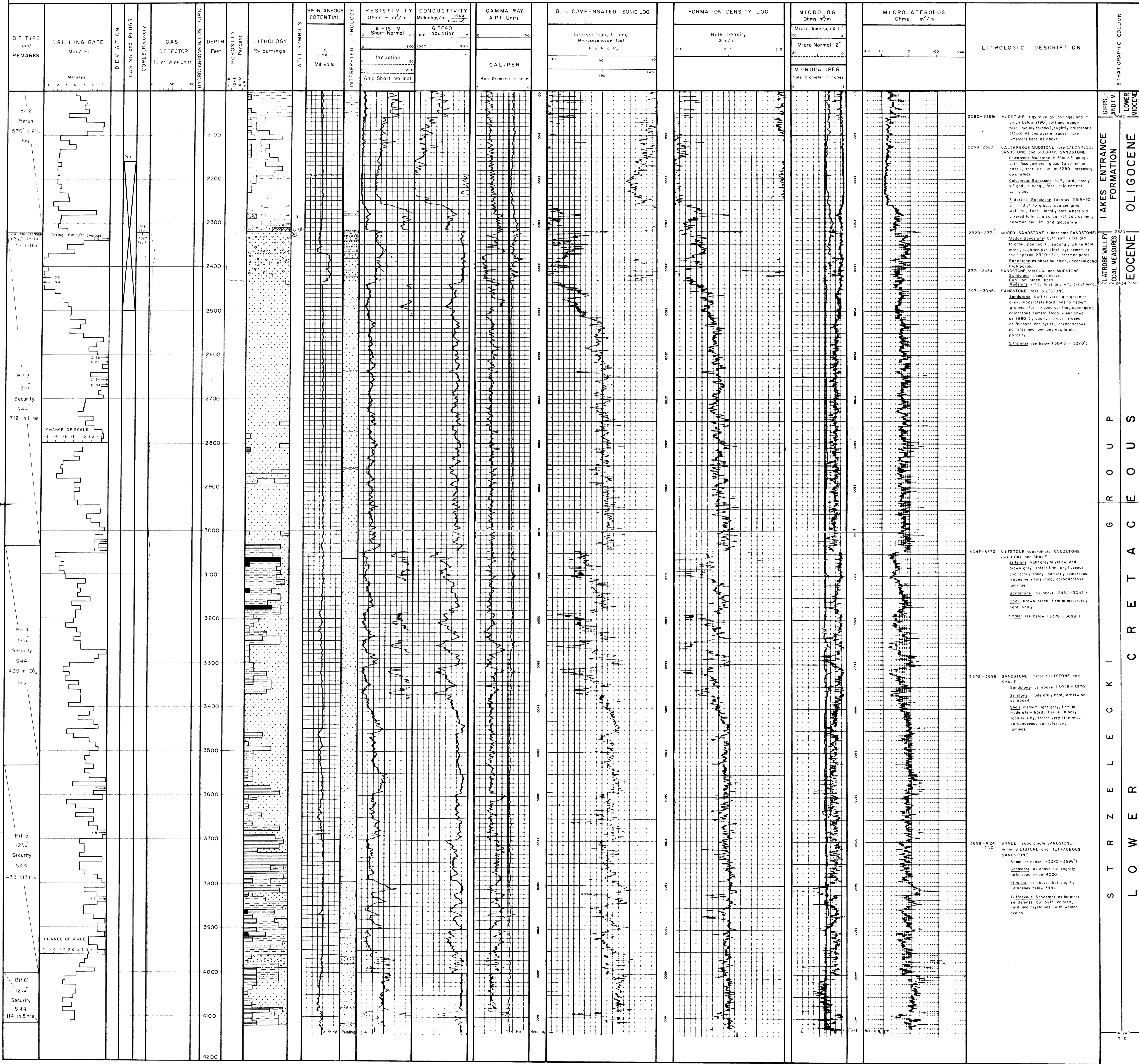


COMPOSITE WELL LOG ALBATROSS No.1

2000 - 4124'

DEPT. NAT. RES. & ENV.
PE603291



STRATIGRAPHIC COLUMN
 GIPPSLAND FM. LOWER MIOCENE
 LAKES ENTRANCE FORMATION
 COAL MEASURES
 EOCENE
 G R O U P
 C R E T A C E O U S
 S T R Z E L E C K I
 LOWER MIOCENE

2060-2299' MUDSTONE, grey to yellow (orange) and grey below 2190', soft and puggy, fossiliferous (mainly forams), slightly calcareous, glauconitic and pyrite traces, rare limestone beds as above.
 2299-2320' CALCAREOUS MUDSTONE, rare CALcareous SANDSTONE and SIDERITIC SANDSTONE. Calcareous Mudstone, buff to grey, silty, soft, fine, calcareous, glauconitic, silty at base, soft at top or 2280', increasing downwards.
 2320-2371' MUDDY SANDSTONE, subordinate SANDSTONE. Muddy Sandstone, buff, soft, very grey to grey, poor sort, subang. white to grey, silty, trace pyrite, calc cement at top - approx 2320-2371', intermed. poros. Sandstone as above but clean, unconsolidated, high poros.
 2371-2434' SANDSTONE, rare COAL and MUDSTONE. Sandstone, clean, as above. Coal, thin black, hard. Mudstone, grey to grey, firm, grey to micaceous.
 2434-3045' SANDSTONE, rare SILTSTONE. Sandstone, buff to very light greenish grey, moderately hard, fine to medium grained, fair to good sorting, subangular, calcareous cement (locally enriched at 2880'), quartz, lithic, traces of feldspar and pyrite, carbonaceous particles and laminae, negligible porosity. Siltstone, see below (3045 - 3370').
 3045-3370' SILTSTONE, subordinate SANDSTONE, rare COAL and SHALE. Siltstone, light grey to yellow and brown grey, soft to firm, argillaceous and locally sandy, partially calcareous, traces very fine mica, carbonaceous laminae. Sandstone, as above (2434-3045'). Coal, brown black, firm to moderately hard, shaly. Shale, see below (3370 - 3698').
 3370-3698' SANDSTONE, minor SILTSTONE and SHALE. Sandstone, as above (3045 - 3370'). Siltstone, moderately hard, otherwise as above. Shale, medium light grey, firm to moderately hard, fissile, blocky, locally silty, traces very fine mica, carbonaceous particles and laminae.
 3698-4124' SHALE, subordinate SANDSTONE, minor SILTSTONE and TUFFACEOUS SANDSTONE. Shale, as above (3370 - 3698'). Sandstone, as above, of slightly tuffaceous below 4000'. Siltstone, as above, but slightly tuffaceous below 3984'. Tuffaceous Sandstone, as for other sandstones, but buff colored, hard and crystalline, with waxy grains.

