

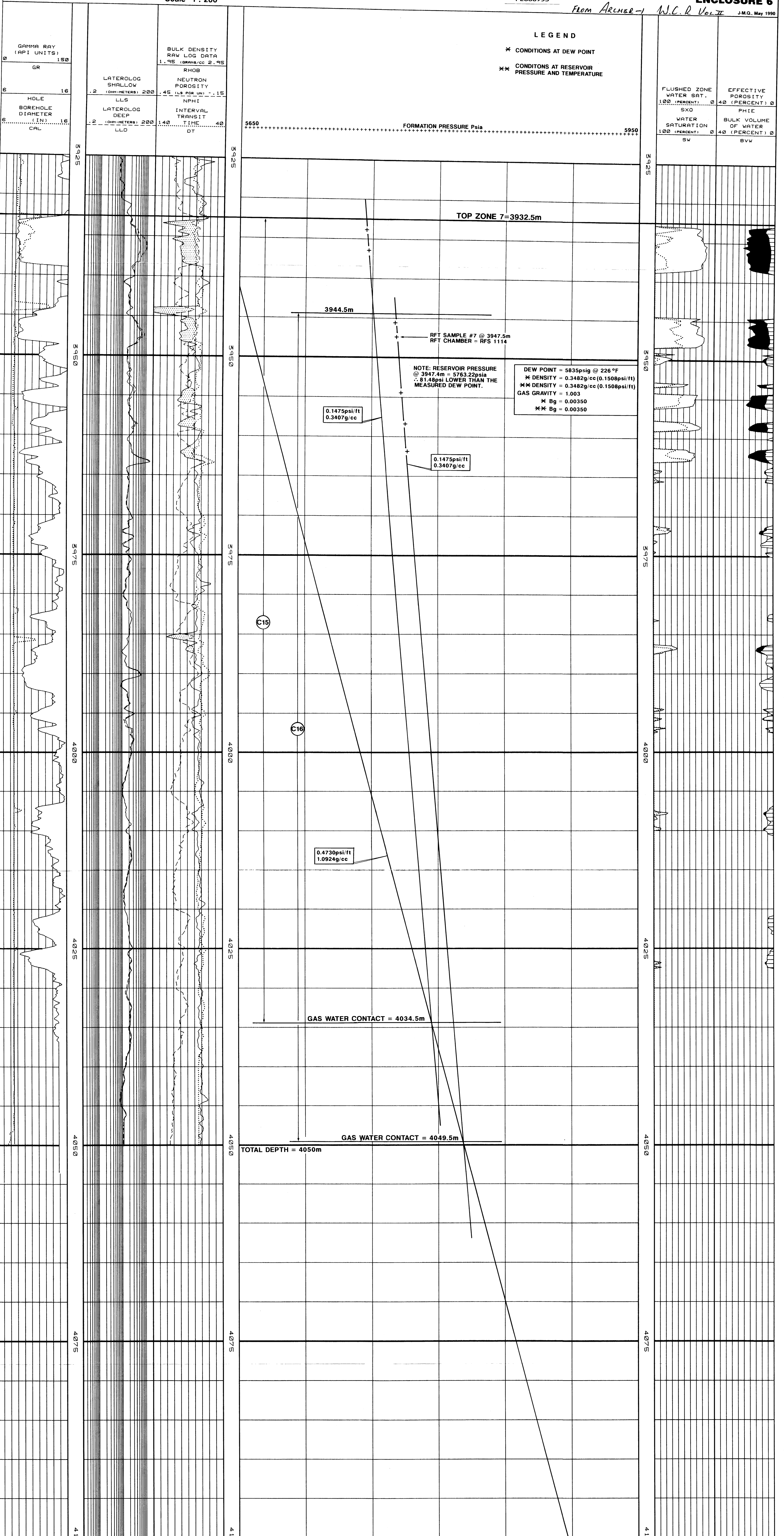


ARCHER-1 , ZONE 7 : 3932.5-4050 m (TD)

RFT RESULTS
Scale 1 : 200

DEPT. NAT. RES. & ENV.
PE600953

ENCLOSURE 6
FROM ARCHER-1 W.C.R. VOLT J.M.Q., May 1990



LEGEND

- * CONDITIONS AT DEW POINT
- ** CONDITIONS AT RESERVOIR PRESSURE AND TEMPERATURE

FLUSHED ZONE WATER SAT. 100 (PERCENT) @ SXO	EFFECTIVE POROSITY 40 (PERCENT) @ PHIE
WATER SATURATION 100 (PERCENT) @ SW	BULK VOLUME OF WATER 40 (PERCENT) @ BVW

NOTE: RESERVOIR PRESSURE @ 3947.4m = 5763.22psia
∴ 81.48psi LOWER THAN THE MEASURED DEW POINT.

DEW POINT = 5835psig @ 226 °F
* DENSITY = 0.3482g/cc (0.1508psi/ft)
** DENSITY = 0.3482g/cc (0.1508psi/ft)
GAS GRAVITY = 1.003
* Bg = 0.00350
** Bg = 0.00350

0.1475psi/ft
0.3407g/cc

0.1475psi/ft
0.3407g/cc

0.4730psi/ft
1.0924g/cc

GAS WATER CONTACT = 4034.5m

GAS WATER CONTACT = 4049.5m

TOTAL DEPTH = 4050m

C15

C16