



Company : 3D Oil Ltd

Well : West Seahorse-3

Interval : 71.00 - 1044.72 meters

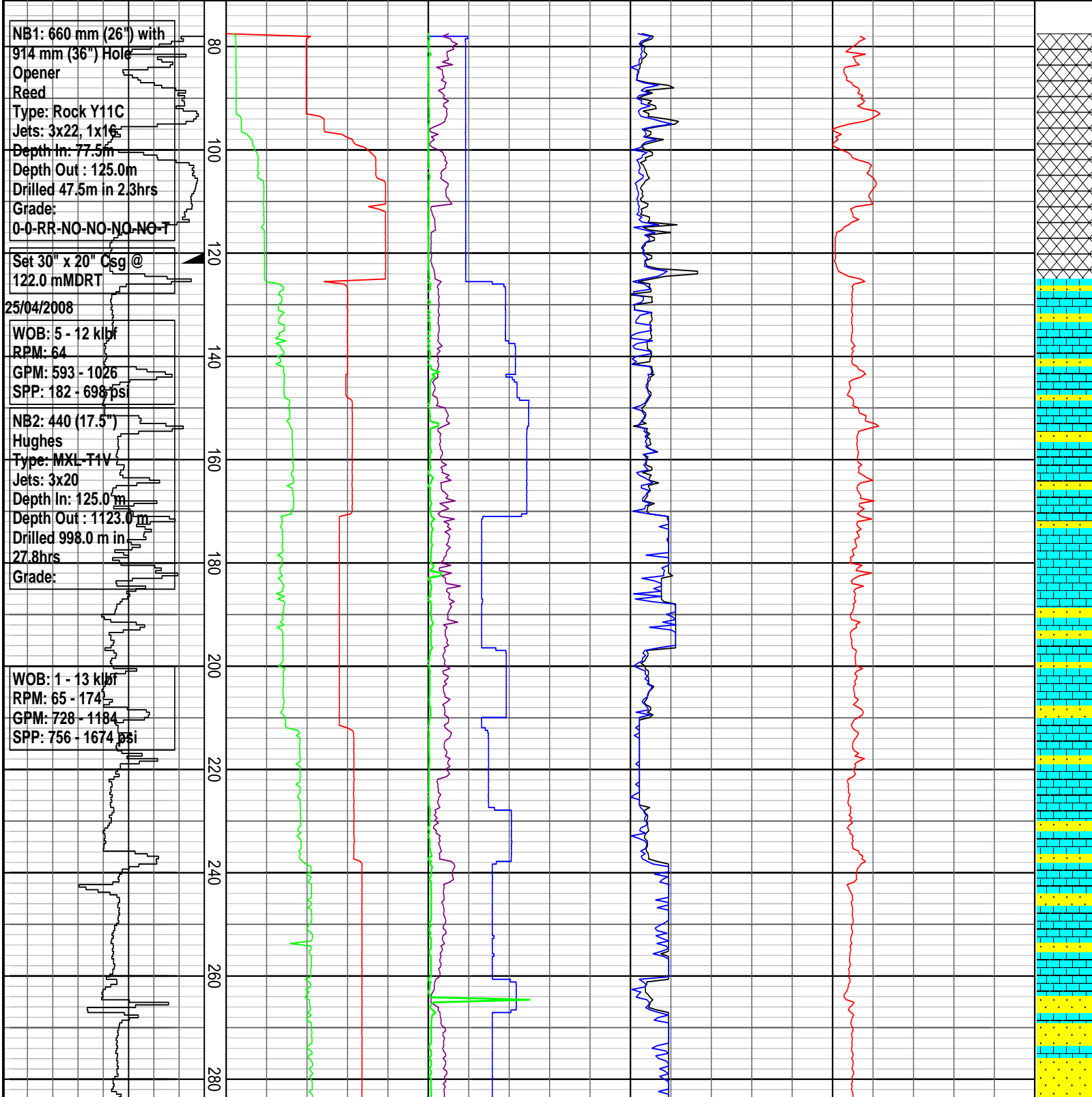
Created : 27/Apr/2008 11:45:38 PM



INTEQ

DRILLING DATA PLOT

ROP (m/hr) 400 375 350 325 300 275 250 225	FLOW IN (gpm) 300 600 900 1200 1500	RPM Avg 70 140 210 280 350	TORQUE Max (kft-lb) 5 10 15 20 25	DXC 0.3	3	INTERPRETED LITHOLOGY
ROP (m/hr) 200 175 150 125 100 75 50 25	STANDPIPE (psi) 1000 2000 3000 4000 5000	WOB Avg (klbs) 16 32 48 64 80	TORQUE Avg (kft-lb) 5 10 15 20 25			
		MSE (MPa) 100 200 300 400 500				



NB1: 660 mm (26") with 914 mm (36") Hole Opener Reed
 Type: Rock Y11C
 Jets: 3x22, 1x16
 Depth In: 77.5m
 Depth Out: 125.0m
 Drilled 47.5m in 2.3hrs
 Grade: 0-0-RR-NO-NO-NO-NO-T

Set 30" x 20" Csg @ 122.0 mMDRT
 25/04/2008

WOB: 5 - 12 klbf
 RPM: 64
 GPM: 593 - 1026
 SPP: 182 - 698 psi

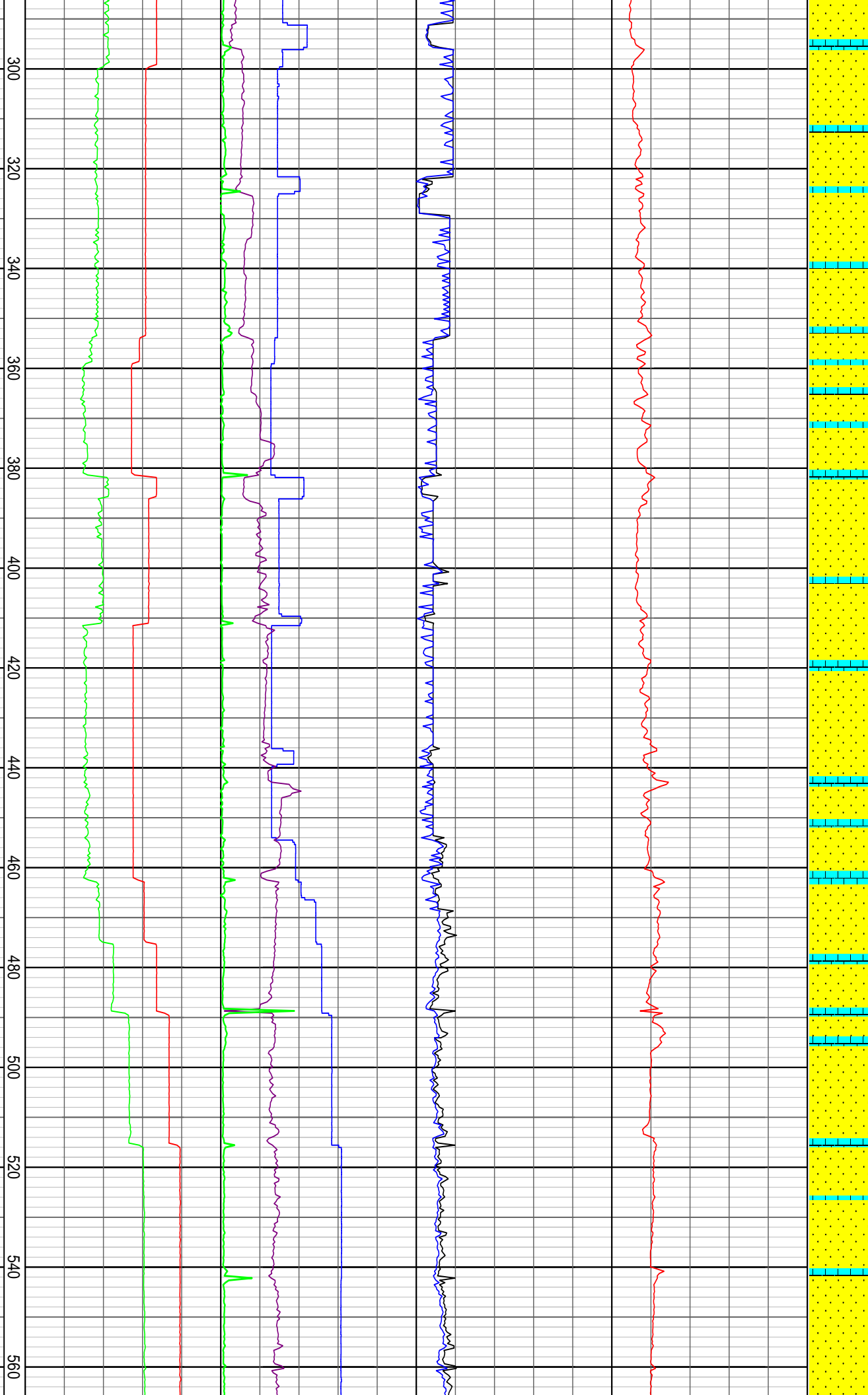
NB2: 440 (17.5") Hughes
 Type: MXL-T1V
 Jets: 3x20
 Depth In: 125.0m
 Depth Out: 1123.0m
 Drilled 998.0m in 27.8hrs
 Grade:

WOB: 1 - 13 klbf
 RPM: 65 - 174
 GPM: 728 - 1184
 SPP: 756 - 1674 psi

WOB: 1 - 10 klbf
RPM: 92 - 155
GPM: 839 - 1009
SPP: 1350 - 2152 psi

WOB: 6 - 22 klbf
RPM: 0 - 40
GPM: 815 - 1010
SPP: 1415 - 2130 psi

WOB: 12 - 32 klbf
RPM: 0 - 70
GPM: 825 - 1010
SPP: 1470 - 2260 psi



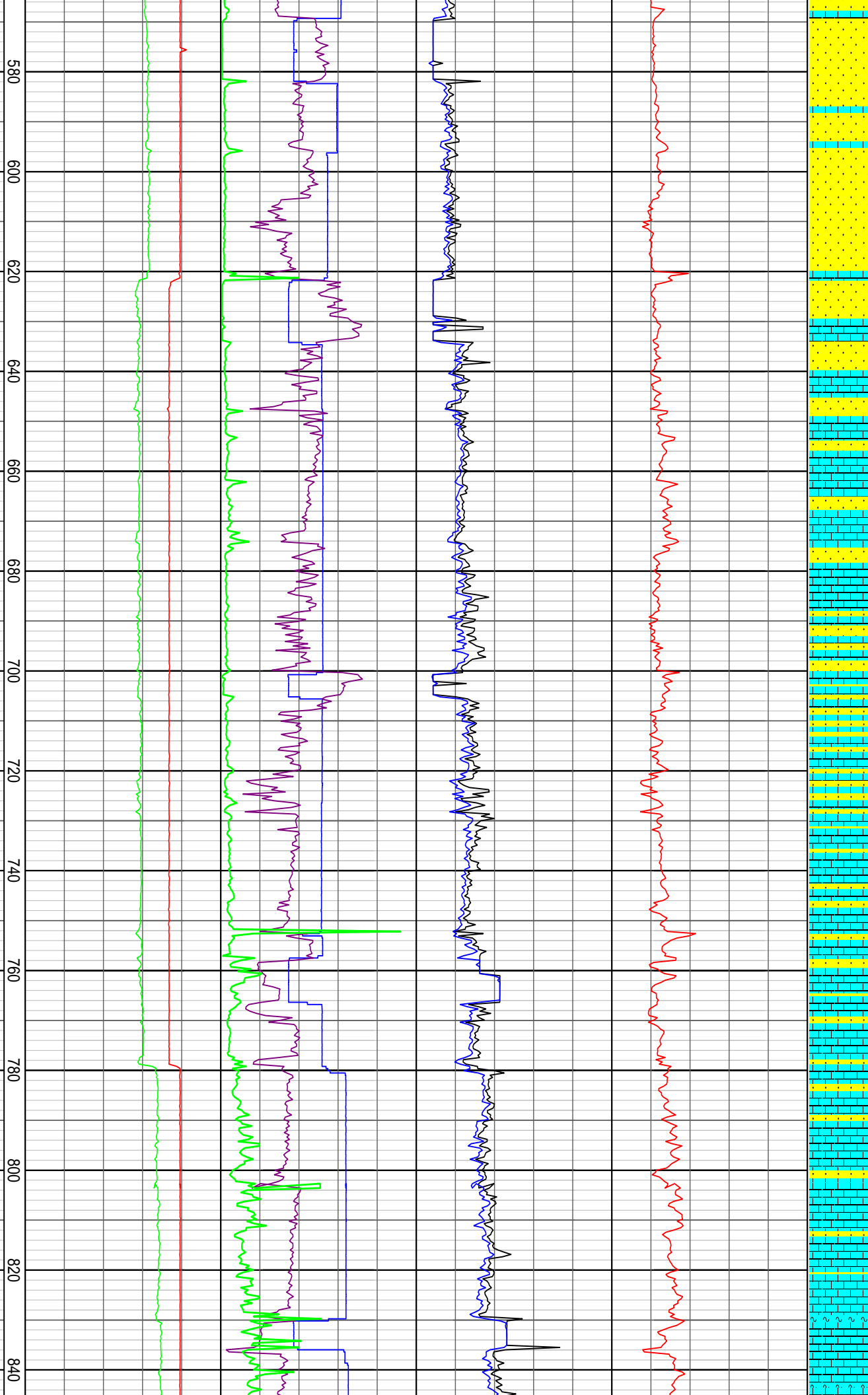
WOB: 2 - 44 klf
RPM: 0 - 85
GPM: 1005 - 1195
SPP: 2200 - 3145 psi

WOB: 12 - 60 klf
RPM: 0 - 75
GPM: 1090 - 1190
SPP: 2770 - 3230 psi

WOB: 9 - 58 klf
RPM: 120 - 183
GPM: 1100 - 1108
SPP: 2823 - 2991 psi

WOB: 2 - 38 klf

27/04/2008

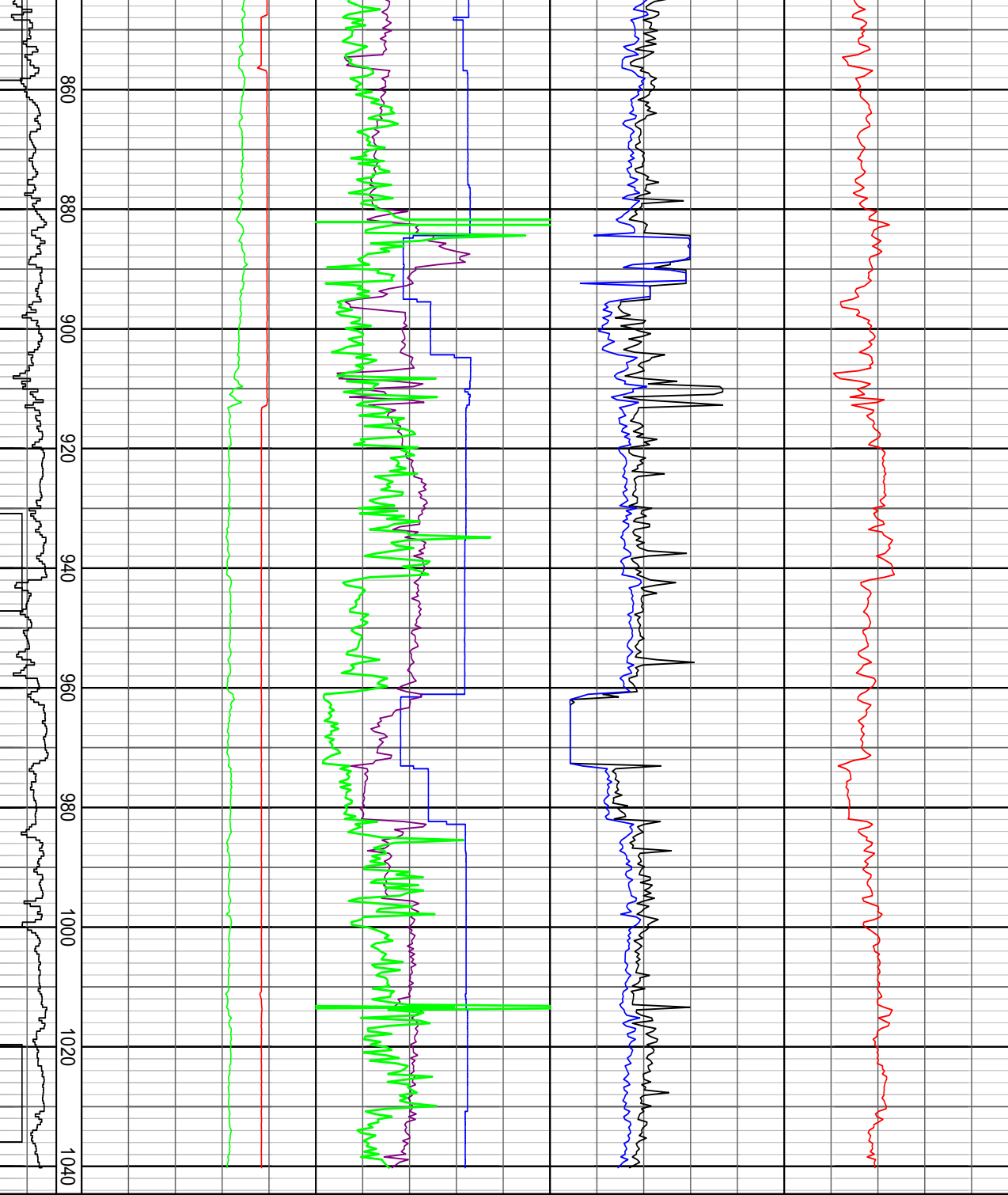


WOB: 2 - 52 klbf
 RPM: 122 - 188
 GPM: 1102 - 1193
 SPP: 2860 - 3494 psi

WOB: 7 - 52 klbf
 RPM: 0 - 100
 GPM: 1125 - 1190
 SPP: 3120 - 3540 psi

WOB: 10 - 37 klbf
 RPM: 0 - 100
 GPM: 1140 - 1155
 SPP: 3075 - 3265 psi

28/04/2008



DRILLING DATA PLOT

ROP (m/hr) 225 250 275 300 325 350 375 400 ROP (m/hr) 25 50 75 100 125 150 175 200	TVD meters 1:1000	FLOW IN (gpm) 300 600 900 1200 1500	RPM Avg 70 140 210 280 350	TORQUE Max (kft-lb) 5 10 15 20 25	DXC 0.3 3	INTERPRETED LITHOLOGY
		STANDPIPE (psi) 1000 2000 3000 4000 5000	WOB Avg (klbs) 16 32 48 64 80	TORQUE Avg (kft-lb) 5 10 15 20 25		
		MSE (MPa) 100 200 300 400 500				