

WOB: 1 - 13 klbf
 RPM: 65 - 174
 GPM: 728 - 1184
 SPP: 756 - 1674 psi

WOB: 1 - 10 klbf
 RPM: 92 - 155
 GPM: 839 - 1009
 SPP: 1350 - 2152 psi

CALCARENITE: v pl or-wh, hd, f, shl frags, foss, trnsl-trnsp, sbang qtz, calc frags, cal cmt, pr por

Survey @ 182.420 mMDRT
 Incl: 2.72 Azi: 71.56
 TVD: 182.4 m

SANDSTONE: dk olv gy, yel, v crs-gr, f sd, sbang-sbrnnd, rndd i/p, trnsl-trnsp, pr srt, mnr f musc & biot flks, tr blk carb mat, calc cmt, n vis por

Survey @ 210.69 mMDRT
 Incl: 4.37 Azi: 68.83
 TVD: 210.6 m

SANDSTONE: dk olv gy, yel, v crs gr, f sd, sbang-sbrnnd, rndd i/p, trnsl-trnsp, pr srt, mnr f musc & biot flks, tr blk carb mat, calc cmt, n vis por

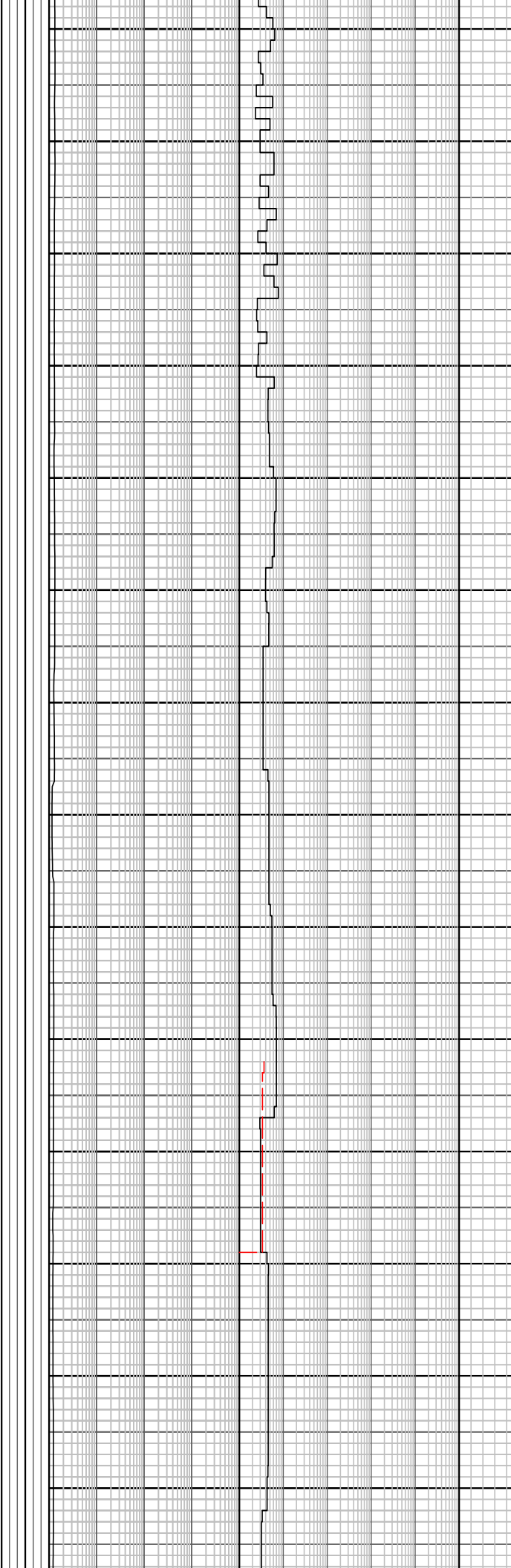
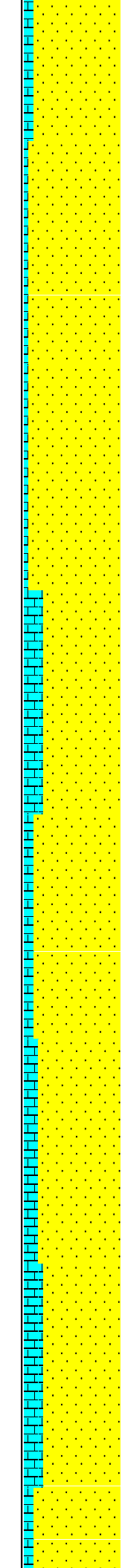
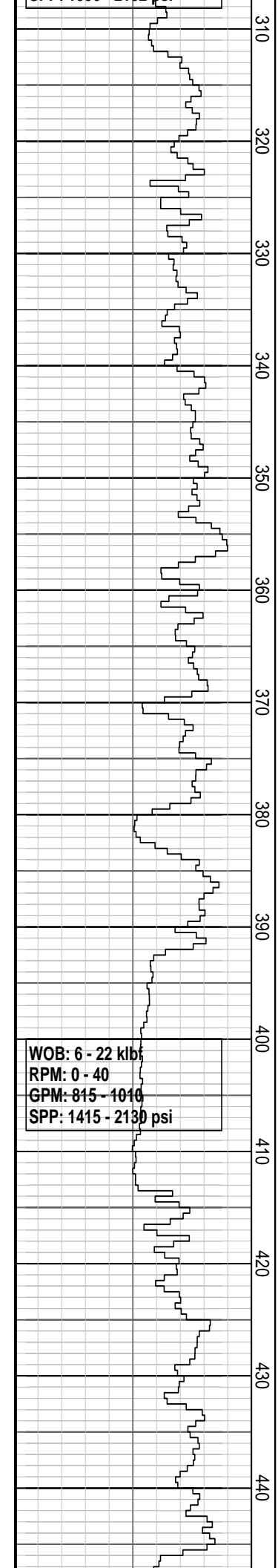
Survey @ 240.38 mMDRT
 Incl: 6.29 Azi: 66.14
 TVD: 240.2 m

CALCARENITE: v pl or-wh, hd, f gr, shl frags, foss, trnsl-trnsp, sbang qtz, calc frags, cal cmt, pr por

Survey @ 269.55 mMDRT
 Incl: 8.46 Azi: 64.16
 TVD: 269.1 m

SANDSTONE: dk olv gy, yel, v crs gr, hd-v hd, f sand, sbang-sbrnnd, rndd i/p, trnsl-trnsp, pr srt, mnr f musc & biot flks, tr blk carb mat, calc cmt, n vis por

Survey @ 299.18 mMDRT
 Incl: 10.92 Azi: 63.65
 TVD: 298.3 m



SANDSTONE: lt olv gy, yel, f - m crs gr, trnsl-trnsp, hd-v hd, sbang-sbrndd, rndd i/p, lse sand, pr srt, mnr f musc & biot flks, tr blk carb mat, v calc, pr cmt, n vis por

Survey @ 328.48 mMDRT
Incl: 13.50 Azi: 62.30
TVD: 326.90 m

CALCARENITE: v pl, or-wh, med hd-hd, f-m shl frags, foss, trnsl-trnsp, sbang qtz, calc frags, cal cmt, pr por

Survey @ 358.59 mMDRT
Incl: 18.96 Azi: 63.33
TVD: 355.80 m

SANDSTONE: lt olv gy-olv gy, yel, trnsl-trnsp, f-m crs gr, crs gr i/p, hd-v hd, sbang-sbrndd, rndd i/p, lse sand, pr srt, tr blk carb mat, v calc, pr cmt, n vis por

CALCARENITE: v pl, or-wh, med hd-hd, f-m shl frags, foss, trnsl-trnsp, sbang qtz, calc frags, cal cmt, pr por

Survey @ 388.46 mMDRT
Incl: 17.84 Azi: 64.65
TVD: 384.30 m

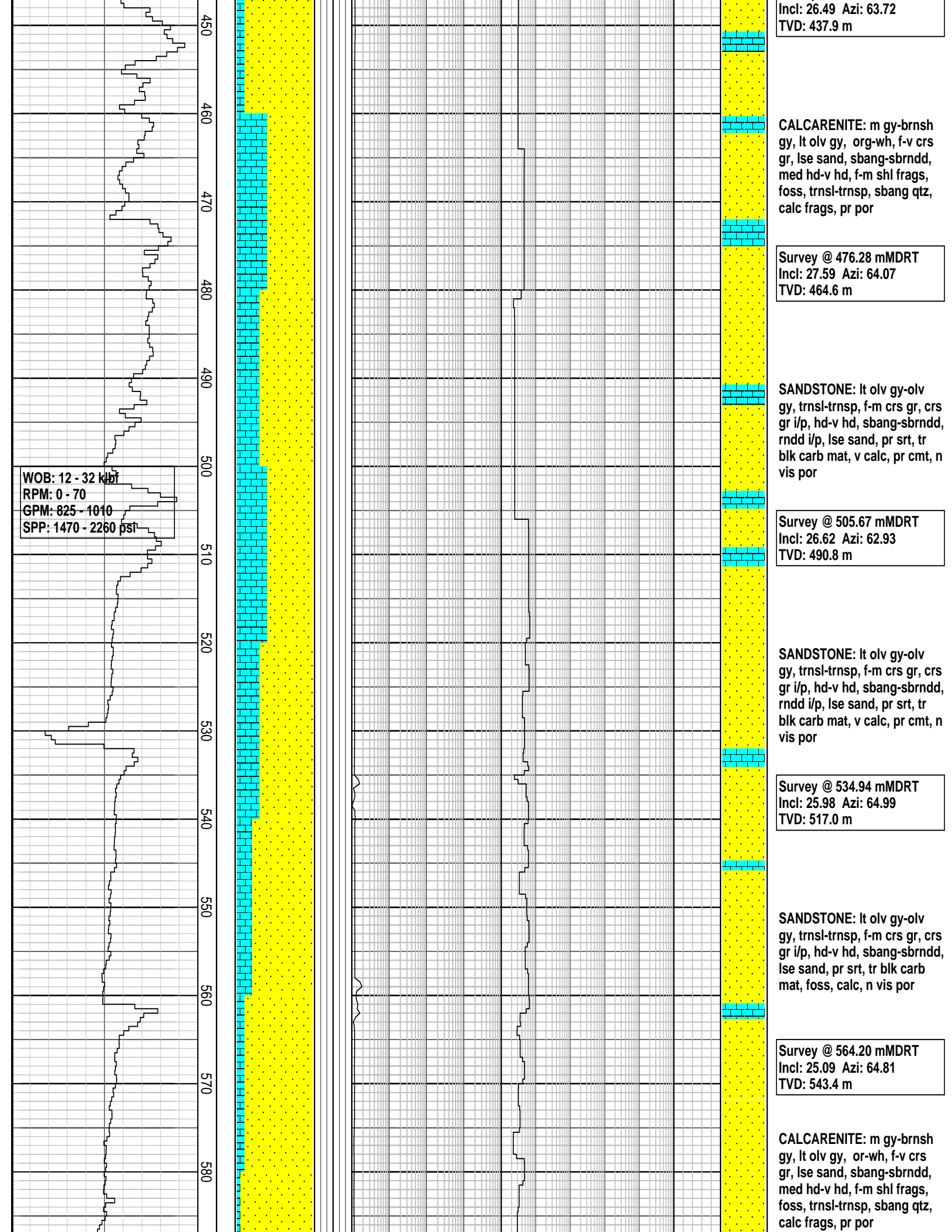
MW: 1.11 sg FV: 40
PV: 4 YP: 14
Gels: 9/13/15 pH: 8

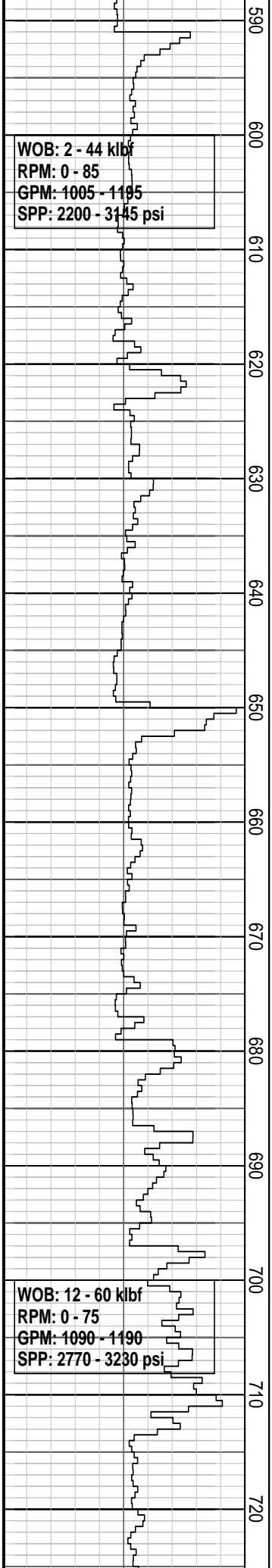
Survey @ 417.21 mMDRT
Incl: 21.76 Azi: 64.94
TVD: 411.4 m

SANDSTONE: lt olv gy-olv gy, yel, trnsl-trnsp, f-m crs gr, crs gr i/p, hd-v hd, sbang-sbrndd, rndd i/p, lse sand, pr srt, tr blk carb mat, v calc, pr cmt, n vis por

Survey @ 446.30 mMDRT

WOB: 6 - 22 kbf
RPM: 0 - 40
GPM: 815 - 1010
SPP: 1415 - 2130 psi





MW: 1.14 sg FV: 41
 PV: 8 YP: 24
 Gels: 10/12/15 pH: 8

SANDSTONE: lt olv gy-olv gy, trnsl-trnsp, f-m crs gr, crs gr i/p, hd-v hd, sbang-sbrndd, lse sand, pr srt, tr blk carb mat, foss, calc, n vis por

Survey @ 622.88 mMDRT
 Incl: 26.34 Azi: 65.72
 TVD: 596.3 m

SANDSTONE: v lt gy-olv gy, trnsl-trnsp, f-v crs gr, hd-v hd, sbang-sbrndd, lse sand, pr srt, tr blk carb mat, foss, calc, n vis por

Survey @ 653.06 mMDRT
 Incl: 26.88 Azi: 63.47
 TVD: 623.3 m

CALCARENITE: m gy-brnsh gy, m olv gy, wh, m-v crs gr, lse sand, sbang-rndd, med hd-hd, shell frags, foss, trnsl-trnsp, lse qtz, calc-v frags, m cmt, pr por

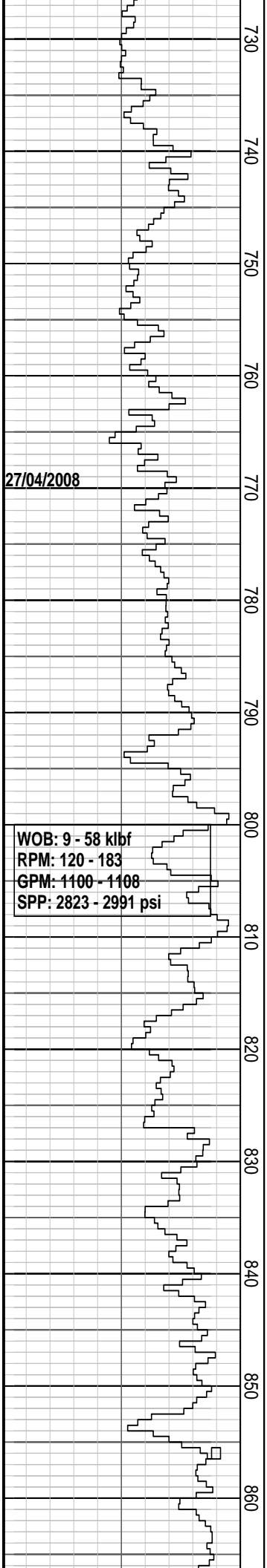
Survey @ 682.2 mMDRT
 Incl: 27.67 Azi: 62.3
 TVD: 649.2 m

SANDSTONE: v lt gy-olv gy, trnsl-trnsp, f-v crs gr, hd-v hd, sbang-sbrndd, lse sand, pr srt, tr blk carb mat, foss, calc, n vis por

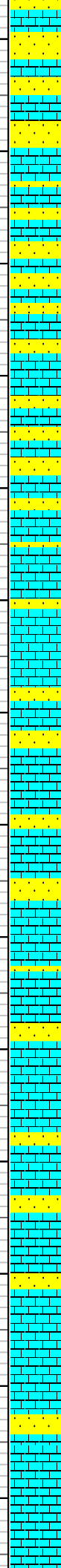
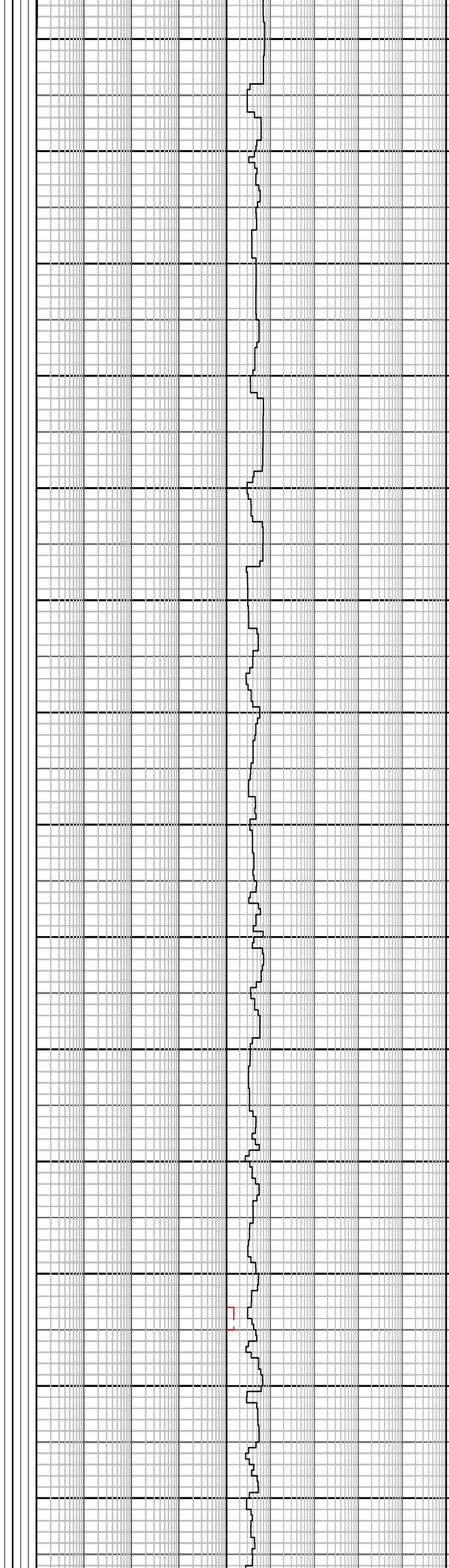
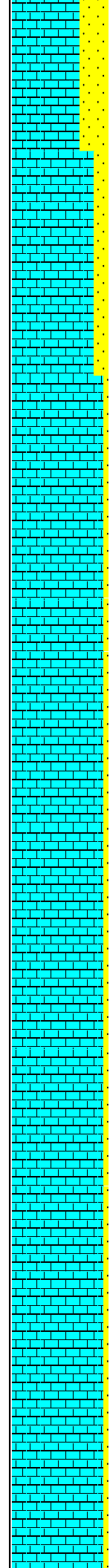
Survey @ 711.65 mMDRT
 Incl: 27.35 Azi: 62.78
 TVD: 675.3 m

SANDSTONE: v lt gy-olv gy, trnsl-trnsp, f-v crs gr, hd-v hd, sbang-sbrndd, lse sand,

pr srt, tr blk carb mat, toss, calc, n vis por



730
740
750
760
770
780
790
800
810
820
830
840
850
860



Survey @ 740.89 mMDRT
Incl: 27.59 Azi: 61.96
TVD: 701.2 m

CALCARENITE: lt olv gy-gnsh gy, trnsl, opq i/p, hd-v hd, fri i/p, calc, v crs gr, qtz gr, ang-sbang, sbrndd i/p, pr srt, tr foss frags, tr glau, calc cmt

MW: 1.10 sg FV: 48
PV: 8 YP: 24
Gels: 10/12/15 pH: 8.5

Survey @ 771.14 mMDRT
Incl: 27.57 Azi: 61.42
TVD: 728.10 m

CALCARENITE: lt olv gy-gnsh gy, dk gy i/p, trnsl, opq i/p, hd-v hd, fri i/p, calc, v crs gr, qtz gr, ang-sbang, sbrndd i/p, pr srt, tr foss frags, tr glau, grad to CLCLT, calc cmt

Survey @ 800.56 mMDRT
Incl: 27.44 Azi: 61.28
TVD: 754.20 m

CALCARENITE: lt olv gy-gnsh gy, dk gy i/p, trnsl, opq i/p, hd-v hd, fri i/p, calc, v crs gr, qtz gr, ang-sbang, sbrndd i/p, pr srt, tr foss frags, tr glau, grad to CLCLT, calc cmt

CALCILUTITE: (tr) wh, lt olv gy, f-crs, calc slit, v f qtz gr, tr glau, sft

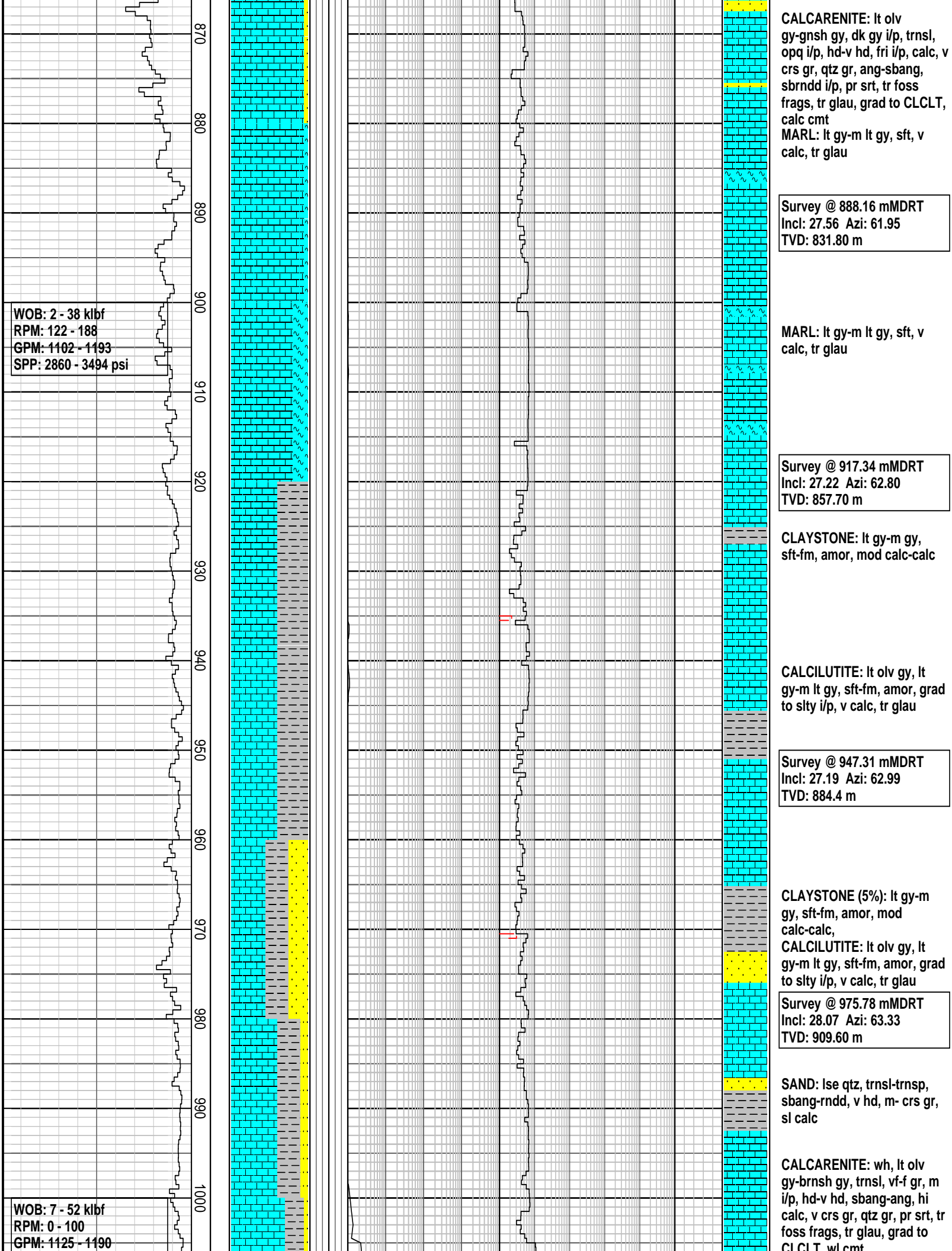
Survey @ 829.48 mMDRT
Incl: 27.47 Azi: 61.73
TVD: 779.80 m

CALCARENITE: lt olv gy-gnsh gy, dk gy i/p, trnsl, opq i/p, hd-v hd, fri i/p, calc, v crs gr, qtz gr, ang-sbang, sbrndd i/p, pr srt, tr foss frags, tr glau, grad to CLCLT, calc cmt

Survey @ 858.78 mMDRT
Incl: 27.34 Azi: 61.53
TVD: 805.70 m

27/04/2008

WOB: 9 - 58 klbf
RPM: 120 - 183
GPM: 1100 - 1108
SPP: 2823 - 2991 psi



WOB: 2 - 38 klbf
RPM: 122 - 188
GPM: 1102 - 1193
SPP: 2860 - 3494 psi

WOB: 7 - 52 klbf
RPM: 0 - 100
GPM: 1125 - 1190

Survey @ 888.16 mMDRT
Incl: 27.56 Azi: 61.95
TVD: 831.80 m

MARL: lt gy-m lt gy, sft, v calc, tr glau

Survey @ 917.34 mMDRT
Incl: 27.22 Azi: 62.80
TVD: 857.70 m

CLAYSTONE: lt gy-m gy, sft-fm, amor, mod calc-calc

CALCILUTITE: lt olv gy, lt gy-m lt gy, sft-fm, amor, grad to slty i/p, v calc, tr glau

Survey @ 947.31 mMDRT
Incl: 27.19 Azi: 62.99
TVD: 884.4 m

CLAYSTONE (5%): lt gy-m gy, sft-fm, amor, mod calc-calc,
CALCILUTITE: lt olv gy, lt gy-m lt gy, sft-fm, amor, grad to slty i/p, v calc, tr glau

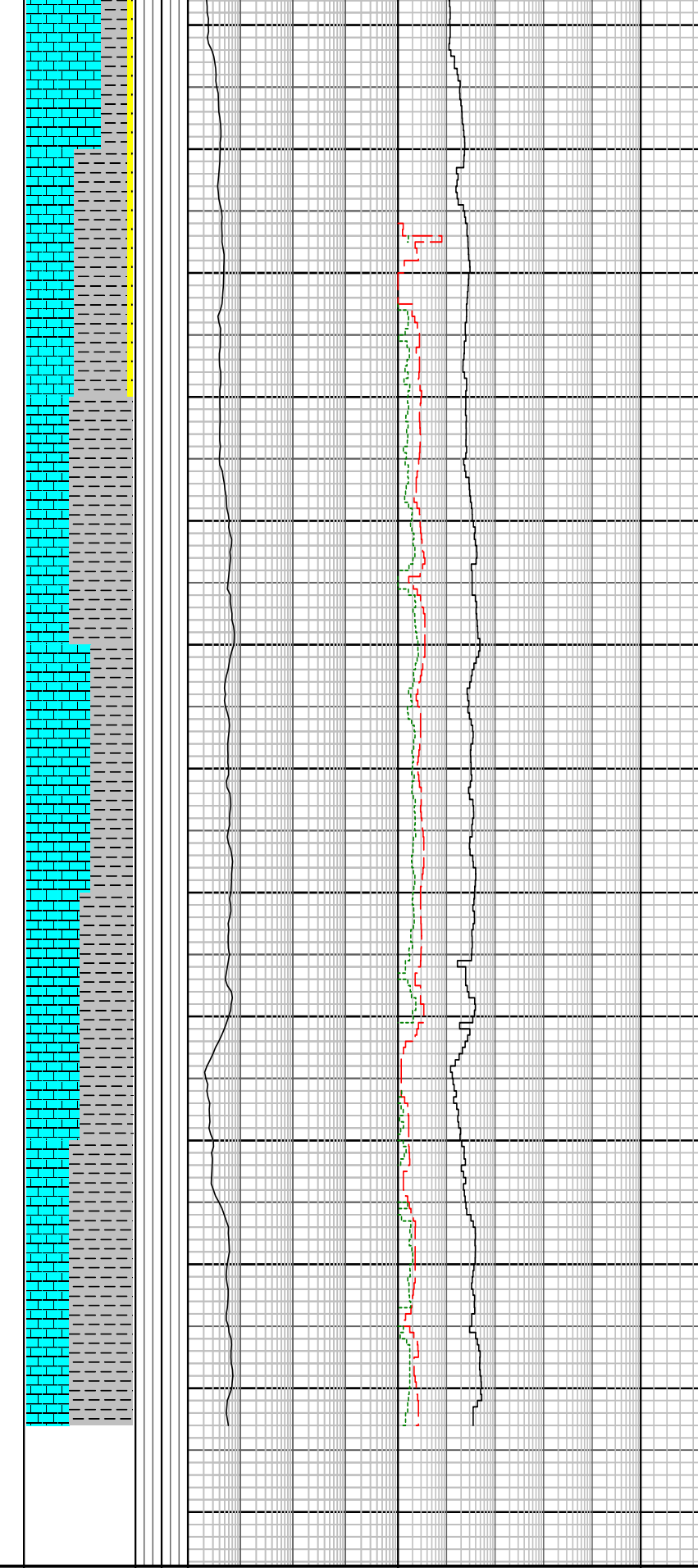
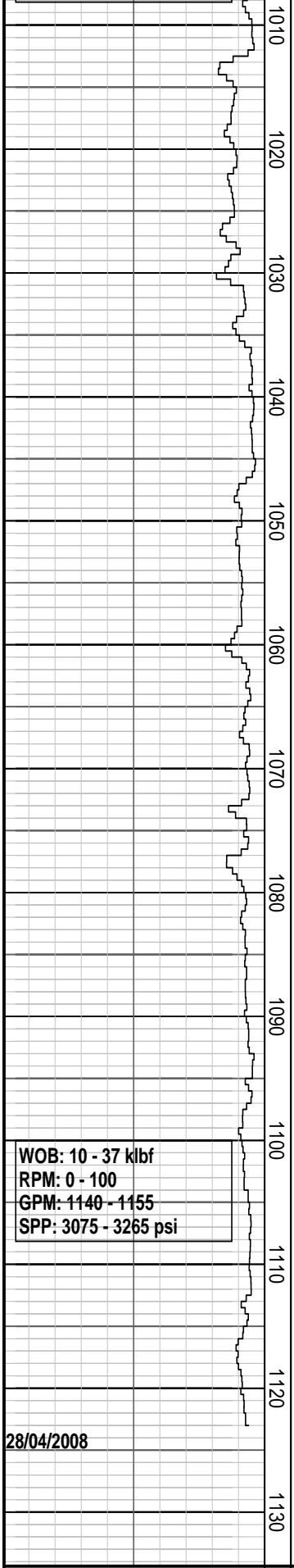
Survey @ 975.78 mMDRT
Incl: 28.07 Azi: 63.33
TVD: 909.60 m

SAND: lse qtz, trnsf-trnsp, sbang-rndd, v hd, m- crs gr, sl calc

CALCARENITE: wh, lt olv gy-brnsh gy, trnsf, vf-f gr, m i/p, hd-v hd, sbang-ang, hi calc, v crs gr, qtz gr, pr srt, tr foss frags, tr glau, grad to CLCLT, calc cmt

SPP: 3120 - 3540 psi

CLCLT, w/cmt



Survey @ 1005.05 mMDRT
 Incl: 27.39 Azi: 64.28
 TVD: 935.5 m

CALCILUTITE: wh-olv gy, lt olv gy, sft-fm, sbang, amor, qtz, comm f skeletal, slty mtrx, hi calc, grad to silty i/p

Survey @ 1034.76 mMDRT
 Incl: 27.23 Azi: 63.27
 TVD: 961.9 m

CALCARENITE: wh-lt olv gy, brnsh gy, vf-f gr, m i/p, hd-v hd, sbang-ang, hi calc, v crs gr, qtz gr, pr srt, tr foss frags, tr glau, grad to CLCLT, wl cmt

CALCILSILTITE: it-olv gy, frm-sft i/p, trnsp, comm v frm, slty, sb ang qtz, tr blk flk, tr skeletal mat, arg mat

Survey @ 1064.7 mMDRT
 Incl: 27.88 Azi: 62.07
 TVD: 988.4 m

CALCILUTITE: wh-olv gy, lt olv gy, sft-fm, sbang, amor, qtz, slty mtrx, hi calc, grad to silty i/p

CALCARENITE: wh-lt olv gy, brnsh gy, vf-f gr, m i/p, hd-v hd, sbang-ang, hi calc, v crs gr, qtz gr, pr srt, tr foss frags, tr glau, grad to CLCLT, wl cmt

Survey @ 1094.42 mMDRT
 Incl: 27.05 Azi: 63.32
 TVD: 1014.8 m

CALCILUTITE: wh-olv gy, olv gy, sft-fm, amor, slty mtrx, hi calc, grad to silty i/p

WOB: 10 - 37 kilbf
 RPM: 0 - 100
 GPM: 1140 - 1155
 SPP: 3075 - 3265 psi

28/04/2008

440 mm (17.5') Section TD @
 1123.0 m MDRT @ 27/04/2008

FORMATION EVALUATION LOG

Drilling Rate		TVDRT m	Cuttings	Oil Show	Visual Ir	Gas Data		Chromatograph Data		Calimetry	Interpret	Lithology Description
ROP (m/hr)						Gas Hydrocarbon Avg %	Methane ppm	Ethane ppm				
200	180	160	140	120	100	80	60	40	20	1	100000	
180	160	140	120	100	80	60	40	20	1	100000		

