

Company: Esso Australia Pty Ltd

Well: WEST KINGFISH W26A

Field: WEST KINGFISH

Rig: Rig 175

Country: Australia

Junk Basket with 6" Gauge Ring

MAXR Set Record

Gamma Ray / Casing Collar Log

Bass Strait

Gippsland

Elev.: K.B. 41.70 m

G.L. -77.00 m

D.F. 41.73 m

Permanent Datum: M.S.L.

Log Measured From: D.F.

Drilling Measured From: D.F.

Elev.: 0.00 m

41.73 m above Perm. Datum

Rig: Rig 175

Field: WEST KINGFISH

Location: Bass Strait

Well: WEST KINGFISH W26A

Company: Esso Australia Pty Ltd

State: Victoria

Max. Well Deviation 60.29 deg

Longitude 148 06 19.93 E.

Latitude 038 35 34.84 S.

| PVT DATA | | | Run 1 | Run 2 | Run 3 |
|--------------------------|---------|-----------|-------|-------|-------|
| Oil Density | | | | | |
| Water Salinity | | | | | |
| Gas Gravity | | | | | |
| Bo | | | | | |
| Bw | | | | | |
| 1/Bg | | | | | |
| Bubble Point Pressure | | | | | |
| Bubble Point Temperature | | | | | |
| Solution GOR | | | | | |
| Maximum Deviation | | 60.29 deg | | | |
| CEMENTING DATA | | | | | |
| Primary/Squeeze | Primary | | | | |
| Casing String No | | | | | |
| Lead Cement Type | | | | | |
| Volume | | | | | |
| Density | | | | | |
| Water Loss | | | | | |
| Additives | | | | | |
| Tail Cement Type | | | | | |
| Volume | | | | | |
| Density | | | | | |
| Water Loss | | | | | |
| Additives | | | | | |
| Expected Cement Top | | | | | |

| | | | |
|-------------------------------|-----------------|------|-------|
| Logging Date | 8-Jan-2010 | | |
| Run Number | 2-3 | | |
| Depth Driller | 3832 m | | |
| Schlumberger Depth | 3782.5 m | | |
| Bottom Log Interval | 3780 m | | |
| Top Log Interval | 20 m | | |
| Casing Fluid Type | Brine | | |
| Salinity | | | |
| Density | 8.55 g/cm3 | | |
| Fluid Level | 0 m | | |
| BIT/CASING/TUBING STRING | | | |
| Bit Size | 8,000 in | | |
| From | 732 m | | |
| To | 3831 m | | |
| Casing/Tubing Size | 7,000 in | | |
| Weight | 26 lbm/ft | | |
| Grade | L-80 | | |
| From | 20.3 m | | |
| To | 3831 m | | |
| Maximum Recorded Temperatures | | | |
| Logger On Bottom | 8-Jan-2010 | | 13:13 |
| Unit Number | 3829 | AUSL | |
| Recorded By | J. Hollingworth | | |
| Witnessed By | M. Calicut | | |

| | | | |
|-------------------------------|--|--|--|
| Logging Date | | | |
| Run Number | | | |
| Depth Driller | | | |
| Schlumberger Depth | | | |
| Bottom Log Interval | | | |
| Top Log Interval | | | |
| Casing Fluid Type | | | |
| Salinity | | | |
| Density | | | |
| Fluid Level | | | |
| BIT/CASING/TUBING STRING | | | |
| Bit Size | | | |
| From | | | |
| To | | | |
| Casing/Tubing Size | | | |
| Weight | | | |
| Grade | | | |
| From | | | |
| To | | | |
| Maximum Recorded Temperatures | | | |
| Logger On Bottom | | | |
| Unit Number | | | |
| Recorded By | | | |
| Witnessed By | | | |

DEPTH SUMMARY LISTING

Date Created: 8-JAN-2010 21:34:50

Depth System Equipment

| Depth Measuring Device | | Tension Device | | Logging Cable | |
|---------------------------|------------|-------------------------------|------------|--------------------|----------------|
| Type: | IDW-E | Type: | CMTD-B/A | Type: | 7-46ZV XS |
| Serial Number: | 727 | Serial Number: | 1173 | Serial Number: | 708145 |
| Calibration Date: | 9-Sep-2009 | Calibration Date: | 6-Jan-2010 | Length: | 6650 M |
| Calibrator Serial Number: | 30 | Calibrator Serial Number: | 300286 | | |
| Calibration Cable Type: | 7-46V XS | Number of Calibration Points: | 10 | Conveyance Method: | Wireline |
| Wheel Correction 1: | -4 | Calibration RMS: | 22 | Rig Type: | Offshore Fixed |
| Wheel Correction 2: | -1 | Calibration Peak Error: | 41 | | |

Depth Control Parameters

| | |
|---------------------------|----------------------------|
| Log Sequence: | Subsequent Log In the Well |
| Reference Log Name: | SBL MWD Log |
| Reference Log Run Number: | |
| Reference Log Date: | 21-Dec-09 |

Depth Control Remarks

1. IDW used as primary depth control
2. Z-chart used as secondary depth control
3. All log zeroed at drill floor
4. Log correlated to Schlumberger MWD lod provided by the client
- 5.
- 6.

DISCLAIMER

THE USE OF AND RELIANCE UPON THIS RECORDED-DATA BY THE HEREIN NAMED COMPANY (AND ANY OF ITS AFFILIATES, PARTNERS, REPRESENTATIVES, AGENTS, CONSULTANTS AND EMPLOYEES) IS SUBJECT TO THE TERMS AND CONDITIONS AGREED UPON BETWEEN SCHLUMBERGER AND THE COMPANY, INCLUDING: (a) RESTRICTIONS ON USE OF THE RECORDED-DATA; (b) DISCLAIMERS AND WAIVERS OF WARRANTIES AND REPRESENTATIONS REGARDING COMPANY'S USE OF AND RELIANCE UPON THE RECORDED-DATA; AND (c) CUSTOMER'S FULL AND SOLE RESPONSIBILITY FOR ANY INFERENCE DRAWN OR DECISION MADE IN CONNECTION WITH THE USE OF THIS RECORDED-DATA.


| | |
|--|-----------------------|
| OTHER SERVICES1 | OTHER SERVICES2 |
| OS1: None | OS1: |
| OS2: | OS2: |
| OS3: | OS3: |
| OS4: | OS4: |
| OS5: | OS5: |
| REMARKS: RUN NUMBER 1 | REMARKS: RUN NUMBER 2 |
| Log correlated to PNG log provided by client | |
| Objective:RIH with Junk Basket & 6" Guage ring to HUD, ensure access for | MaxR run |
| CCL to Bottom Of Junk Basket = 2.5 m | |
| HUD tagged @ 3782.5 m MDKB with Junk Basket | |
| PIP Tagged @ 3650.7m MDKB | |
| CCL to top shot 11.66m | |
| Perforation Intervall 3692.0 – 3693.3 m. | |

| | |
|--|--|
| Generation Interval: 000010 - 000010 min | |
| CCL Stop Depth @3680.34 m | |
| | |
| | |
| | |
| | |
| | |
| | |
| | |
| | |
| | |
| | |

| RUN 1 | | | RUN 2 | | |
|------------------|----------|------|------------------|-------|------|
| SERVICE ORDER #: | | | SERVICE ORDER #: | | |
| PROGRAM VERSION: | | | PROGRAM VERSION: | | |
| FLUID LEVEL: | | | FLUID LEVEL: | | |
| | 17C0-154 | 0 m | | | |
| LOGGED INTERVAL | START | STOP | LOGGED INTERVAL | START | STOP |
| | | | | | |
| | | | | | |
| | | | | | |
| | | | | | |

| EQUIPMENT DESCRIPTION | | | | | |
|-----------------------|--|--|-------|--|--|
| RUN 1 | | | RUN 2 | | |

| SURFACE EQUIPMENT | | | SURFACE EQUIPMENT | | |
|-------------------|--|--|-------------------|--|--|
| WITM (SHM) | | | WITM (SHM) | | |

| DOWNHOLE EQUIPMENT | | | DOWNHOLE EQUIPMENT | | |
|---|---|--|---|--|--|
| <div> <div>LEH-QT 3-3/8"</div> <div>LEH-QT 3-3/8" 1117</div> </div> <div> <div>PGGT-D</div> <div>PGGC</div> <div>PGGH-D</div> </div> <div> <div>Gamma Ray</div> <div>Casing Co Tension</div> </div> |  | <div>4.43</div> <div>3.54</div> <div>1.07</div> <div>TOOL ZERO</div> | <div> <div>PEH-A</div> <div>PEH-A</div> </div> <div> <div>AH-64 6404</div> <div>AH-64 6404</div> </div> <div> <div>PGGT-D</div> <div>PGGC</div> <div>PGGH-D 6</div> </div> <div> <div>Gamma Ray</div> <div>Casing Co Tension</div> </div> | | <div>17.50</div> <div>16.95</div> <div>16.54</div> <div>TOOL ZERO</div> <div>14.76</div> <div>14.59</div> <div>12.44</div> |
| | | | | | |
| | | | | | |
| | | | | | |
| | | | | | |

AH-283 3-3/8"
AH-283 3-3/8" 3002

AH-Junk Basket 5-1/2" OD
AH-Junk Basket 5-1/2" OD

AH-Gauge Ring 6"

SHM_GUN

TOOL BOTTOM

MAXIMUM STRING DIAMETER 6.00 IN
MEASUREMENTS RELATIVE TO TOOL ZERO
ALL LENGTHS IN METERS

1.76

1.60

0.08

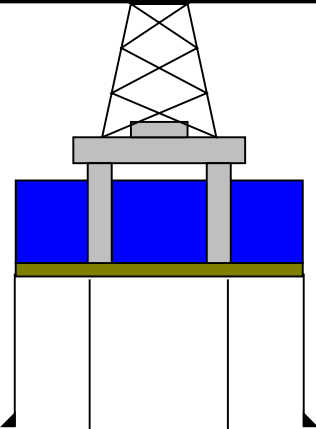
0.00

AH-4-1/2" HSD
AH-4-1/2" HSD

6.68

TOOL BOTTOM

MAXIMUM STRING DIAMETER 5.00 IN
MEASUREMENTS RELATIVE TO TOOL ZERO
ALL LENGTHS IN METERS

| Production String | (in) (m) | | | Well Schematic | (m) (in) | | | Casing String |
|-------------------|----------|----|----|---|----------|--------|----|----------------|
| | OD | ID | MD | | MD | OD | ID | |
| Mean Sea Level | | | |  | 732 | 10.750 | | Surface Casing |

[illegible]

Shoot Pass...MAXR

MAXIS Field Log

Company: Esso Australia Pty Ltd

Well: WEST KINGFISH W26A

Output DLIS Files

| | | | | | | |
|---------|--------------|-------|----------|-------------------|----------|----------|
| DEFAULT | PERFO_052LUP | FN:51 | PRODUCER | 08-Jan-2010 20:57 | 3715.2 M | 3612.0 M |
|---------|--------------|-------|----------|-------------------|----------|----------|

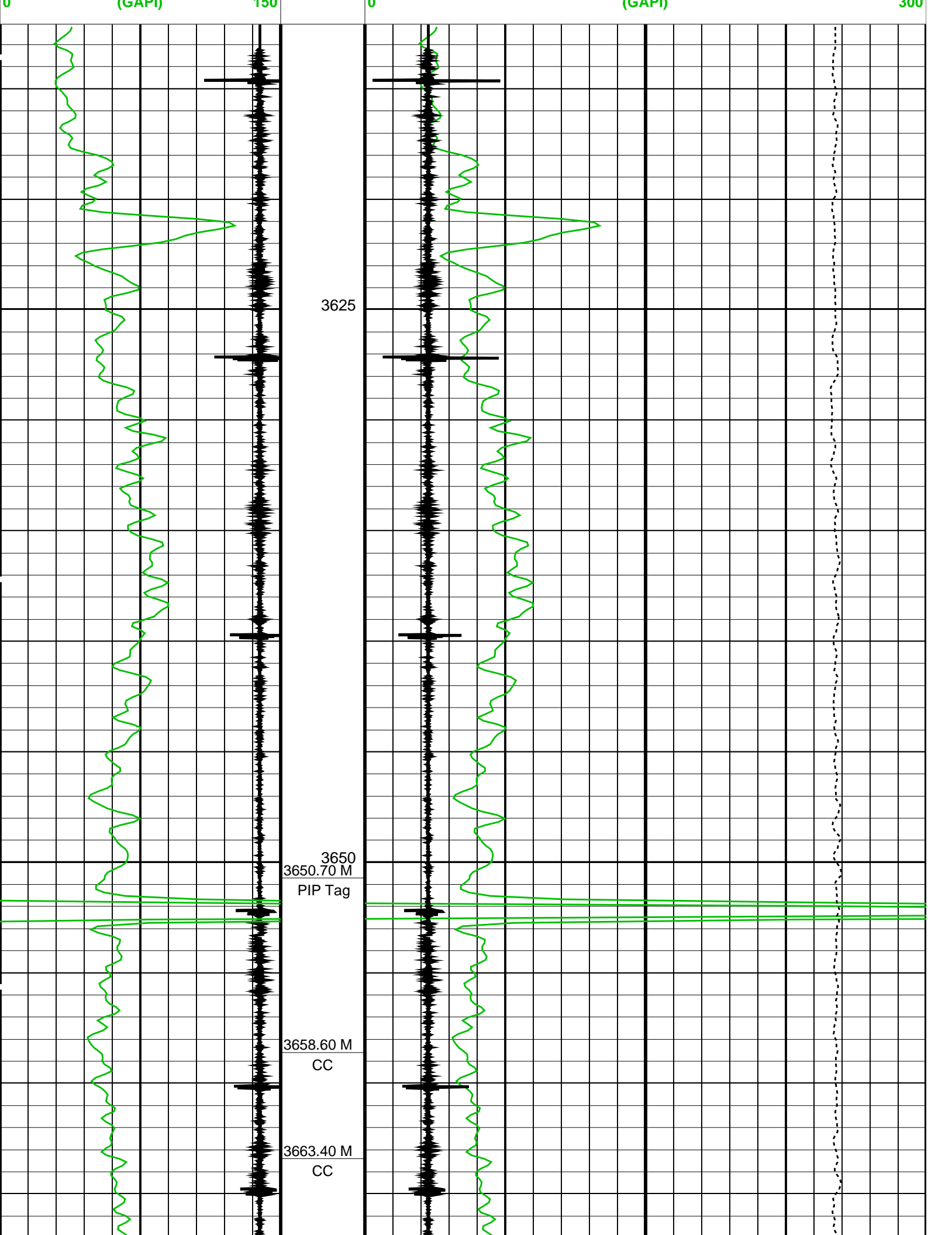
OP System Version: 17C0-154

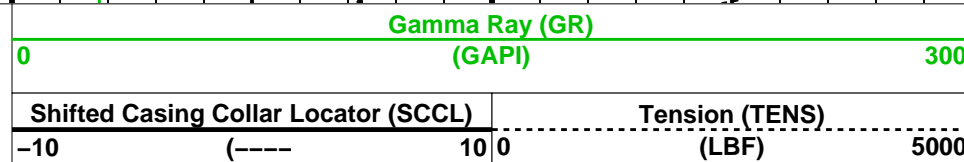
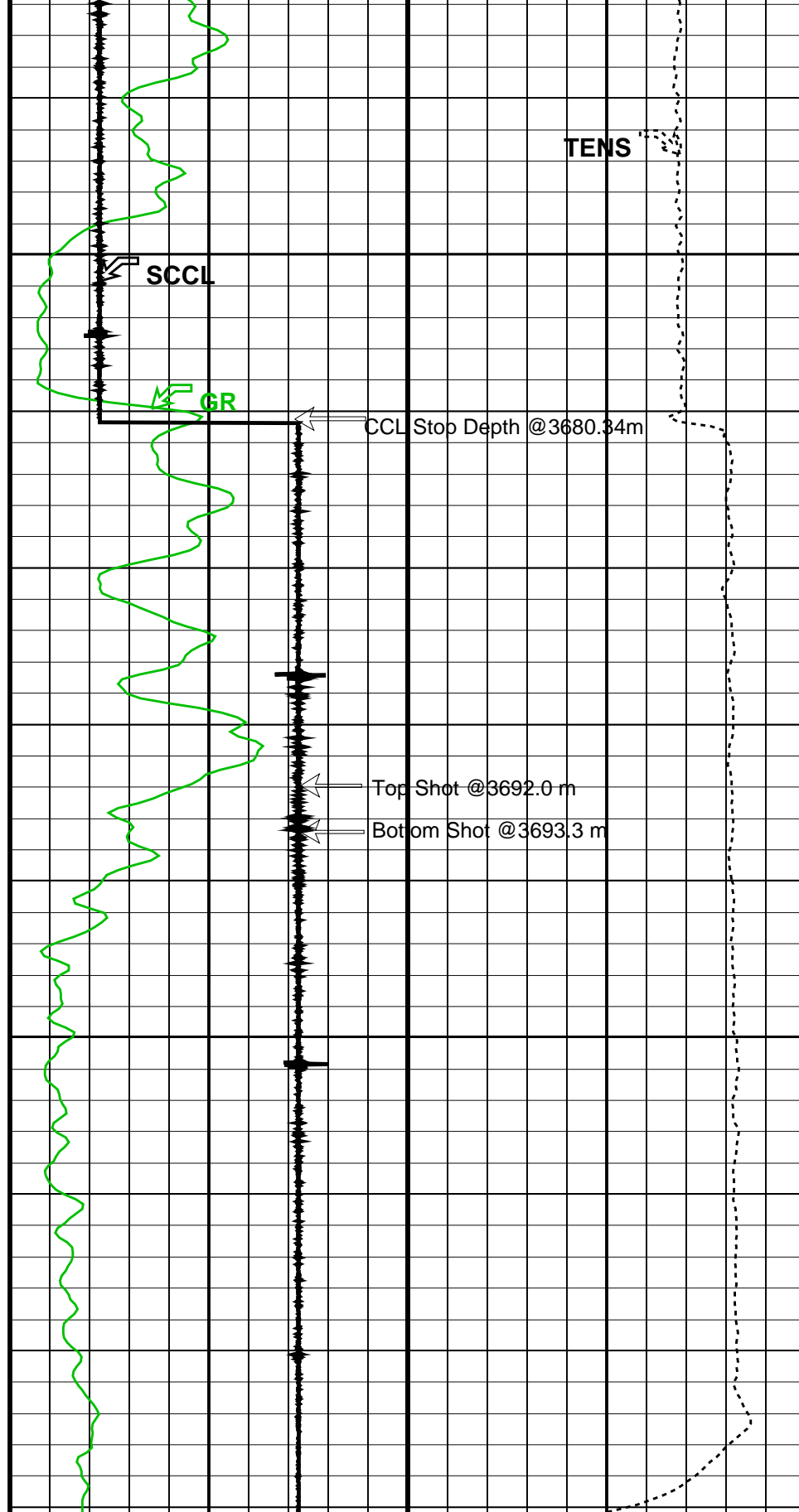
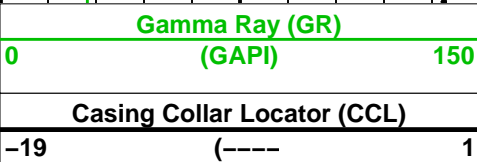
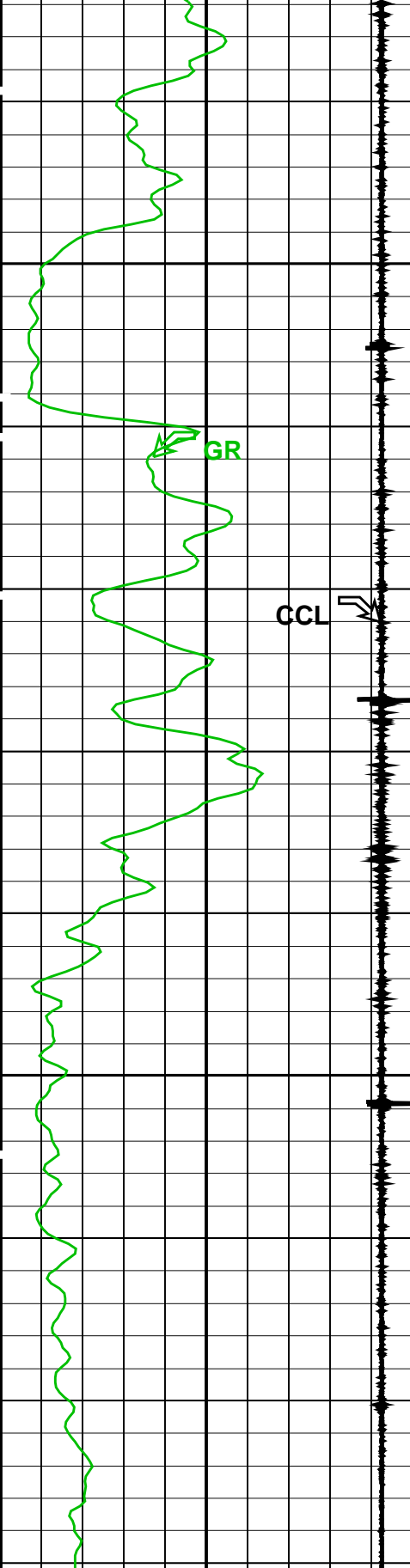
| | | | |
|---------|----------|--------|----------|
| SHM_GUN | 17C0-154 | PGGT-D | 17C0-154 |
|---------|----------|--------|----------|

PIP SUMMARY

Time Mark Every 60 S

| | | | | | | |
|-----------------------------|-------|---|--------------------------------------|-------|----------------|---|
| Casing Collar Locator (CCL) | | | Shifted Casing Collar Locator (SCCL) | | Tension (TENS) | |
| -19 | (---- | 1 | -10 | (---- | 10 | 0 |
| | | | | | (LBF) 5000 | |
| Gamma Ray (GR) | | | Gamma Ray (GR) | | | |
| (GAP) 150 | | | (GAP) 200 | | | |





PIP SUMMARY

Time Mark Every 60 S

Format: PERFO Vertical Scale: 1:200

Graphics File Created: 08-Jan-2010 20:58

OP System Version: 17C0-154

SHM_GUN 17C0-154 PGGT-D 17C0-154

Output DLIS Files

DEFAULT PERFO_052LUP FN:51 PRODUCER 08-Jan-2010 20:57

Schlumberger

Correlation Pass...MAXR

MAXIS Field Log

Company: Esso Australia Pty Ltd

Well: WEST KINGFISH W26A

Output DLIS Files

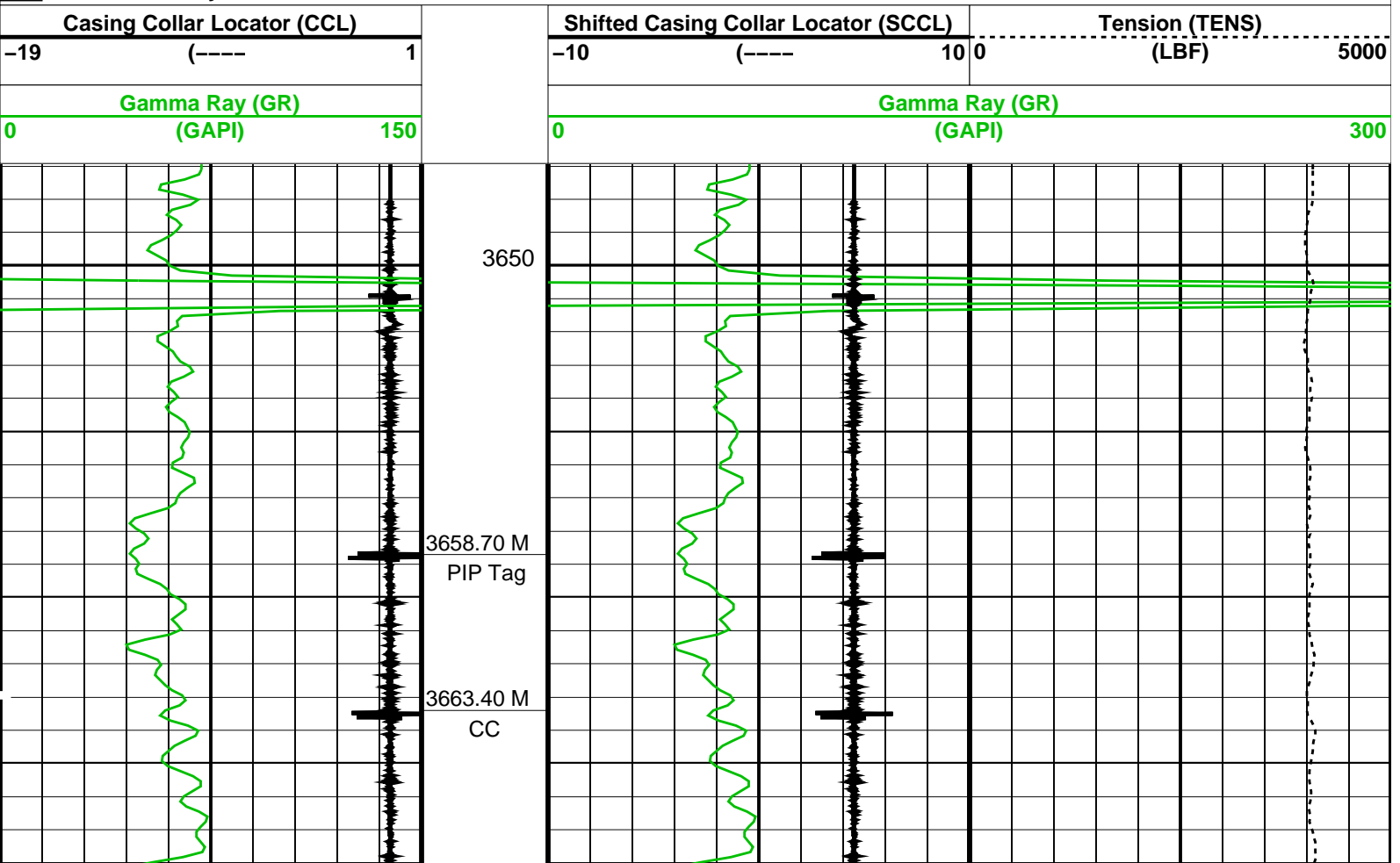
DEFAULT PERFO_048LUP FN:47 PRODUCER 08-Jan-2010 20:18 3715.1 M 3646.8 M

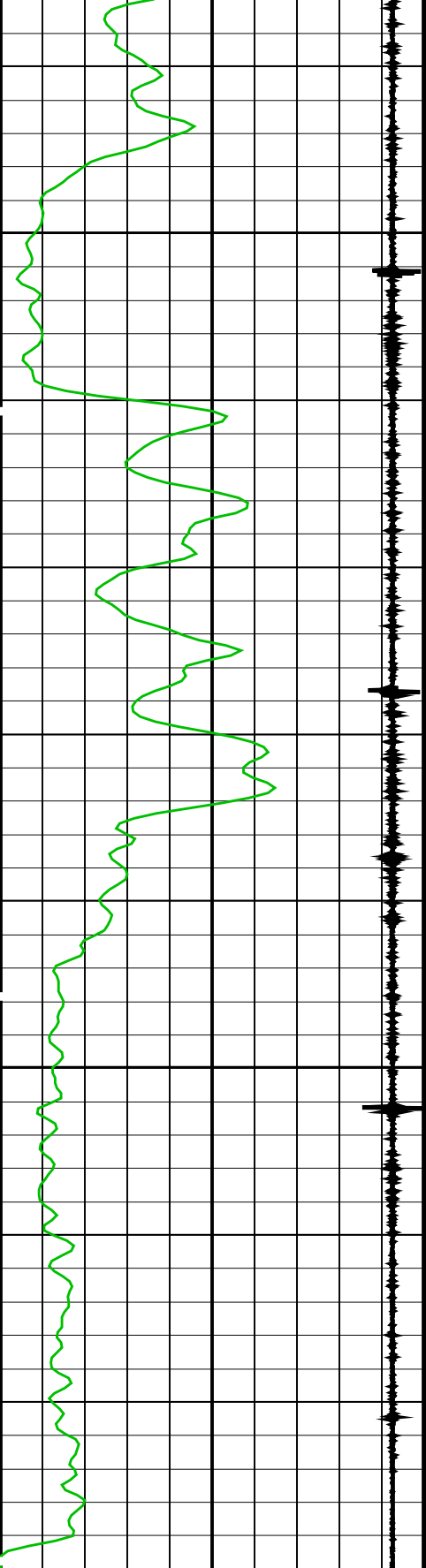
OP System Version: 17C0-154

SHM_GUN 17C0-154 PGGT-D 17C0-154

PIP SUMMARY

☒ Time Mark Every 60 S



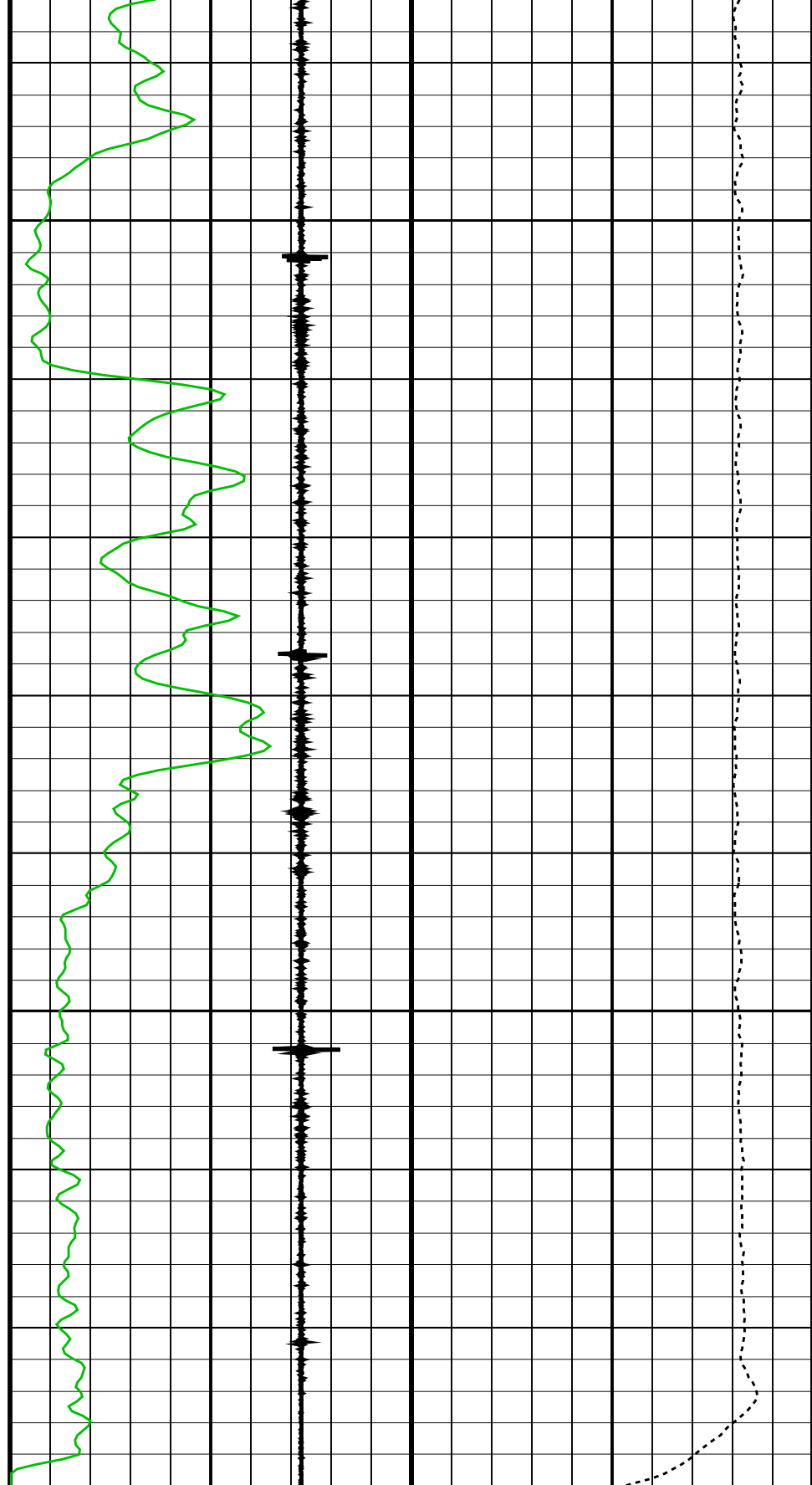


Gamma Ray (GR)
(GAPI) 0 150

Casing Collar Locator (CCL)
(----) -19 1

3675

3700



Gamma Ray (GR)
(GAPI) 0 300

Shifted Casing Collar Locator (SCCL)
(----) -10 10

Tension (TENS)
(LBF) 0 5000

PIP SUMMARY

| | | | |
|-------------------|--------------|--------|----------------------------|
| SHM_GUN | 17C0-154 | PGGT-D | 17C0-154 |
| Output DLIS Files | | | |
| DEFAULT | PERFO_048LUP | FN:47 | PRODUCER 08-Jan-2010 20:18 |

Schlumberger

6" Junk Basket Pass

MAXIS Field Log

Company: Esso Australia Pty Ltd Well: WEST KINGFISH W26A

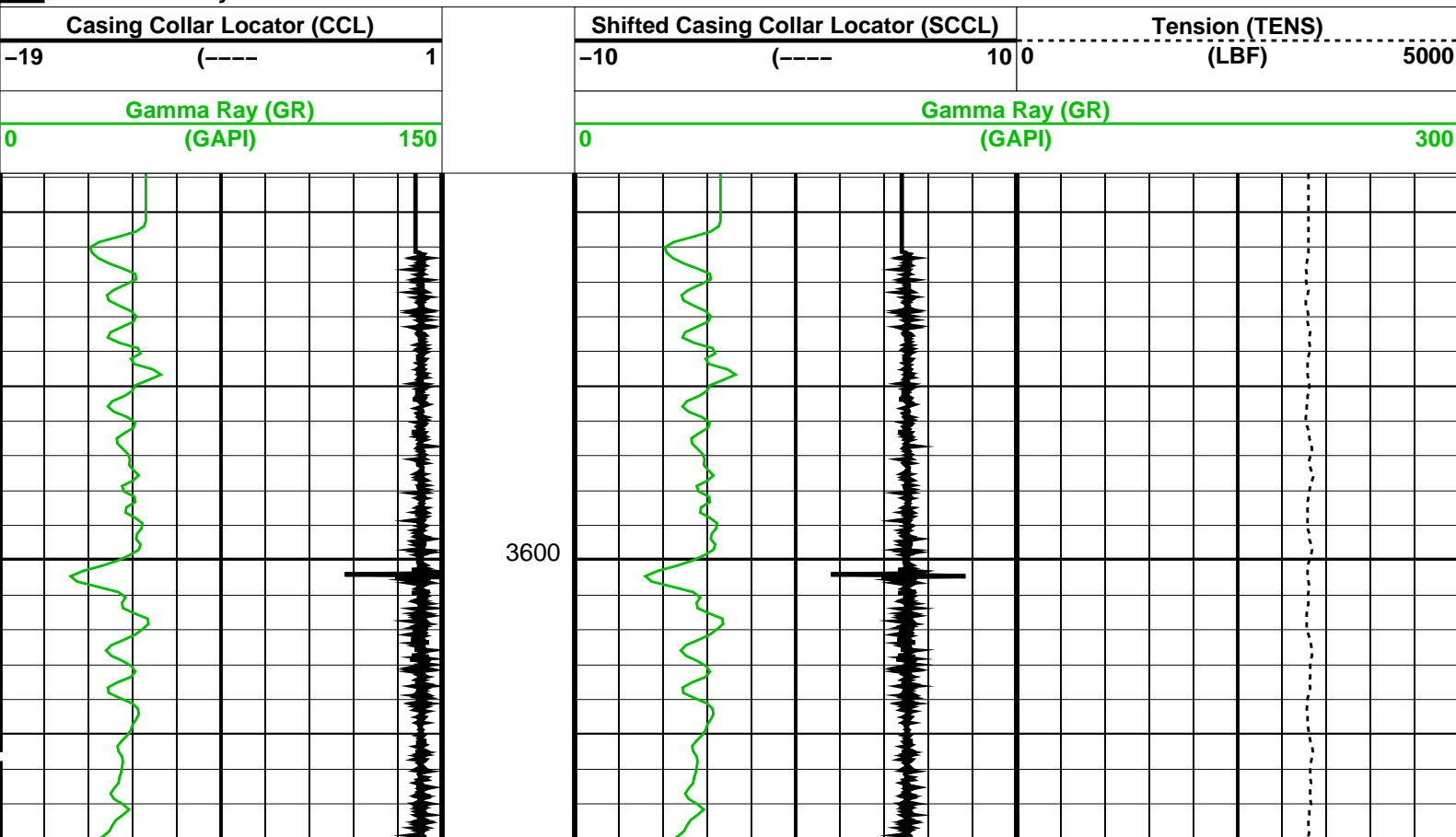
| | | | | | |
|-------------------|--------------|-------|----------|-------------------|-------------------|
| Input DLIS Files | | | | | |
| DEFAULT | PERFO_033LUP | FN:31 | PRODUCER | 08-Jan-2010 13:15 | 3788.1 M 3591.8 M |
| Output DLIS Files | | | | | |
| DEFAULT | PERFO_035PUP | FN:33 | PRODUCER | 08-Jan-2010 13:36 | 3786.2 M 3588.7 M |

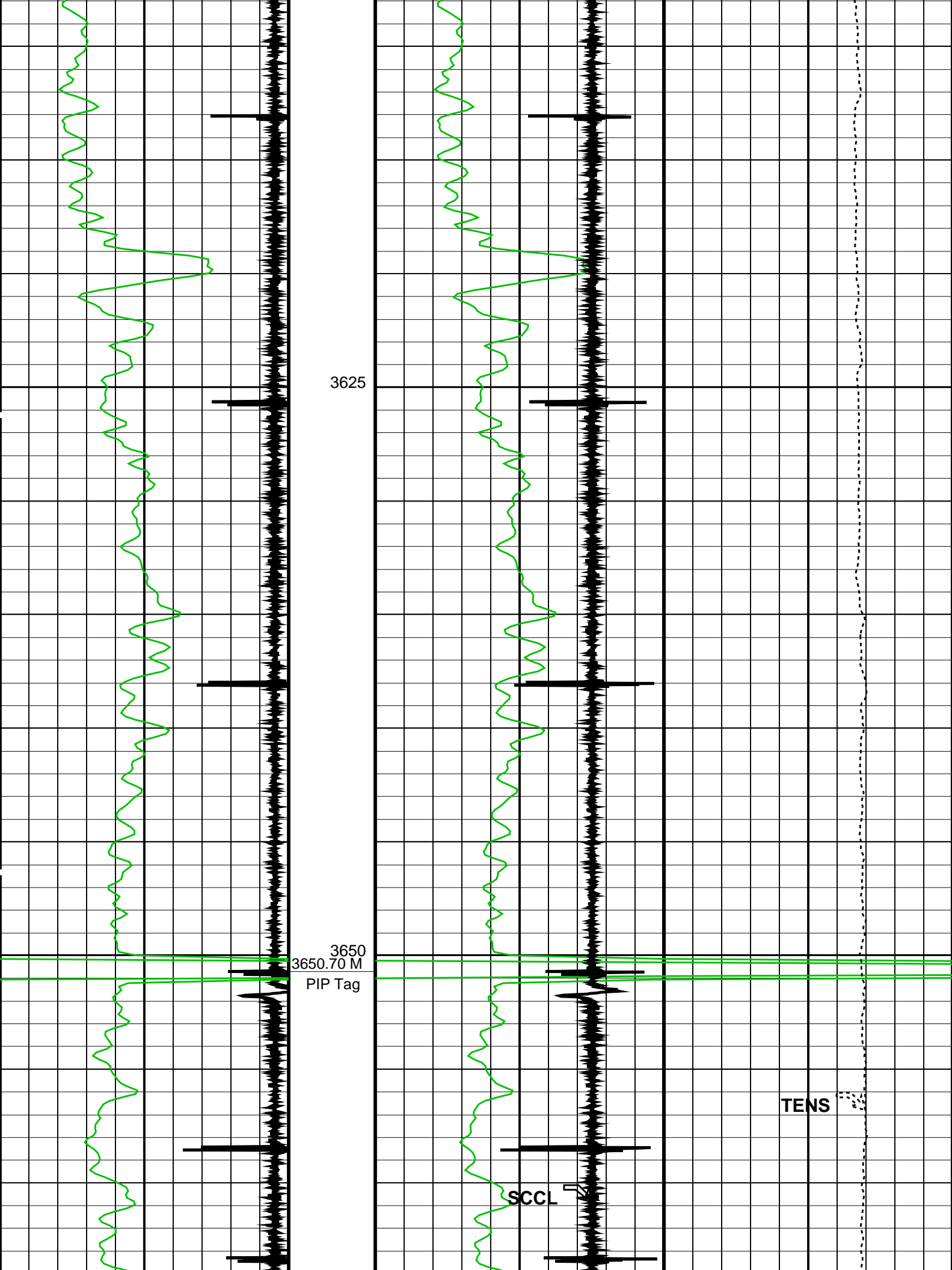
OP System Version: 17C0-154

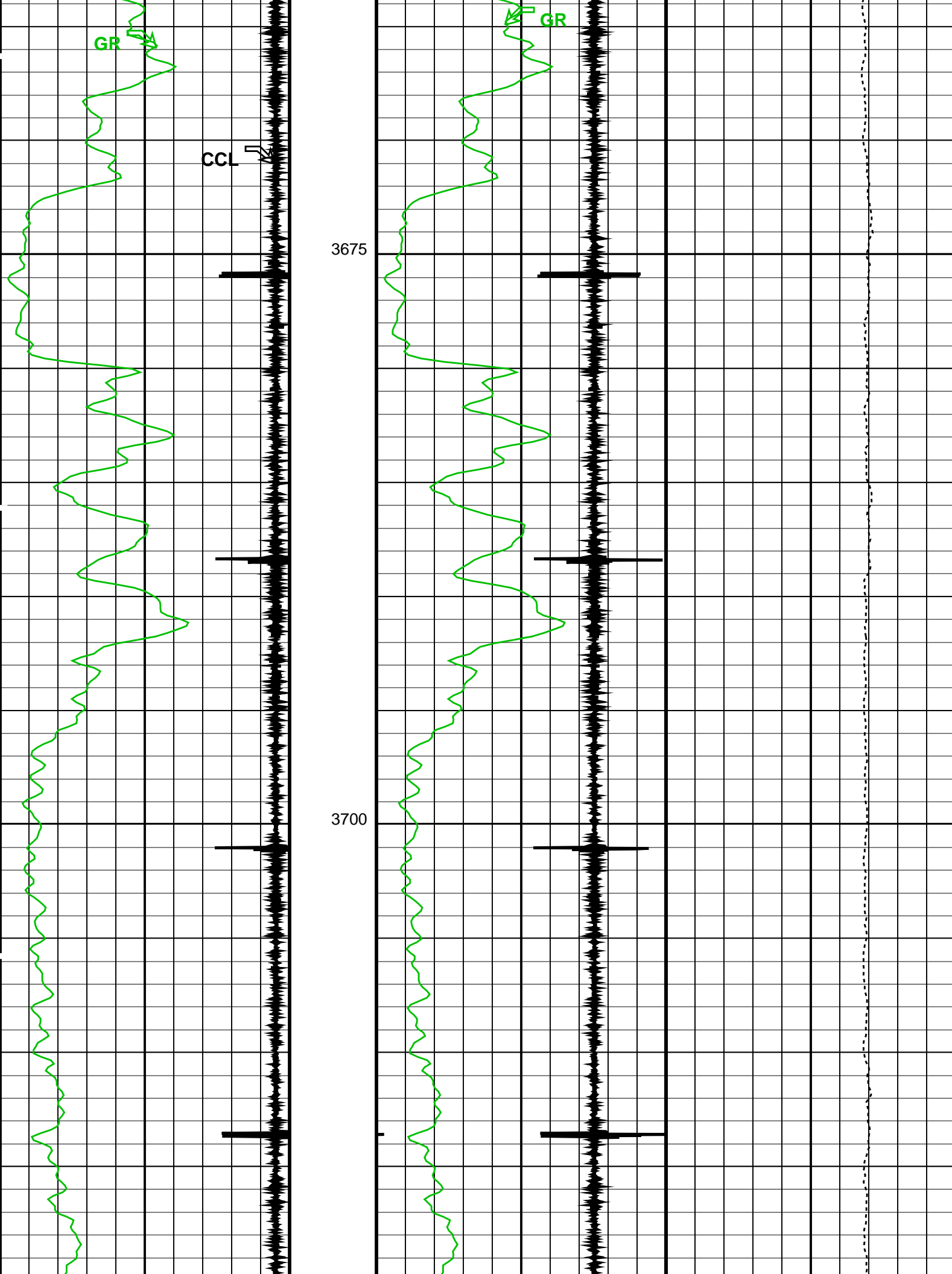
| | | | |
|---------|----------|--------|----------|
| SHM_GUN | 17C0-154 | PGGT-D | 17C0-154 |
|---------|----------|--------|----------|

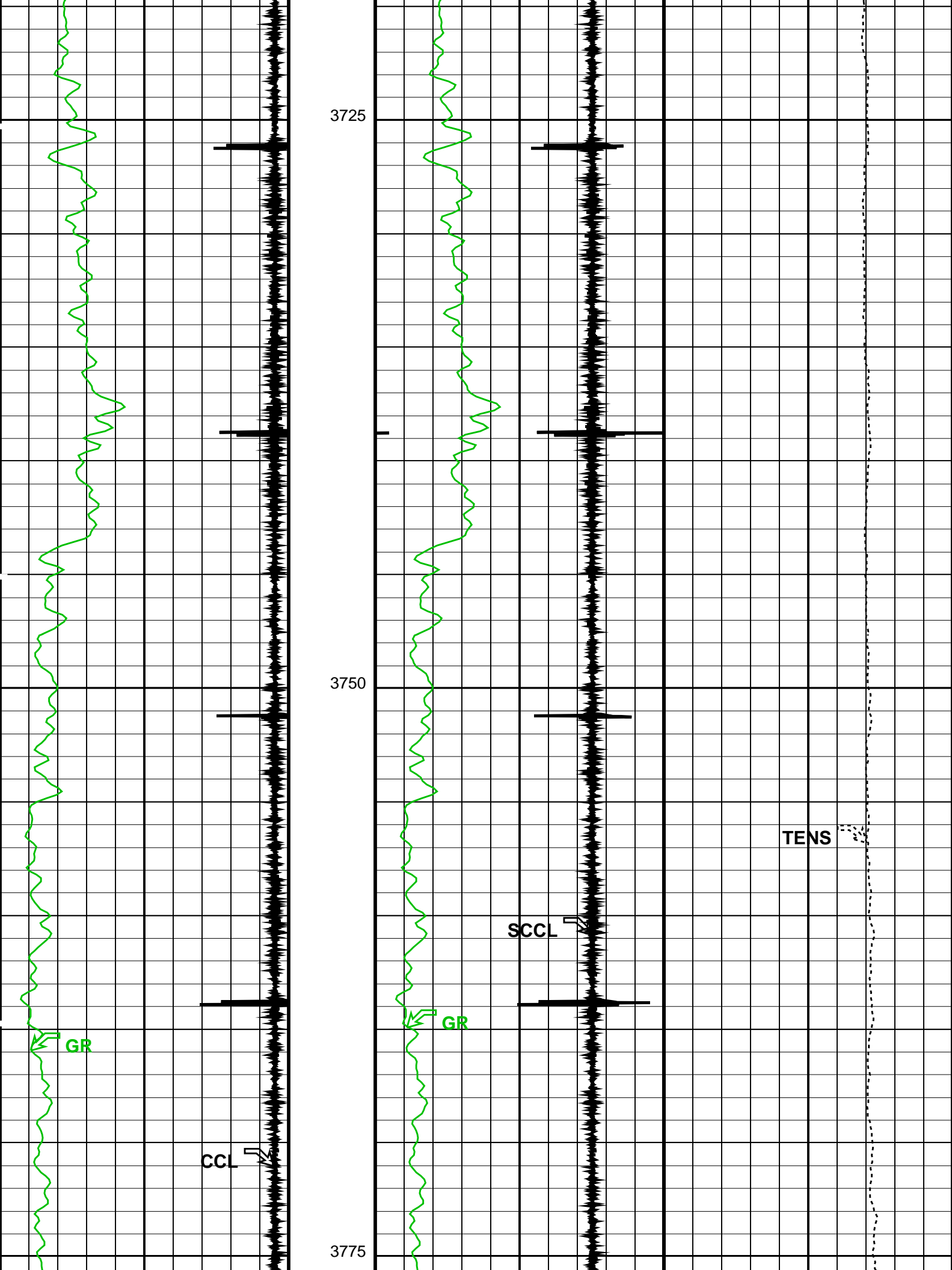
PIP SUMMARY

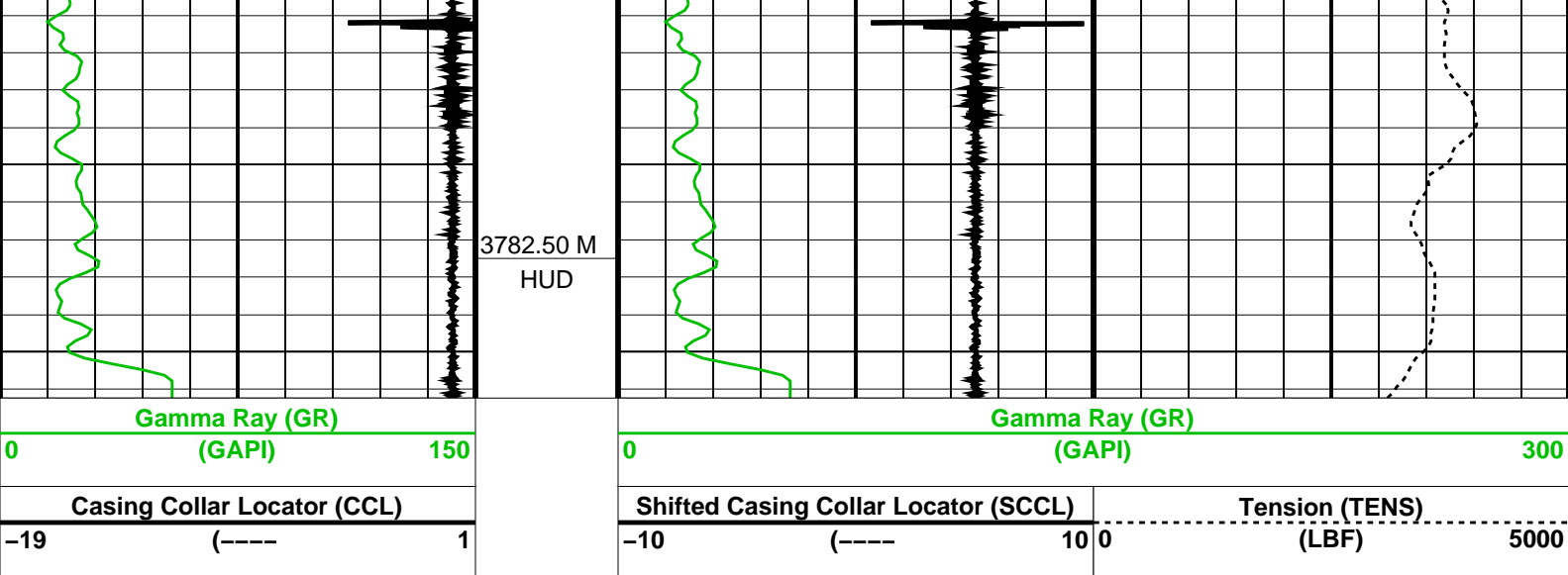
Time Mark Every 60 S











PIP SUMMARY

Time Mark Every 60 S

Parameters

| DLIS Name | Description | Value |
|-----------|--|------------------|
| DO PP | System and Miscellaneous Depth Offset for Playback Playback Processing | -1.8 M NORMAL |

Format: PERFO Vertical Scale: 1:200 Graphics File Created: 08-Jan-2010 13:36

OP System Version: 17C0-154

SHM_GUN 17C0-154 PGGT-D 17C0-154

Input DLIS Files

DEFAULT PERFO_033LUP FN:31 PRODUCER 08-Jan-2010 13:15 3788.1 M 3591.8 M

Output DLIS Files

DEFAULT PERFO_035PUP FN:33 PRODUCER 08-Jan-2010 13:36

Company: Esso Australia Pty Ltd

Schlumberger

Well: WEST KINGFISH W26A

Field: WEST KINGFISH

Rig: Rig 175

Country: Australia

Junk Basket with 6" Gauge Ring
MAXR Set Record
Gamma Ray / Casing Collar Log