

Schlumberger

Company:

Esso Australia Pty Ltd

Well:

WKF W26A

Field:

West Kingfish

Rig:

Rig 175

Country:

Australia

Rig: Rig 175

Field: West Kingfish

Location: Bass Strait

Well: WKF W26A

Company: Esso Australia Pty Ltd

LOCATION

Junk Basket with 6" Gauge Ring

24-Dec-09

Bass Strait

Gippsland

Elev.:

K.B.

41.70 m

G.L.

-77.00 m

D.F.

41.73 m

Permanent Datum:

MSL

Elev.:

0.00 m

Log Measured From:

Drill Floor

41.73 m

above Perm. Datum

Drilling Measured From:

Drill Floor

State:

Victoria

Max. Well Deviation

60.29 deg

Longitude

148°6'19.93423"E

Latitude

38° 35' 34.84865" S

Logging Date	24-Dec-2009
Run Number	1
Depth Driller	3832 m
Schlumberger Depth	3794.11 m
Bottom Log Interval	3794.11 m
Top Log Interval	20 m
Casing Fluid Type	Brine
Salinity	
Density	8.55 g/cm3
Fluid Level	0 m
BIT/CASING/TUBING STRING	
Bit Size	8.000 in
From	732 m
To	3831 m
Casing/Tubing Size	7.000 in
Weight	26 lbm/ft
Grade	L-80
From	20.3 m
To	3831 m
Maximum Recorded Temperatures	
Logger On Bottom	Time
Unit Number	Location
Recorded By	M. Pratt
Witnessed By	M. Cullicut, G. Doty, S. Faulkner

	Run 1	
PVT DATA	Oil Density	
	Water Salinity	
	Gas Gravity	
	Bo	
	Bw	
	1/Bg	
	Bubble Point Pressure	
	Bubble Point Temperature	
	Solution GOR	
	Maximum Deviation	60.29 deg
CEMENTING DATA		
Primary/Squeeze	Primary	
Casing String No		
Lead Cement Type		
Volume		
Density		
Water Loss		
Additives		
Tail Cement Type		
Volume		
Density		
Water Loss		
Additives		
Expected Cement Top		
Logging Date		
Run Number		
Depth Driller		
Schlumberger Depth		
Bottom Log Interval		
Top Log Interval		
Casing Fluid Type		
Salinity		
Density		
Fluid Level		
BIT/CASING/TUBING STRING		
Bit Size		
From		
To		
Casing/Tubing Size		
Weight		
Grade		
From		
To		
Maximum Recorded Temperatures		
Logger On Bottom	Time	
Unit Number	Location	
Recorded By		
Witnessed By		

DEPTH SUMMARY LISTING

Date Created: 22-DEC-2009 6:49:31

Depth System Equipment

Depth Measuring Device		Tension Device		Logging Cable	
Type:	IDW-E	Type:	CMTD-B/A	Type:	7-46ZV XS
Serial Number:	727	Serial Number:	1173	Serial Number:	708145
Calibration Date:	9-Sep-2009	Calibration Date:	14-Nov-2009	Length:	6656 M
Calibrator Serial Number:	30	Calibrator Serial Number:	300286	Conveyance Method: Wireline Rig Type: Offshore Fixed	
Calibration Cable Type:	7-46V XS	Number of Calibration Points:	10		
Wheel Correction 1:	-4	Calibration RMS:	30		
Wheel Correction 2:	-1	Calibration Peak Error:	41		

Depth Control Parameters

Log Sequence:	First Log In the Well
Rig Up Length At Surface:	0.00 M
Rig Up Length At Bottom:	0.00 M
Rig Up Length Correction:	0.00 M
Stretch Correction:	
Tool Zero Check At Surface:	

Depth Control Remarks

1. IDW used as primary depth control
2. First log in well schlumberger depth control procedures applied
3. All log zeroed at drill floor
4. Log correlated to Schlumberger MWD lod provided by the client
5.
6.

DISCLAIMER

THE USE OF AND RELIANCE UPON THIS RECORDED-DATA BY THE HEREIN NAMED COMPANY (AND ANY OF ITS AFFILIATES, PARTNERS, REPRESENTATIVES, AGENTS, CONSULTANTS AND EMPLOYEES) IS SUBJECT TO THE TERMS AND CONDITIONS AGREED UPON BETWEEN SCHLUMBERGER AND THE COMPANY, INCLUDING: (a) RESTRICTIONS ON USE OF THE RECORDED-DATA; (b) DISCLAIMERS AND WAIVERS OF WARRANTIES AND REPRESENTATIONS REGARDING COMPANY'S USE OF AND RELIANCE UPON THE RECORDED-DATA; AND (c) CUSTOMER'S FULL AND SOLE RESPONSIBILITY FOR ANY INFERENCE DRAWN OR DECISION MADE IN CONNECTION WITH THE USE OF THIS RECORDED-DATA.

OTHER SERVICES1		OTHER SERVICES2	
OS1:	None	OS1:	
OS2:		OS2:	
OS3:		OS3:	
OS4:		OS4:	
OS5:		OS5:	
REMARKS: RUN NUMBER 1		REMARKS: RUN NUMBER 2	
Log correlated to PNG log provided by client			
Objective:RIH with Junk Basket & 6" Guage ring to HUD, ensure access forMaxR run			
No completion at this time will be run.After JB run they plan to drill and compl			
WKF W9. Once completed, skid across to WKF W26A and finish completion.			
JB run to save scraper run and picking up drill pipe.			
HUD tagged @ 3794.11m MDKB with Junk Basket			

PIP Tagged @ 3650.7m MDKB

Schlumberger crew:

Days: D. Watts, J. Donahoe

Nights: K. Kerr, A. Hall

RUN 1 SERVICE ORDER #: PROGRAM VERSION: 17C0-154 FLUID LEVEL: 0 m			SERVICE ORDER #: PROGRAM VERSION: FLUID LEVEL:		
LOGGED INTERVAL	START	STOP	LOGGED INTERVAL	START	STOP

[illegible]

RUN 1		RUN 2	
SURFACE EQUIPMENT			
DOWNHOLE EQUIPMENT			
LEH-QT 3-3/8"			
LEH-QT 3-3/8" 1117	4.43		
PGGT-D			
PGGC			
PGGH-D			
Gamma Ray	3.54		
	1.07		
Casing Co Tension	TOOL ZERO		

1

1

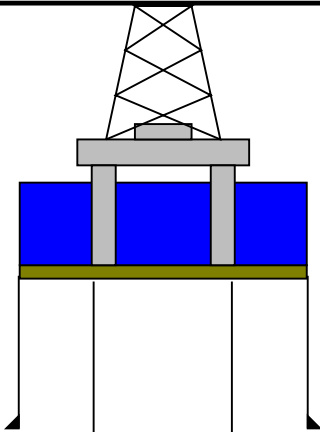
L BO-

TOOL BOTTOM

DIAMETER 6.00 I

RELATIVE TO TOOL Z

S IN METERS

Production String	(in)		(m)		Well Schematic	(m)		(in)		Casing String
	OD	ID	MD	MD		OD	ID			
Mean Sea Level						732	10.750			Surface Casing

[illegible]

Job Events Summary

MAXIS Field Log

Schlumberger Job Event Summary						
	Time	Elapsed Time	Depth (M)			File
Log Pass (down)	24-Dec-2009 15:20	000:11	3662.6 - 3811.5			PERFO_012LDP
Log Pass (up)	24-Dec-2009 15:31	000:19	3811.4 - 3630.0			PERFO_013LUP

Company: Esso Australia Pty Ltd

Well: WKF W26A

Input DLIS Files

DEFAULTPERFO_013LUP

FN:12PRODUCER24-Dec-2009 15:313811.4 M3630.0 M

Output DLIS Files

DEFAULTPERFO_015PUP

FN:14PRODUCER24-Dec-2009 16:163811.2 M3628.6 M

OP System Version: 17C0-154

SHM_GUN17C0-154

PGGT-D17C0-154

PIP SUMMARY

 Time Mark Every 60 S

Casing Collar Locator (CCL)

Tension (TENS)

-19 (----) 1

0 (LBF) 4500

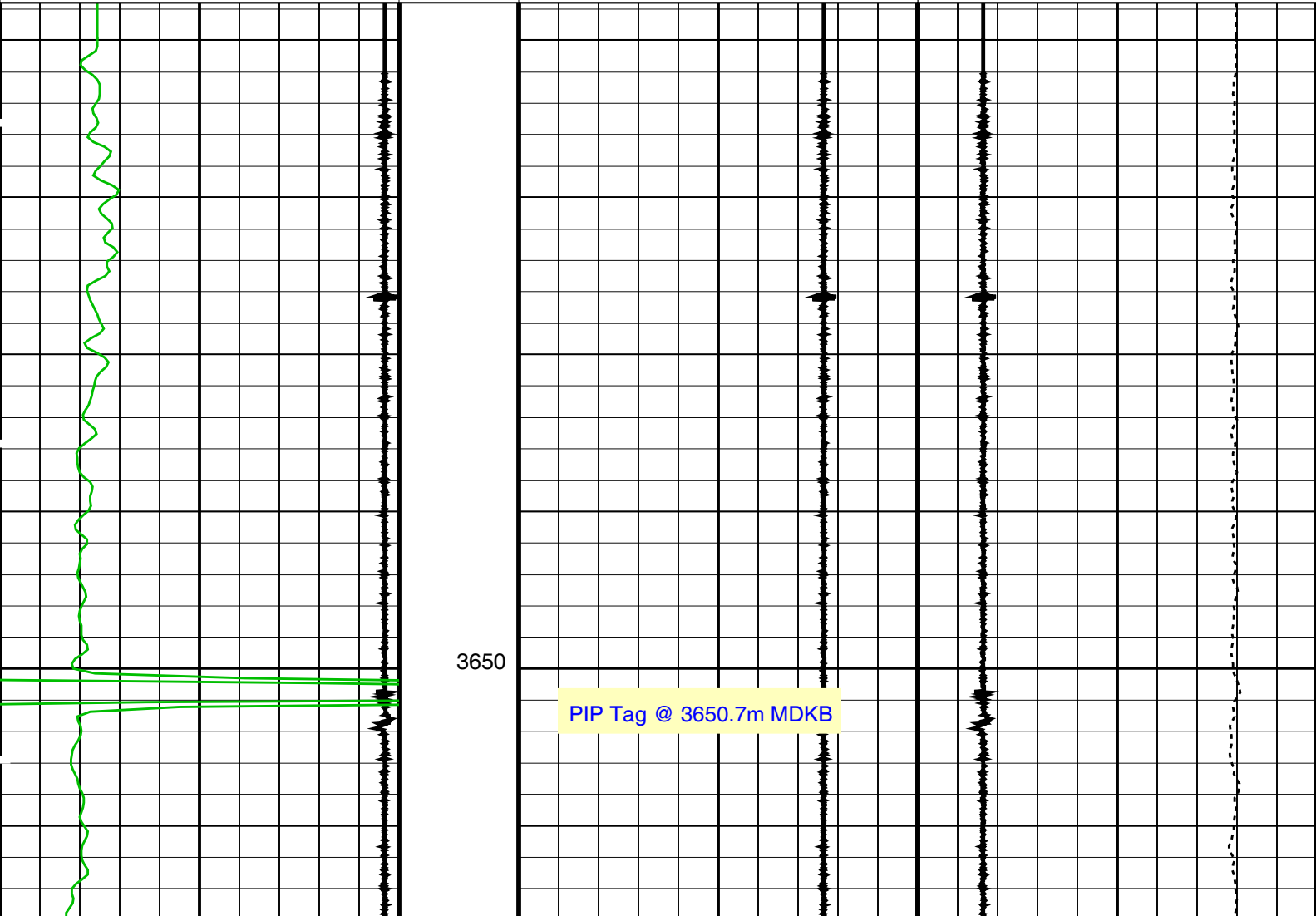
Gamma Ray (GR)

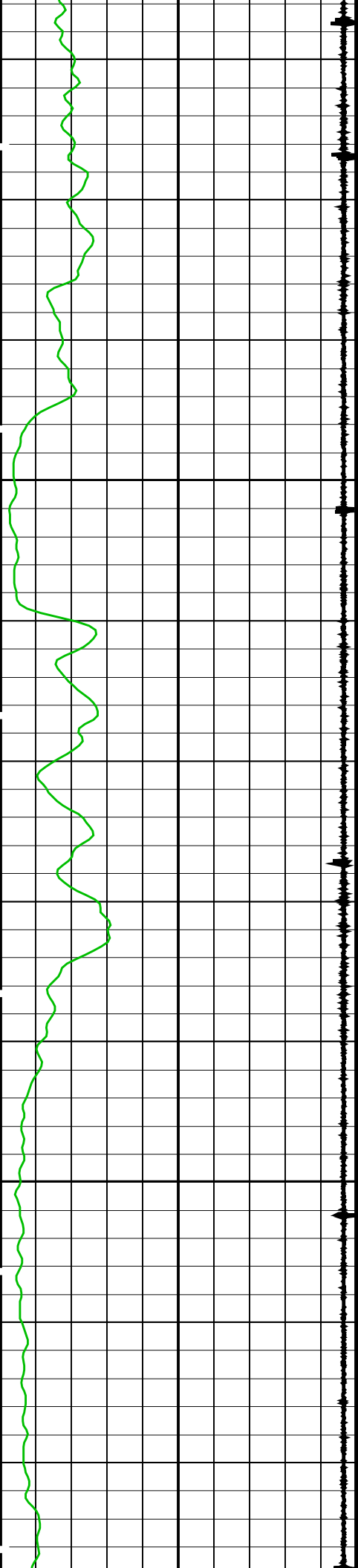
Shifted Casing Collar Locator (SCCL)

Raw Casing Collar Locator (RCCL)

0 (GAPI) 150

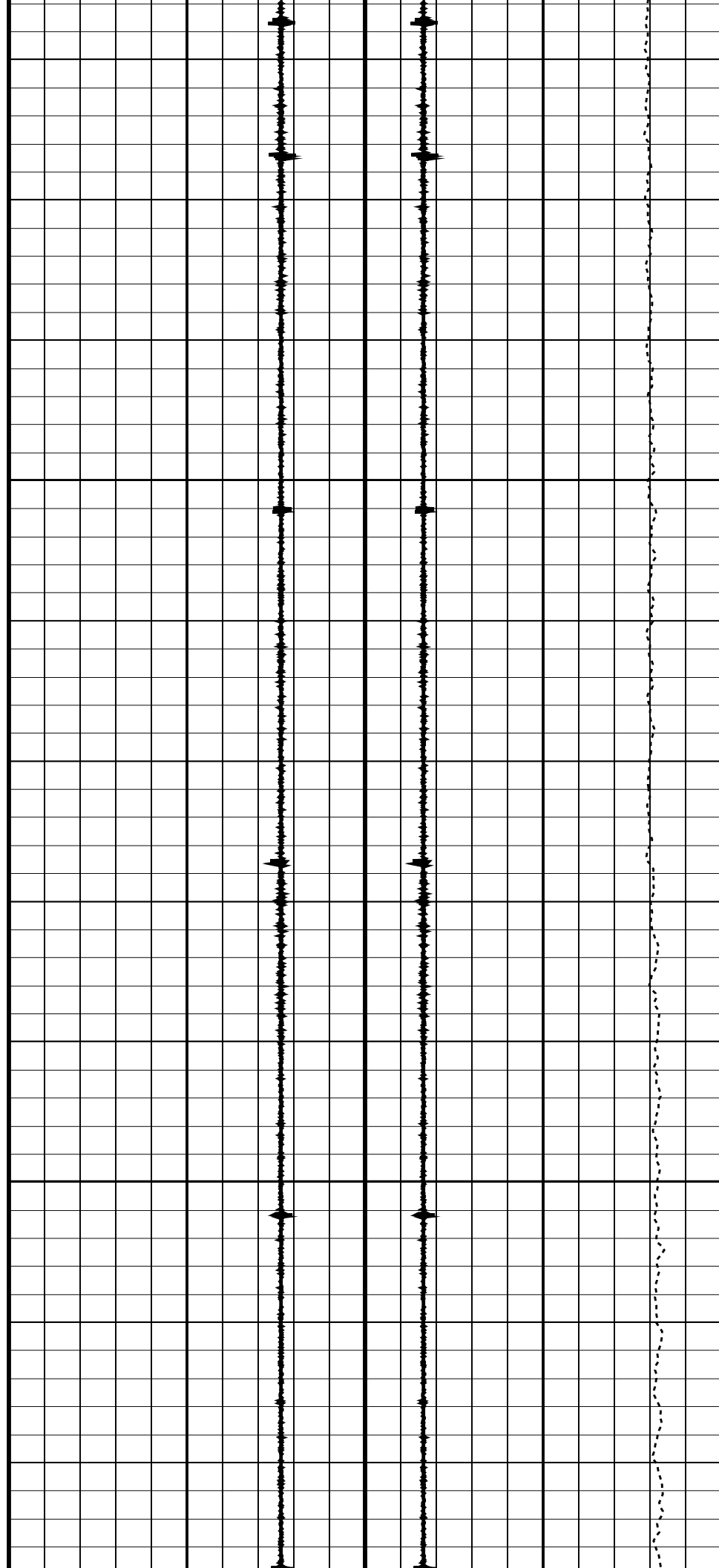
-10 (----) 10 -3 (----) 17

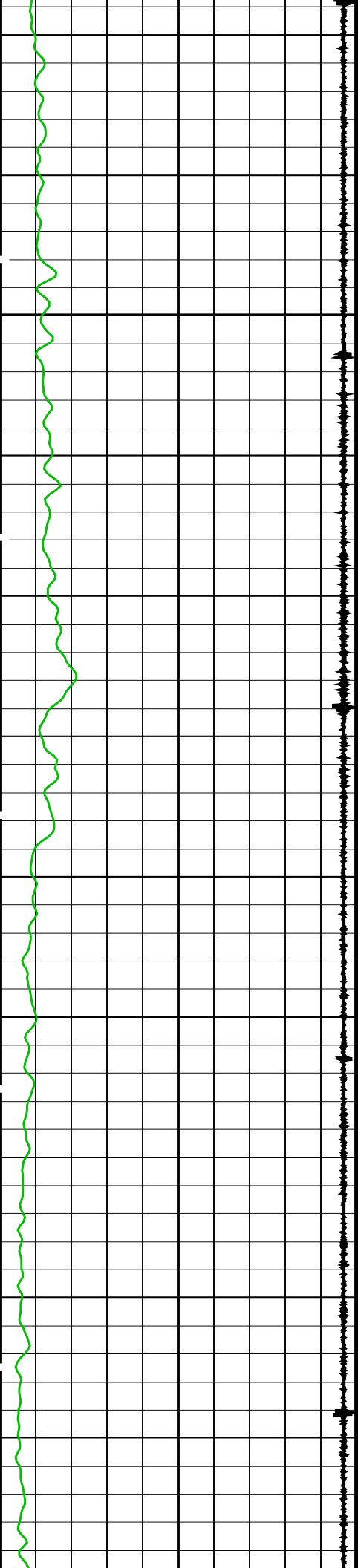




3675

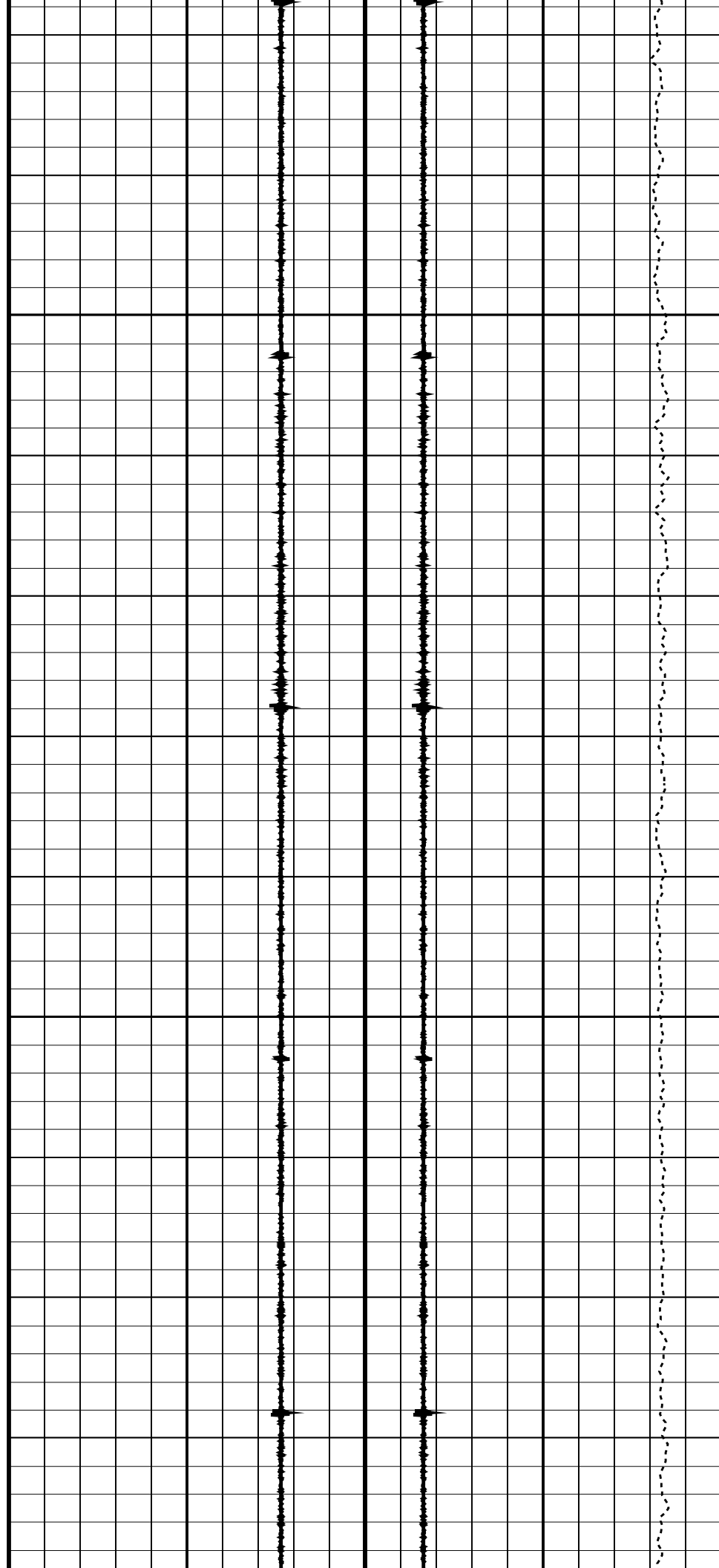
3700

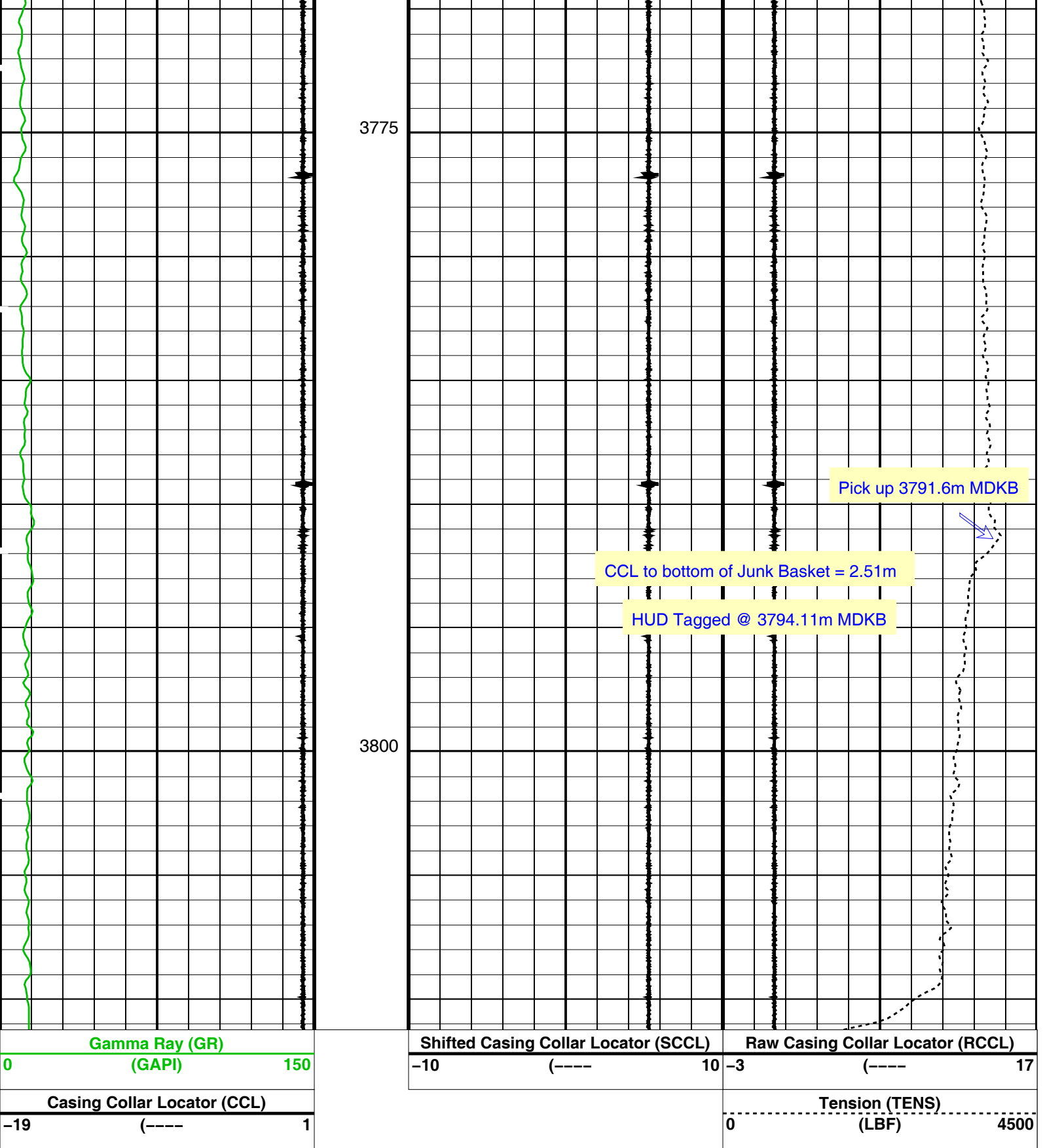




3725

3750





PIP SUMMARY

Time Mark Every 60 S

Parameters

DLIS Name	Description	Value
System and Miscellaneous		
DO	Depth Offset for Playback	-0.2 M
PP	Playback Processing	NORMAL

Format: PERFO Vertical Scale: 1:200

Graphics File Created: 24-Dec-2009 16:16

SHM_GUN	17C0-154	PGGT-D	17C0-154
Input DLIS Files			
DEFAULT	PERFO_013LUP	FN:12 PRODUCER	24-Dec-2009 15:31 3811.4 M 3630.0 M
Output DLIS Files			
DEFAULT	PERFO_015PUP	FN:14 PRODUCER	24-Dec-2009 16:16

Company:

Well:

Field:

Rig:

Country:

Esso Australia Pty Ltd

WKF W26A

West Kingfish

Rig 175

Australia

Schlumberger

Junk Basket with 6" Gauge Ring

24-Dec-09