

Company: Esso Australia Pty Ltd.

Well: W-23

Field: West KingFish

Rig: ISDL 453 / Prod 3 Country: Australia

2.5" Power Cutter  
Tubing Cutting  
Record

Rig: ISDL 453 / Prod 3  
Field: West KingFish  
Location: Gippsland  
Well: W-23  
Company: Esso Australia Pty Ltd.

LOCATION

Gippsland	Elev.: K.B. 33.4 m
Basin	G.L. -76.1 m
Bass Strait	D.F. 33.4 m
Permanent Datum:	M.S.L.
Log Measured From:	D.F.
Drilling Measured From:	D.F.
	Elev.: 0 m
	33.4 m above Perm. Datum

State: Victoria	Max. Well Deviation 39 deg	Longitude 148° 06' 15.1" E	Latitude 38° 35' 40.7" S
-----------------	----------------------------	----------------------------	--------------------------

Logging Date	6-Oct-2006
--------------	------------

Run Number	1
------------	---

Depth Driller	2662 m
---------------	--------

Schlumberger Depth	2555 m
--------------------	--------

Bottom Log Interval	2565 m
---------------------	--------

Top Log Interval	2499 m
------------------	--------

Casing Fluid Type	Inhibited Sea Water
-------------------	---------------------

Salinity	
----------	--

Density	1.02 g/cm3
---------	------------

Fluid Level	Surface
-------------	---------

BIT/CASING/TUBING STRING	
--------------------------	--

Bit Size	9.000 in
----------	----------

From	109 m
------	-------

To	2699 m
----	--------

Casing/Tubing Size	3.5 in
--------------------	--------

Weight	9.3 lbn/ft
--------	------------

Grade	N-80
-------	------

From	11.7 m
------	--------

To	2567.5 m
----	----------

Maximum Recorded Temperatures	
-------------------------------	--

Logger On Bottom	6-Oct-2006	9:45
------------------	------------	------

Unit Number	41	Prod 3 / AUSL
-------------	----	---------------

Recorded By	S Gilbert
-------------	-----------

Witnessed By	G Campbell,
--------------	-------------

Run 1

PVT DATA

Oil Density	
Water Salinity	
Gas Gravity	
Bo	
Bw	
1/Bg	
Bubble Point Pressure	
Bubble Point Temperature	
Solution GOR	
Maximum Deviation	39 deg

CEMENTING DATA

Primary/Squeeze	Primary
Casing String No	
Lead Cement Type	
Volume	
Density	
Water Loss	
Additives	
Tail Cement Type	
Volume	
Density	
Water Loss	
Additives	

Expected Cement Top

Logging Date	
--------------	--

Run Number	
------------	--

Depth Driller	
---------------	--

Schlumberger Depth	
--------------------	--

Bottom Log Interval	
---------------------	--

Top Log Interval	
------------------	--

Casing Fluid Type	
-------------------	--

Salinity	
----------	--

Density	
---------	--

Fluid Level	
-------------	--

BIT/CASING/TUBING STRING	
--------------------------	--

Bit Size	
----------	--

From	
------	--

To	
----	--

Casing/Tubing Size	
--------------------	--

Weight	
--------	--

Grade	
-------	--

From	
------	--

To	
----	--

Maximum Recorded Temperatures	
-------------------------------	--

Logger On Bottom	
------------------	--

Unit Number	
-------------	--

Recorded By	
-------------	--

Witnessed By	
--------------	--

## DEPTH SUMMARY LISTING

Date Created: 2-OCT-2006 10:29:00

### Depth System Equipment

Depth Measuring Device	Tension Device	Logging Cable
Type: IDW-E Serial Number: 727 Calibration Date: 13-Jul-2006 Calibrator Serial Number: 1009 Calibration Cable Type: 7-46V-XS Wheel Correction 1: 3 Wheel Correction 2: 4	Type: CMTD-B/A Serial Number: 1721 Calibration Date: 29-sep-2006 Calibrator Serial Number: 1051 Calibration Gain: 0.93 Calibration Offset: 601.00	Type: 7-46P Serial Number: 76075 Length: 7315.20 M Conveyance Method: Wireline Rig Type: Offshore_Fixed

### Depth Control Parameters

Log Sequence:	First Log In the Well
Reference Log Name :	Tubeing Schematic
Reference Log Run Number :	
Reference Log Date :	25-01-1983

### Depth Control Remarks

1. All Schlumberger Depth Control Policies Followed.
2. IDW used as Primary Depth Control
3. Z Chart used as secondary depth control
4.
5.
6.

#### DISCLAIMER

THE USE OF AND RELIANCE UPON THIS RECORDED-DATA BY THE HEREIN NAMED COMPANY (AND ANY OF ITS AFFILIATES, PARTNERS, REPRESENTATIVES, AGENTS, CONSULTANTS AND EMPLOYEES) IS SUBJECT TO THE TERMS AND CONDITIONS AGREED UPON BETWEEN SCHLUMBERGER AND THE COMPANY, INCLUDING: (a) RESTRICTIONS ON USE OF THE RECORDED-DATA; (b) DISCLAIMERS AND WAIVERS OF WARRANTIES AND REPRESENTATIONS REGARDING COMPANY'S USE OF AND RELIANCE UPON THE RECORDED-DATA; AND (c) CUSTOMER'S FULL AND SOLE RESPONSIBILITY FOR ANY INFERENCE DRAWN OR DECISION MADE IN CONNECTION WITH THE USE OF THIS RECORDED-DATA.

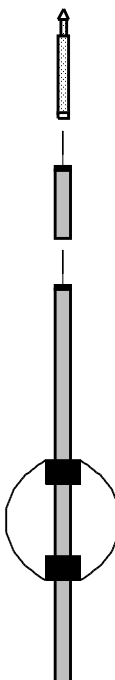
OTHER SERVICES1
OS1: None
OS2:
OS3:
OS4:
OS5:

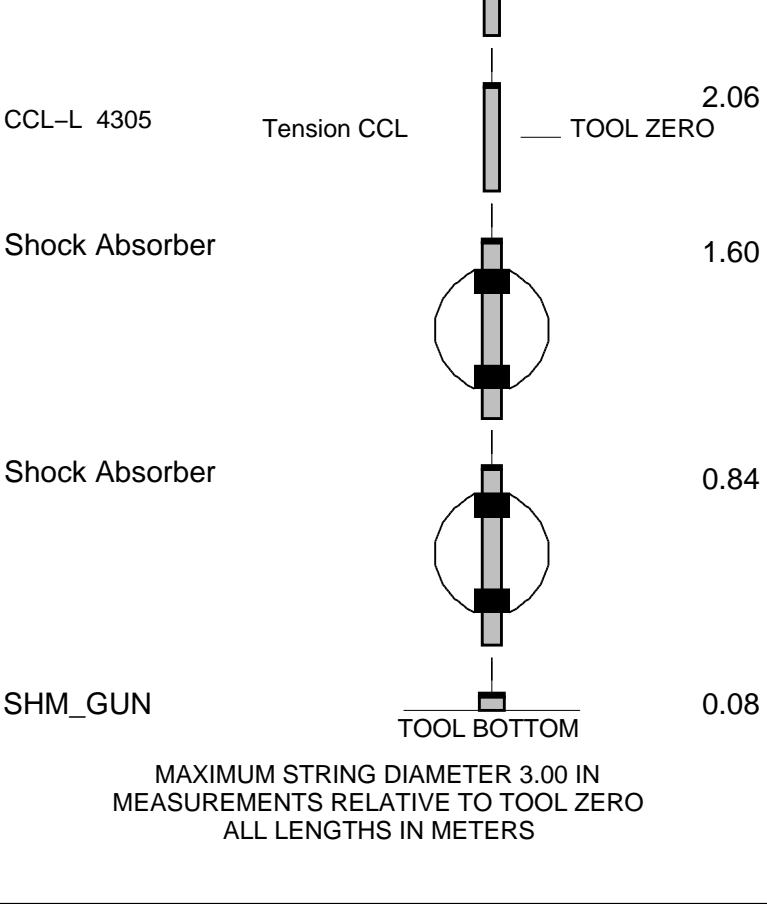
REMARKS: RUN NUMBER 1
Log Correlated to Tubeing Schematic
Objectives : Cut the 3.5' tubeing above the Packer @ 2554.75m MDKB
With a 2.5' Power cutter
CCL to top Shot : 1.9m
CCL Stop Depth : 3552.85
Shot Fired at : 2554.75

Schlumberger Crew : R Murray , C Harris (Days)  
G Martin , L Anderson (Nights)

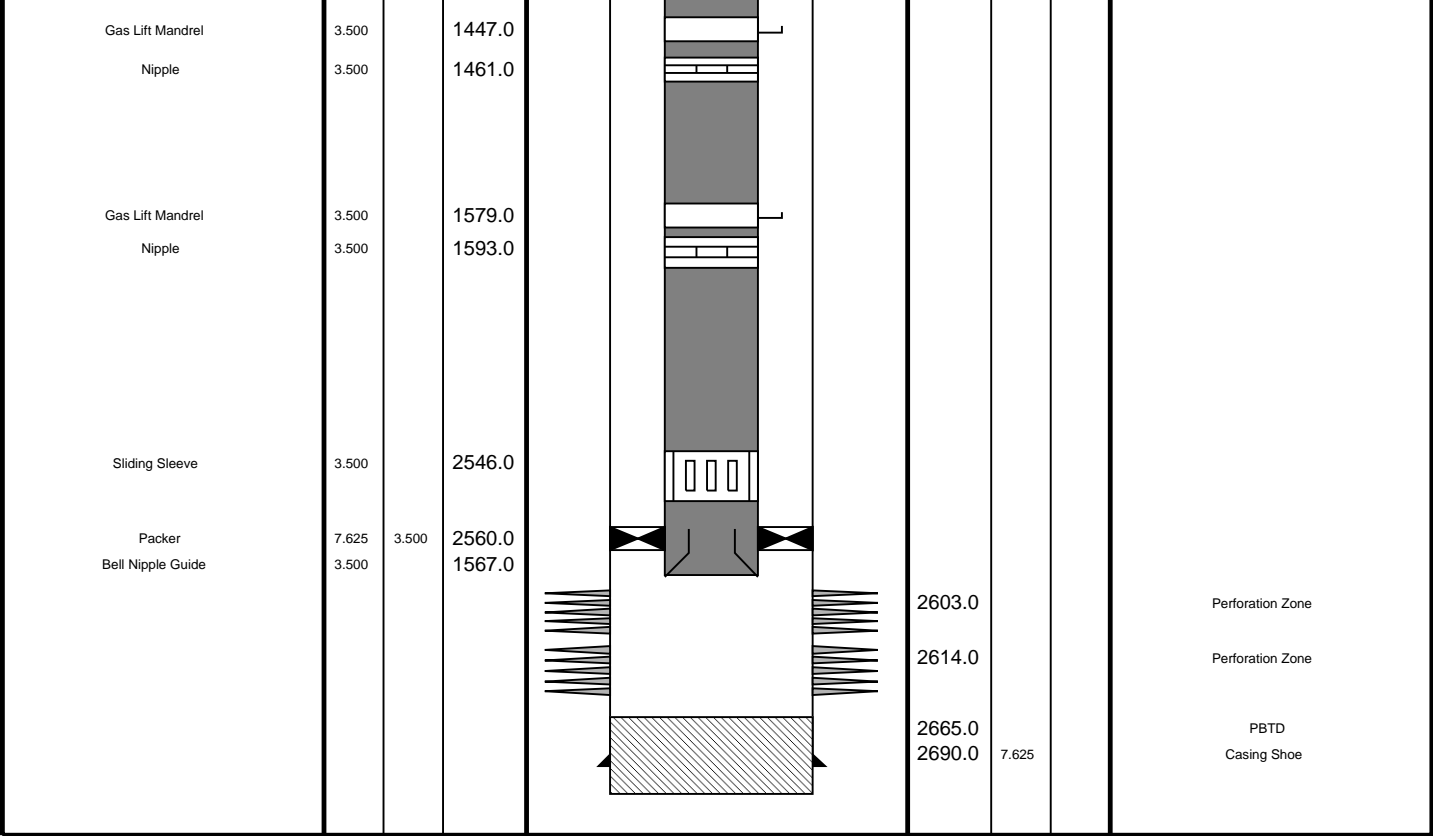
RUN 1					
SERVICE ORDER #:			AUSL06336251		
PROGRAM VERSION:			14C0-302		
FLUID LEVEL:			0 m		
LOGGED INTERVAL	START	STOP	LOGGED INTERVAL	START	STOP

EQUIPMENT DESCRIPTION

RUN 1		RUN 2	
SURFACE EQUIPMENT			
DOWNHOLE EQUIPMENT			
MH-22		4.67	
AH-38		4.19	
EQF-43		3.89	



Production String	(in) (ft)			Well Schematic	(ft) (in)			Casing String
	OD	ID	MD		MD	OD	ID	
Tubing Tubing Hanger	3.500 7.620	2.992 3.500	11.7 13.0		13.0 13.1	10.750 10.750 7.625	7.625	Casing String Liner Hanger Casing String
SSSV	3.500		454.0					
Gas Lift Mandrel	3.500		826.0		651.0	10.750		Casing Shoe
Nipple	3.500		840.0					
Gas Lift Mandrel	3.500		1343.0					
Nipple	3.500		1358.0					



# Job Events Summary

MAXIS Field Log

## Schlumberger Job Event Summary

Time	Elapsed Time	Depth (M)	File
Log Pass (up)	6-Oct-2006 9:11	000:05	2565.0 - 2510.6 PERFO_012LUP
Log Pass (up)	6-Oct-2006 9:21	000:27	2564.7 - 2496.3 PERFO_013LUP

Company: Esso Australia Pty Ltd. Well: W-23

Output DLIS Files

DEFAULT PERFO\_013LUP FN:10 PRODUCER 06-Oct-2006 09:21 2564.7 M 2496.3 M

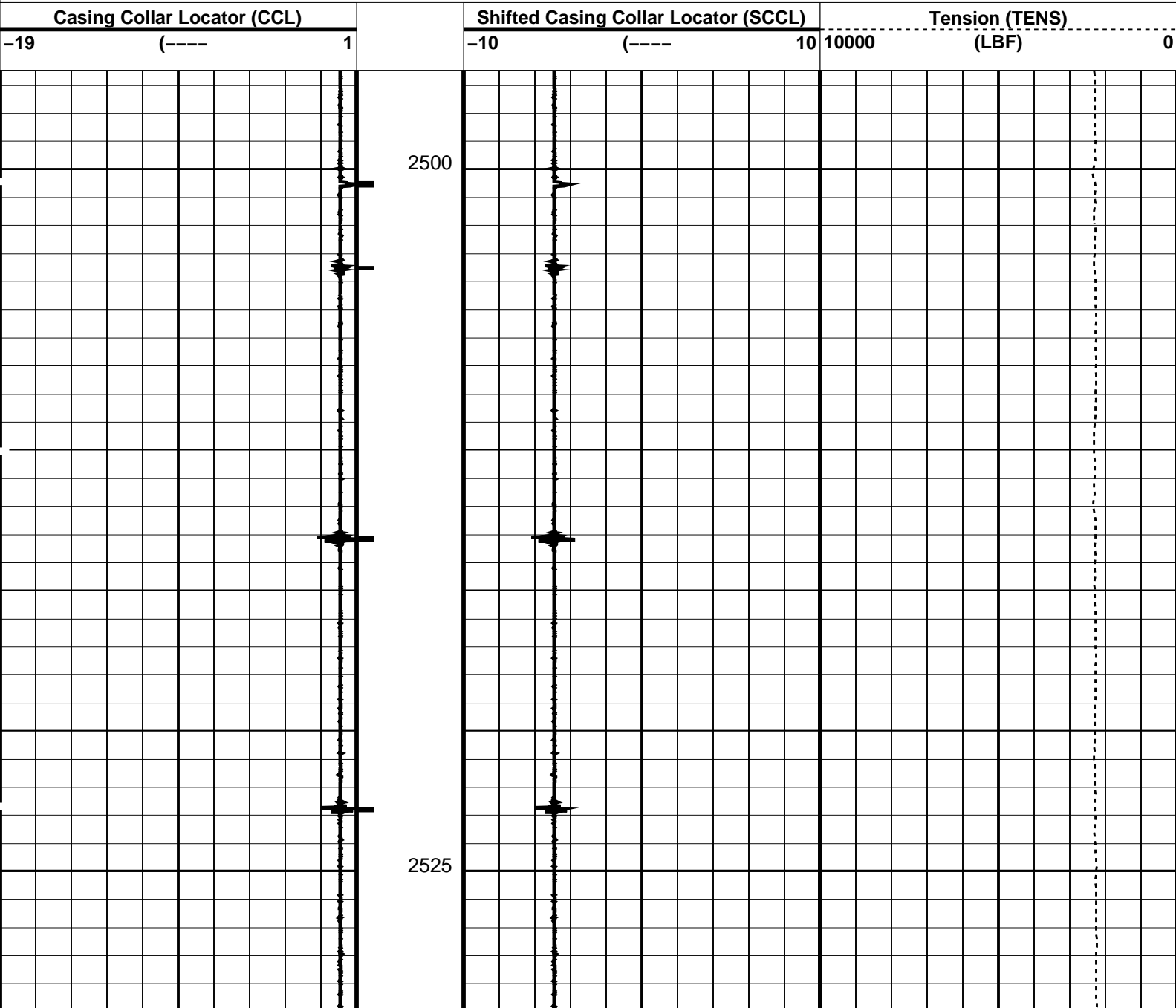
OP System Version: 14C0-302  
MCM

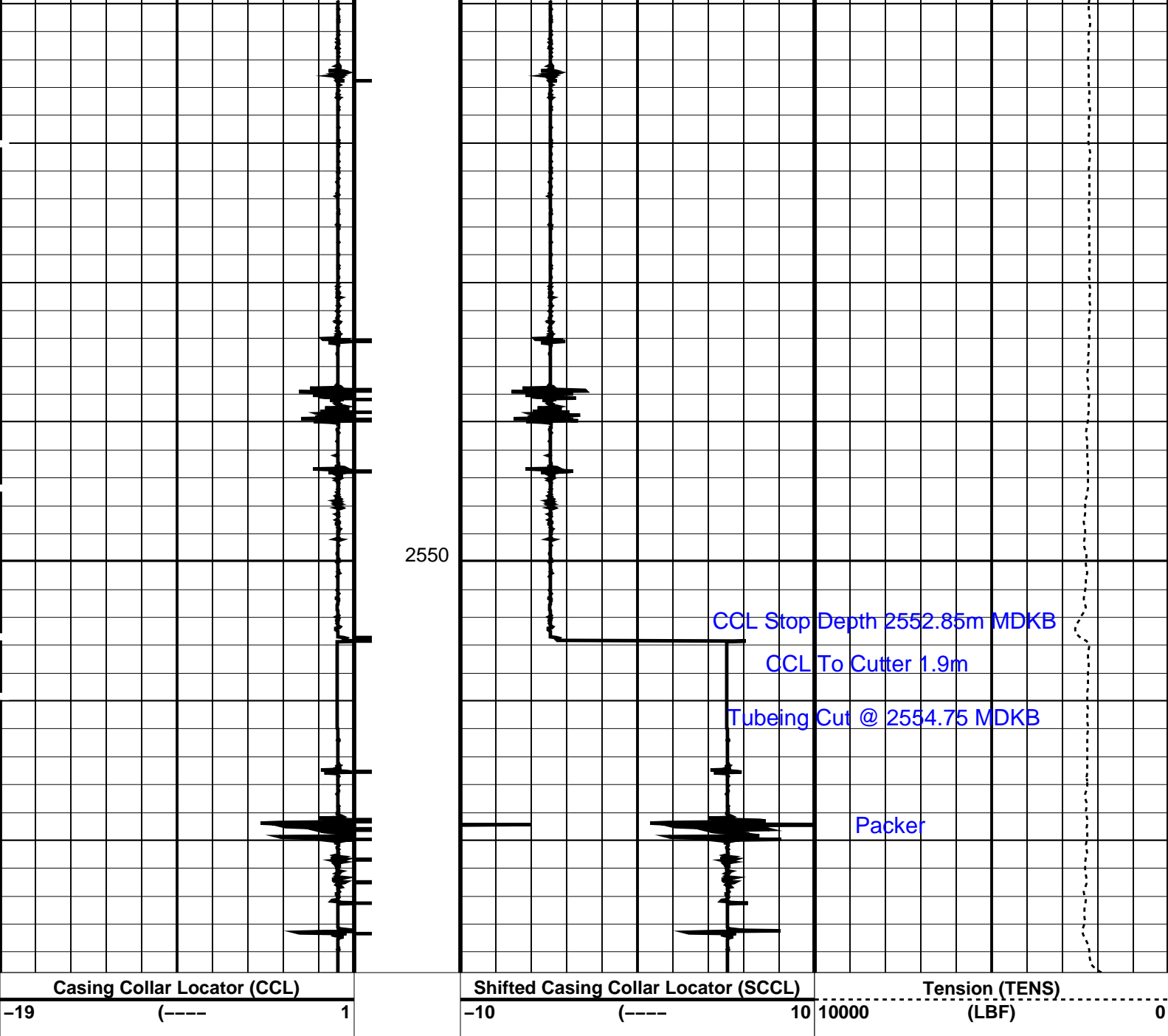
SHM\_GUN 14C0-302 CCL-L 14C0-302

PIP SUMMARY

Casing Collars

Time Mark Every 60 S





PIP SUMMARY

Time Mark Every 60 S

Casing Collars

Parameters			
DLIS Name		Description	Value
CCL-L: Casing Collar Locator			
CCLD		CCL reset delay	12 IN
CCLT		CCL Detection Level	0.3 V
Format: PERFO	Vertical Scale: 1:200	Graphics File Created: 06-Oct-2006 09:21	
OP System Version: 14C0-302			
MCM			
SHM_GUN	14C0-302	CCL-L	14C0-302
Output DLIS Files			
DEFAULT	PERFO_013LUP	FN:10	PRODUCER 06-Oct-2006 09:21

MAXIS Field Log

Company: Esso Australia Pty Ltd.

Well: W-23

**Output DLIS Files**

DEFAULT      PERFO\_012LUP      FN:9      PRODUCER      06-Oct-2006 09:11      2565.0 M      2510.6 M

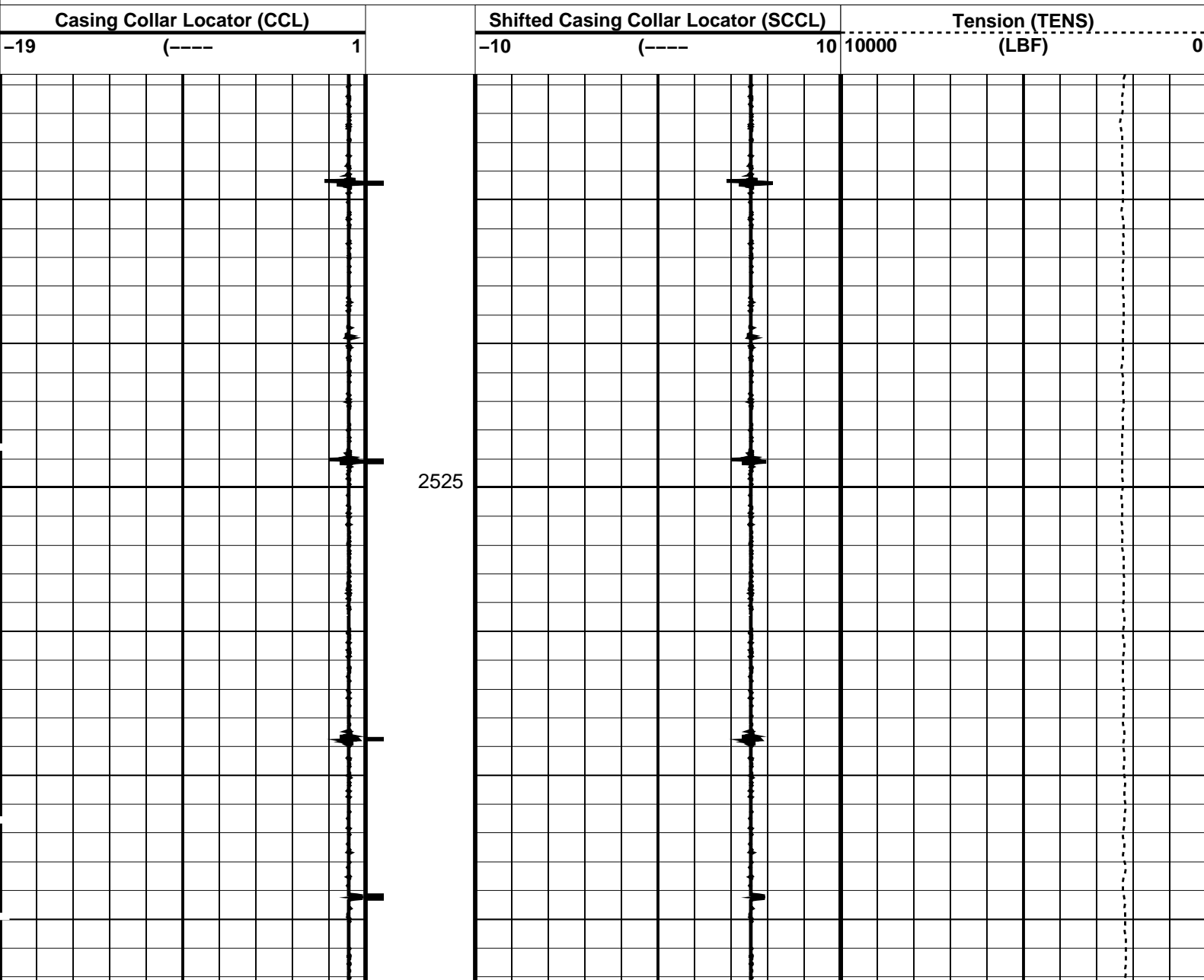
**OP System Version: 14C0-302**  
MCM

SHM\_GUN      14C0-302      CCL-L      14C0-302

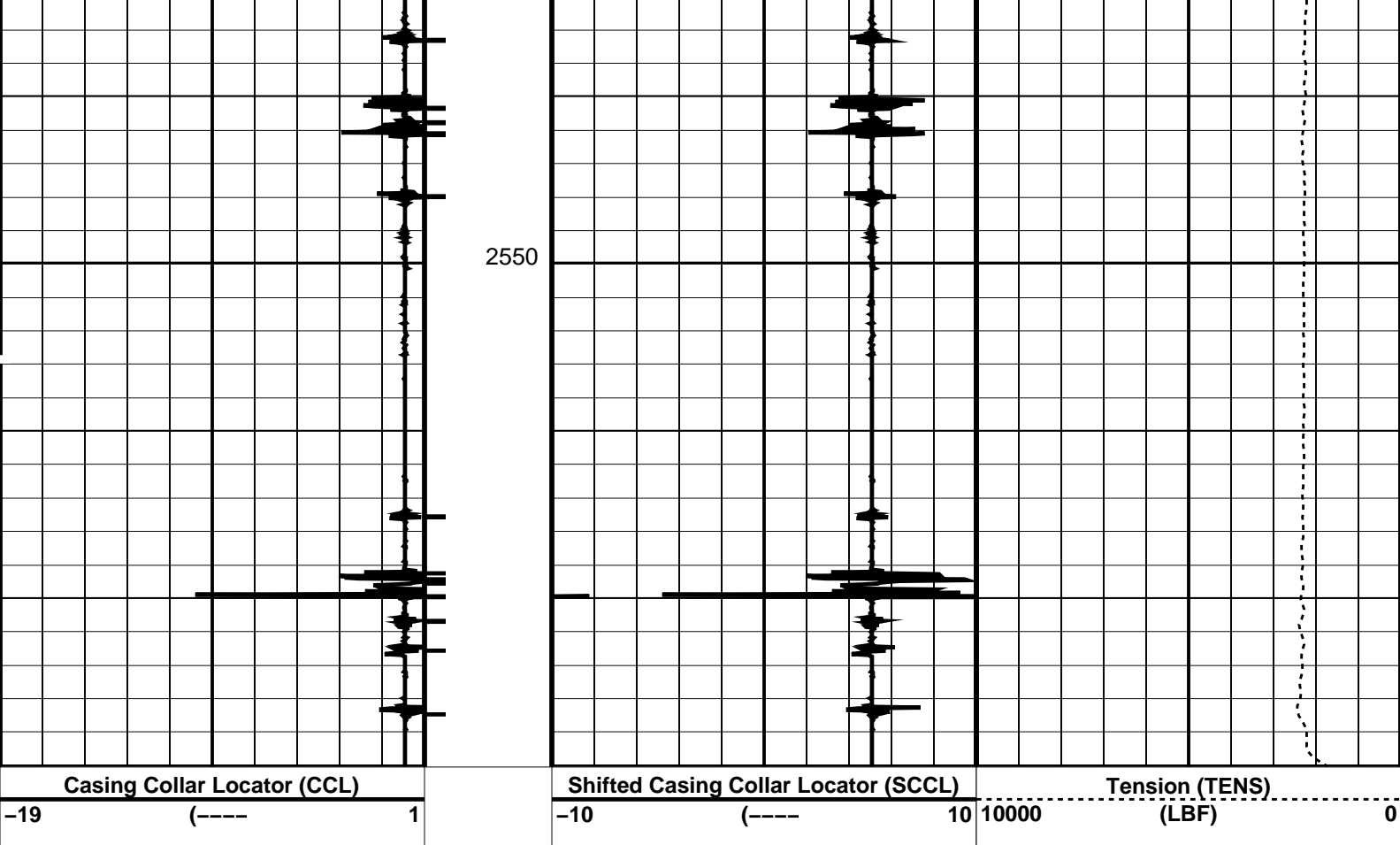
**PIP SUMMARY**

└─ Casing Collars

Time Mark Every 60 S







PIP SUMMARY

Time Mark Every 60 S

Parameters

DLIS Name	Description	Value
CCLD	CCL-L: Casing Collar Locator	12 IN
CCLT	CCL reset delay	0.3 V
	CCL Detection Level	

Format: PERFO Vertical Scale: 1:200 Graphics File Created: 06-Oct-2006 09:11

OP System Version: 14C0-302

MCM

SHM\_GUN 14C0-302 CCL-L 14C0-302

Output DLIS Files

DEFAULT PERFO\_012LUP FN:9 PRODUCER 06-Oct-2006 09:11

Company: Esso Australia Pty Ltd.

Schlumberger

Well: W-23  
Field: West KingFish  
Rig: ISDL 453 / Prod 3  
Country: Australia

2.5" Power Cutter  
Tubing Cutting  
Record