

															Pig:	Bred4 / Crano	
--	--	--	--	--	--	--	--	--	--	--	--	--	--	--	------	---------------	--

Company: Esso Australia Pty Ltd.

W-12

Well: West Kingfish

Field: Prod4 / Crane

Country: Australia

RST-C Sigma
Carbon Oxygen
Survey

Field: West Kingfish
Location: Gippsland
Well: W-12
Company: Esso Australia Pty Ltd.

LOCATION

Gippsland	Elev.: K.B. 32.50 m
Basin	G.L. -76.13 m
Bass Strait	D.F. 32.50 m
Permanent Datum:	M.S.L. _____
Log Measured From:	D.F. _____
Drilling Measured From:	D.F. _____
State: Victoria	Max. Well Deviation 11 deg
	Longitude 148 06'15.1"E
	Latitude 038 35'40.7"S

Logging Date

Run Number

Depth Driller

Schlumberger Depth

Bottom Log Interval

Top Log Interval

Casing Fluid Type

Salinity

Density

Fluid Level

BIT/CASING/TUBING STRING

Bit Size

From

To

Casing/Tubing Size

Weight 29.7 lbm/ft

Grade N-80

From 12.3 m

To 2392 m

Maximum Recorded Temperatures

Logger On Bottom

Unit Number

Recorded By

Witnessed By

B White.

PVT DATA

Oil Density	
Water Salinity	
Gas Gravity	
Bo	
Bw	
1/Bg	
Bubble Point Pressure	
Bubble Point Temperature	
Solution GOR	
Maximum Deviation	11 deg
CEMENTING DATA	
Primary/Squeeze	Primary
Casing String No	
Lead Cement Type	
Volume	
Density	
Water Loss	
Additives	
Tail Cement Type	
Volume	
Density	
Water Loss	
Additives	
Expected Cement Top	

Logging Date

Run Number

Depth Driller

Schlumberger Depth

Bottom Log Interval

Top Log Interval

Casing Fluid Type

Salinity

Density

Fluid Level

BIT/CASING/TUBING STRING

Bit Size

From

To

Casing/Tubing Size

Weight

Grade

From

To

Maximum Recorded Temperatures

Logger On Bottom

Unit Number

Recorded By

Witnessed By

B White.

DEPTH SUMMARY LISTING

Depth System Equipment

Depth Measuring Device		Tension Device		Logging Cable	
Type:	IDW-EB	Type:	PSDS/OSDS	Type:	2-32ZT
Serial Number:	6373	Serial Number:	325357	Serial Number:	208196
Calibration Date:	04-Jan-2007	Calibration Date:	04-Nov-2008	Length:	4100 M
Calibrator Serial Number:	9	Calibrator Serial Number:	1174	Conveyance Method: Wireline Rig Type: Rigless	
Calibration Cable Type:	2-32ZT	Calibration Gain:	0.90		
Wheel Correction 1:	-2	Calibration Offset:	-115.00		
Wheel Correction 2:	-4				

Depth Control Parameters

Log Sequence:	Subsequent Log In the Well
Reference Log Run Number:	1
Reference Log Date:	08-Oct-2002

Depth Control Remarks

1. IDW-EB 6373 used as primary depth control.
2. Z-Chart as back-up.

DISCLAIMER

THE USE OF AND RELIANCE UPON THIS RECORDED-DATA BY THE HEREIN NAMED COMPANY (AND ANY OF ITS AFFILIATES, PARTNERS, REPRESENTATIVES, AGENTS, CONSULTANTS AND EMPLOYEES) IS SUBJECT TO THE TERMS AND CONDITIONS AGREED UPON BETWEEN SCHLUMBERGER AND THE COMPANY, INCLUDING: (a) RESTRICTIONS ON USE OF THE RECORDED-DATA; (b) DISCLAIMERS AND WAIVERS OF WARRANTIES AND REPRESENTATIONS REGARDING COMPANY'S USE OF AND RELIANCE UPON THE RECORDED-DATA; AND (c) CUSTOMER'S FULL AND SOLE RESPONSIBILITY FOR ANY INFERENCE DRAWN OR DECISION MADE IN CONNECTION WITH THE USE OF THIS RECORDED-DATA.

OTHER SERVICES ¹
OS1: None

REMARKS: RUN NUMBER 1
Log correlated to ExxonMobil petrophysical analysis supplied
with logging program.Dated 08-Oct-2002.
Maximum well deviation = 11 degree's at 334m MDKB.
Pass one was a GR pass from HUD 2305 m to 2245m MDKB.
SBHP = 3030 psia,SBHT = 224 degf.
Pass 2,RST-C Sigma pass over the same interval at 900 ft/hr.
Passes 3 to 7 were RST-C Carbon Oxygen passes over the
same interval at 150 ft/hr.

Pressure and temperature data supplied with each pass.

Crew : J light,C Shiells.

RUN 1

SERVICE ORDER #: Ausl08602244
PROGRAM VERSION: 16C0-147
FLUID LEVEL: 2 m

LOGGED INTERVAL	START	STOP
-----------------	-------	------

EQUIPMENT DESCRIPTION

RUN 1

SURFACE EQUIPMENT

WITM-A 3918
PSC_16MHZ 3918

DOWNHOLE EQUIPMENT

AH-SWBS-B 785		13.31
AH-SWBS-B 785		


AH-SWBS-B 785		12.62
AH-SWBS-B 785		



AH-SWBS-B 787		11.94
AH-SWBS-B 787		


AH-SWBS-B 788		11.25
AH-SWBS-B 788		

AH-SWBS-B 789		10.57
AH-SWBS-B 789		

MH-SWHS-A 759	Detail MT		9.88
MH-SWHS-A 759	TelStatus		
	CTEM		

PSPT-B 3918			9.54
-------------	--	---	------

PSC-A 3918			
PSPT-B 3918			
PSTC 3764			
PBMS-B 3918			
CQG_F_Mano 3918	GR		8.41
RTD Thermometer 3918			
GR 3918			
CCL 3918			
PBMS 3918	Well Temp		7.48
	CQG Manom		7.37
	CCL		7.25
	PBMS PSTC		7.02

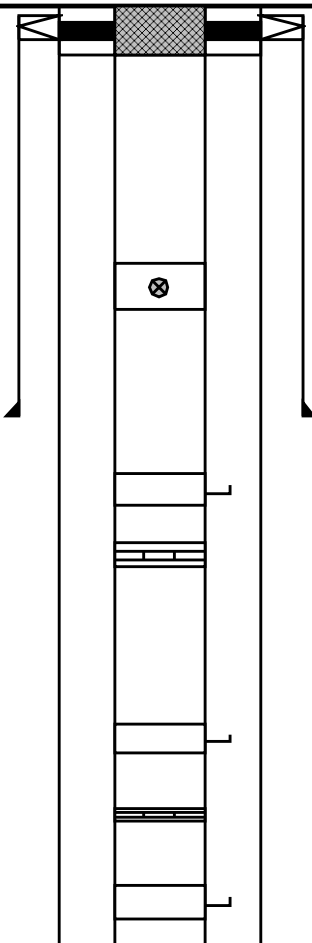
RST-C BLK1			7.02
RSCH-A 111			
RSC-C 132			
RSS-A 106			
RSXH-A 145			
RSX-C 132			

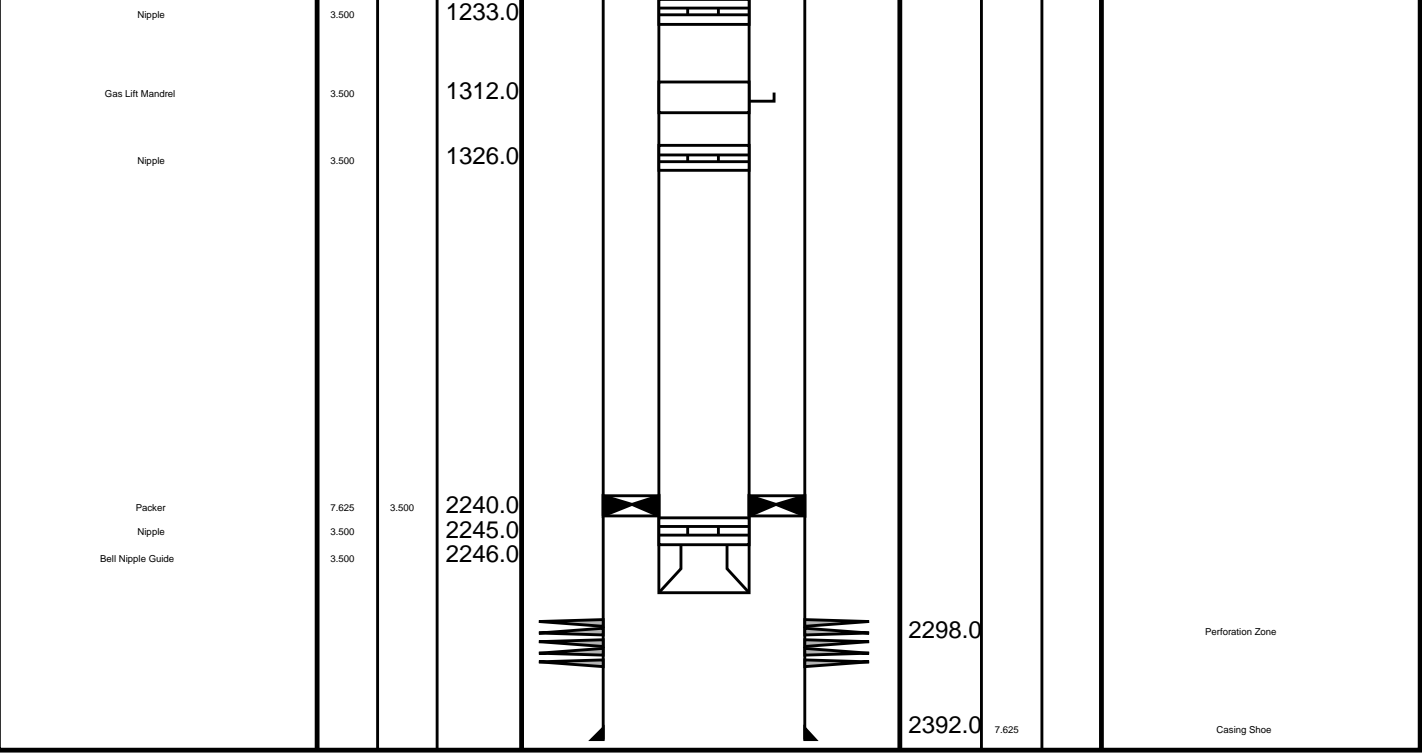
RSC-A Far
RSC-A PNG
RSC-A Nea
RSX-A PNG

4.24
4.09

Tension HV 0.00
TOOL ZERO

MAXIMUM STRING DIAMETER 1.72 IN
MEASUREMENTS RELATIVE TO TOOL ZERO
ALL LENGTHS IN METERS

Production String	(in)		(m)	Well Schematic	(m)	(in)		Casing String	
	OD	ID	MD		MD	OD	ID		
Tubing Hanger Tubing	7.625 3.500	3.500	11.0 12.5		13.0 12.3	10.750 10.750	7.625	Casing String Liner Hanger	
Shutin Valve	3.500		448.0						
Gas Lift Mandrel	3.500		771.0		606.0	10.750			Casing Shoe
Nipple	3.500		785.0						
Gas Lift Mandrel	3.500		1163.0						
Nipple	3.500		1177.0						
Gas Lift Mandrel	3.500		1218.0						



Job Event Summary

MAXIS Field Log

Schlumberger Job Event Summary

	Time	Elapsed Time	Depth (M)	File
Log Pass (down)	13-Nov-2008 12:04	001:01	-7.3 - 2304.3	RST_PSP_010LDP
Log Pass (up)	13-Nov-2008 13:05	000:11	2308.3 - 2238.0	RST_PSP_011LUP
Log Pass (up)	13-Nov-2008 13:29	000:15	2307.3 - 2243.2	RST_PSP_014LUP
Log Pass (up)	13-Nov-2008 13:48	001:01	2307.3 - 2250.5	RST_PSP_015LUP
Log Pass (up)	13-Nov-2008 14:50	000:55	2307.2 - 2251.3	RST_PSP_016LUP
Log Pass (up)	13-Nov-2008 15:46	001:08	2307.8 - 2252.2	RST_PSP_017LUP
Log Pass (up)	13-Nov-2008 16:55	001:09	2307.5 - 2250.5	RST_PSP_018LUP
Log Pass (up)	13-Nov-2008 18:05	001:10	2307.5 - 2250.5	RST_PSP_019LUP



Carbon Oxygen Pass # 5
@ 150 ft/hr

MAXIS Field Log

Company: Esso Australia Pty Ltd. Well: W-12

Input DLIS Files

DEFAULT RST_PSP_019LUP FN:18 PRODUCER 13-Nov-2008 18:05 2307.5 M 2250.5 M

Output DLIS Files

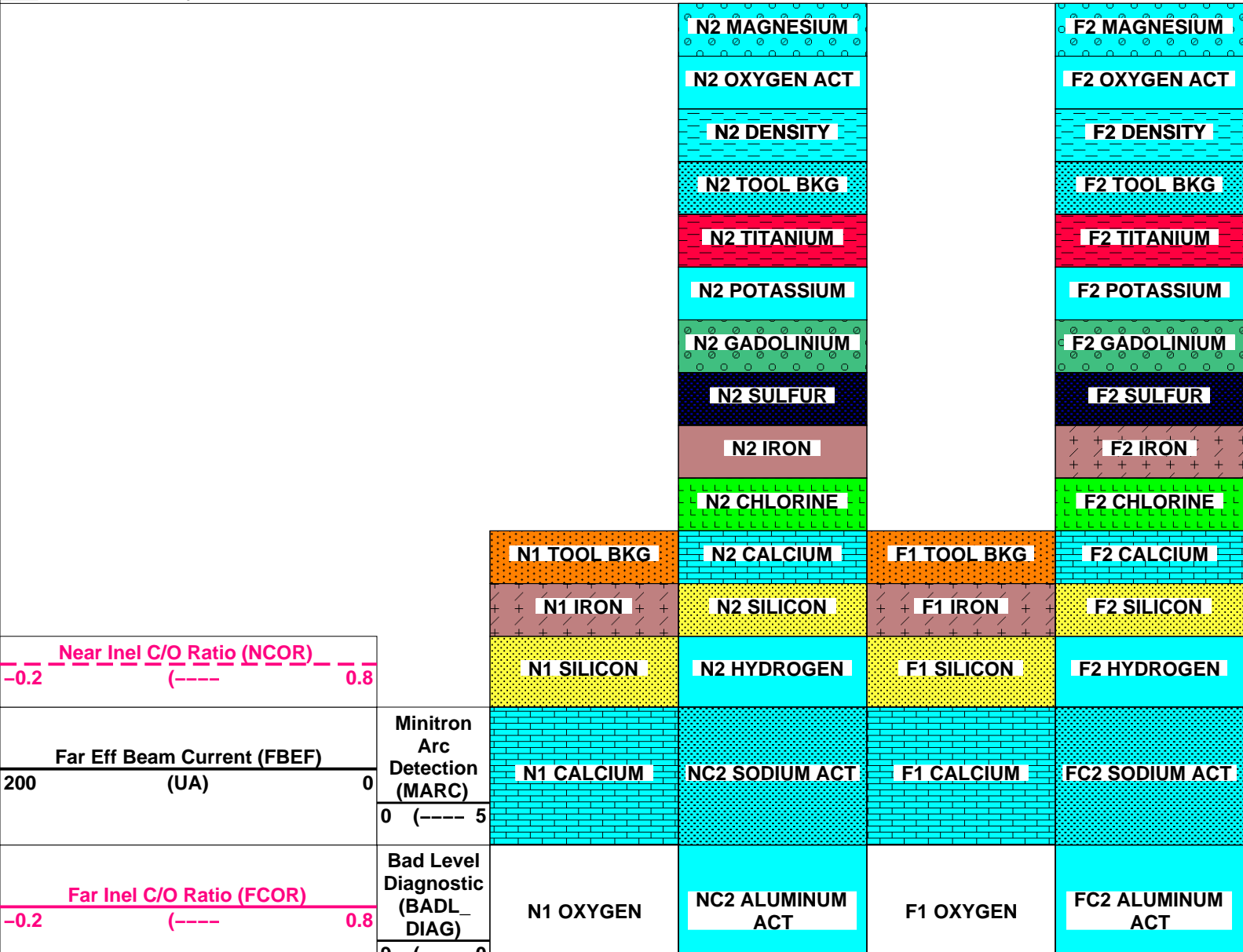
DEFAULT RST_PSP_025PUP FN:24 PRODUCER 13-Nov-2008 19:29 2306.4 M 2243.9 M

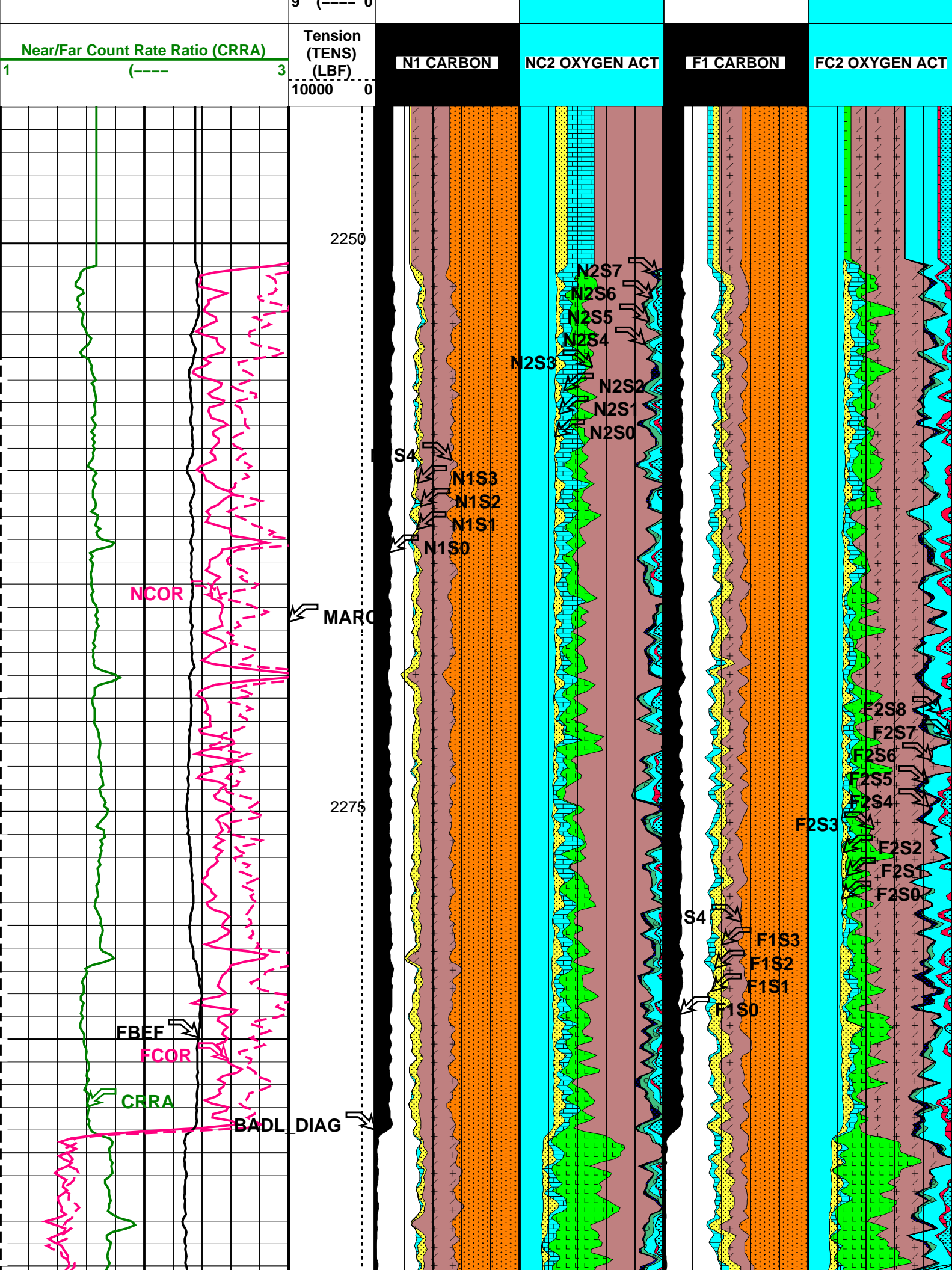
OP System Version: 16C0-147
MCM

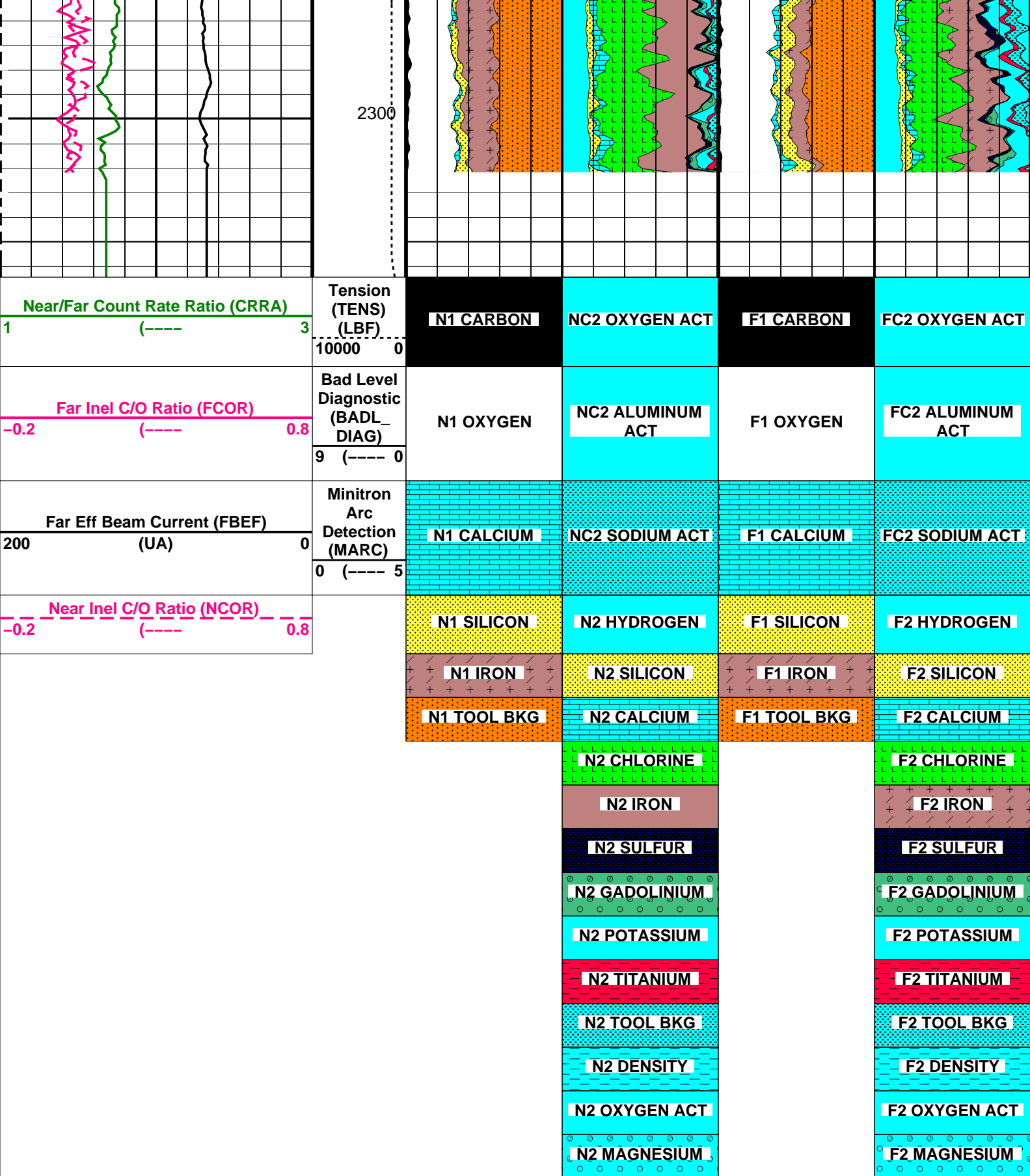
RST-C 16C0-147 PSPT-B 16C0-147

PIP SUMMARY

Time Mark Every 60 S







PIP SUMMARY


Time Mark Every 60 S

Parameters

DLIS Name	Description	Value
-----------	-------------	-------

RST-C: Reservoir Saturation Pro Tool C		
TIER_IC	RST IC Acquisition Mode	0_CO_Yield_and_Spectrolith
System and Miscellaneous		

DO PP	Depth Offset for Playback Playback Processing	-1.0 M NORMAL
Format: RST_YIELDS	Vertical Scale: 1:200	Graphics File Created: 13-Nov-2008 19:29
OP System Version: 16C0-147 MCM		
RST-C	16C0-147	PSPT-B 16C0-147
Input DLIS Files DEFAULT RST_PSP_019LUP FN:18 PRODUCER 13-Nov-2008 18:05 2307.5 M 2250.5 M		
Output DLIS Files DEFAULT RST_PSP_025PUP FN:24 PRODUCER 13-Nov-2008 19:29		



Carbon Oxygen Pass # 4
@ 150 ft/hr

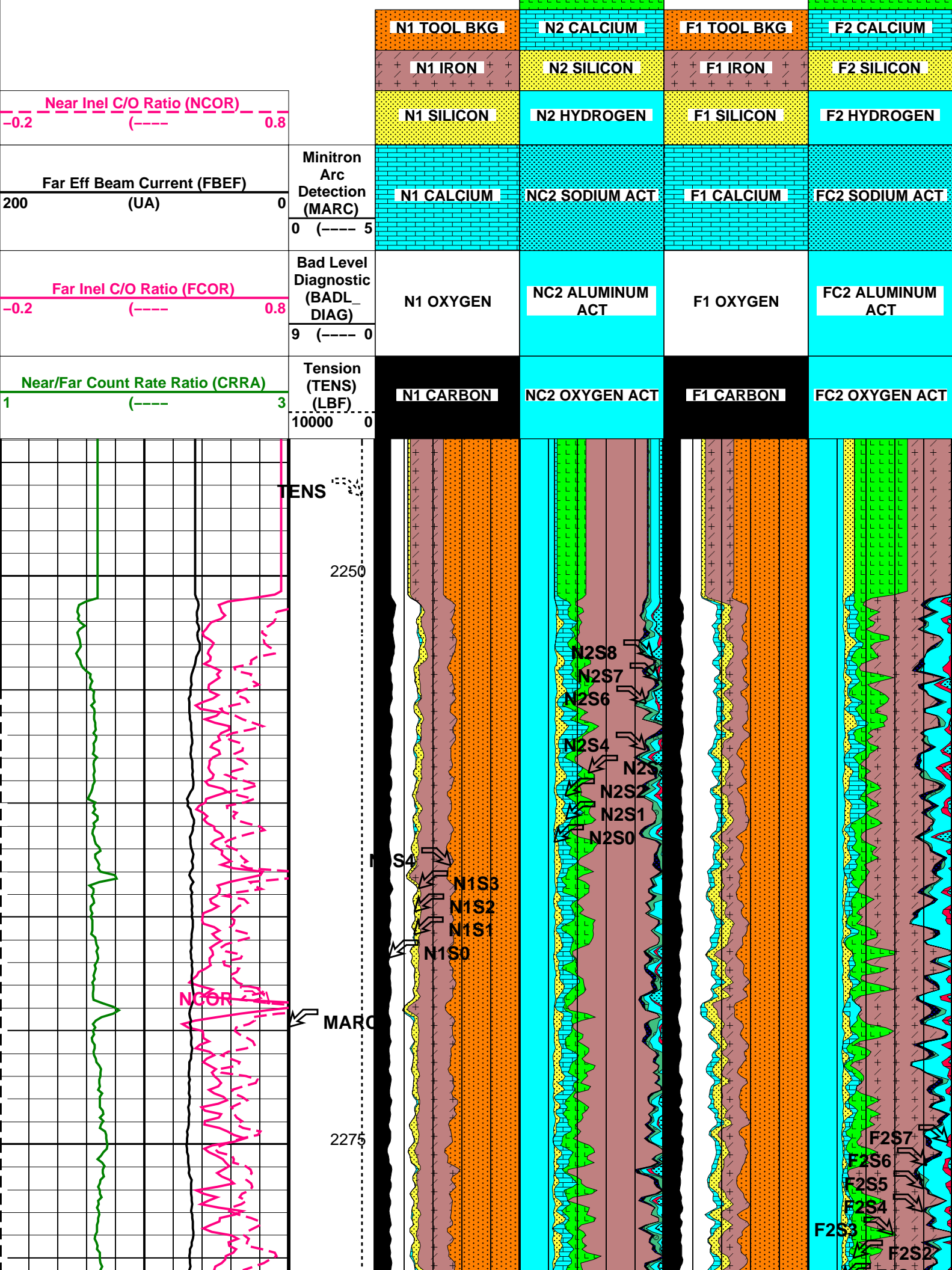
MAXIS Field Log

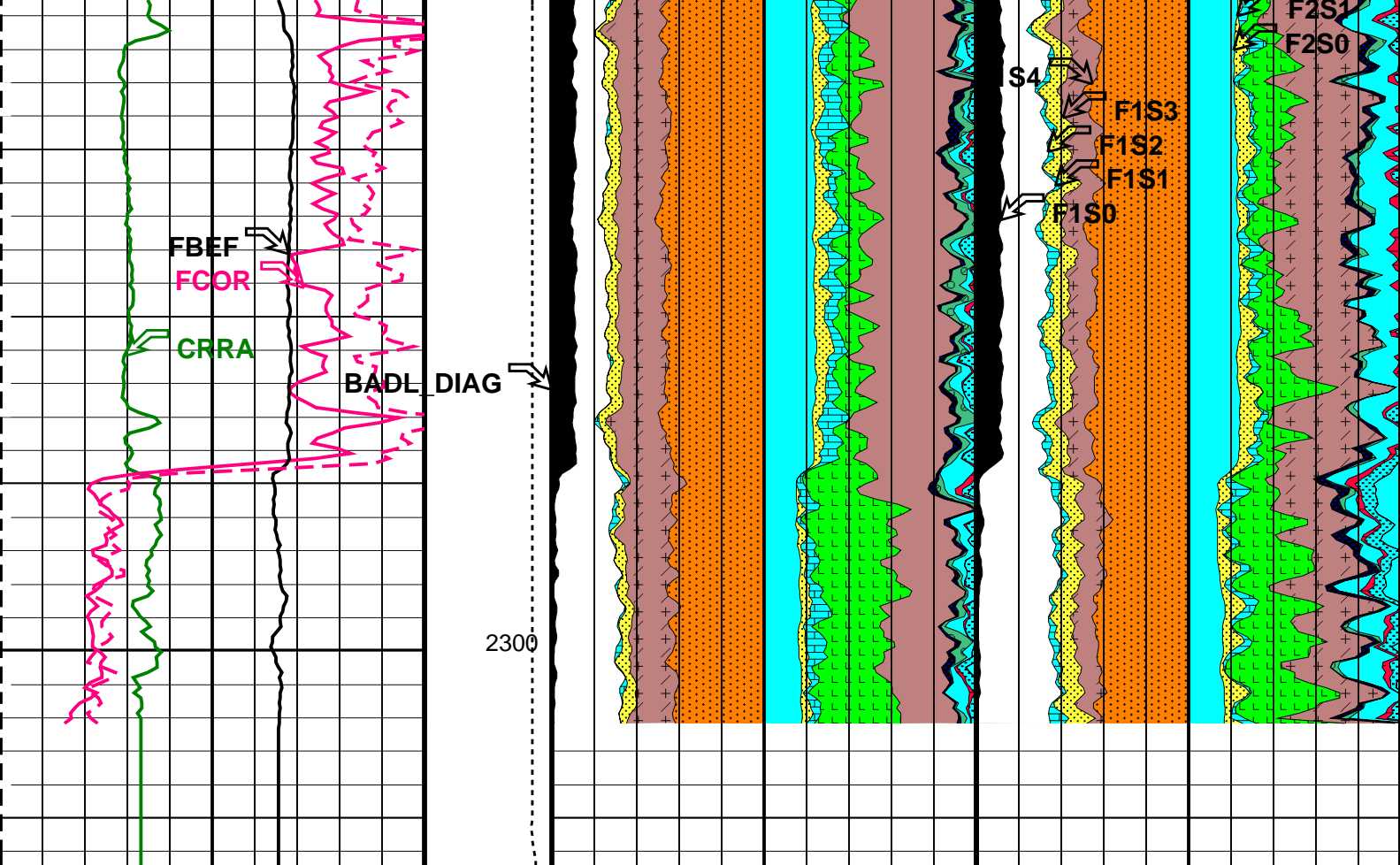
Company: Esso Australia Pty Ltd.	Well: W-12
Input DLIS Files DEFAULT RST_PSP_018LUP FN:17 PRODUCER 13-Nov-2008 16:55 2307.5 M 2250.5 M	
Output DLIS Files DEFAULT RST_PSP_024PUP FN:23 PRODUCER 13-Nov-2008 19:28 2306.4 M 2243.9 M	
OP System Version: 16C0-147 MCM	
RST-C	16C0-147 PSPT-B 16C0-147

Time Mark Every 60 S

PIP SUMMARY

	<div>N2 MAGNESIUM</div> <div>N2 OXYGEN ACT</div> <div>N2 DENSITY</div> <div>N2 TOOL BKG</div> <div>N2 TITANIUM</div> <div>N2 POTASSIUM</div> <div>N2 GADOLINIUM</div> <div>N2 SULFUR</div> <div>N2 IRON</div> <div>N2 CHLORINE</div>	<div>F2 MAGNESIUM</div> <div>F2 OXYGEN ACT</div> <div>F2 DENSITY</div> <div>F2 TOOL BKG</div> <div>F2 TITANIUM</div> <div>F2 POTASSIUM</div> <div>F2 GADOLINIUM</div> <div>F2 SULFUR</div> <div>F2 IRON</div> <div>F2 CHLORINE</div>
--	--	--





<div>Near/Far Count Rate Ratio (CRRA) 1 (----) 3</div>	<div>Tension (TENS) (LBF) 10000 0</div>	N1 CARBON	NC2 OXYGEN ACT	F1 CARBON	FC2 OXYGEN ACT
<div>Far Inel C/O Ratio (FCOR) -0.2 (----) 0.8</div>	<div>Bad Level Diagnostic (BADL_DIAG) 9 (----) 0</div>	N1 OXYGEN	NC2 ALUMINUM ACT	F1 OXYGEN	FC2 ALUMINUM ACT
<div>Far Eff Beam Current (FBEF) 200 (UA) 0</div>	<div>Minitron Arc Detection (MARC) 0 (----) 5</div>	N1 CALCIUM	NC2 SODIUM ACT	F1 CALCIUM	FC2 SODIUM ACT
<div>Near Inel C/O Ratio (NCOR) -0.2 (----) 0.8</div>		N1 SILICON	N2 HYDROGEN	F1 SILICON	F2 HYDROGEN
		N1 IRON	N2 SILICON	F1 IRON	F2 SILICON
		N1 TOOL BKG	N2 CALCIUM	F1 TOOL BKG	F2 CALCIUM
			N2 CHLORINE		F2 CHLORINE
			N2 IRON		F2 IRON
			N2 SULFUR		F2 SULFUR
			N2 GADOLINIUM		F2 GADOLINIUM
			N2 POTASSIUM		F2 POTASSIUM
			N2 TITANIUM		F2 TITANIUM

	N2 TOOL BKG	F2 TOOL BKG
	N2 DENSITY	F2 DENSITY
	N2 OXYGEN ACT	F2 OXYGEN ACT
	N2 MAGNESIUM	F2 MAGNESIUM

PIP SUMMARY

Time Mark Every 60 S

Parameters

DLIS Name	Description	Value
TIER_IC	RST-C: Reservoir Saturation Pro Tool C RST IC Acquisition Mode	0_CO_Yield_and_Spectrolith
DO	System and Miscellaneous	-1.0 M
PP	Depth Offset for Playback Playback Processing	NORMAL

Format: RST_YIELDS Vertical Scale: 1:200 Graphics File Created: 13-Nov-2008 19:28

OP System Version: 16C0-147

MCM

RST-C 16C0-147 PSPT-B 16C0-147

Input DLIS Files

DEFAULT RST_PSP_018LUP FN:17 PRODUCER 13-Nov-2008 16:55 2307.5 M 2250.5 M

Output DLIS Files

DEFAULT RST_PSP_024PUP FN:23 PRODUCER 13-Nov-2008 19:28

Schlumberger

Carbon Oxygen Pass # 3
@ 150 ft/hr

MAXIS Field Log

Company: Esso Australia Pty Ltd.

Well: W-12

Input DLIS Files

DEFAULT RST_PSP_017LUP FN:16 PRODUCER 13-Nov-2008 15:46 2307.8 M 2252.2 M

Output DLIS Files

DEFAULT RST_PSP_023PUP FN:22 PRODUCER 13-Nov-2008 19:27 2306.7 M 2245.6 M

OP System Version: 16C0-147

MCM

RST-C 16C0-147 PSPT-B 16C0-147

PIP SUMMARY

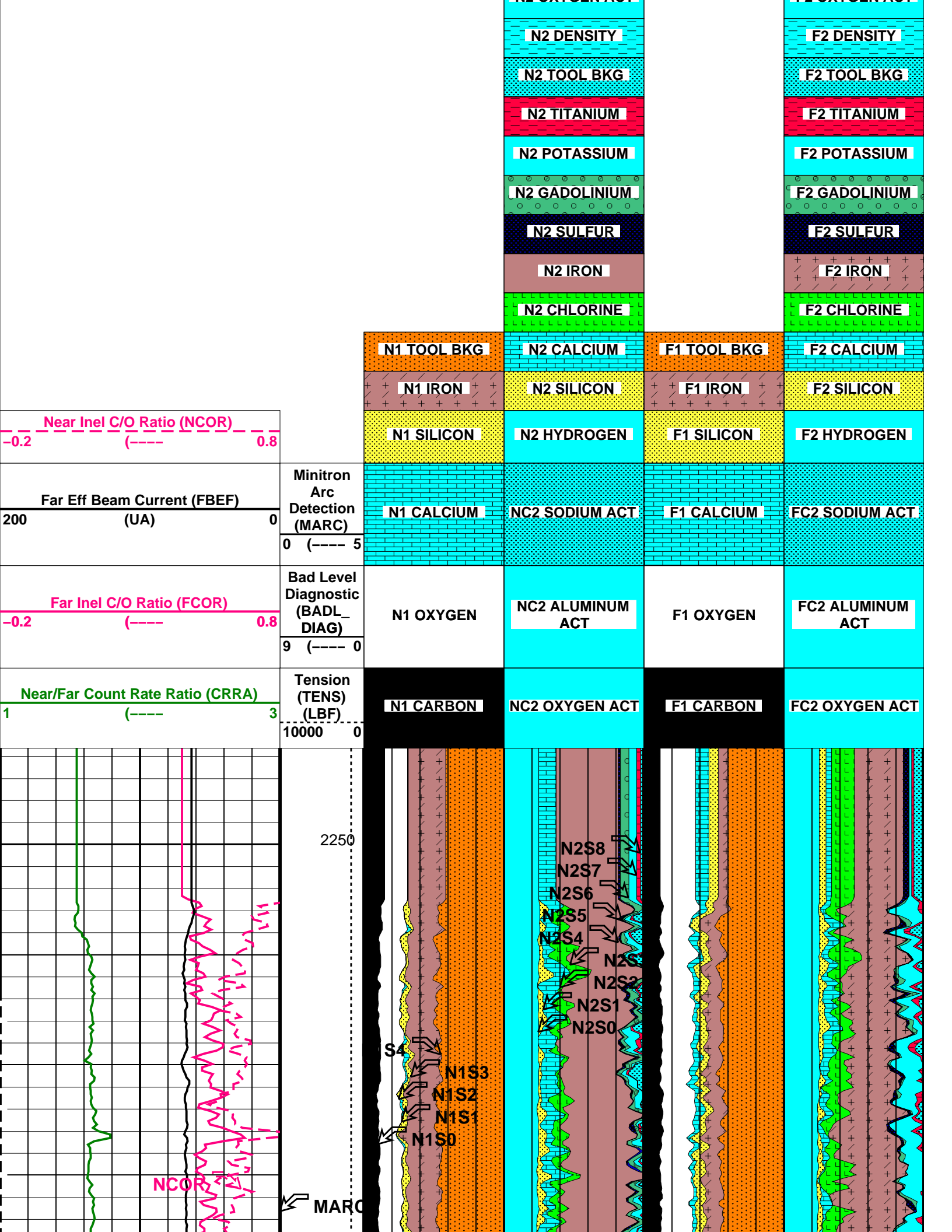
Time Mark Every 60 S

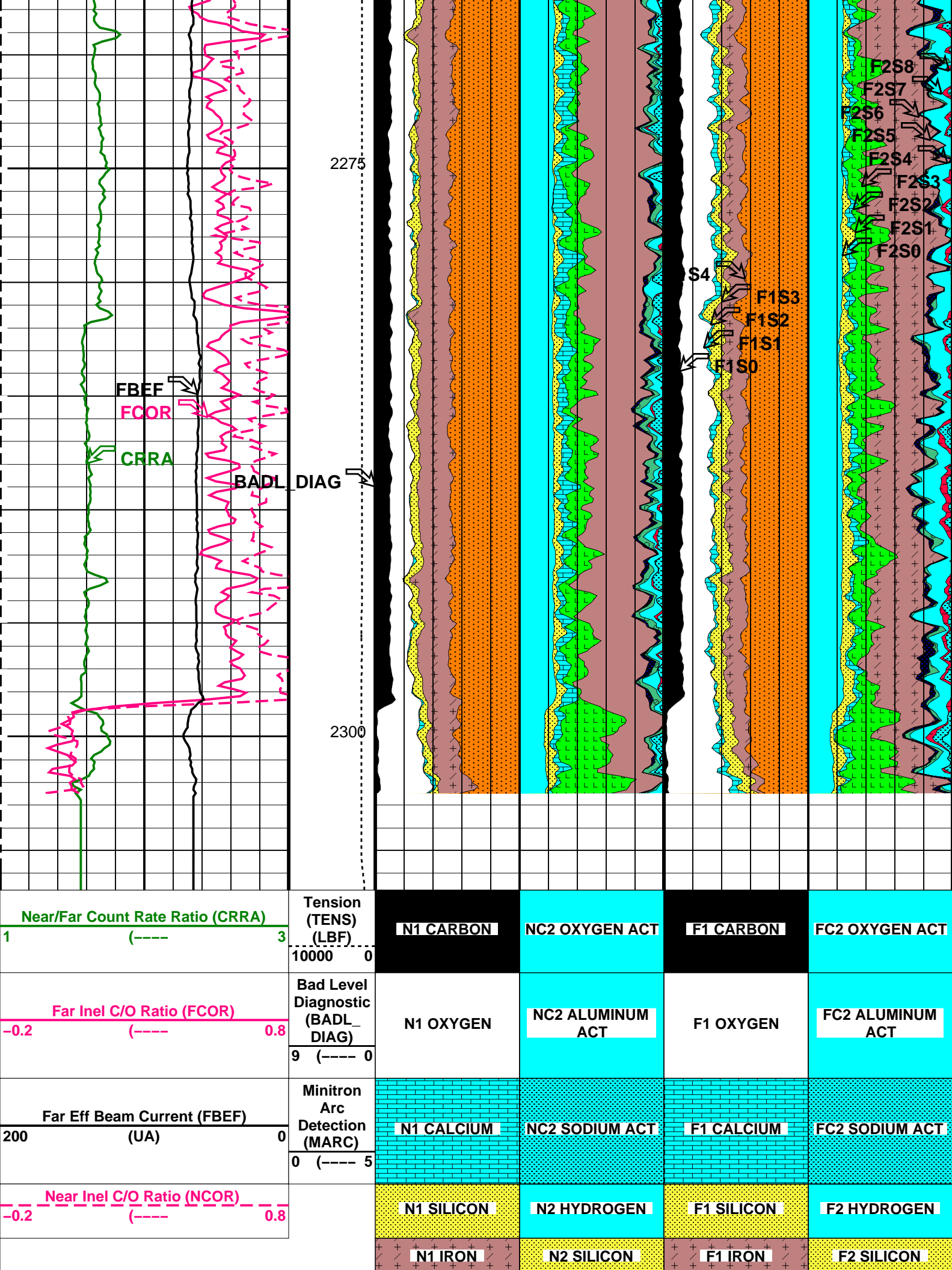
N2 MAGNESIUM

F2 MAGNESIUM

N2 OXYGEN ACT

F2 OXYGEN ACT







PIP SUMMARY


Time Mark Every 60 S

Parameters		
DLIS Name	Description	Value
TIER_IC	RST-C: Reservoir Saturation Pro Tool C RST IC Acquisition Mode	0_CO_Yield_and_Spectrolith
DO	System and Miscellaneous	-1.0 M
PP	Depth Offset for Playback Playback Processing	NORMAL

Format: RST_YIELDS Vertical Scale: 1:200 Graphics File Created: 13-Nov-2008 19:27

OP System Version: 16C0-147			
MCM			
RST-C	16C0-147	PSPT-B	16C0-147

Input DLIS Files					
DEFAULT	RST_PSP_017LUP	FN:16	PRODUCER	13-Nov-2008 15:46	2307.8 M 2252.2 M
Output DLIS Files					
DEFAULT	RST_PSP_023PUP	FN:22	PRODUCER	13-Nov-2008 19:27	



Carbon Oxygen Pass # 2
@ 150 ft/hr

MAXIS Field Log

Input DLIS Files					
DEFAULT	RST_PSP_016LUP	FN:15	PRODUCER	13-Nov-2008 14:50	2307.8 M 2251.9 M

Output DLIS Files

DEFAULT RST_PSP_022PUP FN:21 PRODUCER 13-Nov-2008 19:27 2306.1 M 2244.7 M

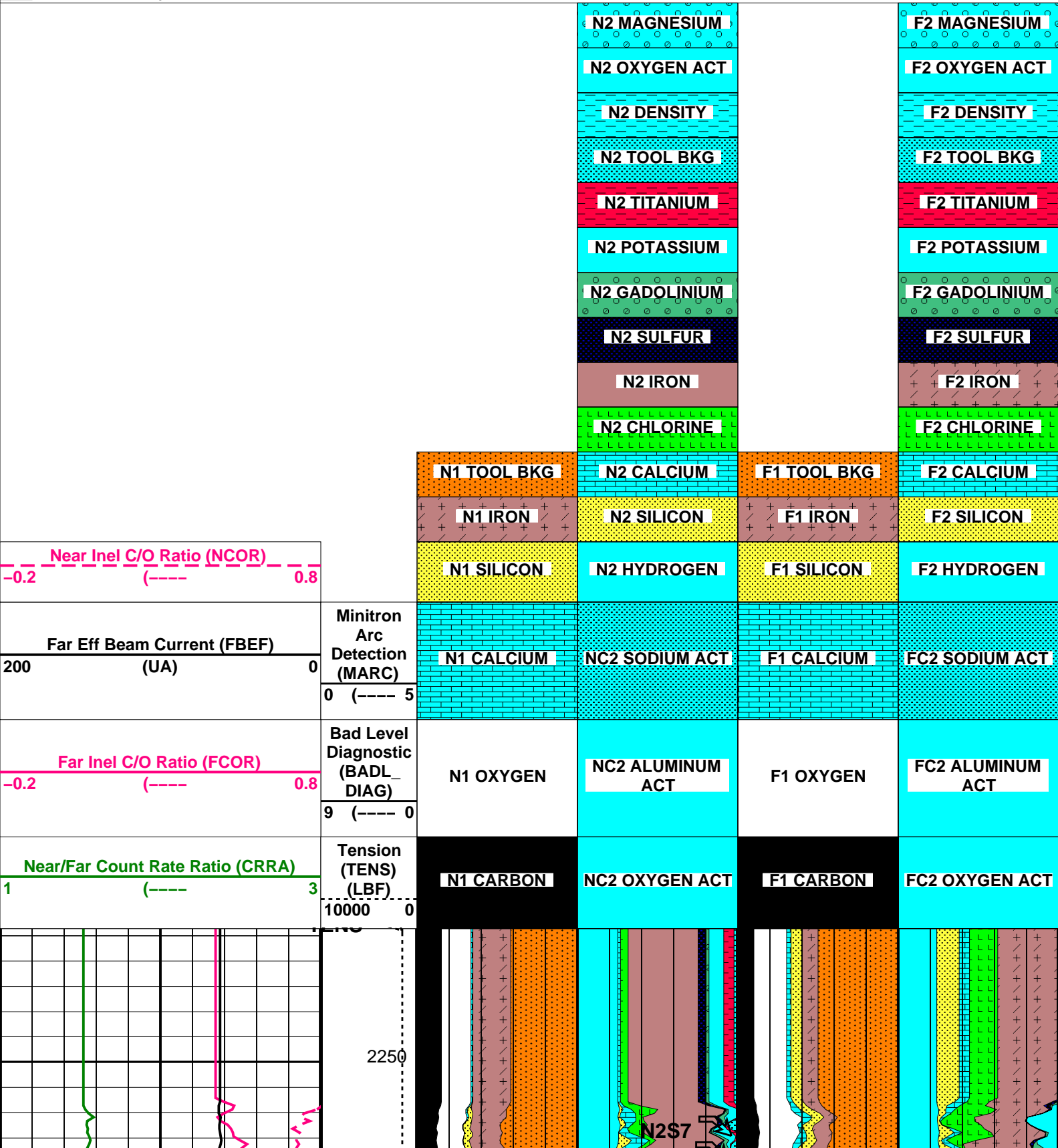
OP System Version: 16C0-147

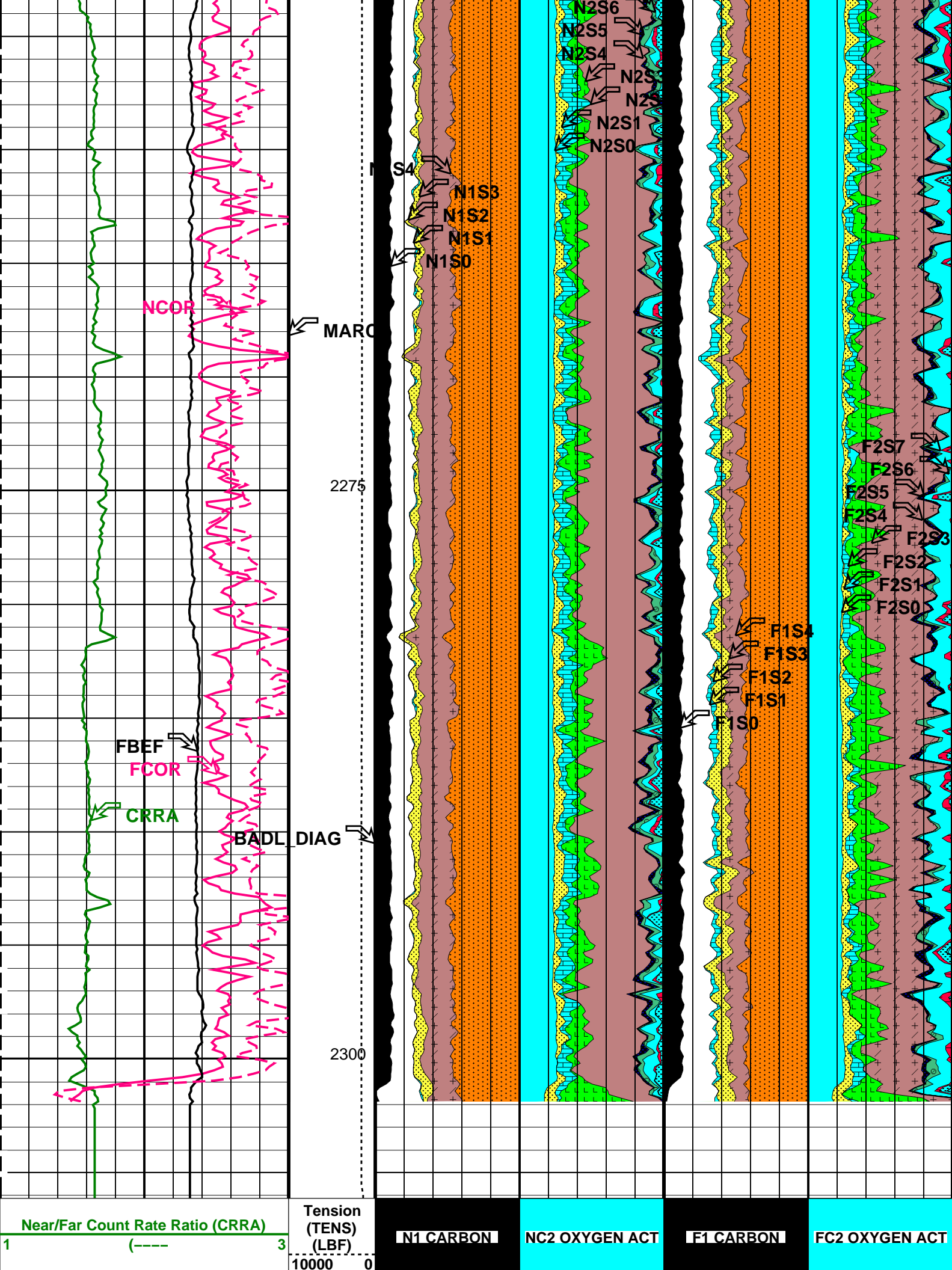
MCM

RST-C 16C0-147 PSPT-B 16C0-147

PIP SUMMARY

Time Mark Every 60 S





<div>Far Inel C/O Ratio (FCOR)</div> <div>-0.2 (-----) 0.8</div>	<div>Bad Level Diagnostic (BADL_DIAG)</div> <div>9 (----- 0</div>	N1 OXYGEN	NC2 ALUMINUM ACT	F1 OXYGEN	FC2 ALUMINUM ACT
<div>Far Eff Beam Current (FBEF)</div> <div>200 (UA) 0</div>	<div>Minitron Arc Detection (MARC)</div> <div>0 (----- 5</div>	N1 CALCIUM	NC2 SODIUM ACT	F1 CALCIUM	FC2 SODIUM ACT
<div>Near Inel C/O Ratio (NCOR)</div> <div>-0.2 (-----) 0.8</div>		N1 SILICON	N2 HYDROGEN	F1 SILICON	F2 HYDROGEN
		N1 IRON	N2 SILICON	F1 IRON	F2 SILICON
		N1 TOOL BKG	N2 CALCIUM	F1 TOOL BKG	F2 CALCIUM
			N2 CHLORINE		F2 CHLORINE
			N2 IRON		F2 IRON
			N2 SULFUR		F2 SULFUR
			N2 GADOLINIUM		F2 GADOLINIUM
			N2 POTASSIUM		F2 POTASSIUM
			N2 TITANIUM		F2 TITANIUM
			N2 TOOL BKG		F2 TOOL BKG
			N2 DENSITY		F2 DENSITY
			N2 OXYGEN ACT		F2 OXYGEN ACT
			N2 MAGNESIUM		F2 MAGNESIUM

PIP SUMMARY					
Time Mark Every 60 S					
Parameters					
DLIS Name		Description		Value	
RST-C: Reservoir Saturation Pro Tool C					
TIER_IC	RST IC Acquisition Mode		0_CO_Yield_and_Spectrolith		
System and Miscellaneous					
DO	Depth Offset for Playback		-1.0 M		
PP	Playback Processing		NORMAL		
Format: RST_YIELDS		Vertical Scale: 1:200		Graphics File Created: 13-Nov-2008 19:27	
OP System Version: 16C0-147					
MCM					
RST-C	16C0-147		PSPT-B	16C0-147	
Input DLIS Files					
DEFAULT	RST_PSP_016LUP	FN:15	PRODUCER	13-Nov-2008 14:50	2307.2 M 2251.3 M
Output DLIS Files					
DEFAULT	RST_PSP_022PUP	FN:21	PRODUCER	13-Nov-2008 19:27	



Carbon Oxygen Pass # 1
@ 150 ft/hr

MAXIS Field Log

Company: Esso Australia Pty Ltd. Well: W-12

Input DLIS Files

DEFAULT RST_PSP_015LUP FN:14 PRODUCER 13-Nov-2008 13:48 2307.3 M 2250.5 M

Output DLIS Files

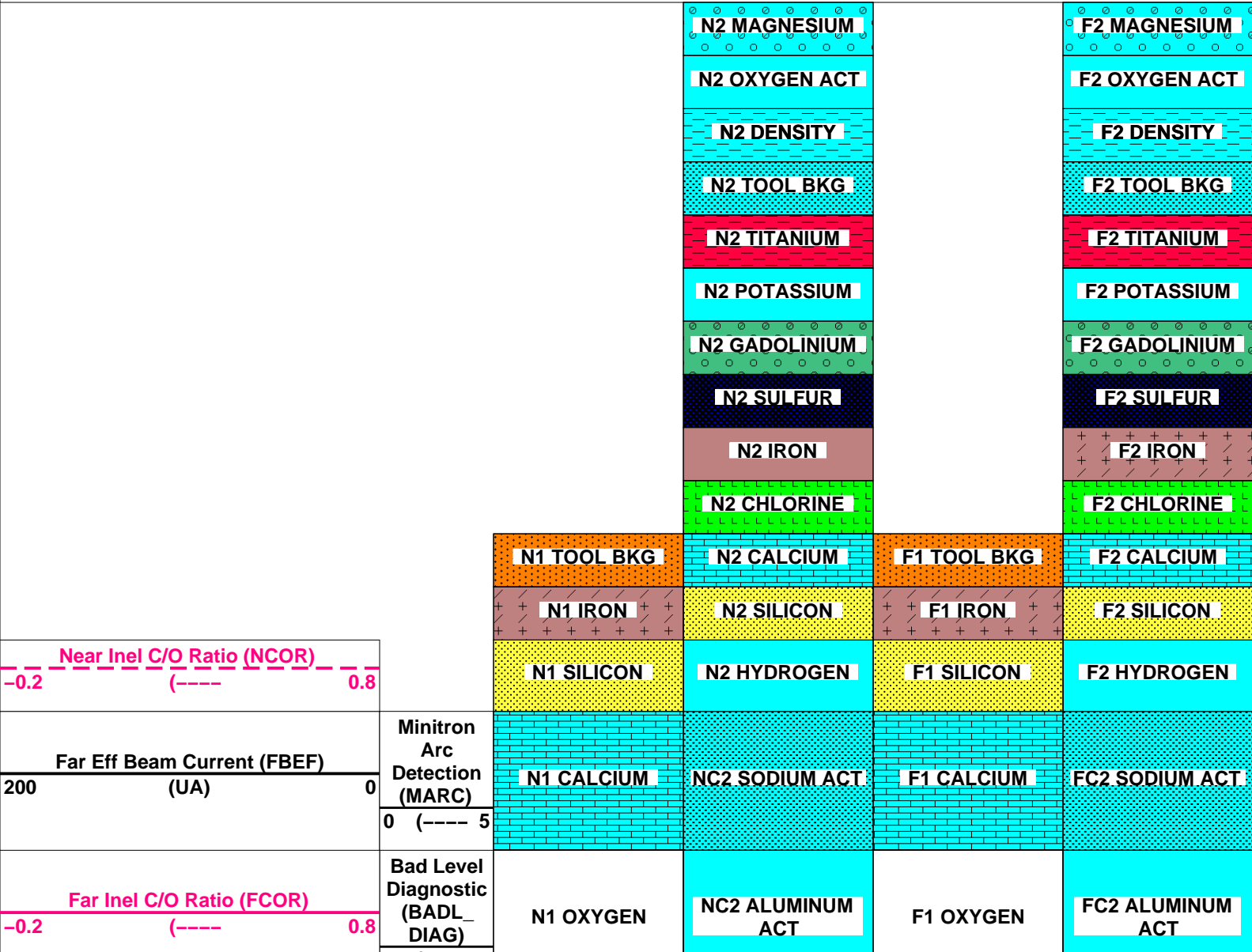
DEFAULT RST_PSP_021PUP FN:20 PRODUCER 13-Nov-2008 19:26 2306.3 M 2243.9 M

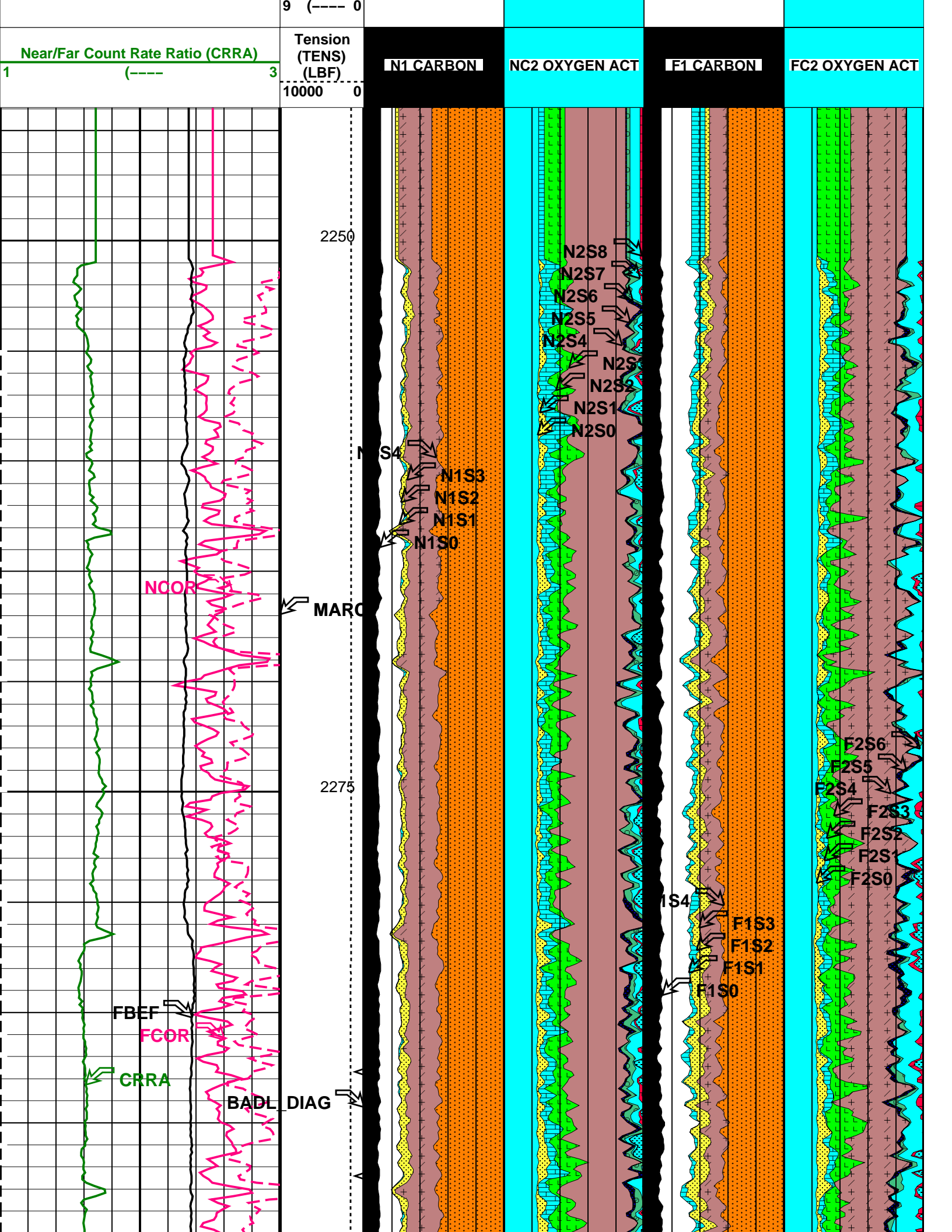
OP System Version: 16C0-147
MCM

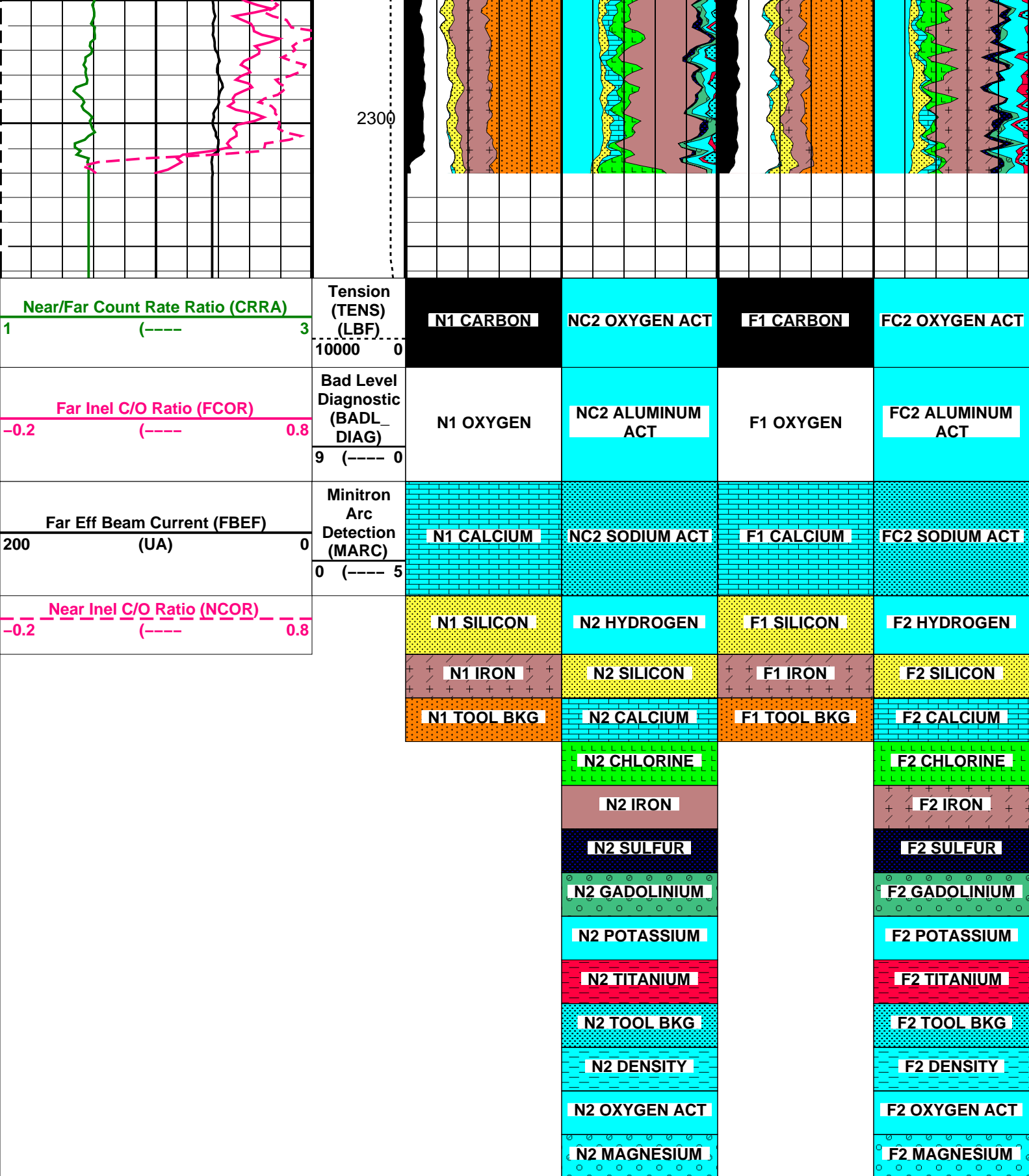
RST-C 16C0-147 PSPT-B 16C0-147

PIP SUMMARY

Time Mark Every 60 S








PIP SUMMARY

Time Mark Every 60 S

Parameters

DLIS Name	Description	Value
RST-C: Reservoir Saturation Pro Tool C		
TIER_IC	RST IC Acquisition Mode	0_CO_Yield_and_Spectrolith
System and Miscellaneous		

OP System Version: 16C0-147							
MCM							
RST-C	16C0-147	PSPT-B		16C0-147			
Input DLIS Files							
DEFAULT	RST_PSP_015LUP	FN:14	PRODUCER	13-Nov-2008 13:48	2307.3 M	2250.5 M	
Output DLIS Files							
DEFAULT	RST_PSP_021PUP	FN:20	PRODUCER	13-Nov-2008 19:26			



RST-C Sigma Pass
@ 900 ft/hr

MAXIS Field Log

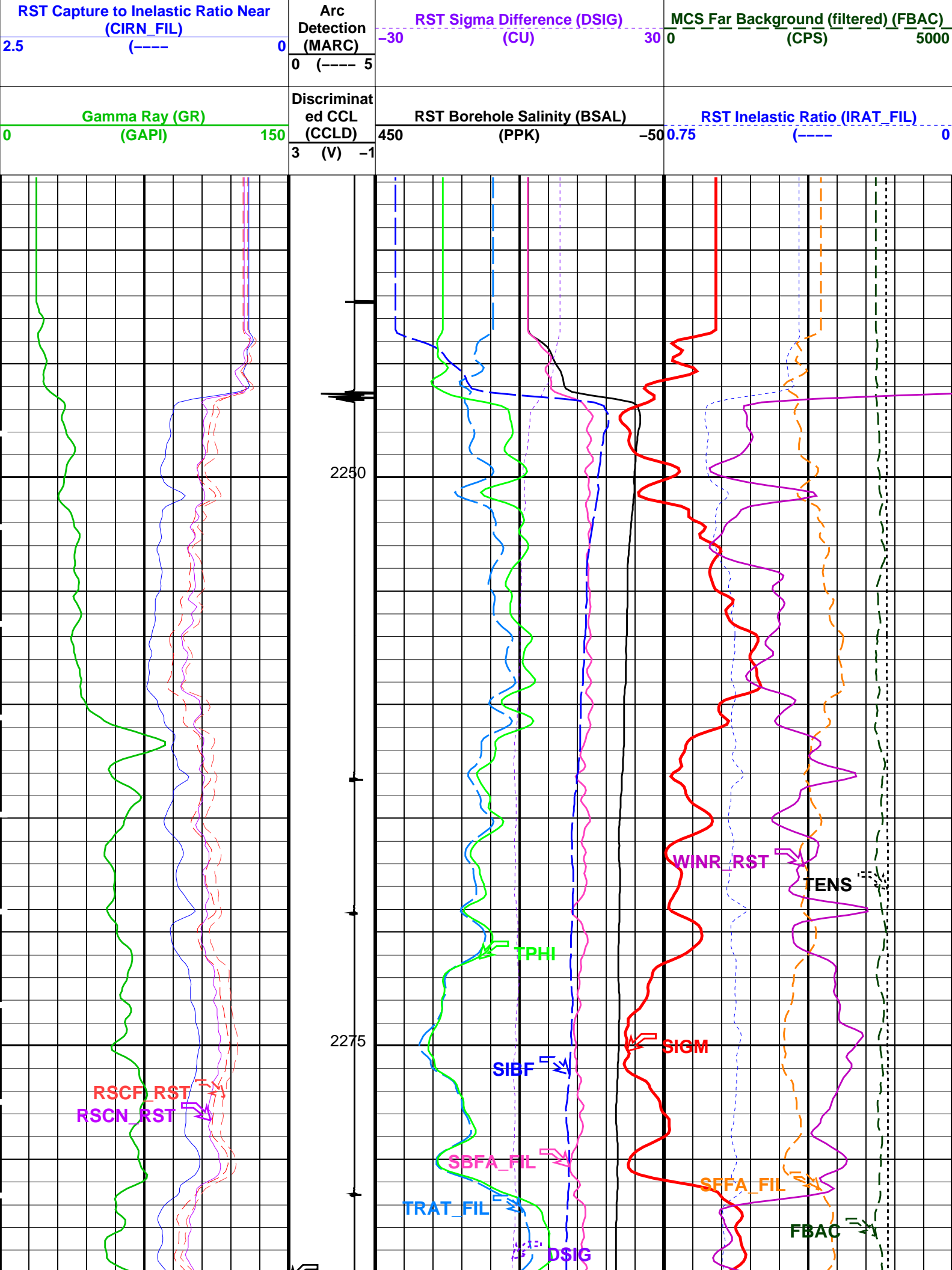
Input DLIS Files					
DEFAULT	RST_PSP_014LUP	FN:13	PRODUCER	13-Nov-2008 13:29	2307.3 M 2243.2 M
Output DLIS Files					
DEFAULT	RST_PSP_026PUP	FN:25	PRODUCER	13-Nov-2008 19:37	2306.3 M 2236.6 M

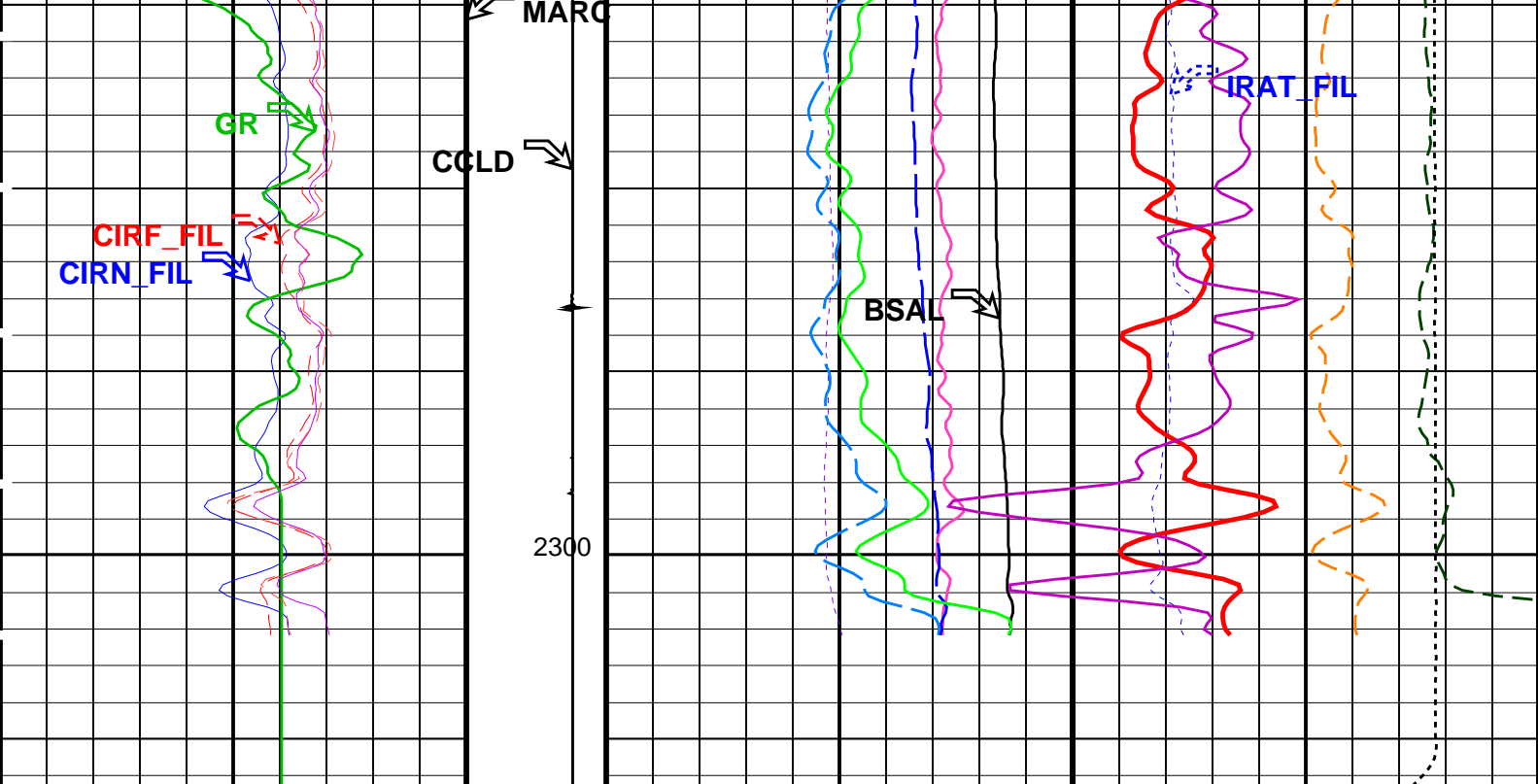
OP System Version: 16C0-147					
MCM					
RST-C	16C0-147	PSPT-B		16C0-147	

PIP SUMMARY

 Time Mark Every 60 S

		RST Sigma (SIGM)			
		60		(CU) 0	
		RST Weighted Inelastic Ratio (WINR_RST)			
		0.4		(---- 0	
		RST Porosity (TPHI)			
RST Far Effective Capture CR (RSCF_RST) ----- 45 (---- 0		0.6 (V/V) 0			
		RST Sigma Borehole Fluid (SIBF)			
		100 (CU) 0			
		Sigma Borehole Far Apparent (SBFA_FIL)		Tension (TENS)	
		150 (CU) 0		0 (LBF) 3000	
RST Near Effective Capture CR (RSCN_RST) ----- 45 (---- 0		RST Capture Ratio (TRAT_FIL)		Sigma Formation Far Apparent (SFFA_FIL)	
RST Capture to Inelastic Ratio Far (CIRF_FIL) ----- 5 (---- 0		1.5 (---- 0.5		60 (CU) 0	
Minitron					





<div>Gamma Ray (GR) (GAPI)</div> <div>0150</div>	<div>Discriminat ed CCL (CCLD)</div> <div>3 (V) -1</div>	<div>RST Borehole Salinity (BSAL) (PPK)</div> <div>450-50</div>	<div>RST Inelastic Ratio (IRAT_FIL) (----)</div> <div>0.750</div>
<div>RST Capture to Inelastic Ratio Near (CIRN_FIL)</div> <div>2.5 (----) 0</div>	<div>Minitron Arc Detection (MARC)</div> <div>0 (---- 5</div>	<div>RST Sigma Difference (DSIG) (CU)</div> <div>-3030</div>	<div>MCS Far Background (filtered) (FBAC) (CPS)</div> <div>05000</div>
<div>RST Capture to Inelastic Ratio Far (CIRF_FIL)</div> <div>5 (----) 0</div>		<div>RST Capture Ratio (TRAT_FIL) (----)</div> <div>1.50.5</div>	<div>Sigma Formation Far Apparent (SFFA_ FIL) (CU)</div> <div>60 (----) 0</div>
<div>RST Near Effective Capture CR (RSCN_ RST)</div> <div>45 (----) 0</div>		<div>Sigma Borehole Far Apparent (SBFA_ FIL) (CU)</div> <div>1500</div>	<div>Tension (TENS) (LBF)</div> <div>03000</div>
<div>RST Far Effective Capture CR (RSCF_ RST)</div> <div>45 (----) 0</div>		<div>RST Sigma Borehole Fluid (SIBF) (CU)</div> <div>1000</div>	
		<div>RST Porosity (TPHI) (V/V)</div> <div>0.60</div>	
		<div>RST Weighted Inelastic Ratio (WINR_RST) (----)</div> <div>0.40</div>	
		<div>RST Sigma (SIGM) (CU)</div> <div>600</div>	

PIP SUMMARY

Time Mark Every 60 S


Parameters		
DLIS Name	Description	Value
RST-C: Reservoir Saturation Pro Tool C		
AIRB	RST Air Borehole	No
BHS	Borehole Status	CASED
BSALOPT	RST Borehole Salinity Option	Unknown
BSFL	RST Borehole Salinity Filter Length	51
DEPC	RST Depth Filter Processing Constant	One

DTFC	RST Depth Filter Processing Constant	One	
DFPC_TDTL	RST Depth Filter Processing Constant (TDT-like)	Two	
MATR	Rock Matrix for Neutron Porosity Corrections	SANDSTONE	
NORM_IRAT_RST	RST Normalized Inelastic Ratio	0.48	
NORM_SIGM_RST	RST Normalized Sigma	30	CU
RGAI	Near/Far Gain Calibration Ratio	1	
TIER_SIGM	RST Sigma Acquisition Mode	0_RST_Sigma	
PSPT-B: Production Services Logging Platform			
BHS	Borehole Status	CASED	
MATR	Rock Matrix for Neutron Porosity Corrections	SANDSTONE	
System and Miscellaneous			
BS	Bit Size	9.875	IN
BSAL	Borehole Salinity	-50000.00	PPM
CSIZ	Current Casing Size	7.625	IN
CWEI	Casing Weight	29.70	LB/F
DO	Depth Offset for Playback	-1.0	M
PP	Playback Processing	NORMAL	

Format: RST_SIG_ANSW
Vertical Scale: 1:200
Graphics File Created: 13-Nov-2008 19:37

OP System Version: 16C0-147			
MCM			
RST-C	16C0-147	PSPT-B	16C0-147

Input DLIS Files					
DEFAULT	RST_PSP_014LUP	FN:13	PRODUCER	13-Nov-2008 13:29	2307.3 M 2243.2 M
Output DLIS Files					
DEFAULT	RST_PSP_026PUP	FN:25	PRODUCER	13-Nov-2008 19:37	



Gamma Ray Pass

MAXIS Field Log

Company: Esso Australia Pty Ltd.
Well: W-12

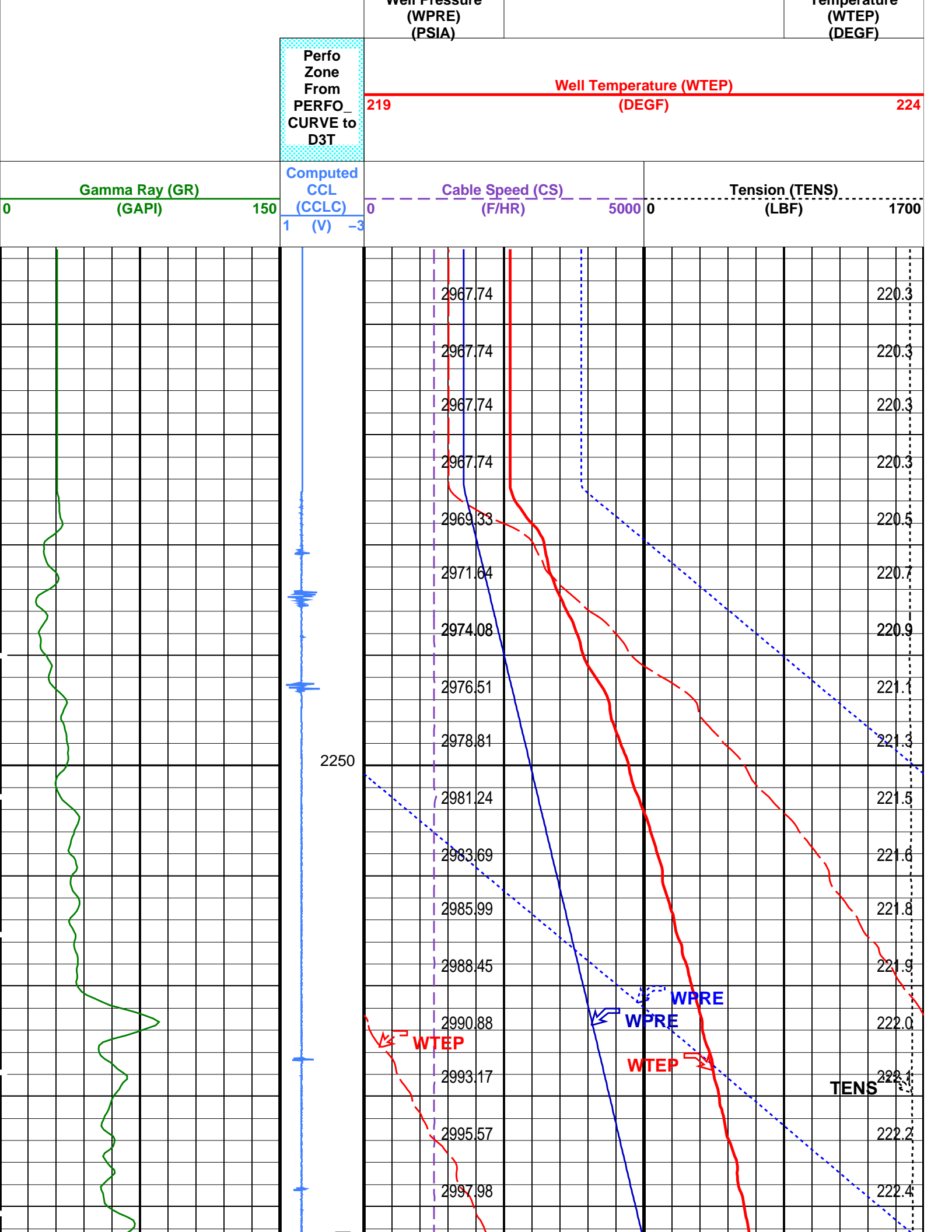
Input DLIS Files					
DEFAULT	RST_PSP_012PUP	FN:11	PRODUCER	13-Nov-2008 13:18	2308.7 M 2233.0 M
Output DLIS Files					
DEFAULT	RST_PSP_027PUP	FN:26	PRODUCER	13-Nov-2008 19:40	

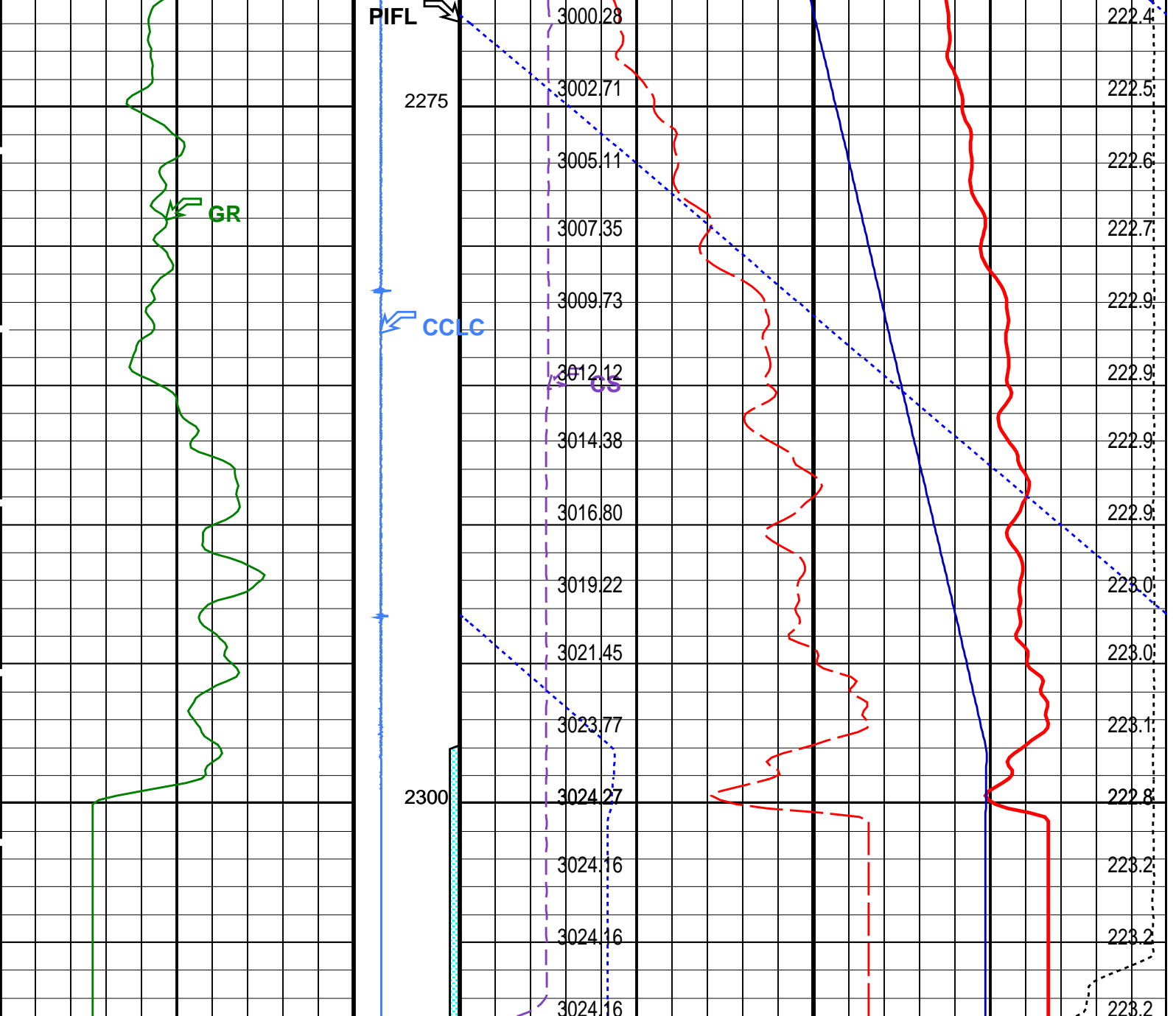
OP System Version: 16C0-147			
MCM			
RST-C	16C0-147	PSPT-B	16C0-147

Time Mark Every 60 S

PIP SUMMARY

	Amplified Well Pressure (WPRE)		
	0 (PSIA) 20		
	Well Pressure (WPRE)		
	2950 (PSIA) 3050		
	Well Temperature (WTEP)		
	0 (DEGF) 2		
	Well Pressure		Temperature





Gamma Ray (GR) (GAPI)		Computed CCLC (CCLC) (V)		Cable Speed (CS) (F/HR)		Tension (TENS) (LBF)	
0	150	1	-3	0	5000	0	1700

Perfo Zone From PERFO_CURVE to D3T	Well Temperature (WTEP) (DEGF)		219	224
	Well Pressure (WPRE) (PSIA)	Temperature (WTEP) (DEGF)		
	Well Temperature (WTEP) (DEGF)		0	2
	Well Pressure (WPRE) (PSIA)		2950	3050
	Amplified Well Pressure (WPRE) (PSIA)		0	20
	PIP SUMMARY			

Time Mark Every 60 S

Format: PSP_1_1 Vertical Scale: 1:200 Graphics File Created: 13-Nov-2008 19:40

OP System Version: 16C0-147
MCM

RST-C 16C0-147 PSPT-B 16C0-147

Parameters

DLIS Name

Description

Value

DO

PP

System and Miscellaneous
Depth Offset for Playback
Playback Processing

-1.0 M
NORMAL

Input DLIS Files

DEFAULT

RST_PSP_012PUP

FN:11 PRODUCER 13-Nov-2008 13:18 2308.7 M 2233.0 M

Output DLIS Files

DEFAULT

RST_PSP_027PUP

FN:26 PRODUCER 13-Nov-2008 19:40

Schlumberger

Calibration Listing

MAXIS Field Log

Calibration and Check Summary							
Measurement	Nominal	Master	Before	After	Change	Limit	Units
Production Services Logging Platform Wellsite Calibration – Detector Calibration							
Before: 13-Nov-2008 10:50							
Gamma-Ray Jig-Bkg	125.0	N/A	128.1	N/A	N/A	N/A	GAPI

Production Services Logging Platform / Equipment Identification			
Primary Equipment:			
Production Logging Platform (CQG-F)	PSPT – B	3918	3918
PSP Basic Measurement Sonde (CQG_F)	PBMS – B	3918	3918
PSP Basic measurement module	PBMS –	3918	3918
PSP CCL	CCL –	3918	3918
PSP GR	GR –	3918	3918
PSP RTD Well Temperature	RTD_ –	3918	3918
PSP Crystal Quartz Gauge Type F	CQG_ –	3918	3918
PSP Telemetry and bus master cartridge	PSTC –	3764	3764
Auxiliary Equipment:			

Production Services Logging Platform Wellsite Calibration							
Detector Calibration							
Phase	Gamma-Ray Background	GAPI	Value	Phase	Gamma-Ray Jig-Bkg	GAPI	Value
Before			5.606	Before			128.1

0 (Minimum)	30.00 (Nominal)	120.0 (Maximum)	110.0 (Minimum)	125.0 (Nominal)	140.0 (Maximum)
Before: 13–Nov–2008 10:50					

Company: **Esso Australia Pty Ltd.**

Schlumberger

Well: **W-12**
Field: **West Kingfish**
Rig: **Prod4 / Crane**
Country: **Australia**

RST–C Sigma
Carbon Oxygen
Survey