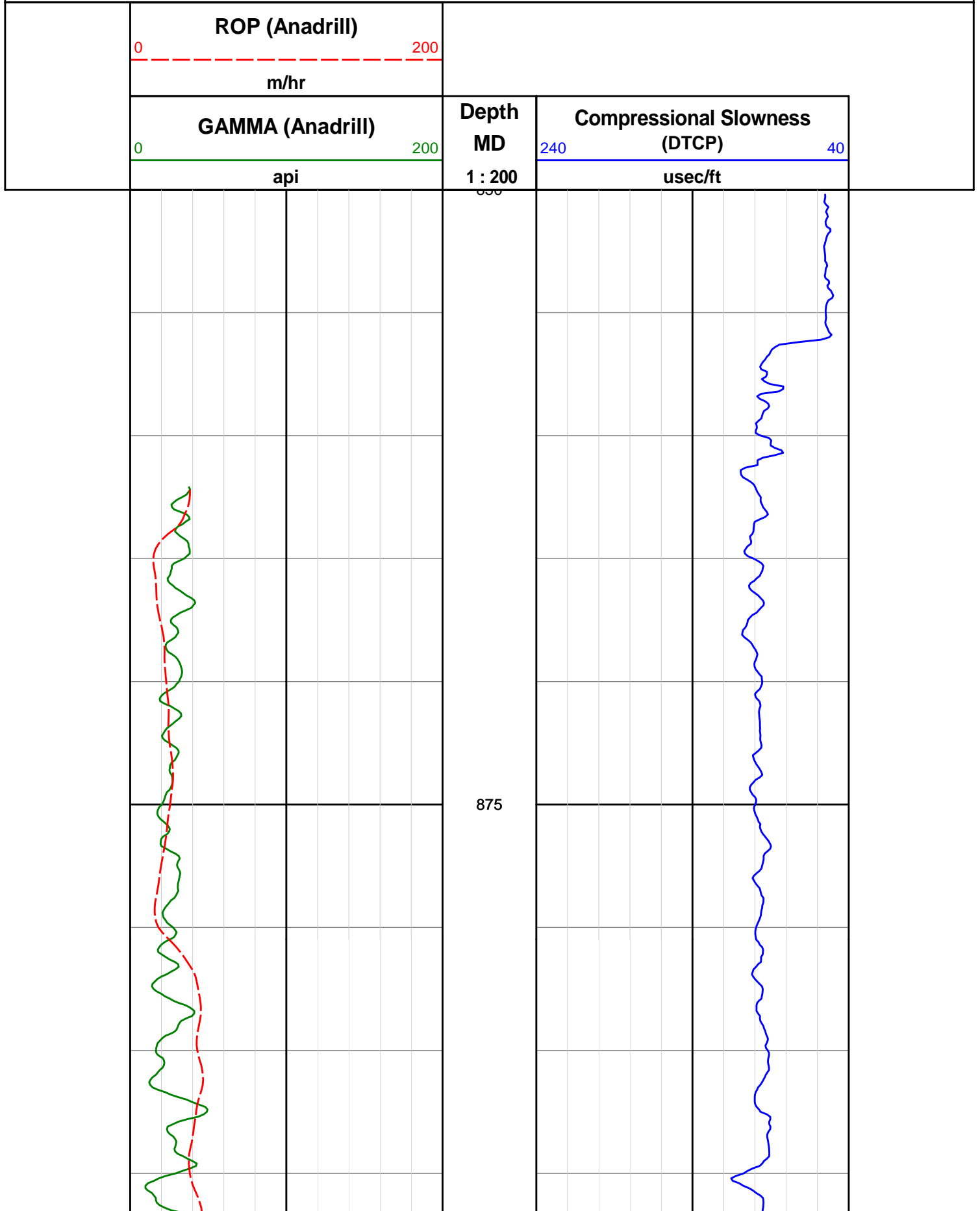


Well: Wasabi-1 Field: Exploration

Apache Northwest Pty Ltd

Recorded LWD Data - Field Copy

311mm Hole Section

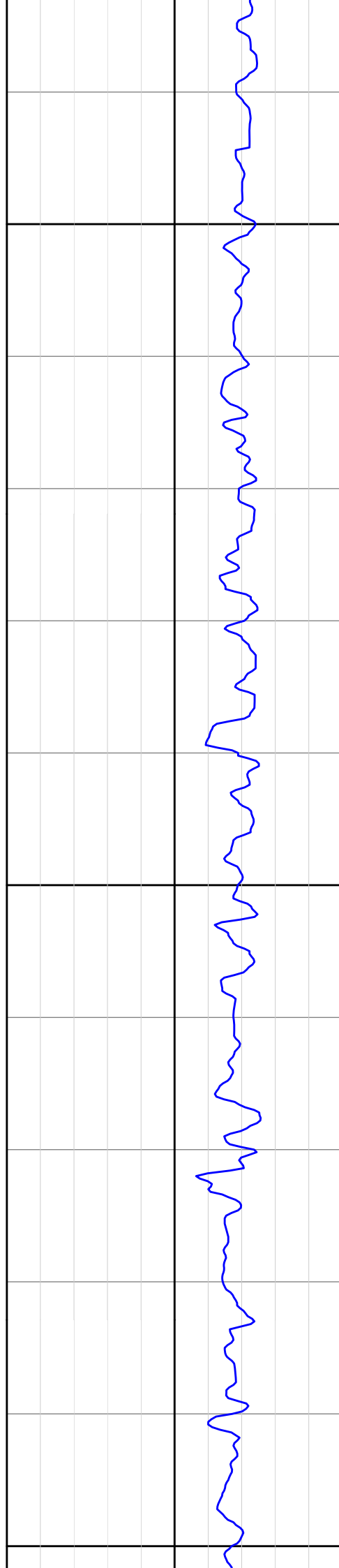


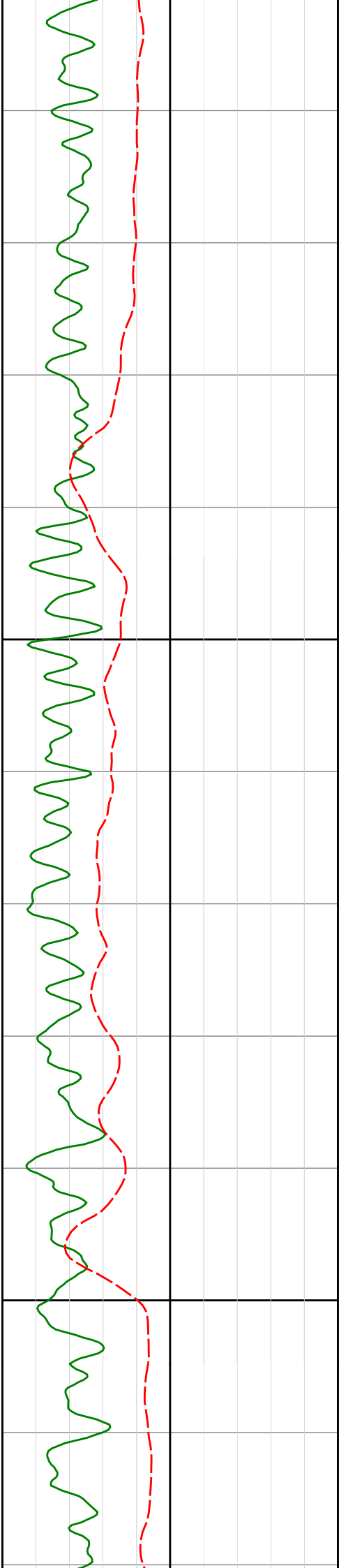


900

925

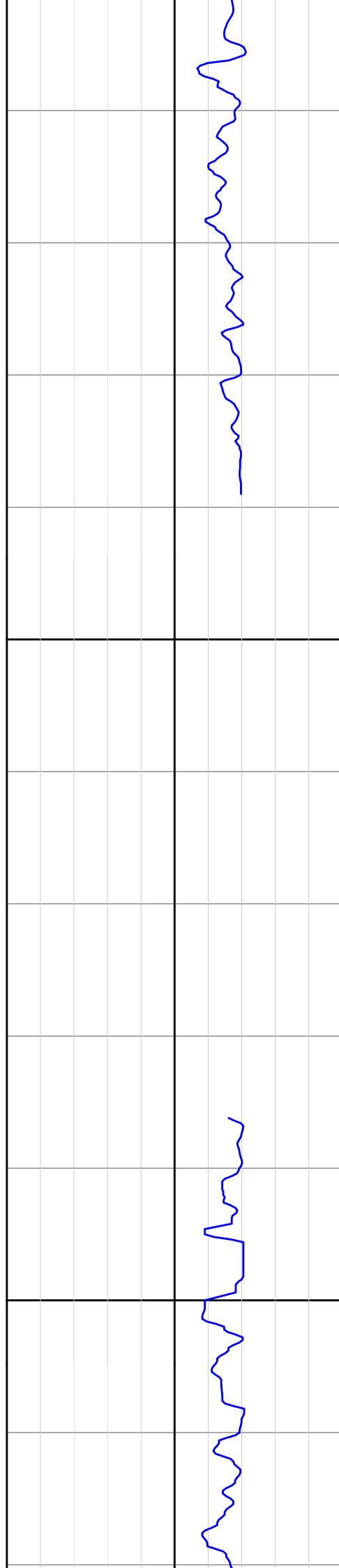
950

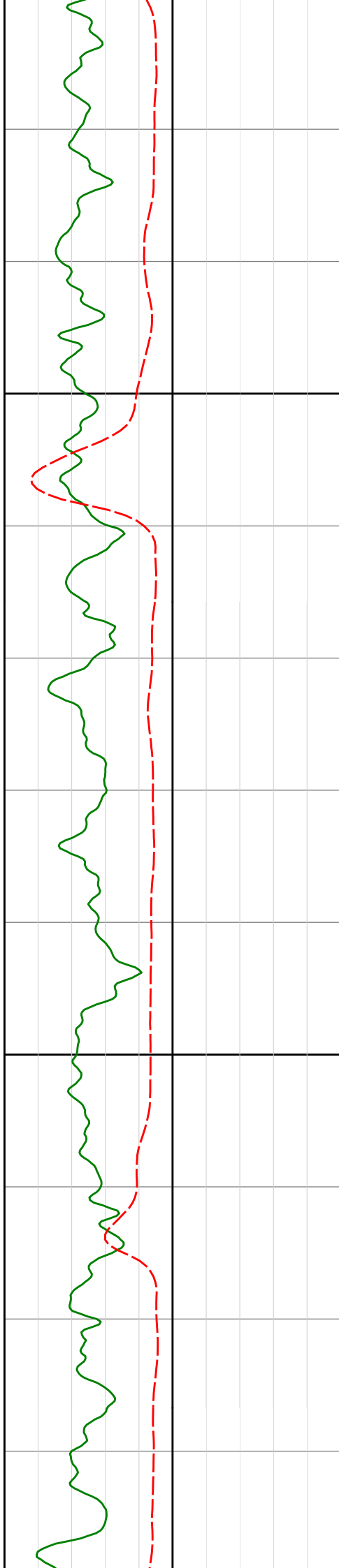




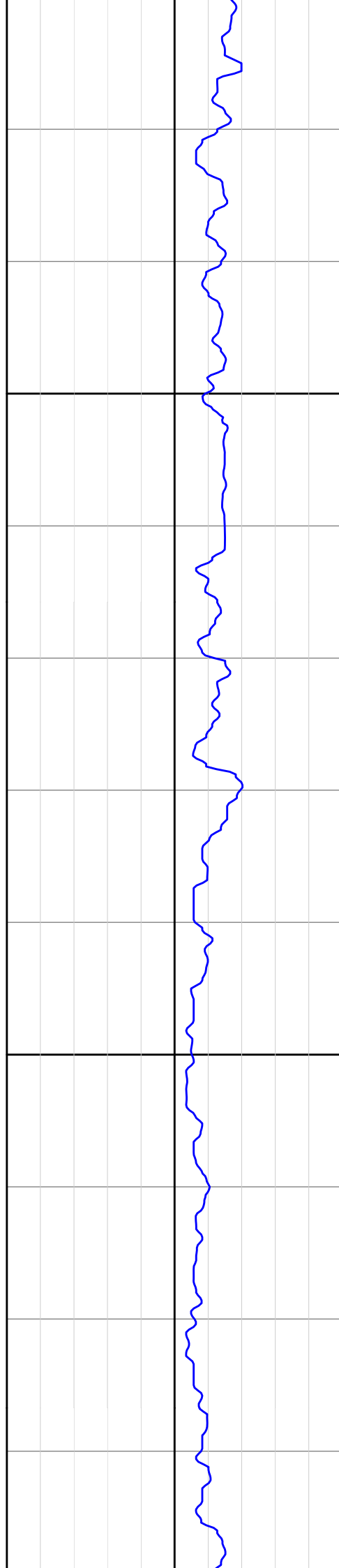
975

1000

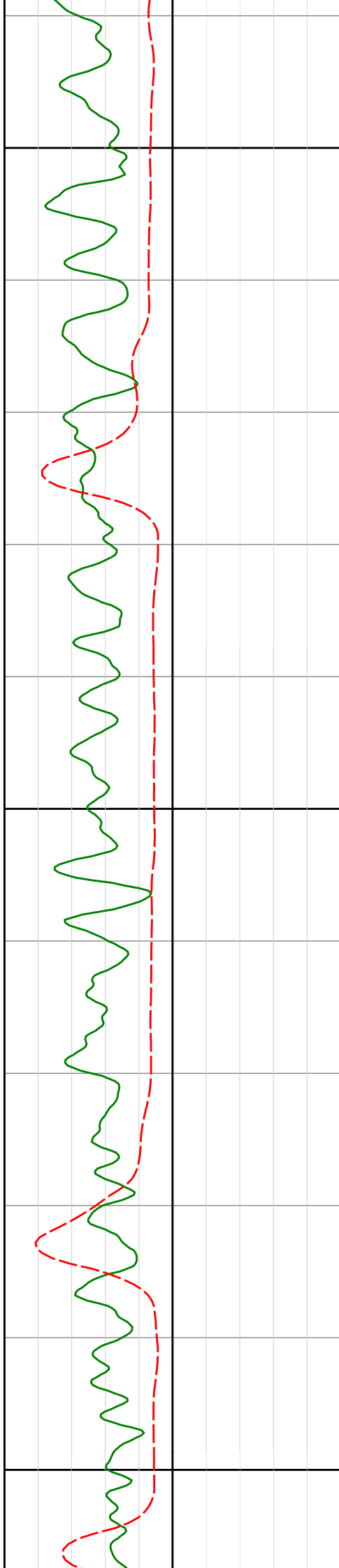




1025



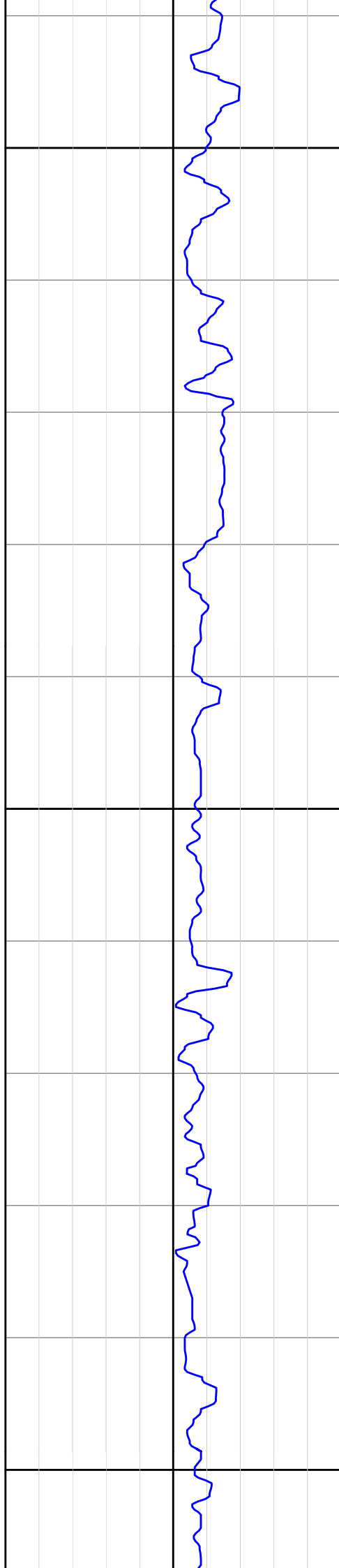
1050

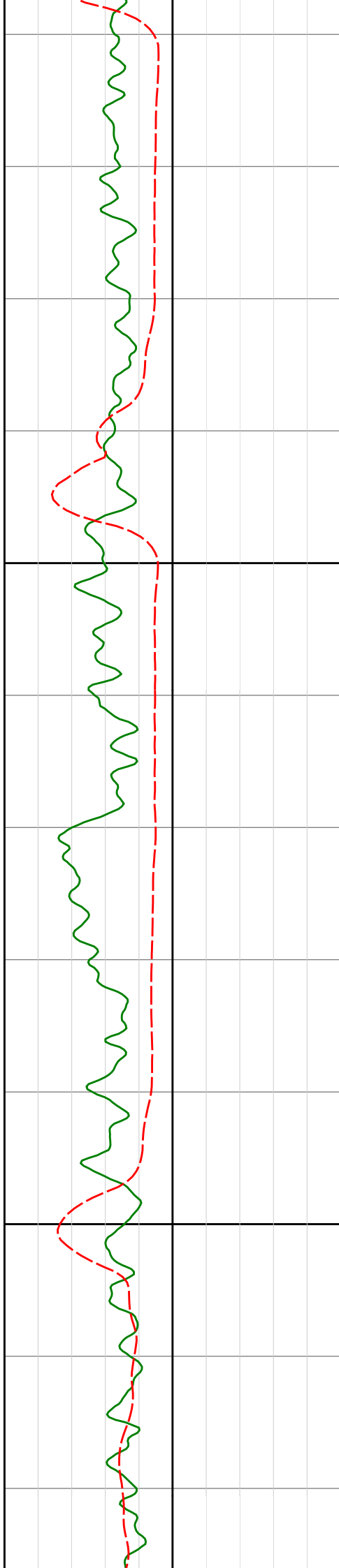


1075

1100

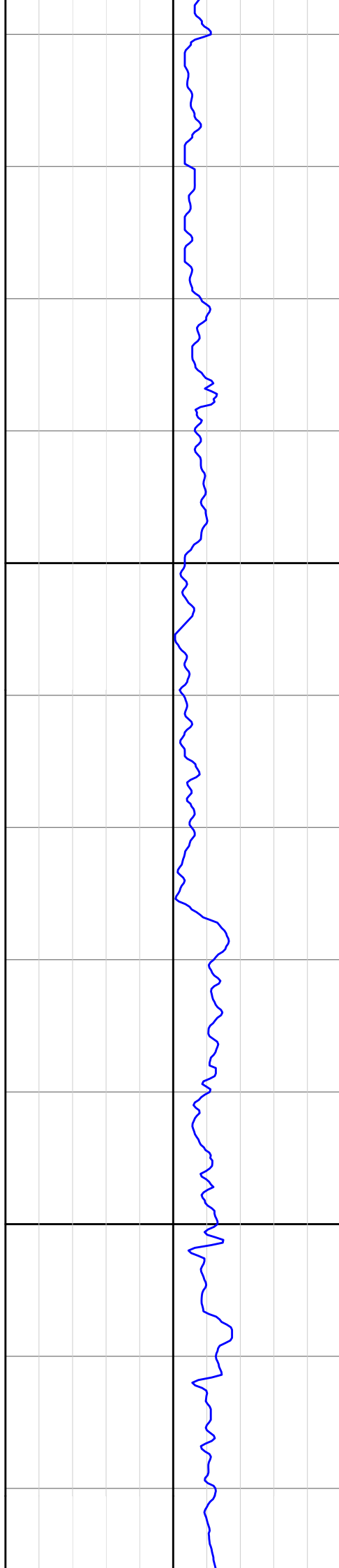
1125

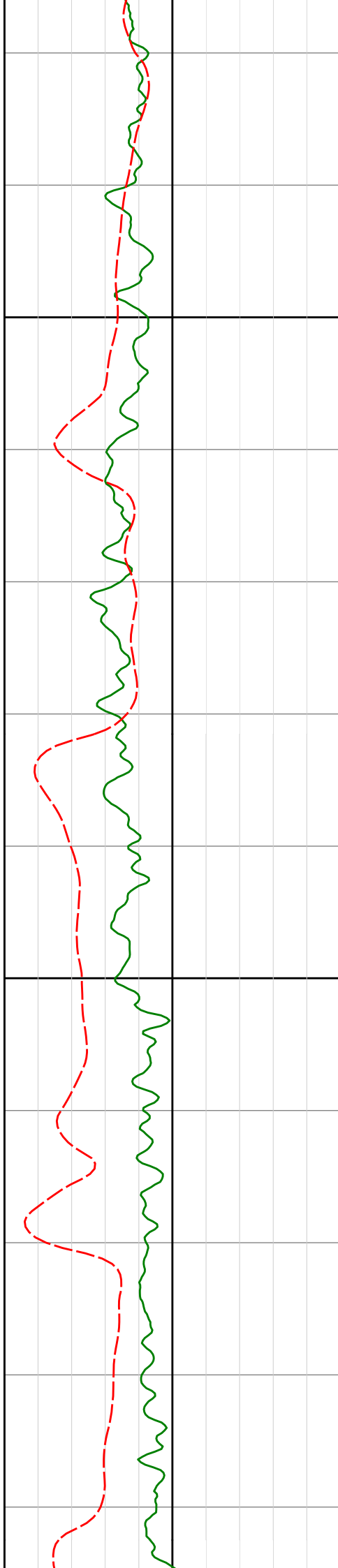




1150

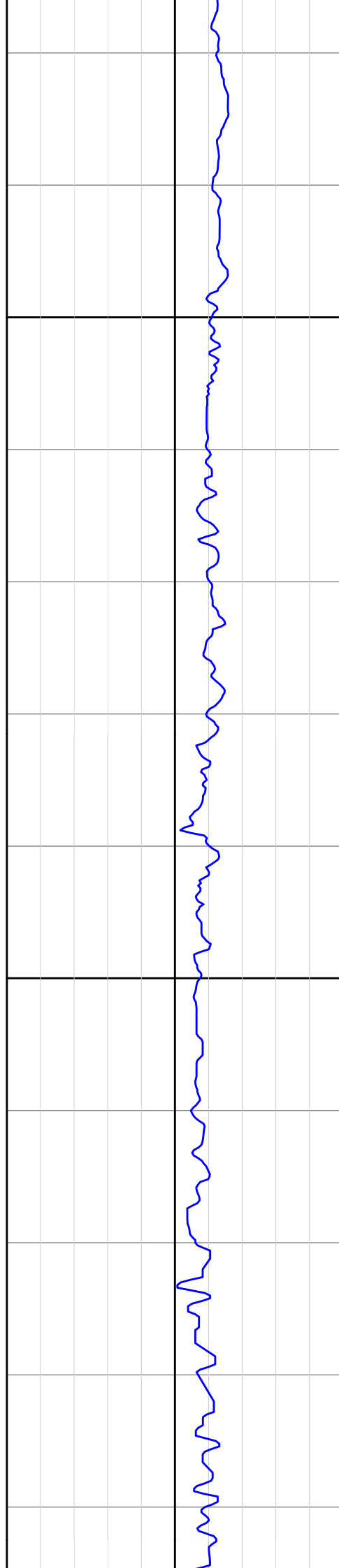
1175

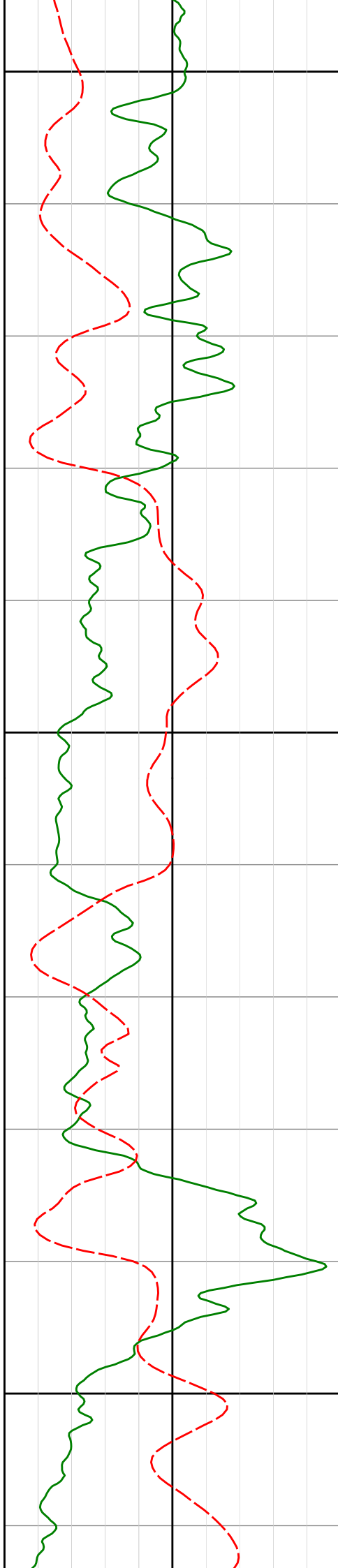




1200

1225

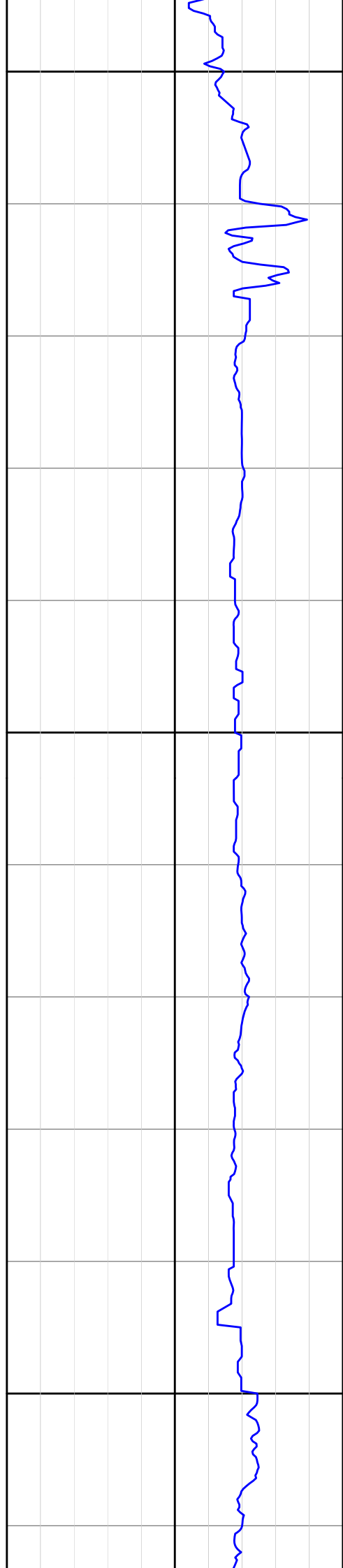


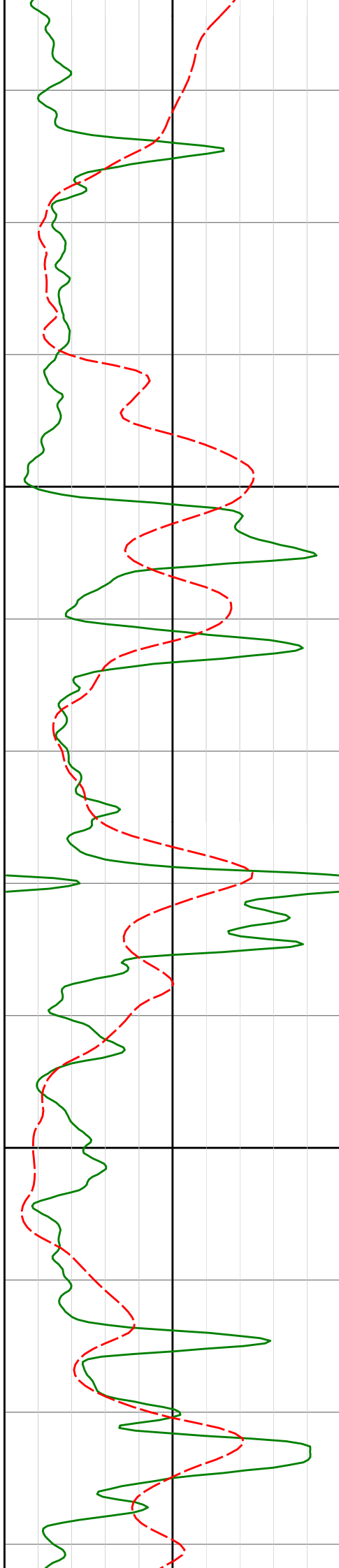


1250

1275

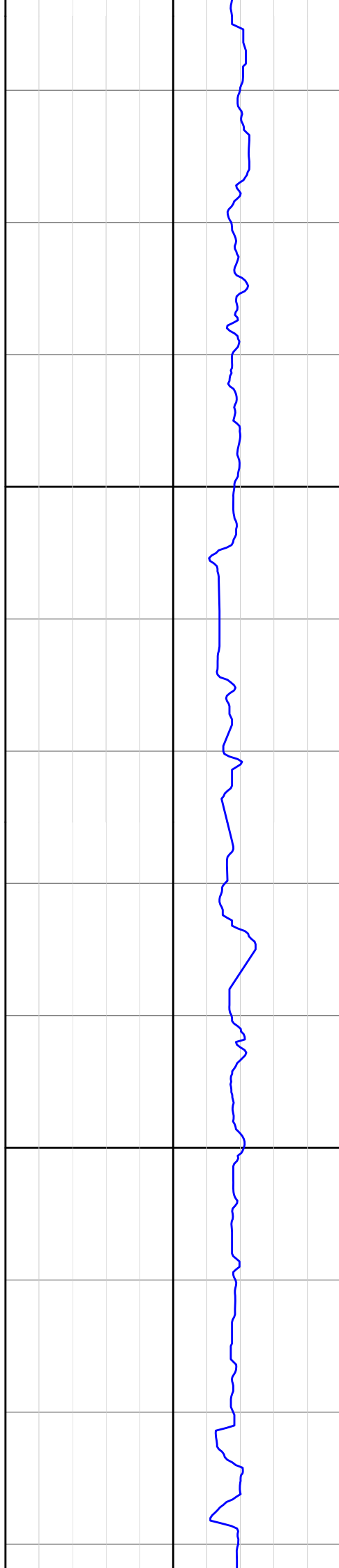
1300

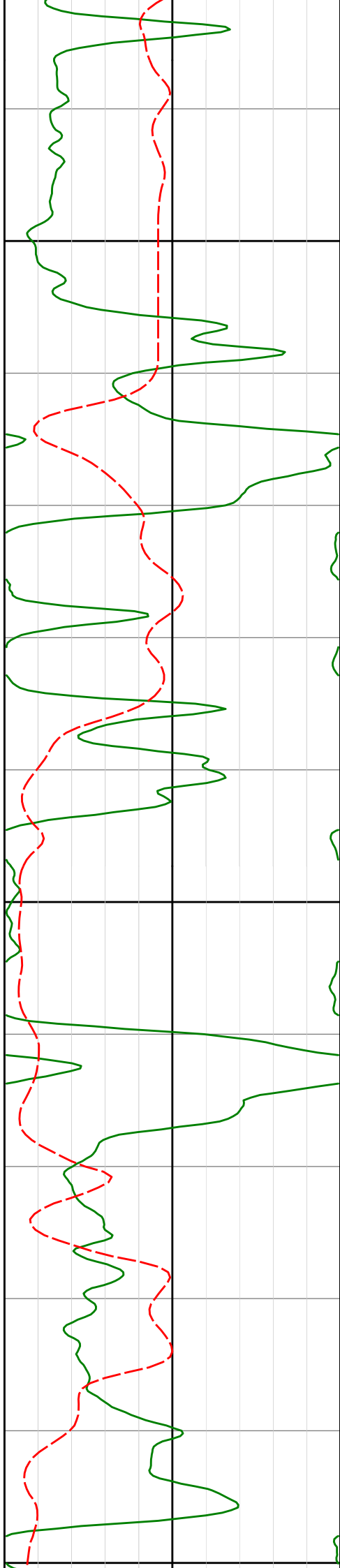




1325

1350

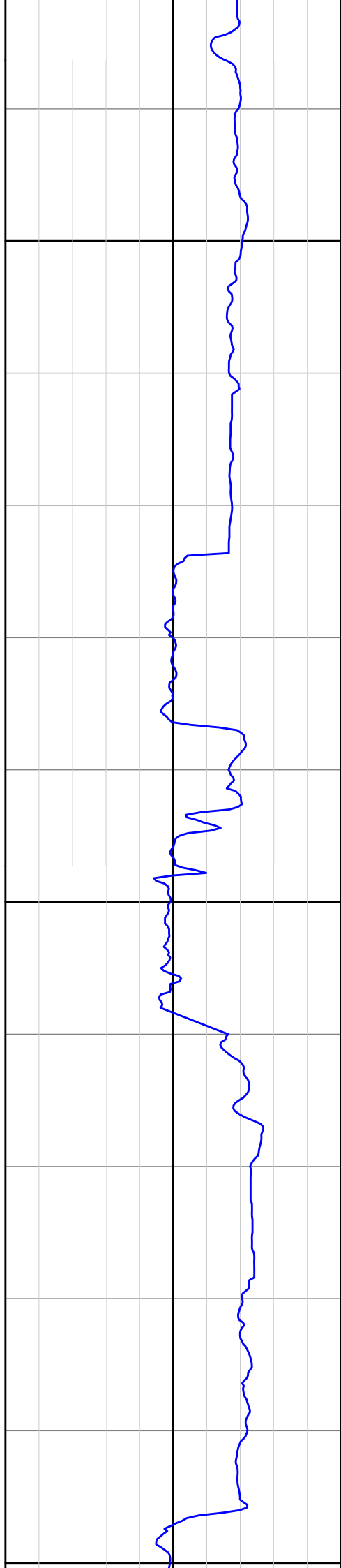


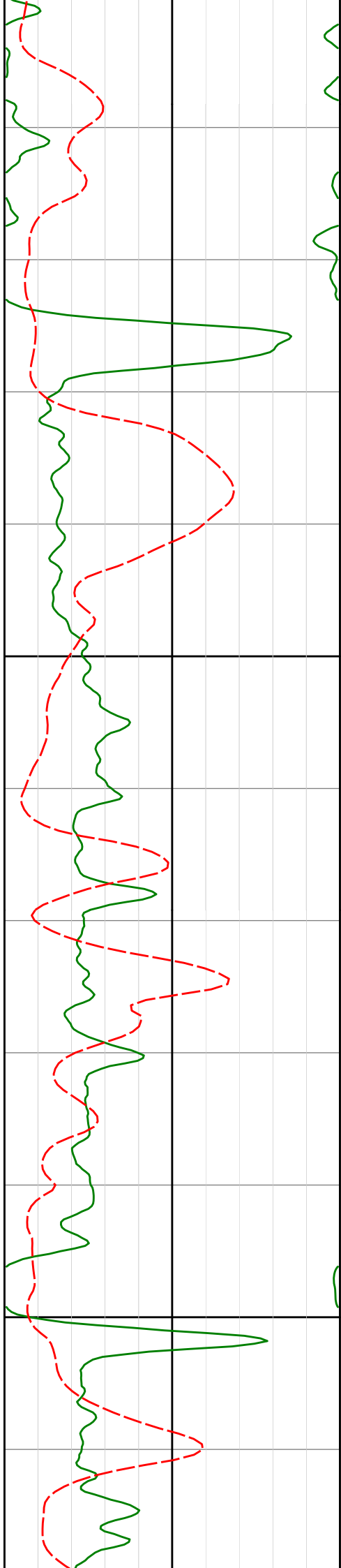


1375

1400

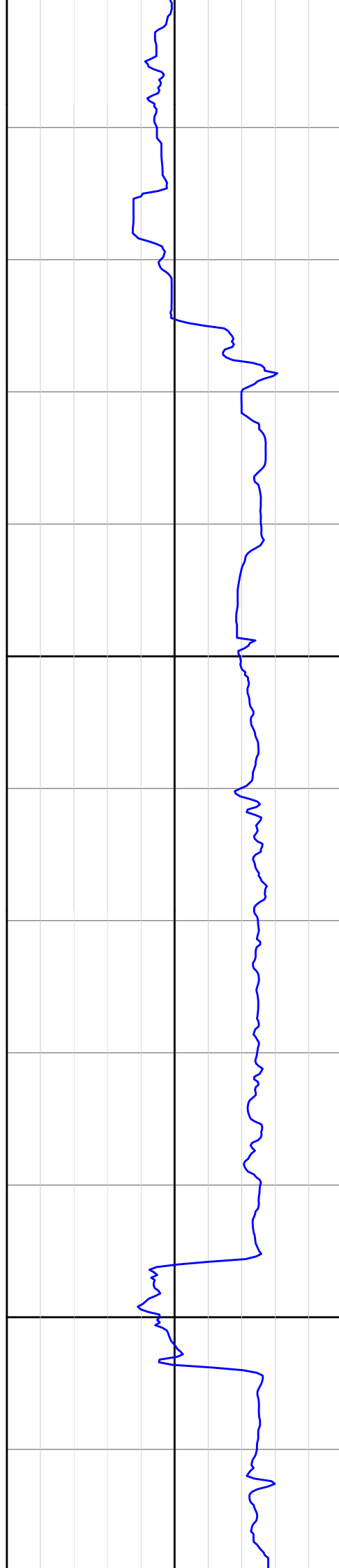
1425

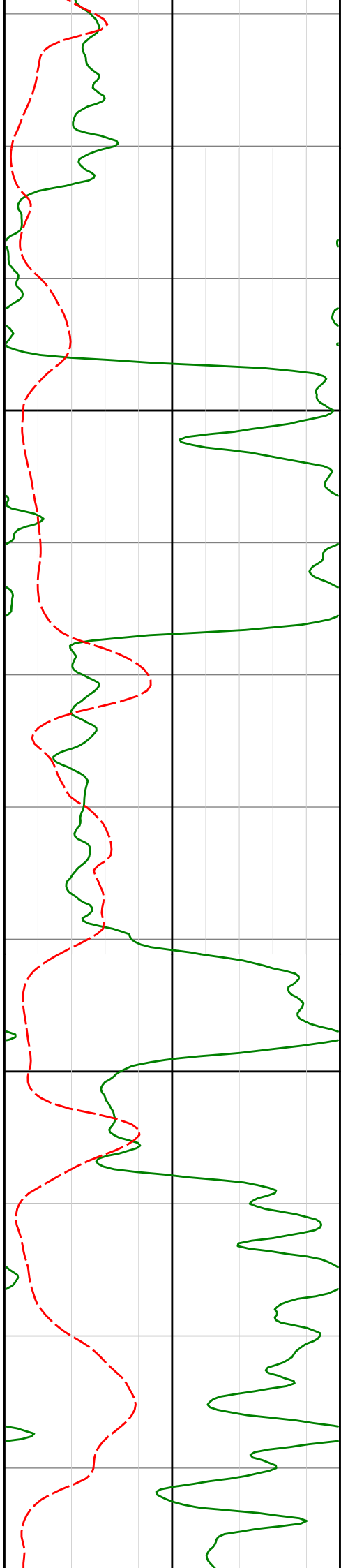




1450

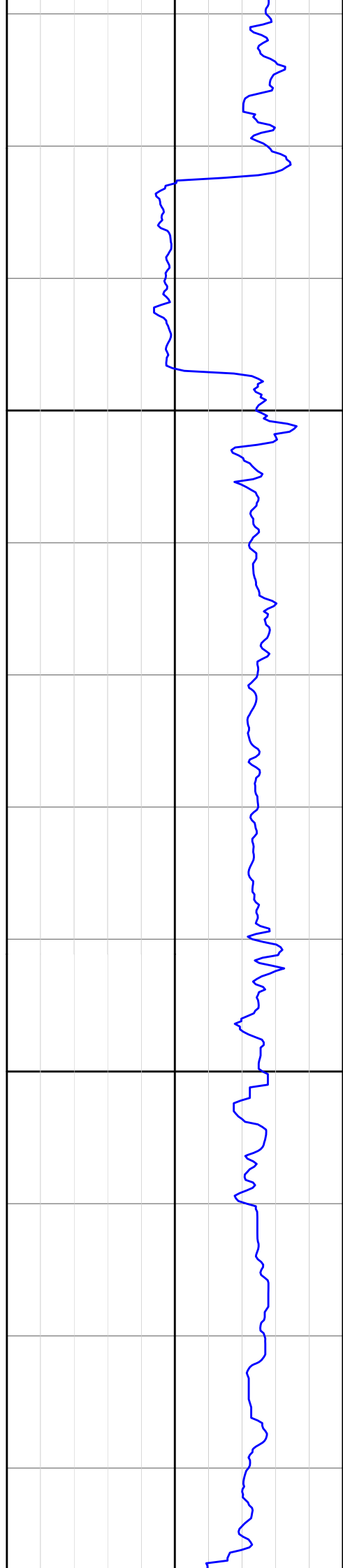
1475

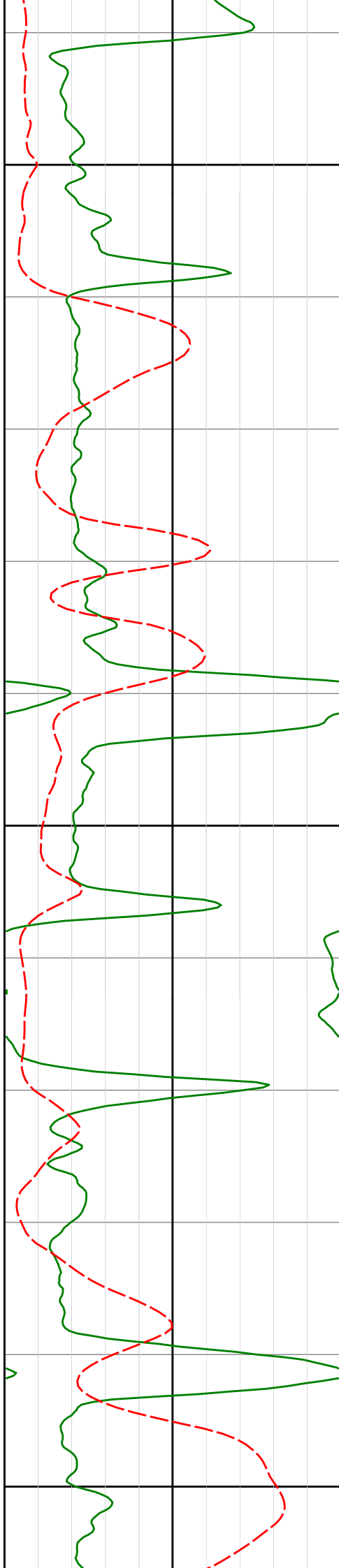




1500

1525

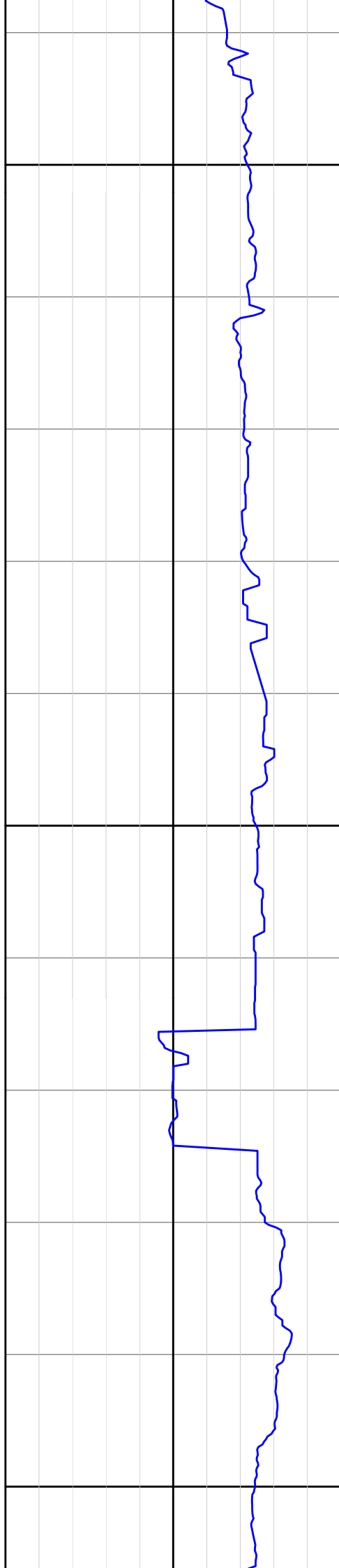




1550

1575

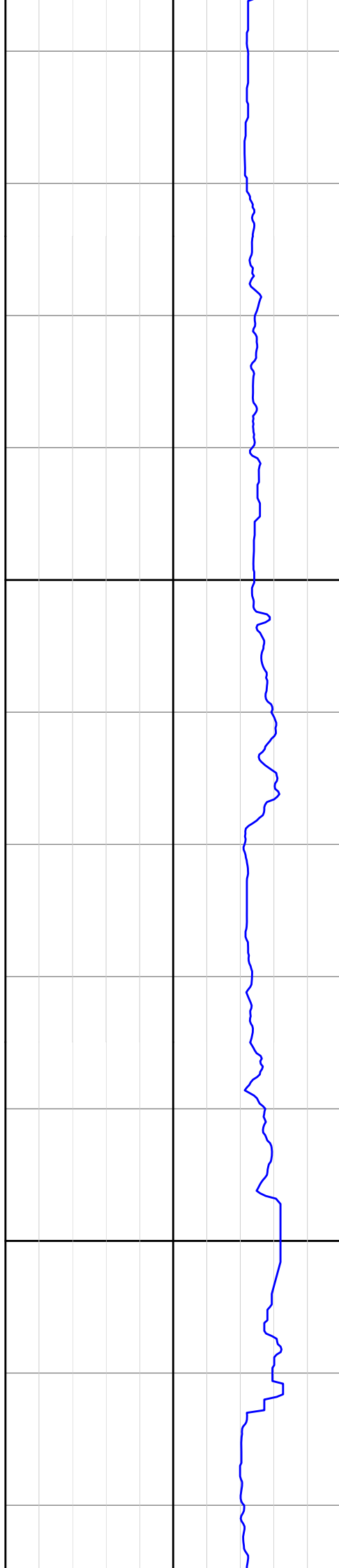
1600

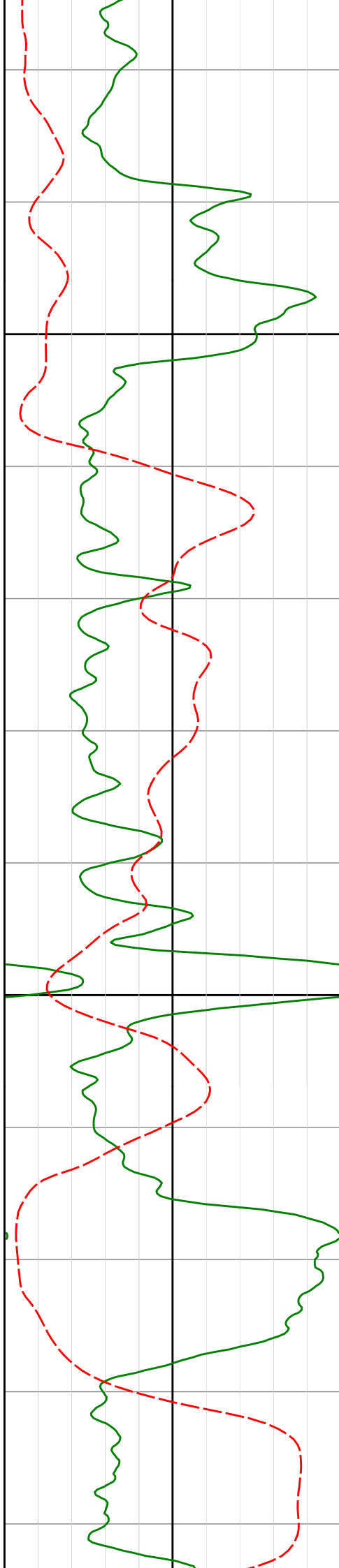




1625

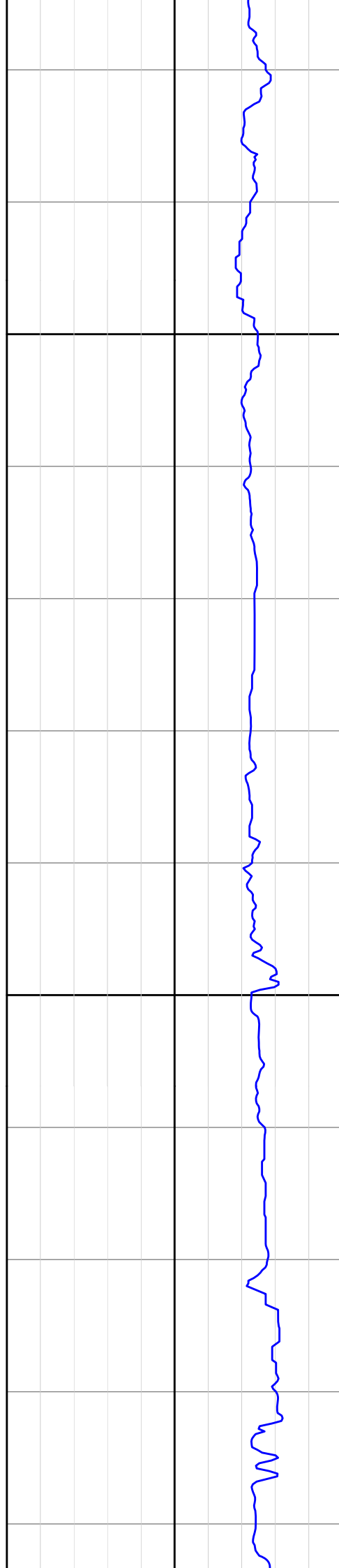
1650

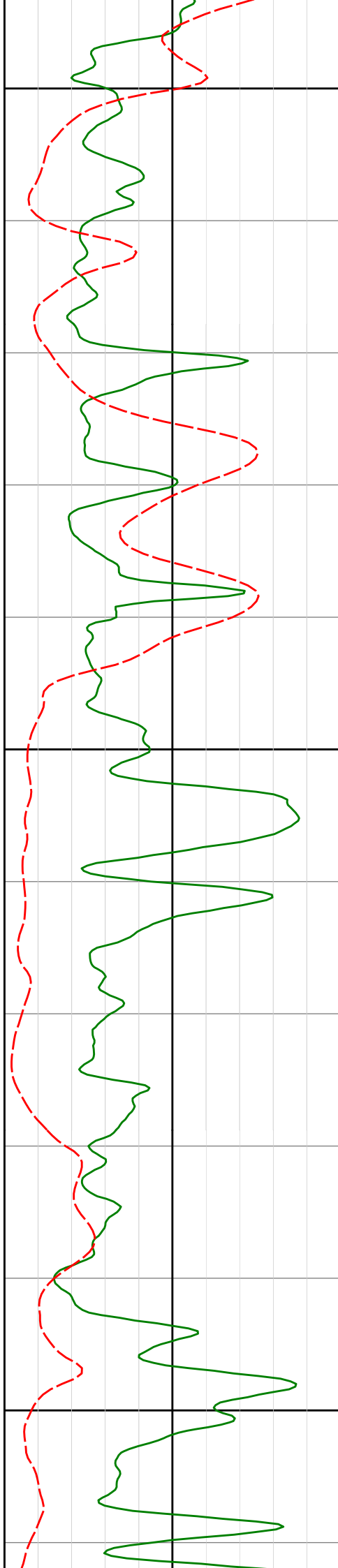




1675

1700

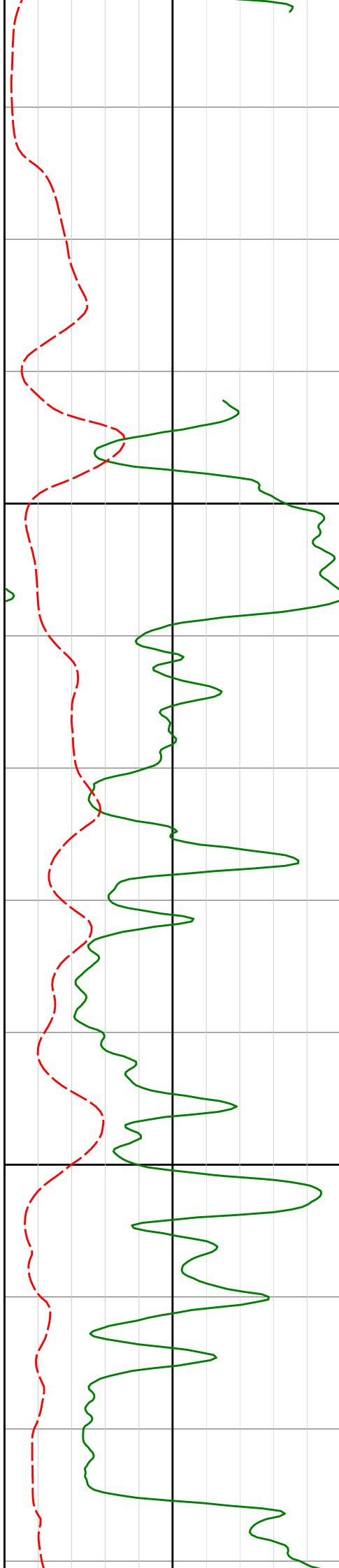




1725

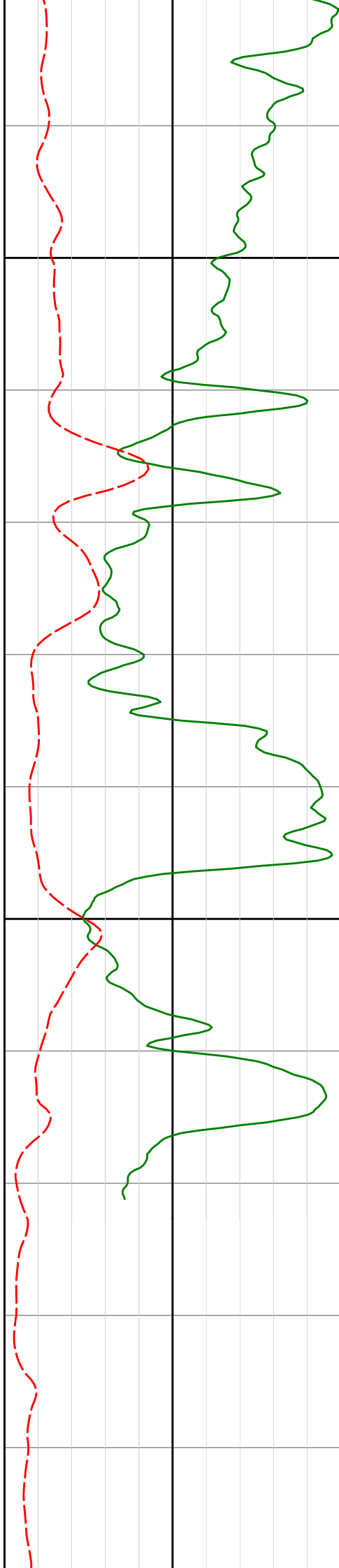
1750

1775



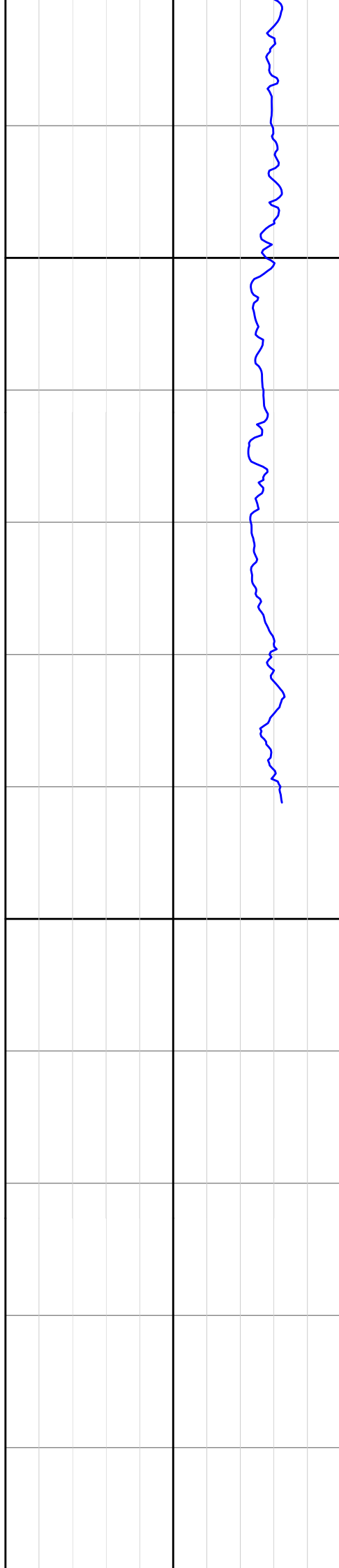
1800

1825



1850

1875



	GAMMA (Anadrill) 0 200 api	Depth MD 1 : 200	Compressional Slowness (DTCP) 240 40 usec/ft	
	ROP (Anadrill) 0 200 m/hr			