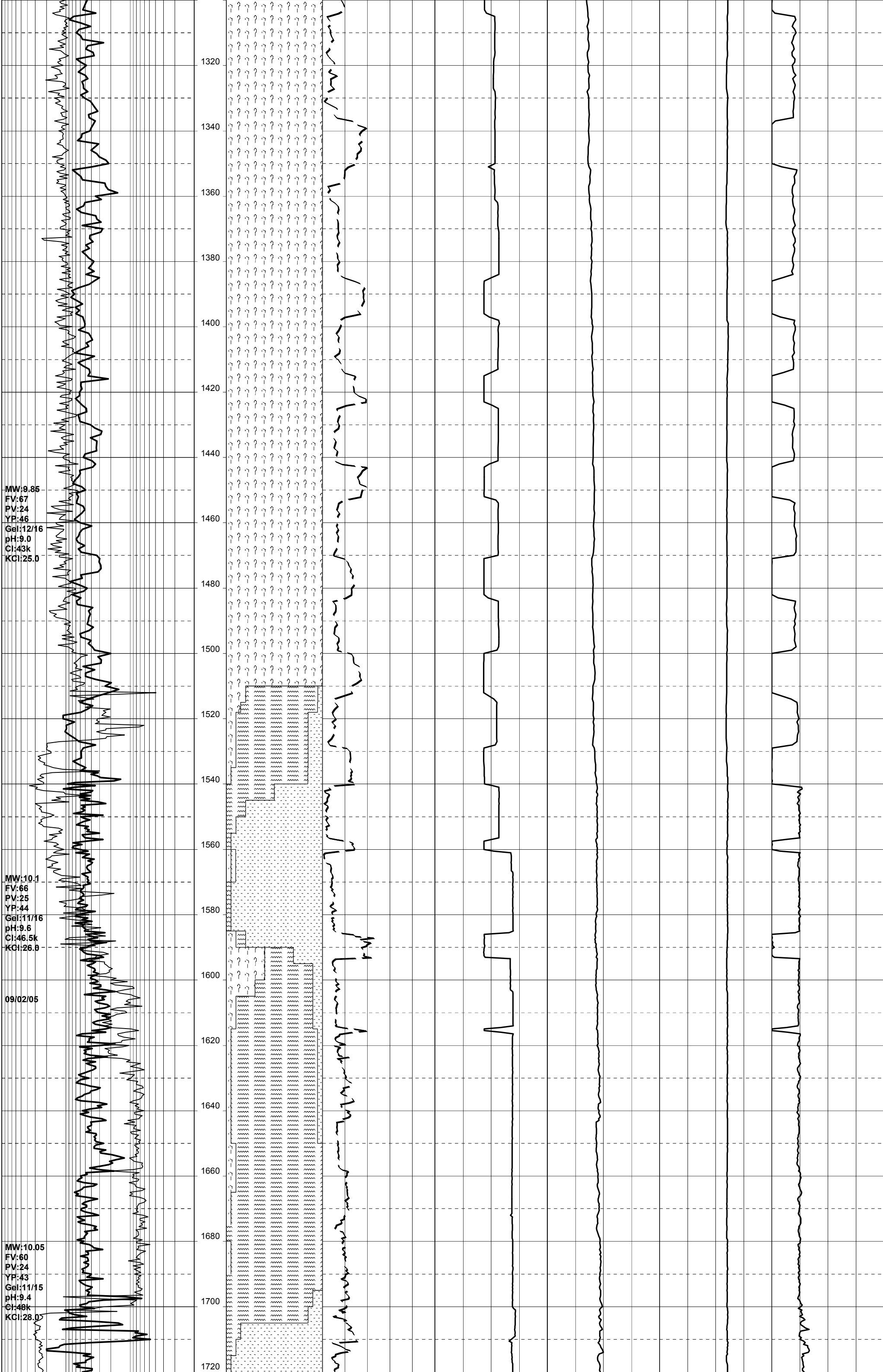
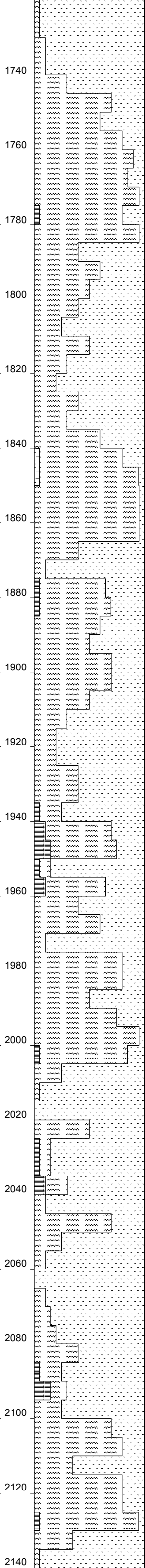
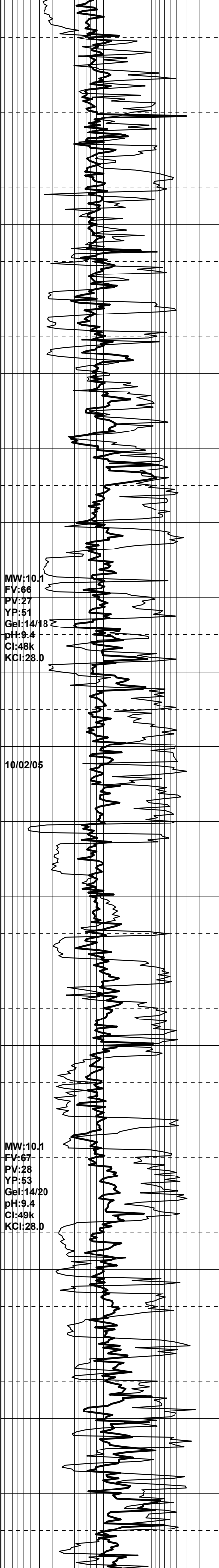


Well Name : TNA A3A		
Company : ESSO AUSTRALIA		Country : AUSTRALIA
RT-MSL : 31.32 m		Final TD : 2262.0 m
RT-SEABED : 90.72 m		Final TVD : 2105.2 m

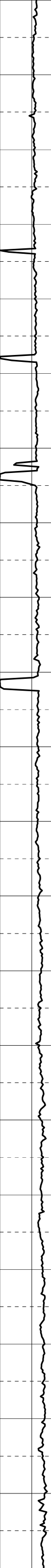
Generated by ALS Package

[illegible]





Handwritten notes in the right margin, likely describing the gel results or sample information. The text is written in cursive and is partially obscured by the grid lines.



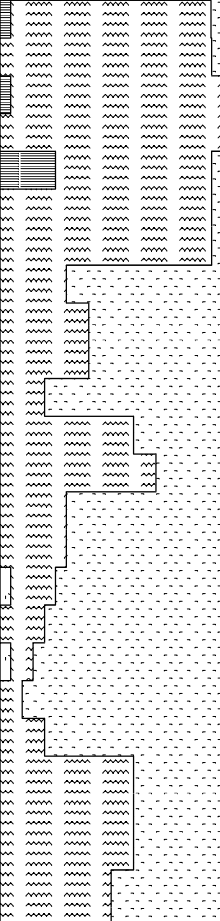
MW:10.05  
FV:72  
PV:29  
YP:57  
Gel:15/24  
pH:9.2  
CI:49.5k  
KCI:28.0

11/02/05

MW:10.1  
FV:70  
PV:30  
YP:55  
Gel:14/20  
pH:9.5  
CI:49k  
KCI:28.0

7" Production Casing at 2261 m  
Liner Lap at 1097 m

2160  
2180  
2200  
2220  
2240  
2260



Tuna A3A Total Depth at  
2262 mMDRT 2105.2 mTVDRT  
03:15 hours on 11/02/2005

2280